



No.	FROM	TO	Pressure	Temp				
ONE	4460'	4212'	0 PSI	20	REPEAT			
TWO	7812'	3919'	0 PSI	20	MAIN			
	GAMMA		SIGMA		AMPLITUDE			
Pass	Scale		Scale		Scale		Scale	
No.	L	R	L	R	L	R	L	L
ONE	0	200	60	0	0	100		
TWO	0	200	60	0	0	100		
DIRECTIONAL INFORMATION								
Maximum Deviation			deg. @		KOP			

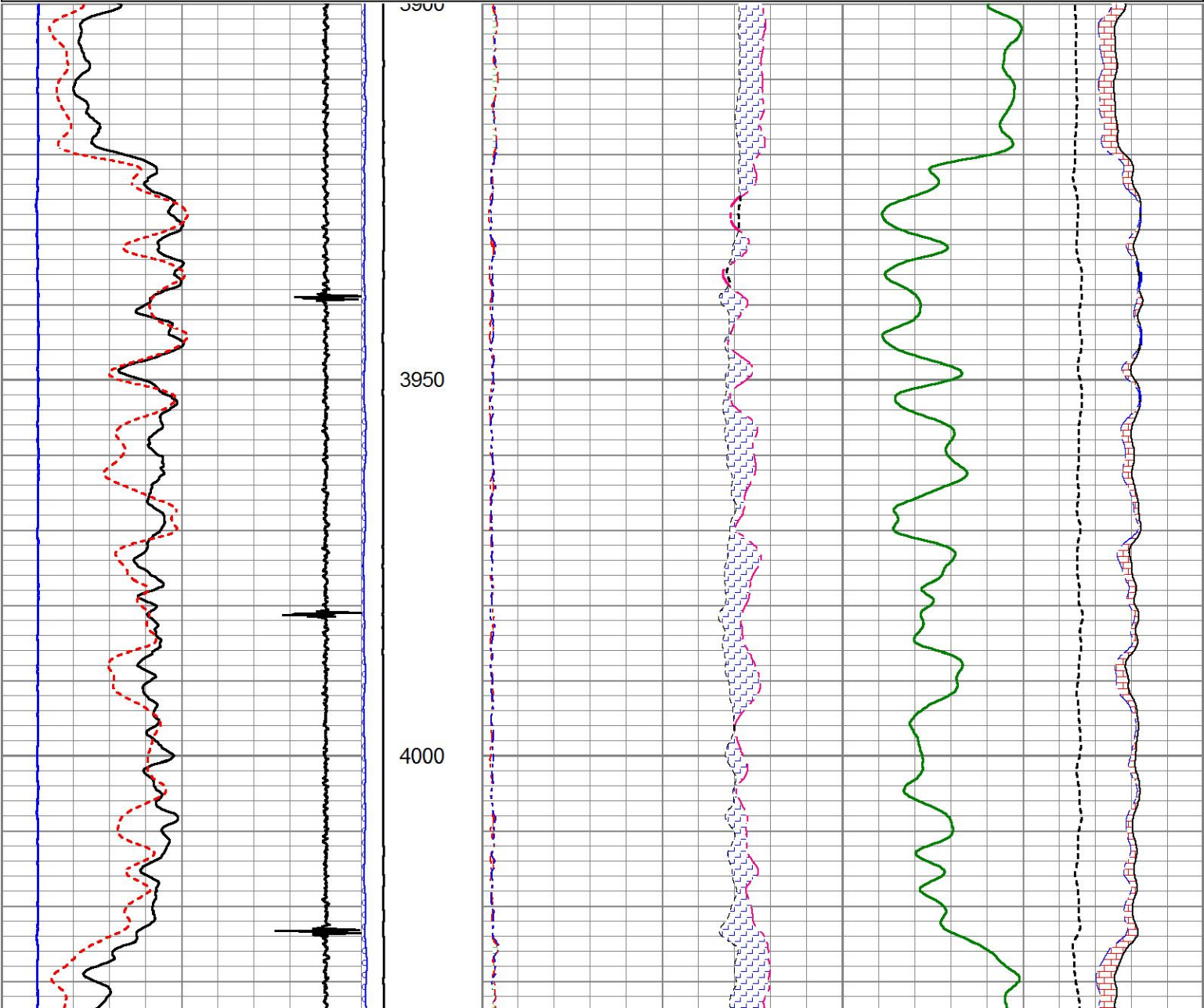
HALLIBURTON

MAIN PASS

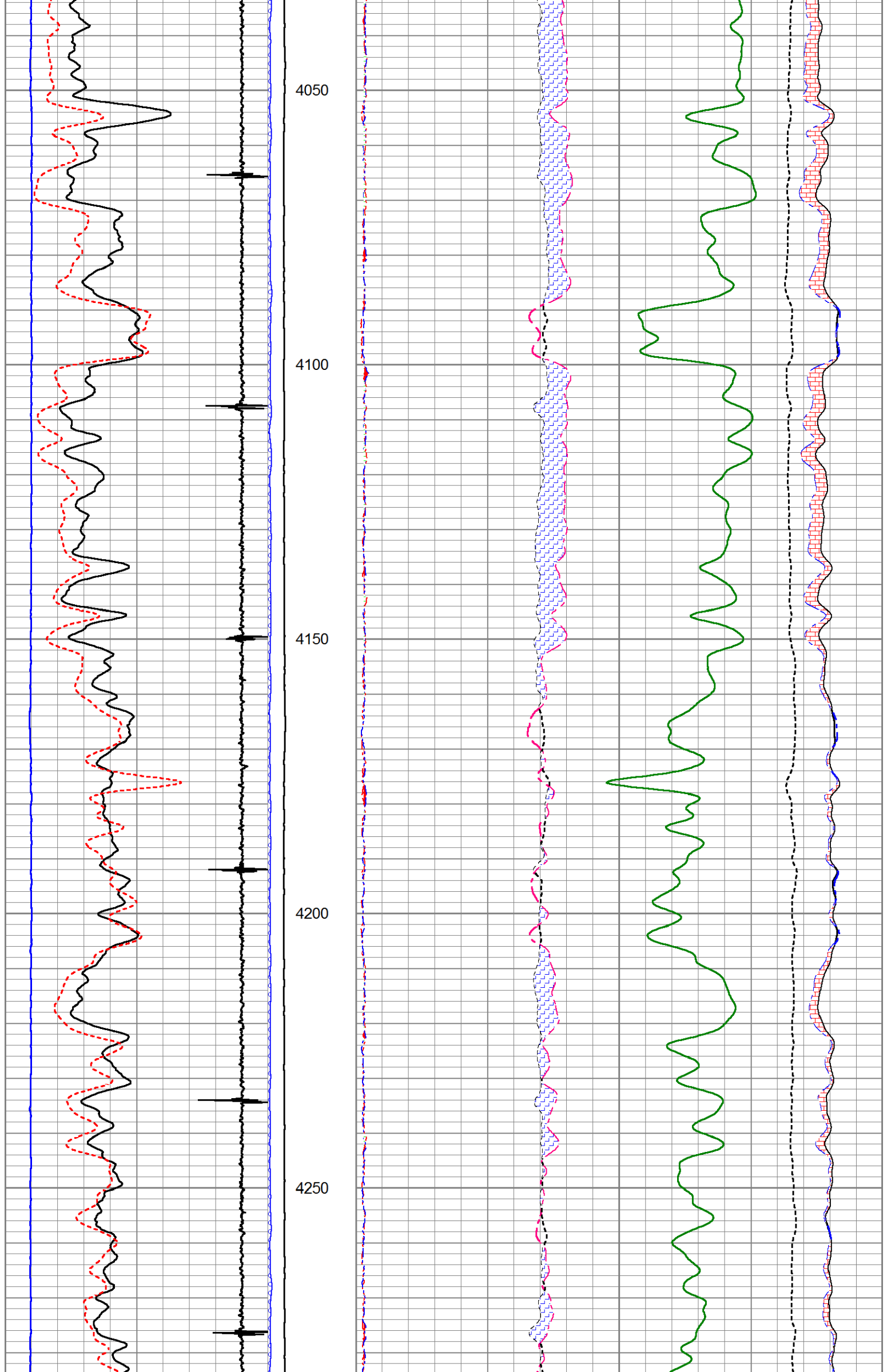
5" = 100'

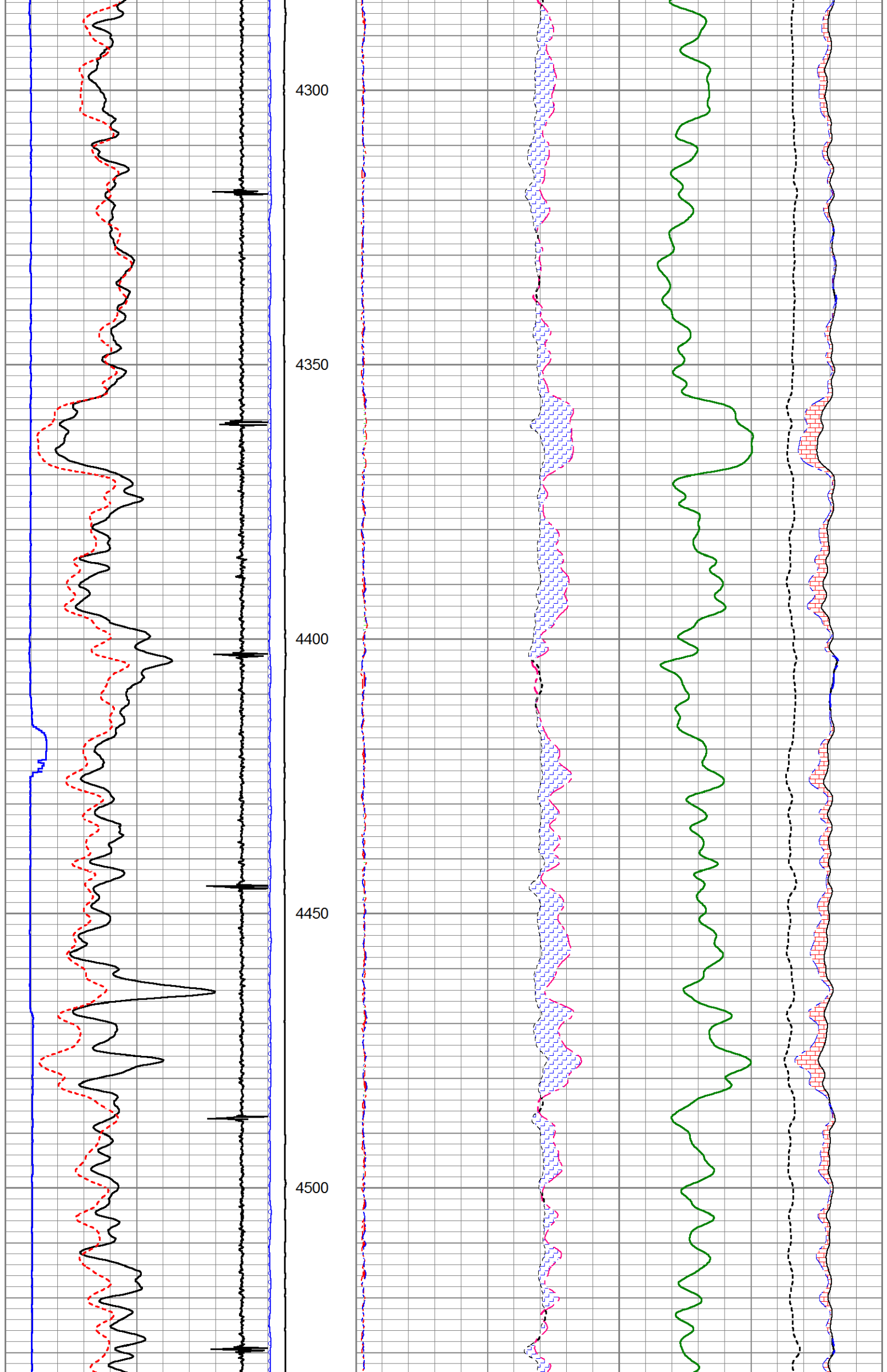
Database File	c:\users\h180706\desktop\ursa\32a\32a_17_7_95.db
Dataset Pathname	MAIN
Presentation Format	!1!!rmt_rmti
Dataset Creation	Fri Dec 02 10:29:26 2016
Charted by	Depth in Feet scaled 1:240

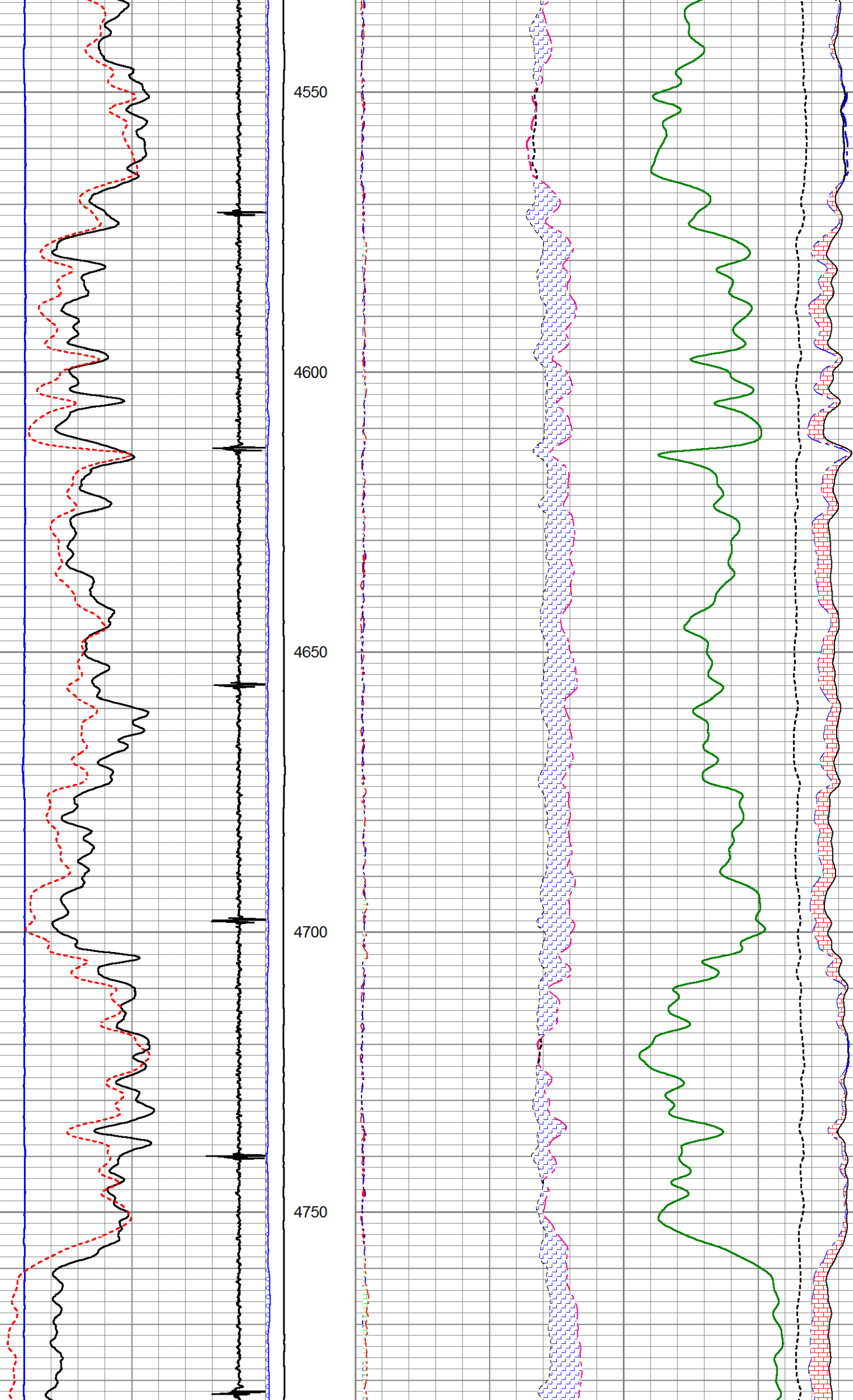
0	GR	200	LTEN	60	SGFF					0
2700	CCL	-300		0	(lb5000	2	RNF (Ratio Near/Far)	0.5	100000	FSIN
0	LSPD (ft/min)	200	0	OAI1100	1.65	RIN (Ratio Near/Far Incl)	0.65	60000	NCAP	0
10	SGINear	40			0	NFTR (Near Fit Error)	100	60000	FCAP	0
					0	FFTR (Far Fit Error)	100			

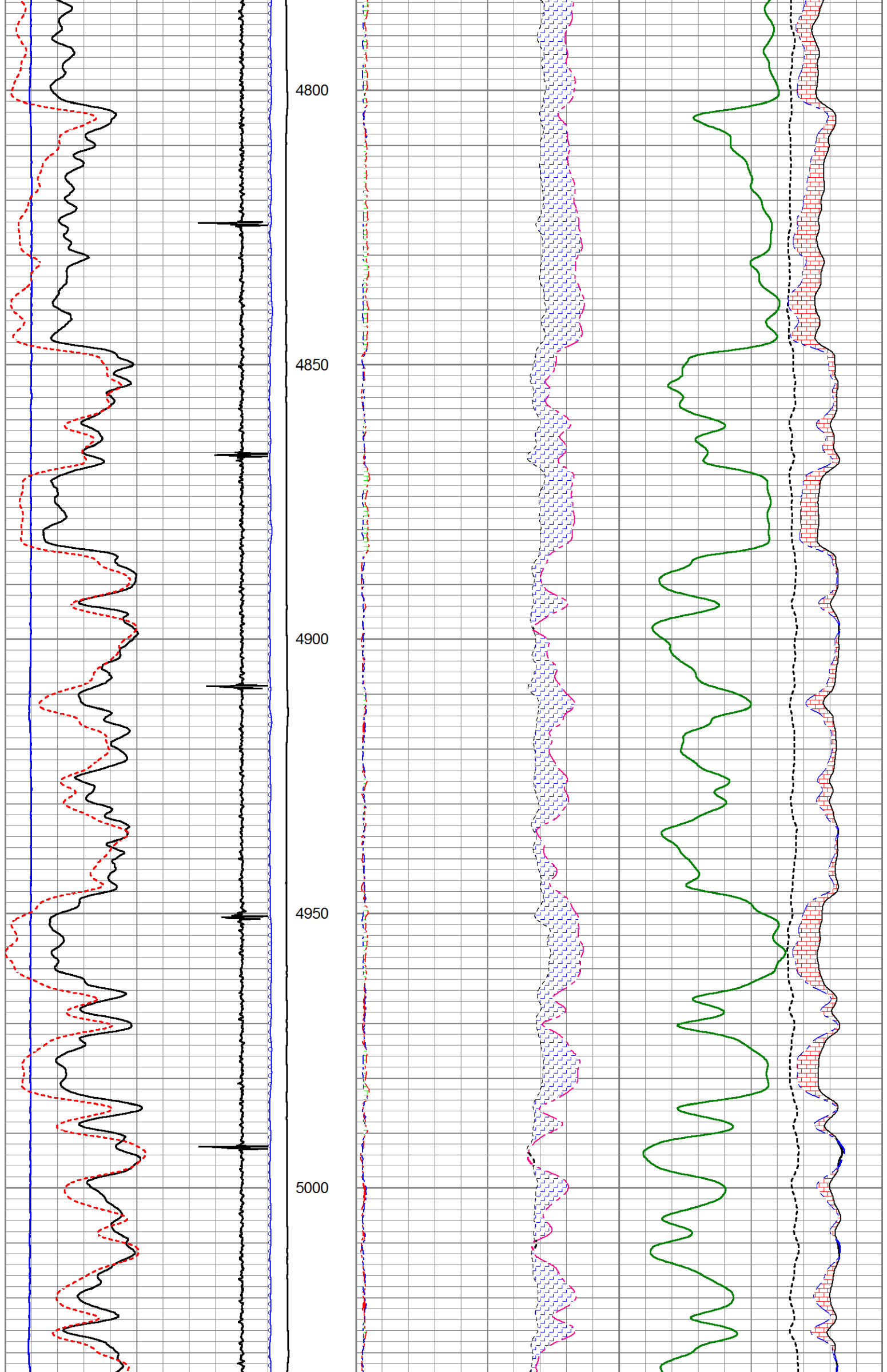


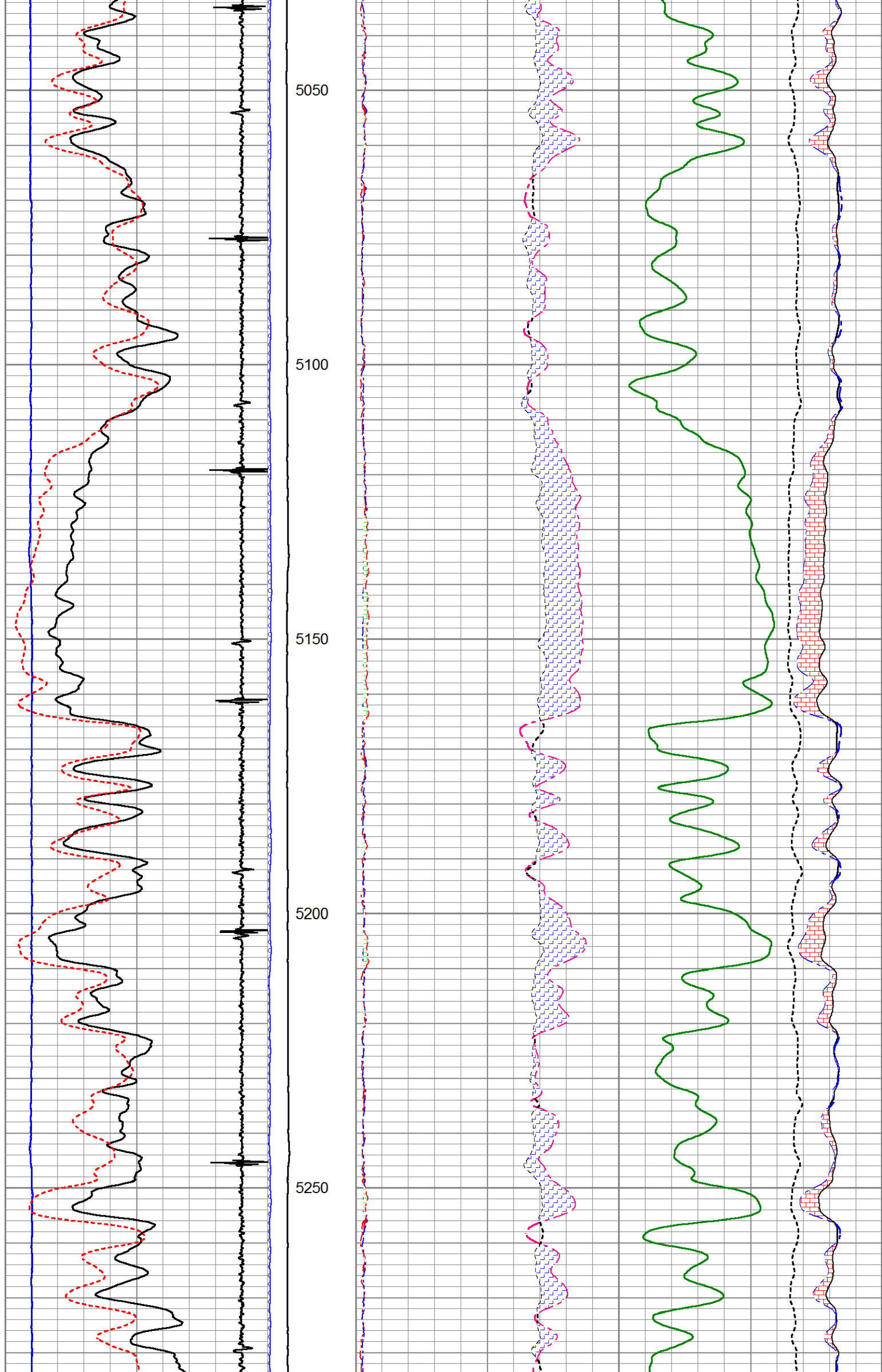


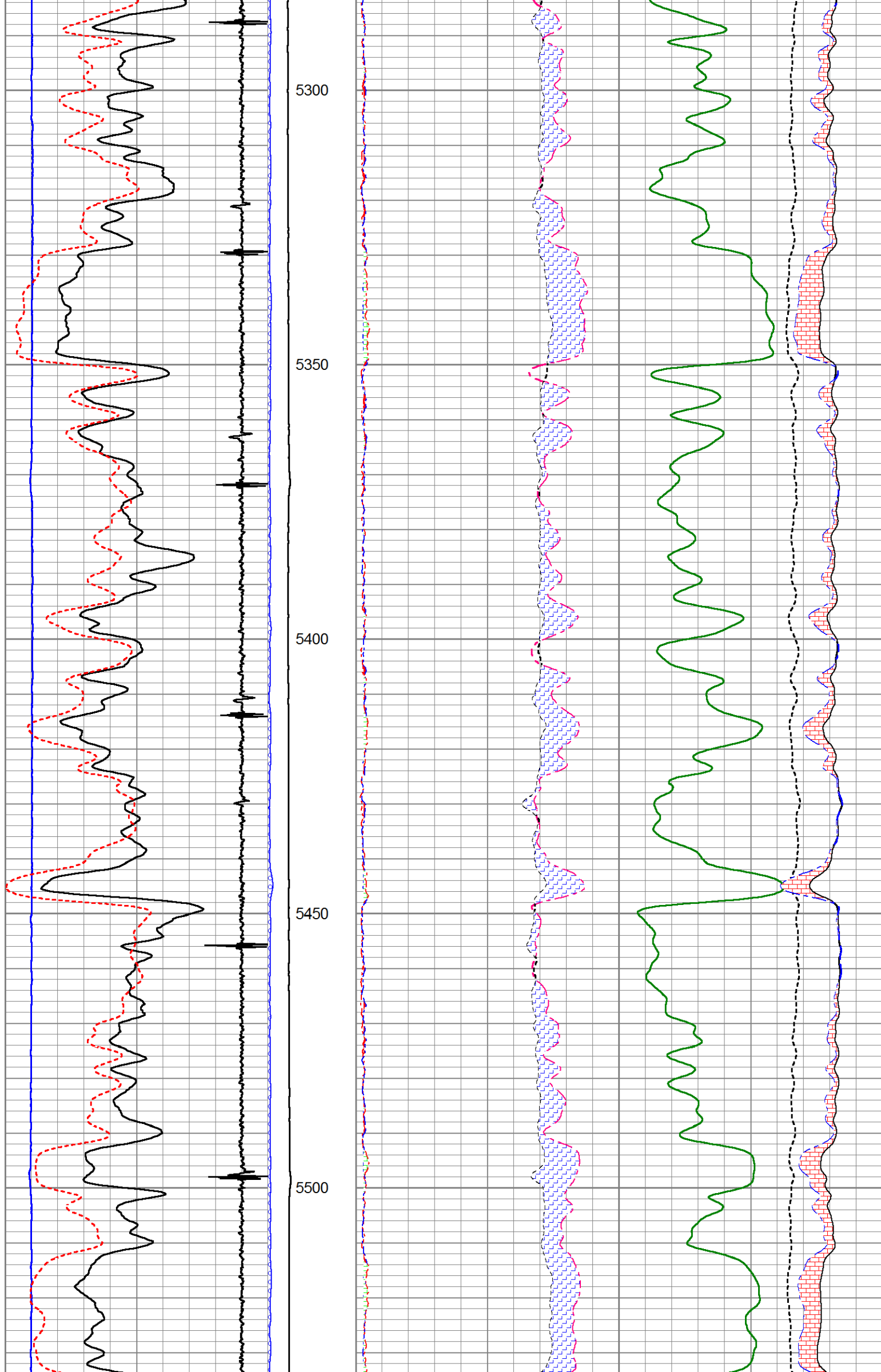




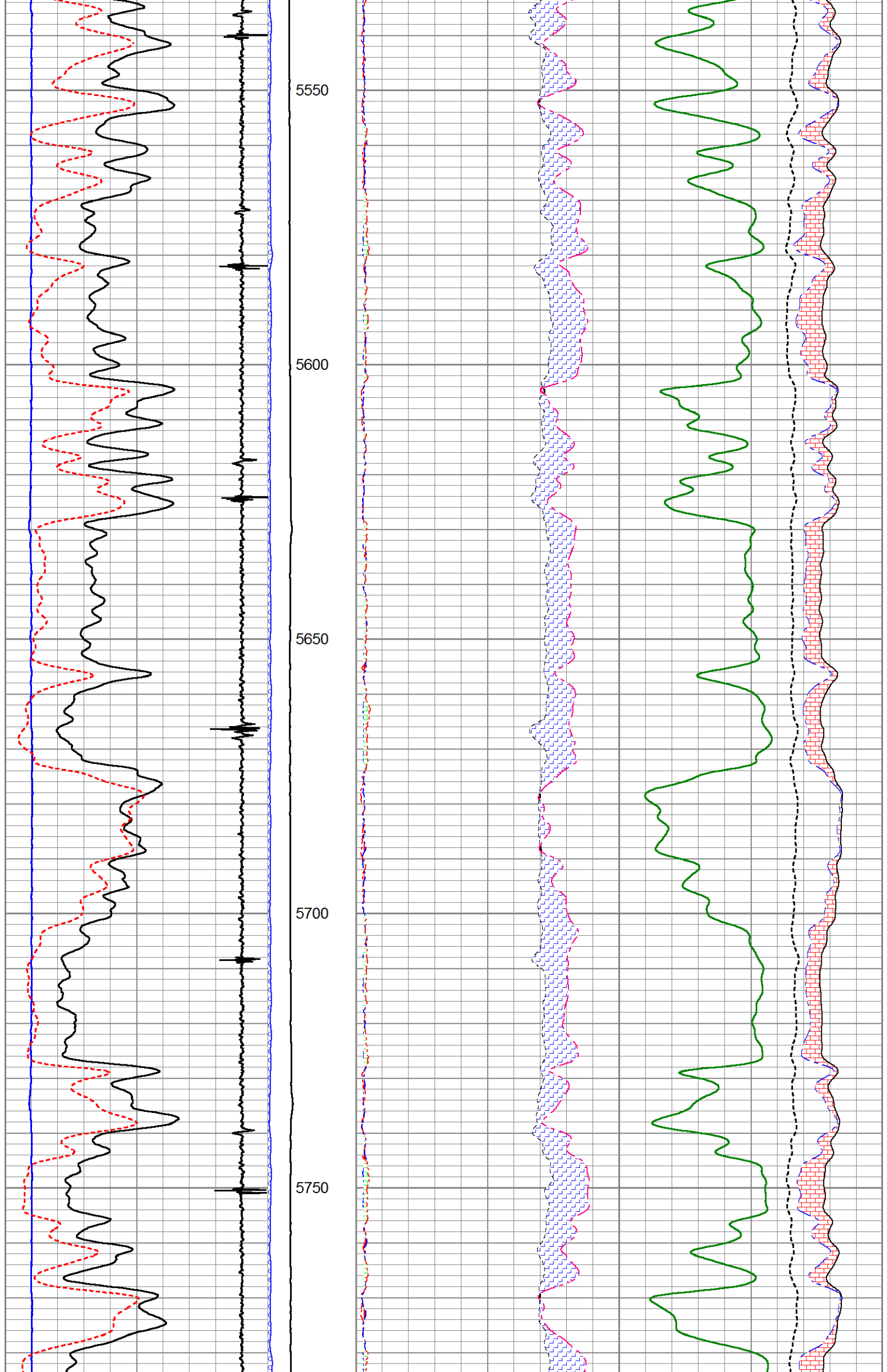


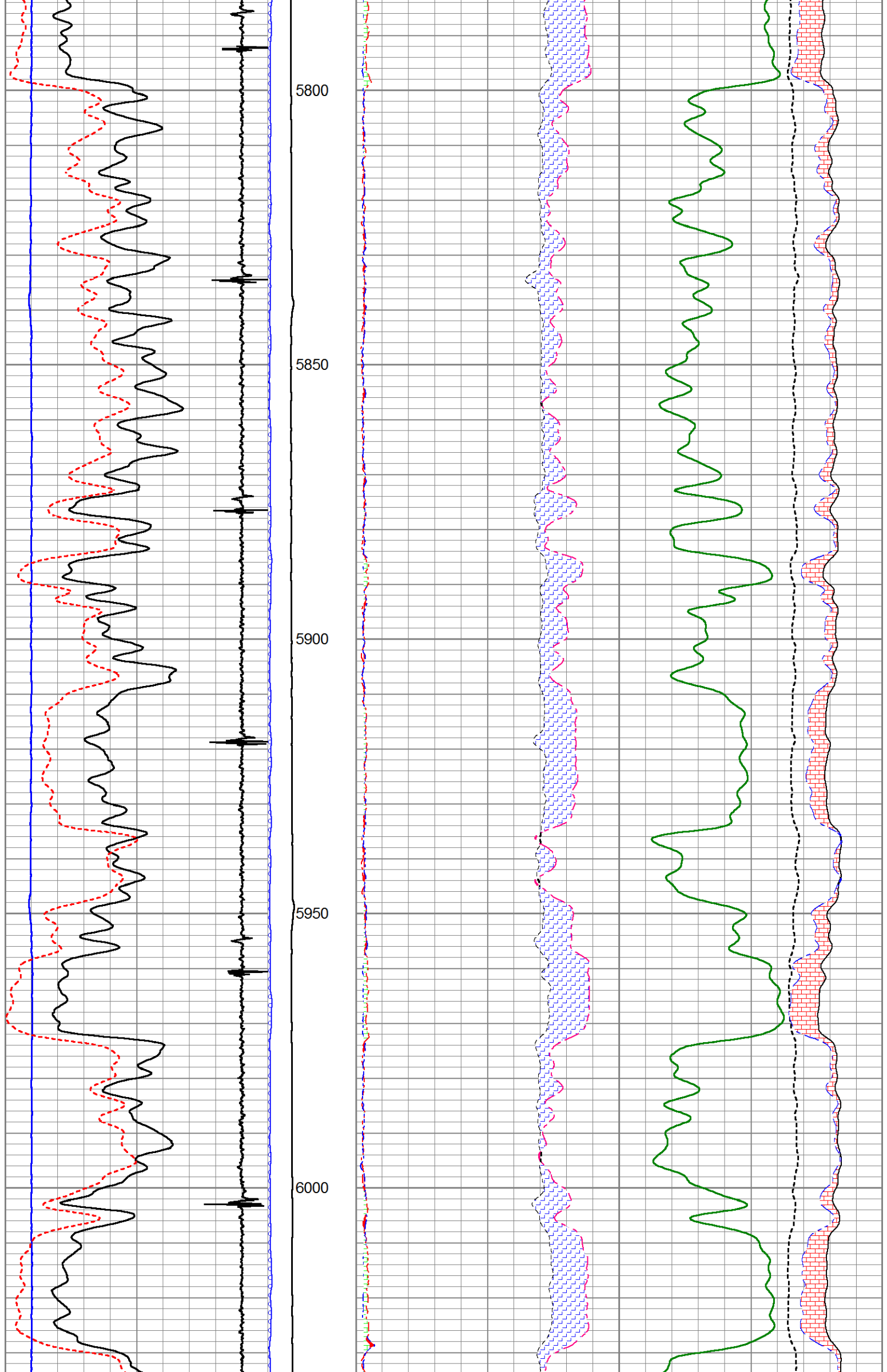


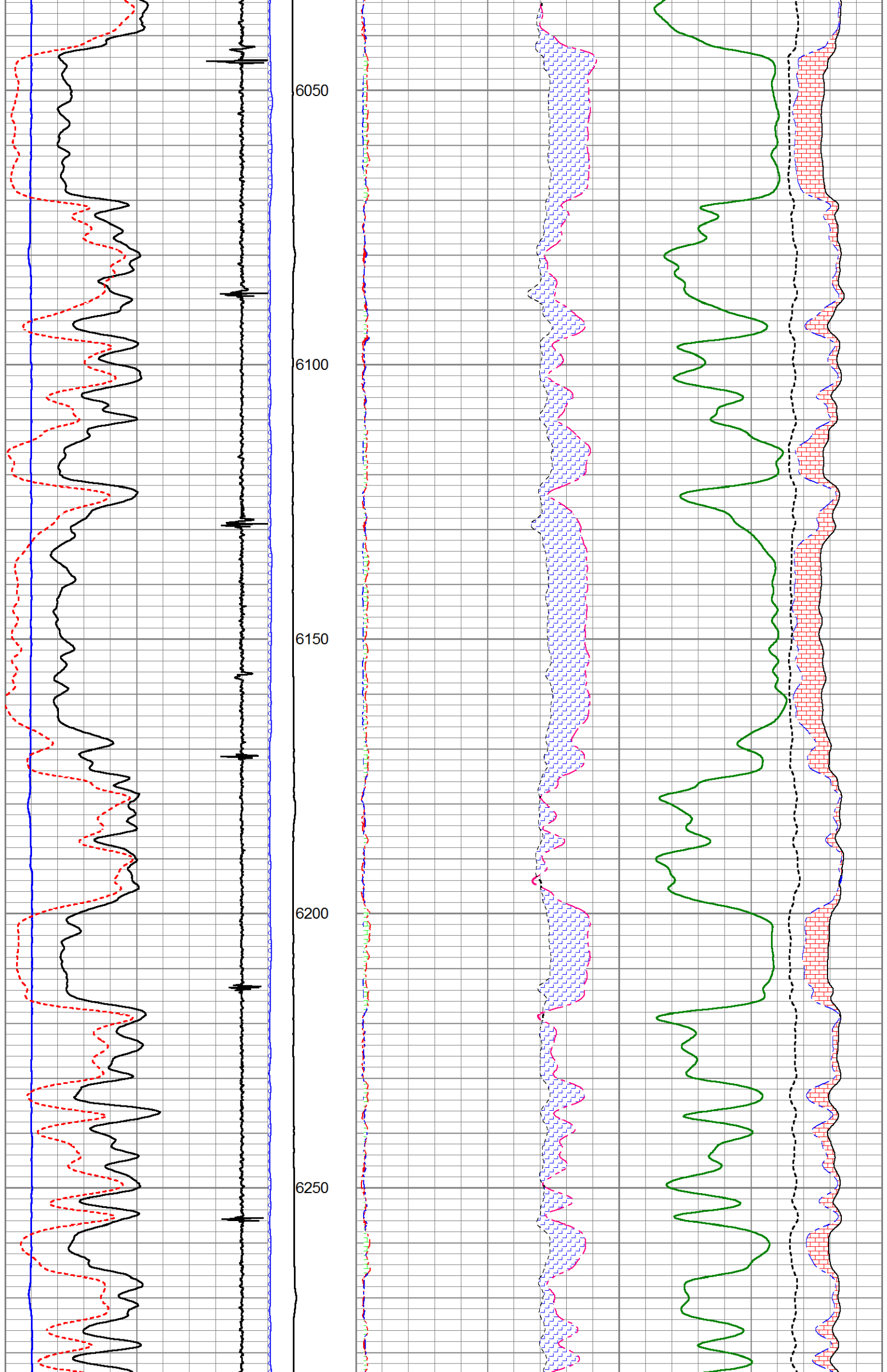


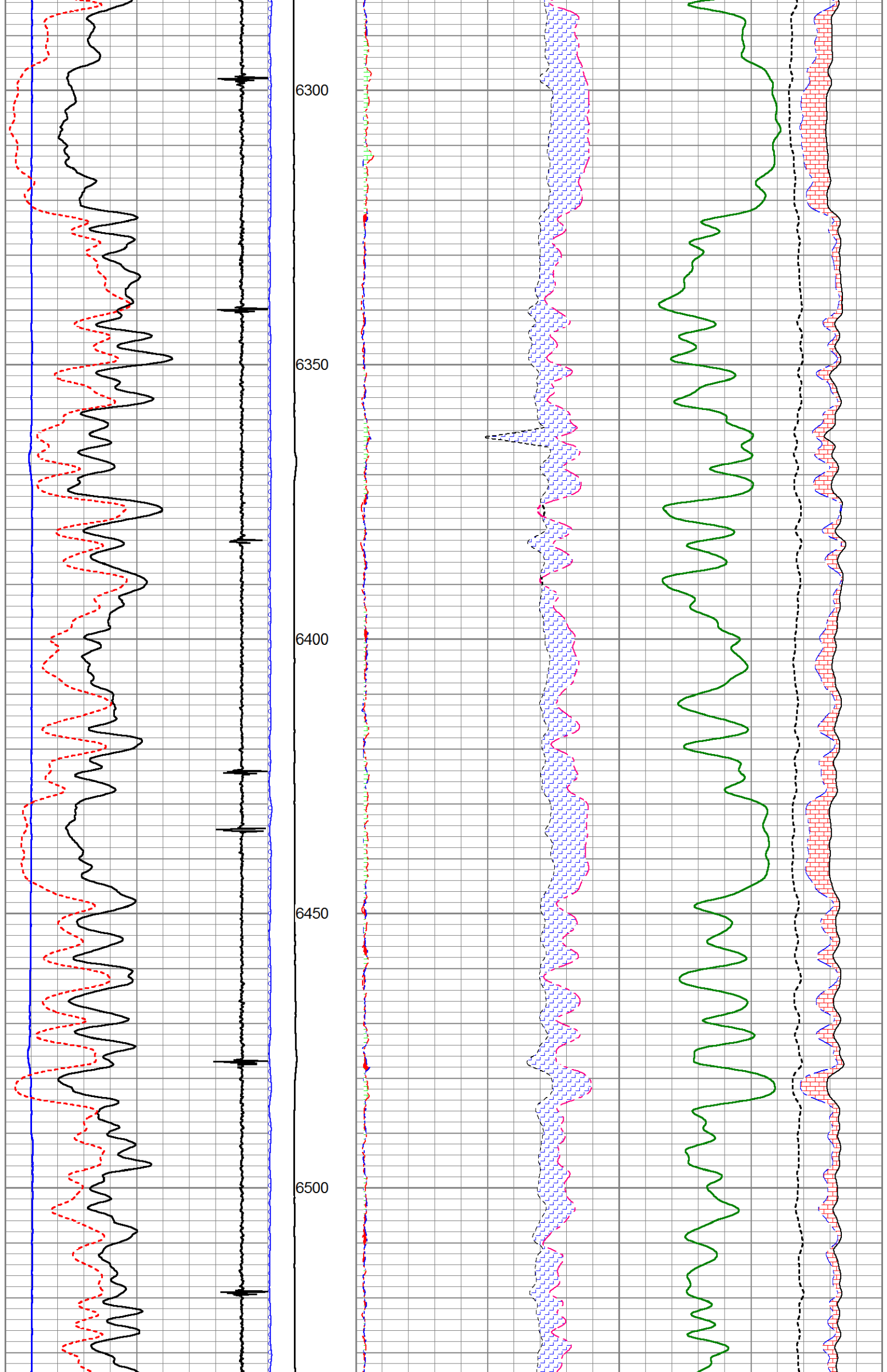




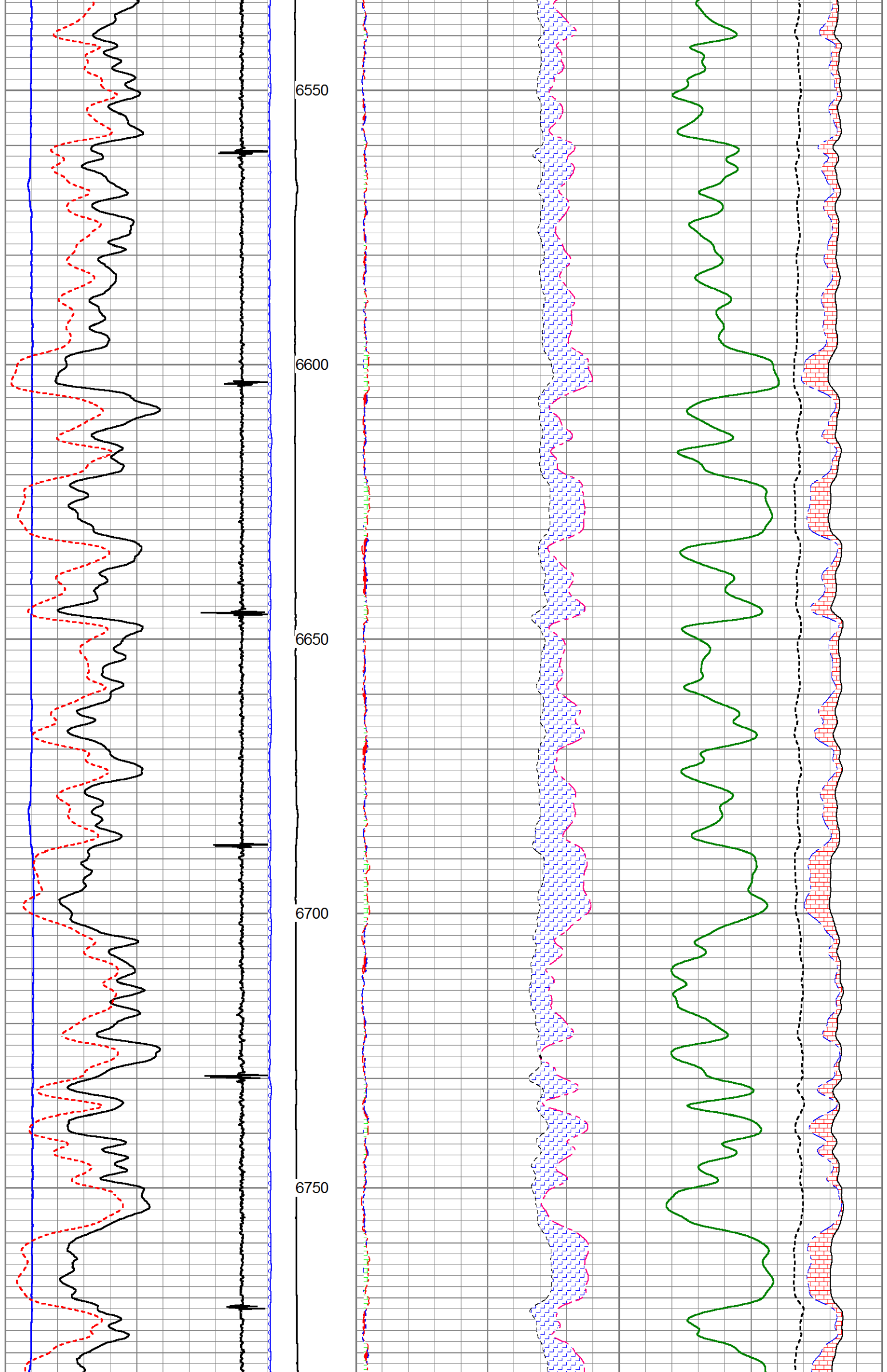


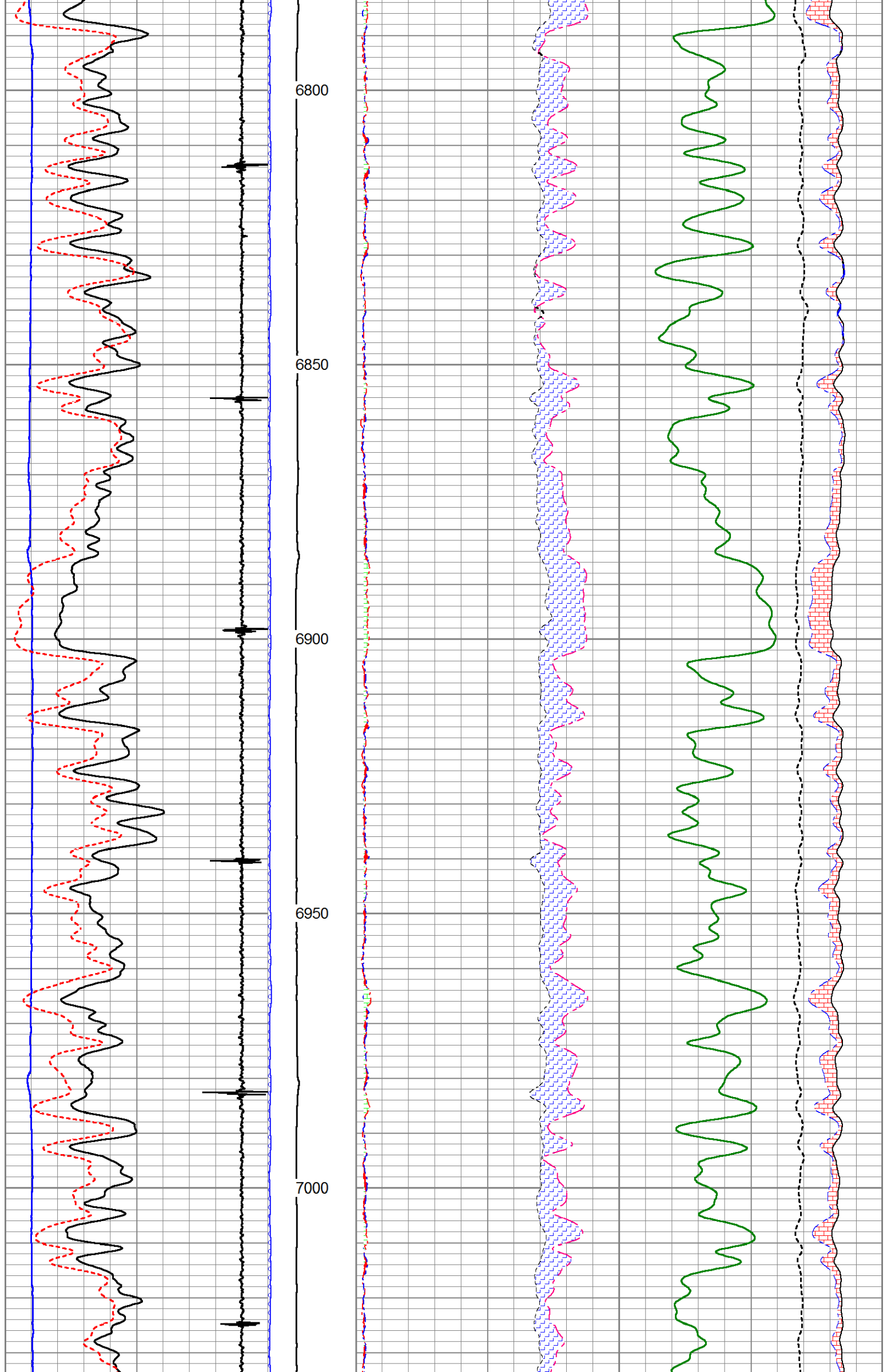


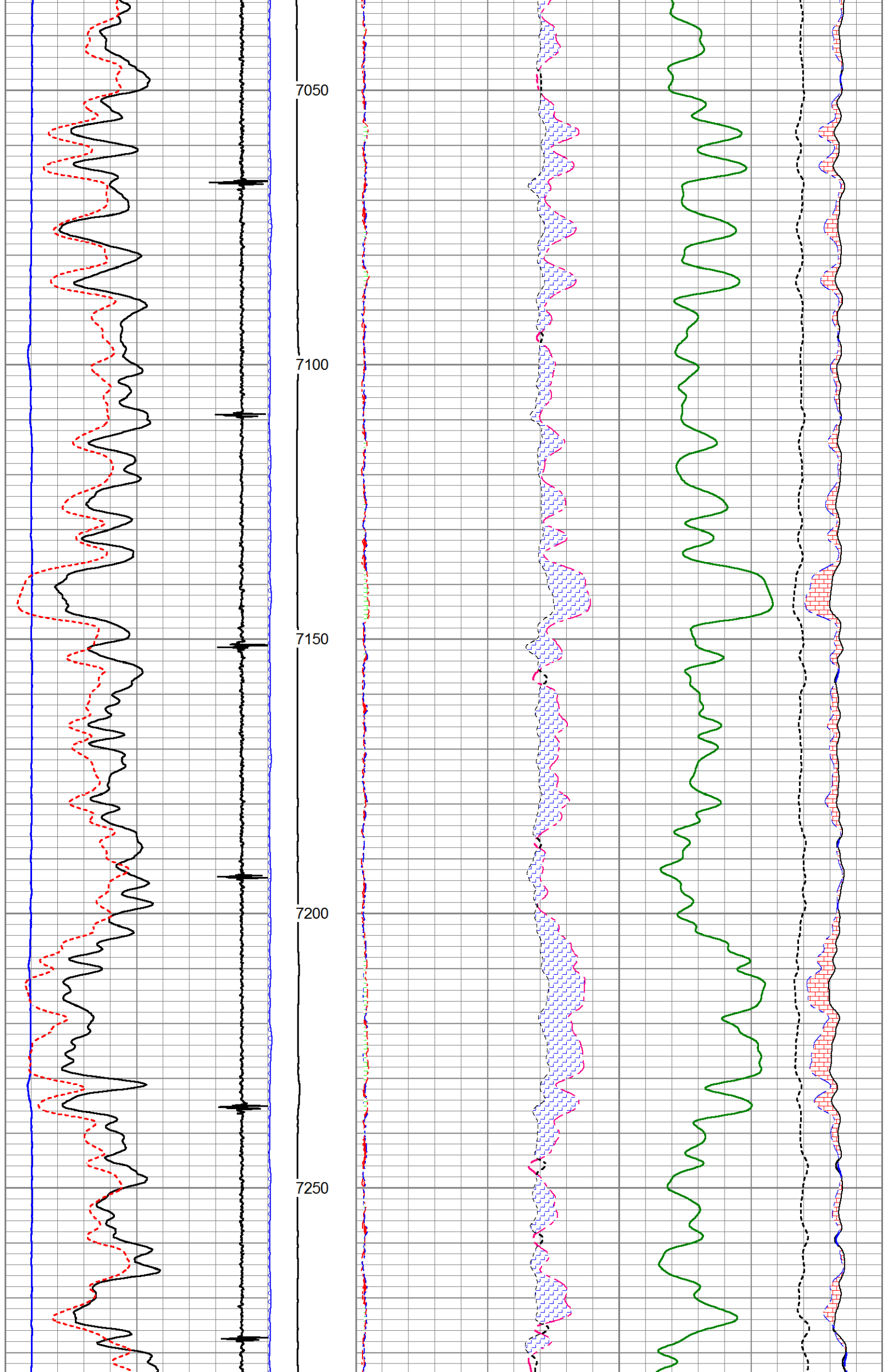


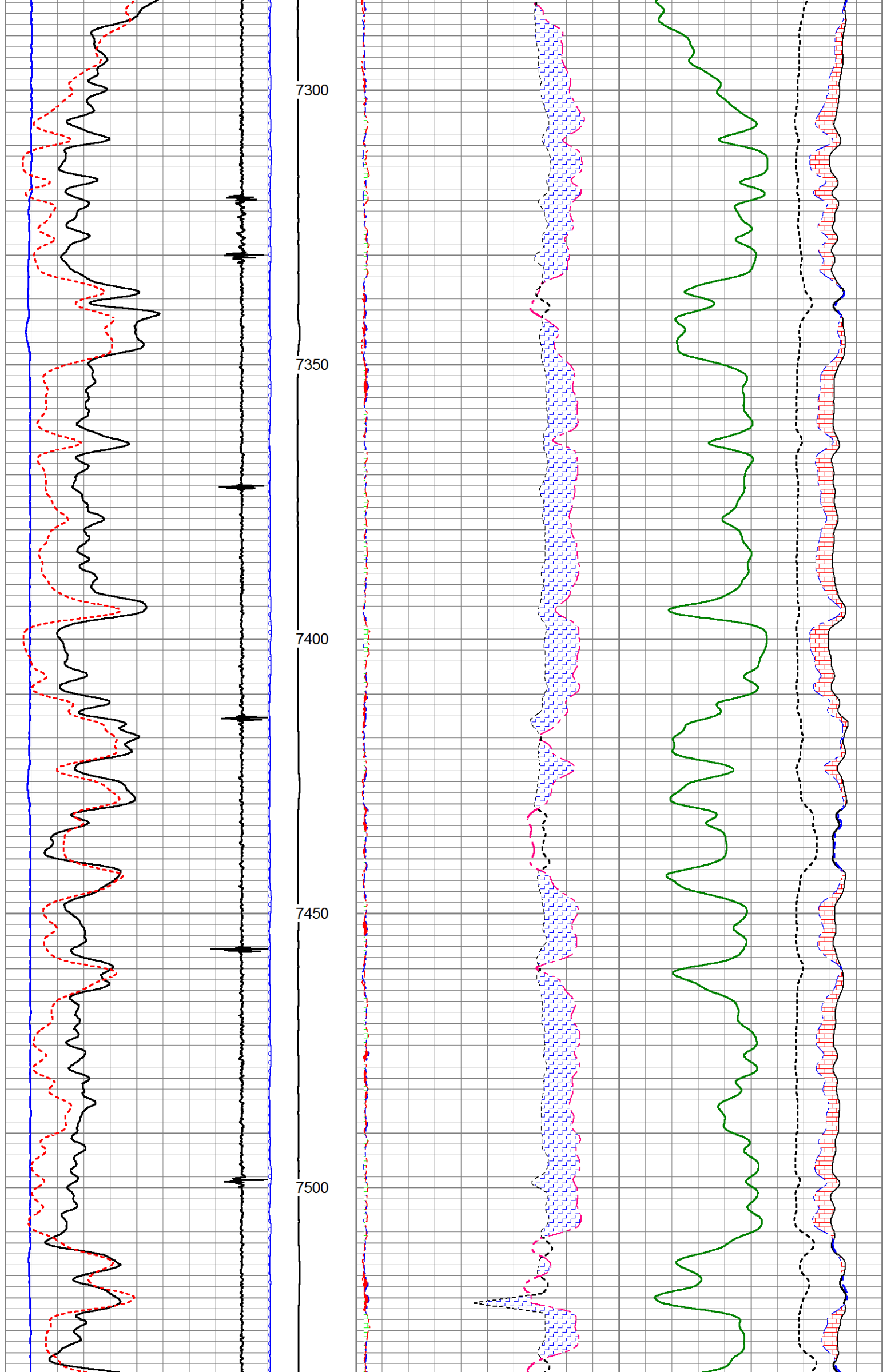




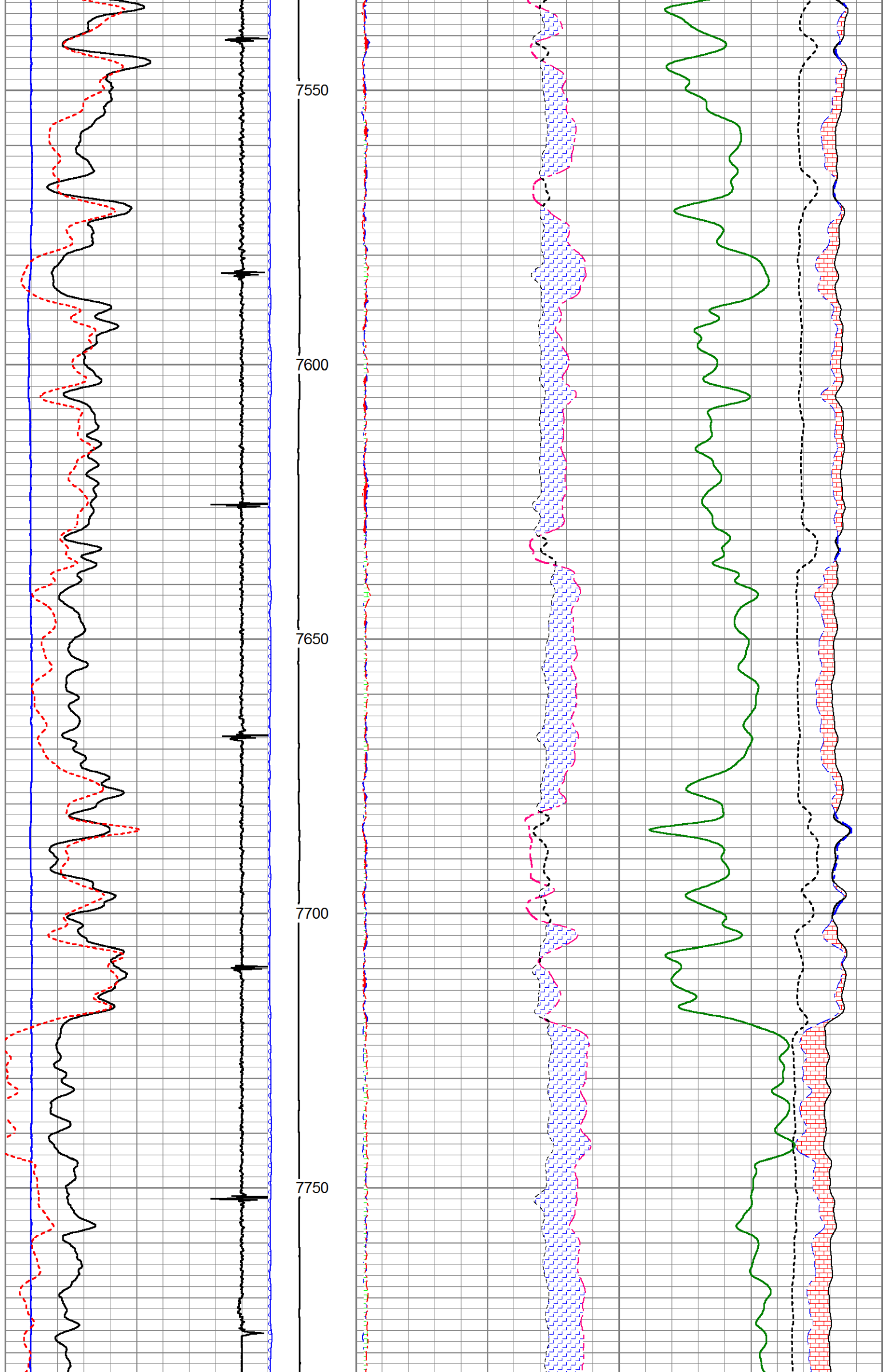


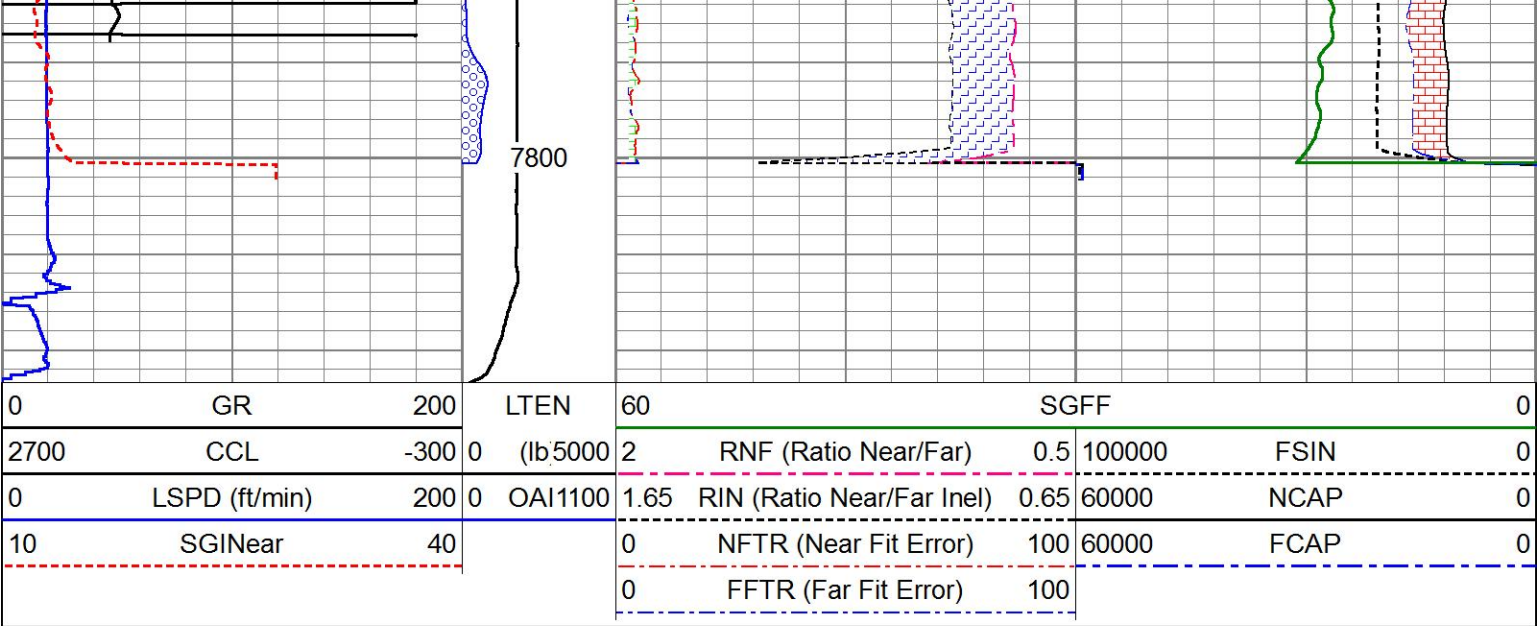








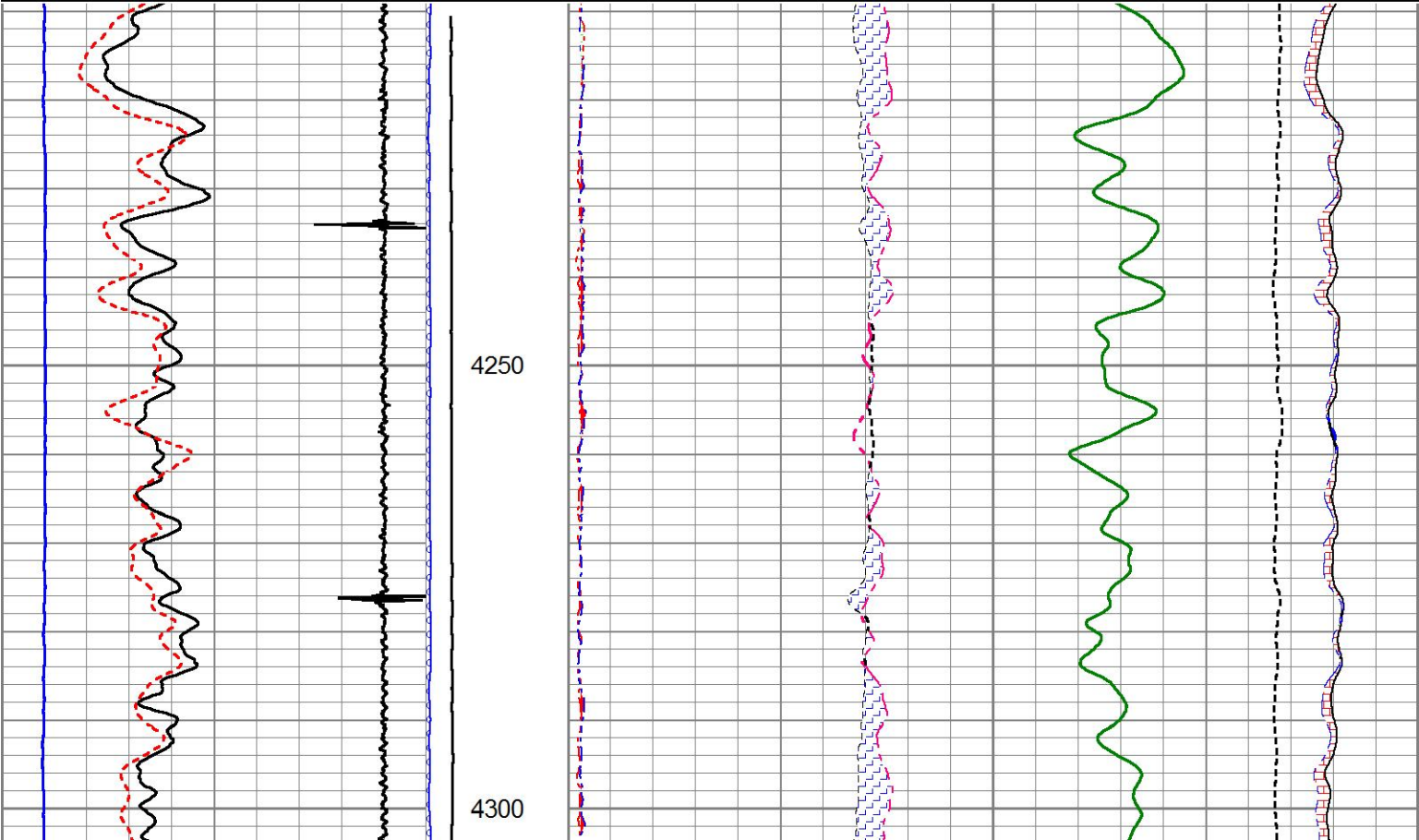
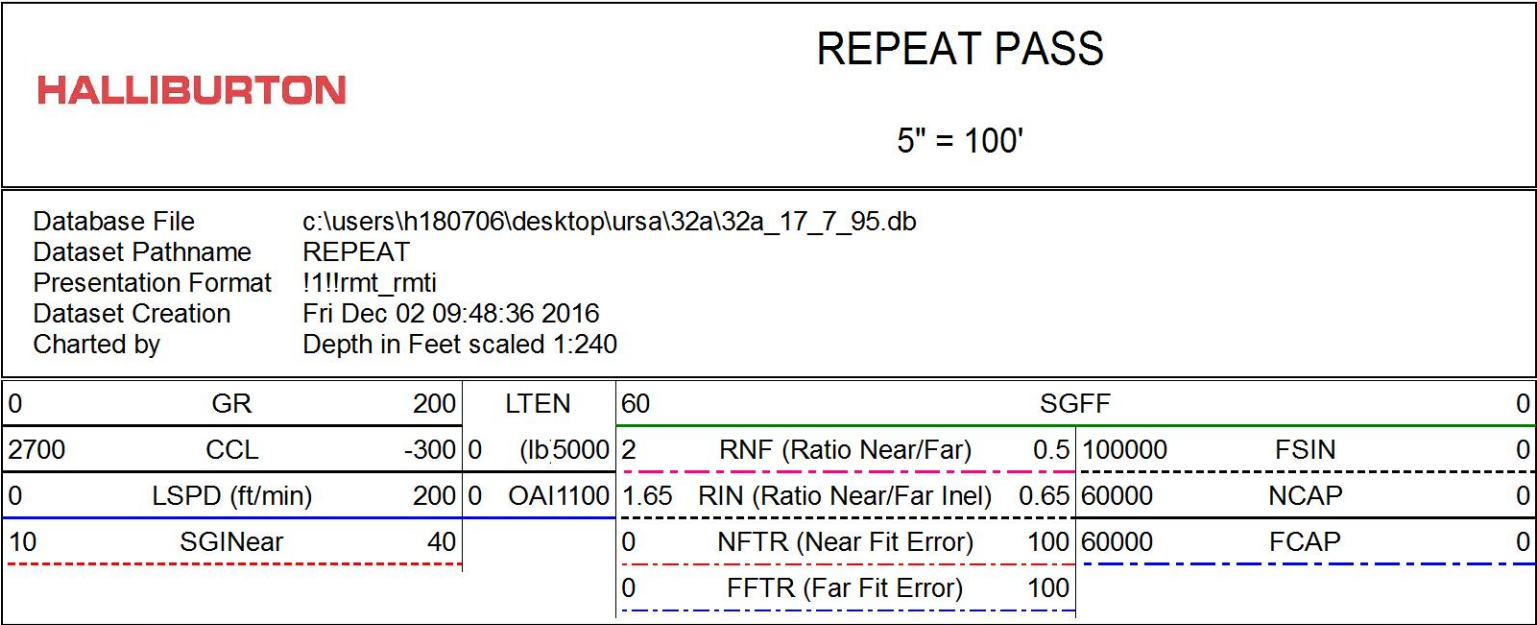




MAIN PASS

HALLIBURTON

5" = 100'





Top - Bottom

BHSAL1 1	BHSAL2 0	BHTEMP_Src TEMP	BITSIZE in 7.875	BORSAL kppm 150	BOTTEMP degF 220	CASED? Yes	CASEOD in 4.5
CASETHCK in 0.25	CASEWGHT lb/ft 11.6	LTH Sandstone	MSGGN 1	MudWgt lb/gal 8.4	PERFS 0	POROS1 1	POROS2 0
RHOCF 0.25	SO in 0	SRFTEMP degF 0	TDEPTH ft 7700	UHSGC NONE	USERFTT usec/ft 0	ZREF MRayl 1.7	

Calibration Report

Database Filec:\users\h180706\desktop\ursa\32a\32a\_17\_7\_95.db  
Dataset PathnameMAIN  
Dataset CreationFri Dec 02 10:29:26 2016

Cement Bond Log Shop Calibration Report

Serial-Model:12091451-A

Calibration Performed:Thu Dec 01 13:19:47 2016

Free Pipe Calibration

	Measured	Units
TT	244.6	usec
Amplitude	552.0	mV
Log Base Line	5.9	mV

Calibration References and Gain

Name	Value	Units
Pipe O.D.	4.500	in
Pipe Weight	11.6	lb/ft
Pipe Ref. Amp.	81.2	mV
Amp. Gain	0.149	

Reservoir Monitor Tool I Calibration Report

Serial-Model:12095949-A

Shop Calibration Performed:Thu Nov 24 11:32:44 2016

Carbon/Oxygen Mode

Stabilization

Result	Logged	Expected Value	Diff.	Tol.	Units
GENV	90.00	80.00	10.00	+/-15.00	V
ITCR2	3153	3250	-97	+/-250	cps

Near Detector

	Channel	Expected Value	Amplitude	FWHM	Tol.
H	60	60 +/-2	0.0259	5.51	<6.00
Fe	206	206 +/-2	0.0966	----	----
NGAIN = 0.996	NZOFF = 0.5				

Far Detector

	Channel	Expected Value	Amplitude	FWHM	Tol.
H	60	60 +/-2	0.0356	5.76	<6.50
Fe	210	208 +/-2	0.0903	----	----



FGAIN = 0.990	FZOFF = 0.5				
Flask Temperature	50.0 degF				
Result	Logged	Expected Value	Diff.	Tol.	Units
COIR2	0.45	0.45	-0.00	+/-0.02	
LIRI2	1.36	1.36	0.00	+/-0.05	
TCCR2	5059	5000	59	+/-1000	cps
ITCR2	3123	3200	-77	+/-250	cps

Sigma Mode					
Stabilization					
Result	Logged	Expected Value	Diff.	Tol.	Units
GENV	90.00	80.00	10.00	+/-15.00	V
FCAP	9856	10000	-144	+/-500	cps
Horizontal Water Tank					
Result	Logged	Expected Value	Diff.	Tol.	Units
N/F Normalizer	0.96	0.95	0.01		
N/F Inel Norm	0.62	0.61	0.01		
RNF	1.04	1.07	-0.03	+/-0.12	
RINC	1.61	1.64	-0.03	+/-0.18	
SGFN	24.07	24.00	0.07	+/-0.50	cu
SGFF	22.92	22.85	0.07	+/-0.50	cu
FSIN	23621	24000	-379	+/-2000	cps
FCAP	9956	10000	-44	+/-1000	cps
NFTR	0.82			<5.00	
FFTR	0.92			<5.00	
NBKG	190			<500	cps
FBKG	97			<500	cps
RTN	0.40	0.40	-0.00	+/-0.10	usec
RTF	0.42	0.40	0.02	+/-0.10	usec


Calibration Software Modules	
HRMTI Module	2015.5.4.0
RMTI Module	2015.10.16.1
Log Data Acquisition Software Modules	
HRMTI Module	2015.5.4.0
RMTI Module	2015.10.16.1

Gamma Ray Calibration Report
------------------------------

Type / Serial:	002 / 11214503
----------------	----------------

SHOP CALIBRATION		Wed Nov 09 16:25:32 2016			
	Counts/Sec.	Gain	Offset	Jig	Units
Background	34.1				cps
Calibrator	297.9				cps
		1.3950			GAPI/cps
PRIMARY VERIFICATION					
Background	42.3				cps
Calibrator	413.8				cps
Difference				371.5	GAPI
BEFORE SURVEY VERIFICATION					
Background	0.0				cps
Calibrator	0.0				cps
Difference				0.0	GAPI
AFTER SURVEY VERIFICATION					

Background	0.0		cps
Calibrator	0.0		cps
Difference		0.0	GAPI

Sensor	Offset (ft)	Schematic	Description	Length (ft)	O.D. (in)	Weight (lb)
CCL	35.82		STNDCH-STND_CH 1.4375 IN CABLE HEAD	1.50	1.44	1.00
GR	33.56		TTTCU-002 (11214503) Through Tubing Telemetry Cartridge - Ultrawire	7.65	1.69	100.00
			XHU-003 (000001) Crossover Halliburton 1553 to Ultrawire	1.58	1.69	7.00
RmtTFGT RmtTNGT	22.91 22.41		RMTI-A (12095949) Halliburton RMTI Tool	14.00	2.13	77.00
RmtFP5V RmtNFwvMcsP RmtCommFWa	14.66 14.66 14.66		X-OVER-GoxSondex Go Box x Sondex Pin CrossOver	0.27	1.69	1.00
			CENT-CASTM-CENT CAST M INLINE CENTRALIZER	2.16	3.13	25.00
Temp	9.57					
TT3FT AMP3FT WVF5FT	7.32 7.32 6.36		HCBLM-A (12091451) Halliburton HCBLM Tool	9.38	2.75	116.00
WVF3FT	2.84		CENT-CASTM-CENT CAST M INLINE CENTRALIZER	2.16	3.13	25.00
			AUH-001 (11072111) Adaptor Ultrawire/Halliburton	0.38	1.69	3.00
LLMTEN	0.00	BUL-001 (000001) Bullnose	0.30	1.69	1.50	

