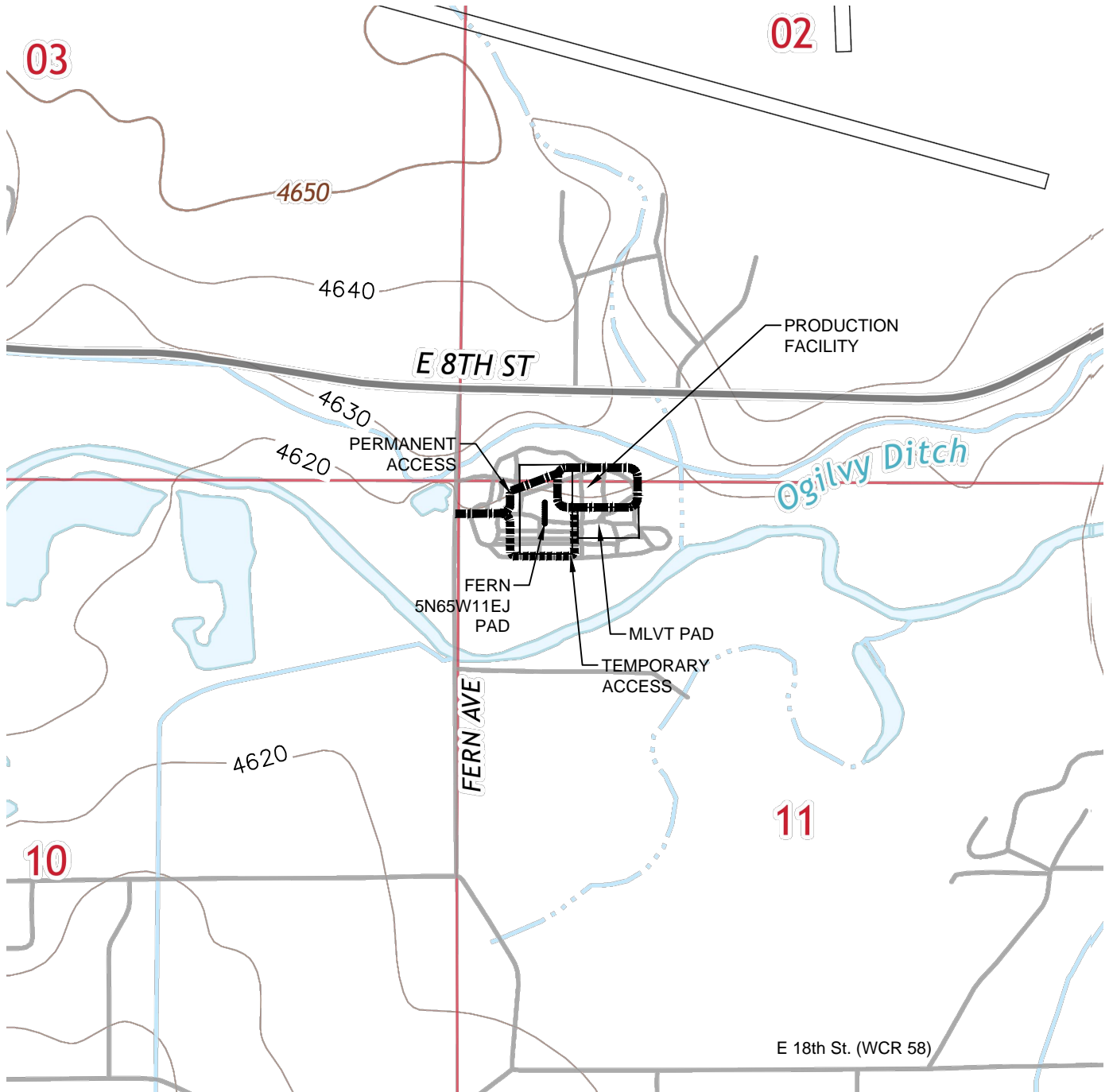




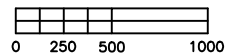
Washburn Land Surveying
www.WashburnSurveying.com
970-232-9645

ACCESS ROAD MAP FERN 5N65W11EJ PAD

SECTION: 11
TOWNSHIP: 5N
RANGE: 65W
6TH P.M.
WELD COUNTY, CO



Scale 1"=1000'

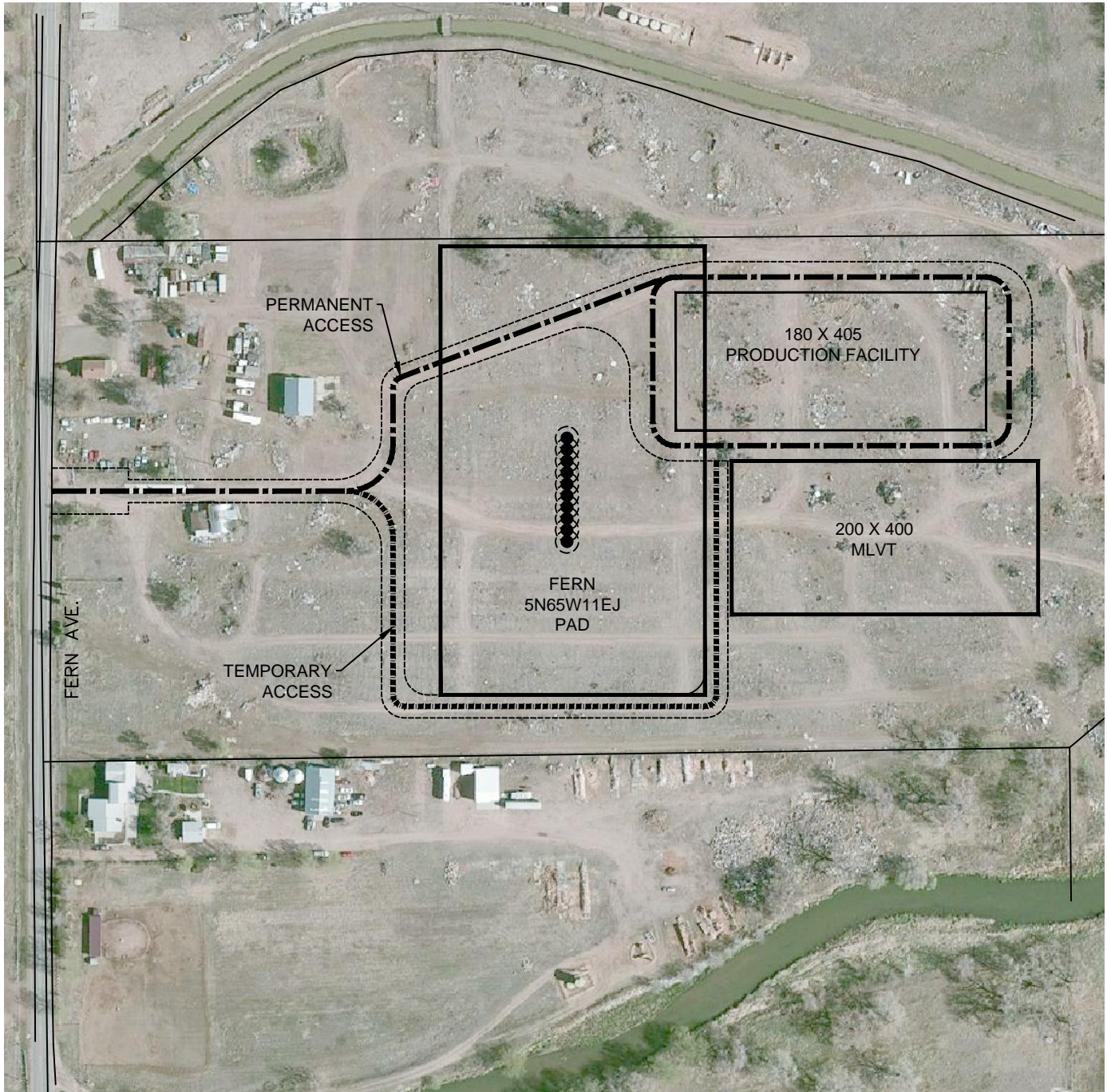




Washburn Land Surveying
www.WashburnSurveying.com
970-232-9645

ACCESS ROAD MAP FERN 5N65W11EJ PAD

SECTION: 11
TOWNSHIP: 5N
RANGE: 65W
6TH P.M.
WELD COUNTY, CO



DIRECTIONS:

FROM THE INTERSECTION OF EAST 8TH STREET AND FERN AVENUE, THENCE SOUTH ON FERN AVENUE FOR 831 FEET TO AN ACCESS TO THE EAST, THENCE EAST/NORTHEAST FOR 869 FEET TO PROPOSED PRODUCTION FACILITY OF THE WELL PAD.

Scale 1" = 300'

