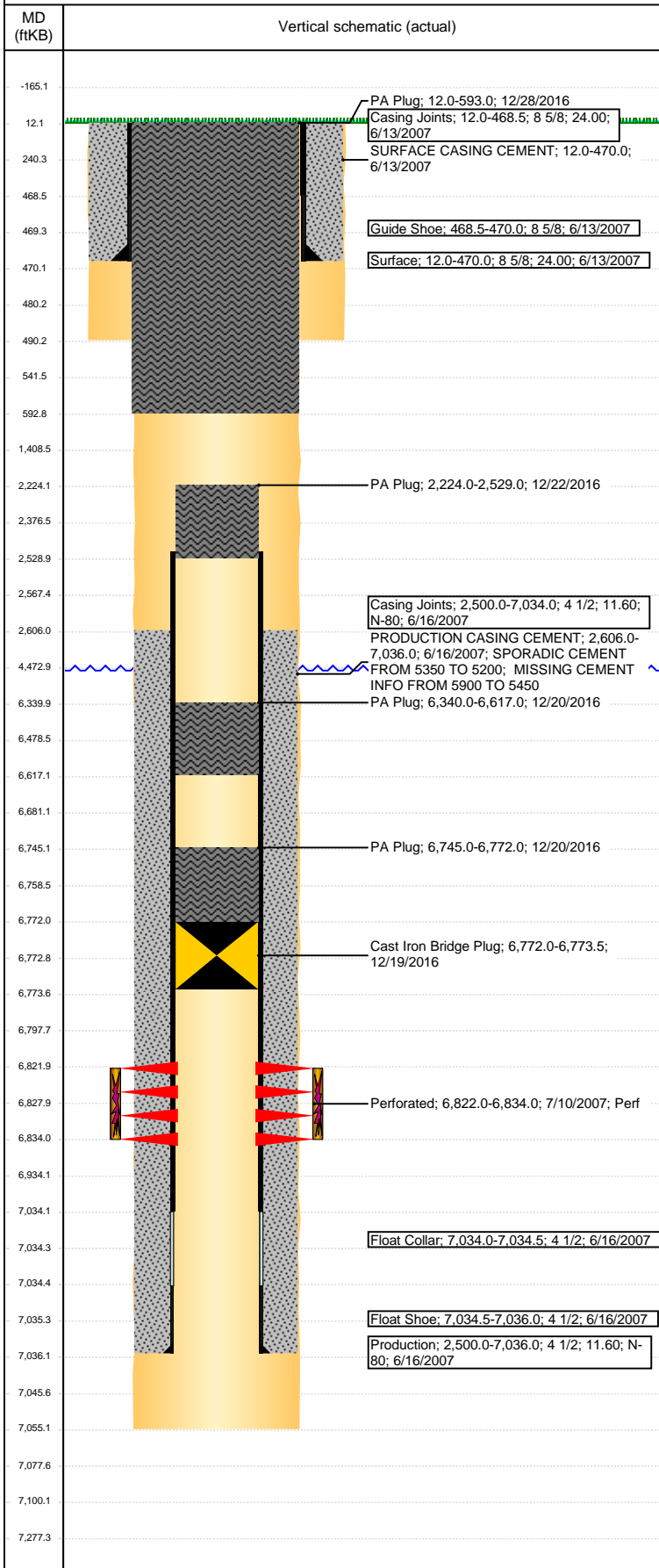


**Well Name: MCKENNEY 13-21**

VERTICAL - ORIGINAL HOLE, 1/20/2017 10:16:43 AM



Well Header								
API 05-123-25292		Business Unit DJ BASIN		District 15		Well Config VERTICAL		
Original KB Elevation (ft) 4,681		KB - GL / MSL (ftKB) 12.00		Spud Date 6/12/2007		P & A Date 12/21/2016		
Comment DISCREPANCY: LATEST PBTD DEEPER THAN TD								
Directions To Well								
Congressional Location								
Quarter 3 NE	Quarter 4 NW	Section 13	Township 6	Twnshp N/S Dir N	Range 64	Range E/W Dir W		
Bottom Hole Location								
North-South Distance (ft)		From N or S Line		East-West Distance (ft)		From E or W Line		
Plug Back Total Depths								
Date	Depth (ftKB)	Method		Com				
6/16/2007	7,021.0	TAG		FLOAT SHOE W/ BAFFLE				
7/13/2007	6,989.0	CASED HOLE LOG		DEPTH LOGGER ON CBL				
8/17/2007	7,100.0	TAG		CLEAN OUT TO LAND TUBING				
Wellbore Sections								
Section Des		Size (in)		Act Top, MD (ftKB)		Act Btm, MD (ftKB)		
SURFACE		12 1/4		12		490		
PRODUCTION		7 7/8		490		7,055		
Zone Statuses								
Zone Name	Status Date	Status	Fluid Type	Job	Prod Method			
CODELL	7/30/2007	PR	Water	DRILLING/CO...	Flowing			
CODELL	4/24/2010	PR						
CODELL	3/22/2016	PR						
Casing Strings								
Surface, 470.0ftKB								
Casing Description Surface		Run Date 6/13/2007	OD (in) 8 5/8	Wt/Len (l... 24.00	Grade	Top, MD (ft... 12.0	MD (ftKB) 470.0	
Production, 7,036.0ftKB								
Casing Description Production		Run Date 6/16/2007	OD (in) 4 1/2	Wt/Len (l... 11.60	Grade N-80	Top, MD (ft... 12.0	MD (ftKB) 7,036.0	
Cement								
Description SURFACE CASING CEMENT				Top Depth (ftKB) 12.0		Bottom Depth (ftKB) 470.0		
Description PRODUCTION CASING CEMENT				Top Depth (ftKB) 2,606.0		Bottom Depth (ftKB) 7,036.0		
Description PA Plug				Top Depth (ftKB) 6,745.0		Bottom Depth (ftKB) 6,772.0		
Description PA Plug				Top Depth (ftKB) 6,340.0		Bottom Depth (ftKB) 6,617.0		
Description PA Plug				Top Depth (ftKB) 2,224.0		Bottom Depth (ftKB) 2,529.0		
Description PA Plug				Top Depth (ftKB) 12.0		Bottom Depth (ftKB) 593.0		
Tubing Strings								
Tubing Description Tubing		Run Date 8/31/2007	String... 2 3/8	ID (in)	Wt (lb/ft)	Grade	Len (ft) 6,784.00	Set De...
Other In Hole								
Run Date		Des			OD (in)	Top (ftKB)	Btm (ftKB)	
12/19/2016		Cast Iron Bridge Plug			3.99	6,772.0	6,773.5	
Logs								
Date		Type			Top, MD (ftKB)		Btm, MD (ftKB)	
6/16/2007		COMPENSATED DENSITY			3,490.0		7,032.0	
6/16/2007		INDUCTION			481.0		7,052.0	
7/13/2007		CBL/CCL/GR			2,500.0		6,987.0	
Perforation Data								
Linked Zone		Bnch/St g	Entered Shot Total	Top (ftKB)		Btm (ftKB)		Date
CODELL, ORIGINAL HOLE			48	6,822.00		6,834.00		7/10/2007

**Well Name: MCKENNEY 13-21**

VERTICAL - ORIGINAL HOLE, 1/20/2017 10:16:45 AM

## Stimulation Intervals

Start Date  
7/11/2007

Primary Job Type  
DRILLING/COMPLETION - ORIGINAL

Technical Result

Tech Result Details

Tech Result Note

Comment

