

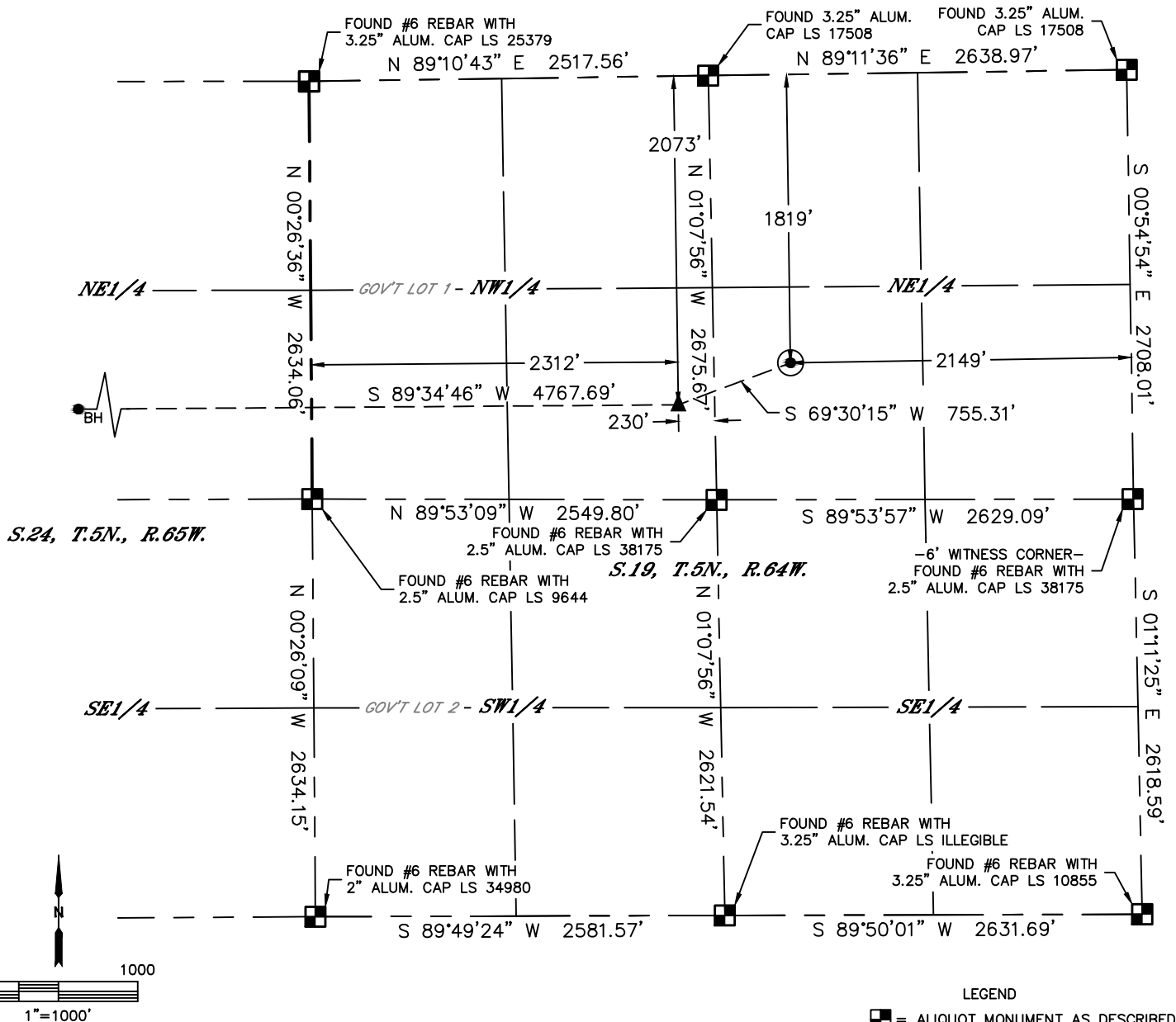


Lat40°, Inc. 6250 W. 10th Street, Unit 2, Greeley, CO 970-515-5294

WELL LOCATION CERTIFICATE

JOSEPHINE190-214

SECTION: 19
TOWNSHIP: 5N
RANGE: 64W
6TH. P.M.
WELD COUNTY, CO



CLIENT: PDC ENERGY, INC.						LANDMAN: BARNEY HAMMOND			
INSTRUMENT OPERATOR: CASEY KOHOUT						SURVEY DATE: 10/4/2016		SURFACE USE: CROP LAND	
SHL FOOTAGE			SHL LAT °		SHL LONG °	SHL PDOP	SHL ELEV (FT.)	SHL 1/4/1/4	SHL S-T-R
1819	FNL	2149	FEL	40.38689	-104.59105	1.6	4626	SWNE	19-5-64

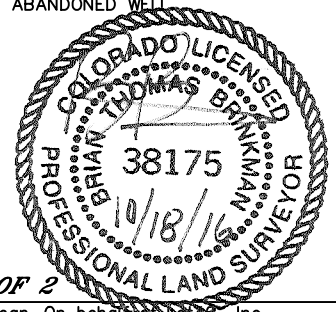
BHL FOOTAGE				BHL LAT °	BHL LONG °	BHL S-T-R	EP LAT °	EP LONG °	EP S-T-R
2073	FNL	2455	FEL	40.38622	-104.61071	24-5-65	40.38618	-104.59360	19-5-64

NOTE:

- Bearings shown are Grid Bearings of the Colorado State Plane Coordinate System, North Zone, North American Datum 1983. The lineal dimensions as contained herein are based upon the "U.S. Survey Foot."
- Distances to section lines measured at 90 degrees from said section lines.
- Ground elevations are based on an observed GPS elevation (NAVD 1988 DATUM).
- Latitude and Longitude shown are (NAD 83 DATUM).
- IMPROVEMENTS: See LOCATION DRAWING for all visible improvements within 500' of oil and gas location.
- This map does not represent a boundary survey.

NEAREST CULTURAL ITEMS	
BUILDING	±1520' NE
BUILDING UNIT	±1664' NW
HIGH OCCUPANCY BUILDING UNIT	5280'+
DESIGNATED OUTSIDE ACTIVITY AREA	5280'+
PUBLIC ROAD (HIGHWAY 34)	±1821' N
ABOVE GROUND UTILITY	±658' NW
RAILROAD	±2030' SE
PROPERTY LINE	±438' W

- LEGEND
- = ALIQUOT MONUMENT AS DESCRIBED
 - = CALCULATED POSITION
 - = SURFACE HOLE LOCATION (SHL)
 - ▲ = ENTRY POINT LOCATION (EP)
 - BH = BOTTOM HOLE LOCATION (BHL)
 - ⊕ = EXISTING WELL
 - ⊙ = ABANDONED WELL



SHEET 1 OF 2

Brian T. Brinkman—On behalf of Lat40°, Inc.
Colorado Licensed Professional Land Surveyor No. 38175
DATE: 10/17/2016
PROJECT#: 2016070

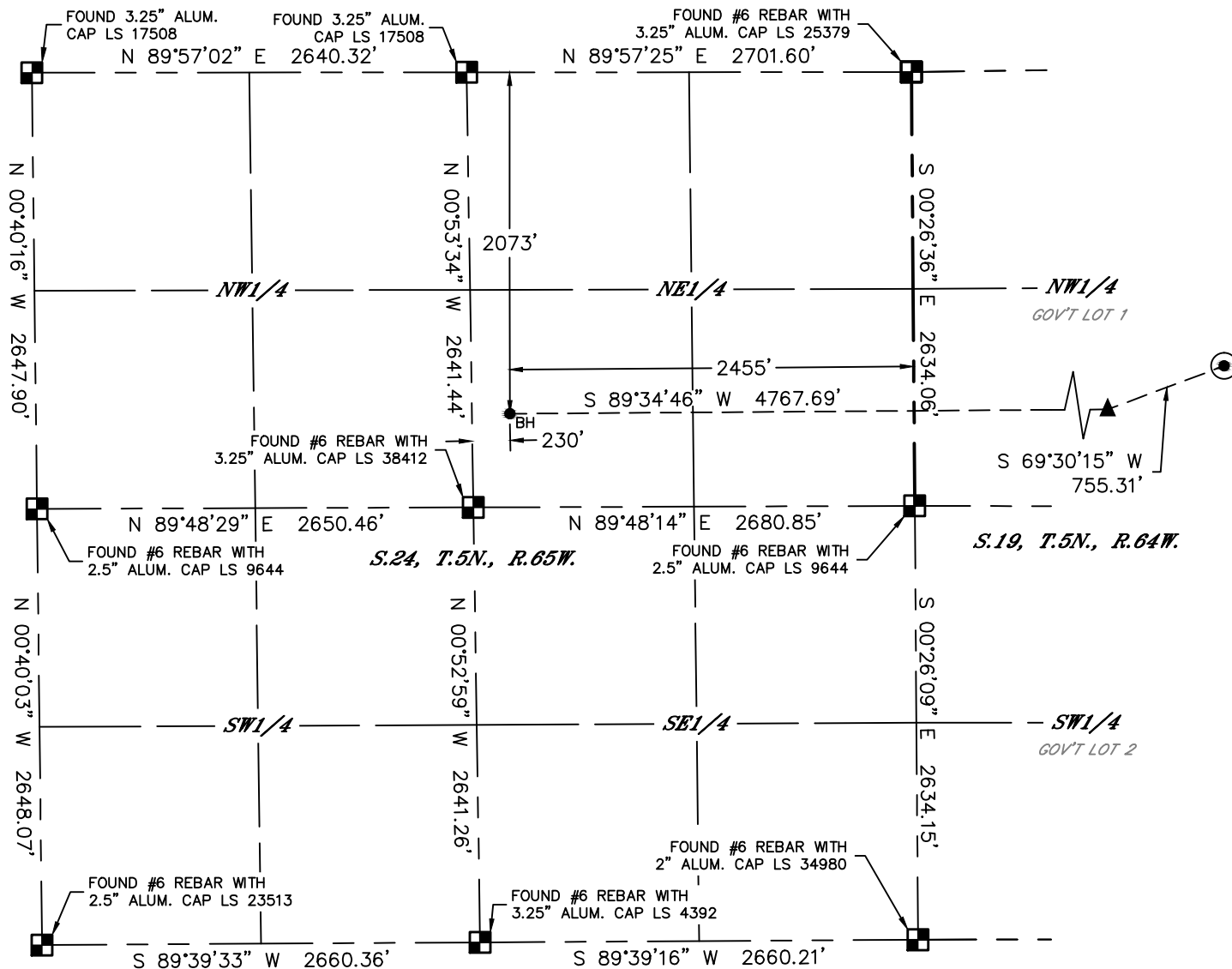


Lat40°, Inc. 6250 W. 10th Street, Unit 2, Greeley, CO 970-515-5294

WELL LOCATION CERTIFICATE

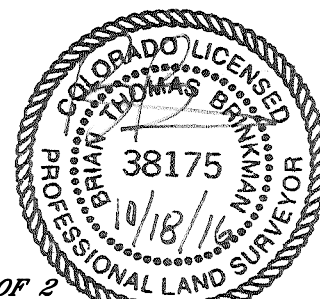
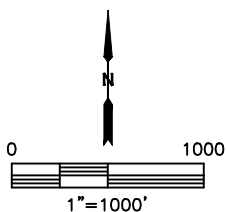
JOSEPHINE190-214

SECTION: 19
TOWNSHIP: 5N
RANGE: 64W
6TH. P.M.
WELD COUNTY, CO



LEGEND

- = ALIQUOT MONUMENT AS DESCRIBED
- = CALCULATED POSITION
- = SURFACE HOLE LOCATION (SHL)
- ▲ = ENTRY POINT LOCATION (EP)
- BH = BOTTOM HOLE LOCATION (BHL)
- ⊙ = EXISTING WELL
- ⊙ = ABANDONED WELL



SHEET 2 OF 2

Brian T. Brinkman—On behalf of Lat40°, Inc.
Colorado Licensed Professional Land Surveyor No. 38175
DATE: 10/17/2016
PROJECT#: 2016070