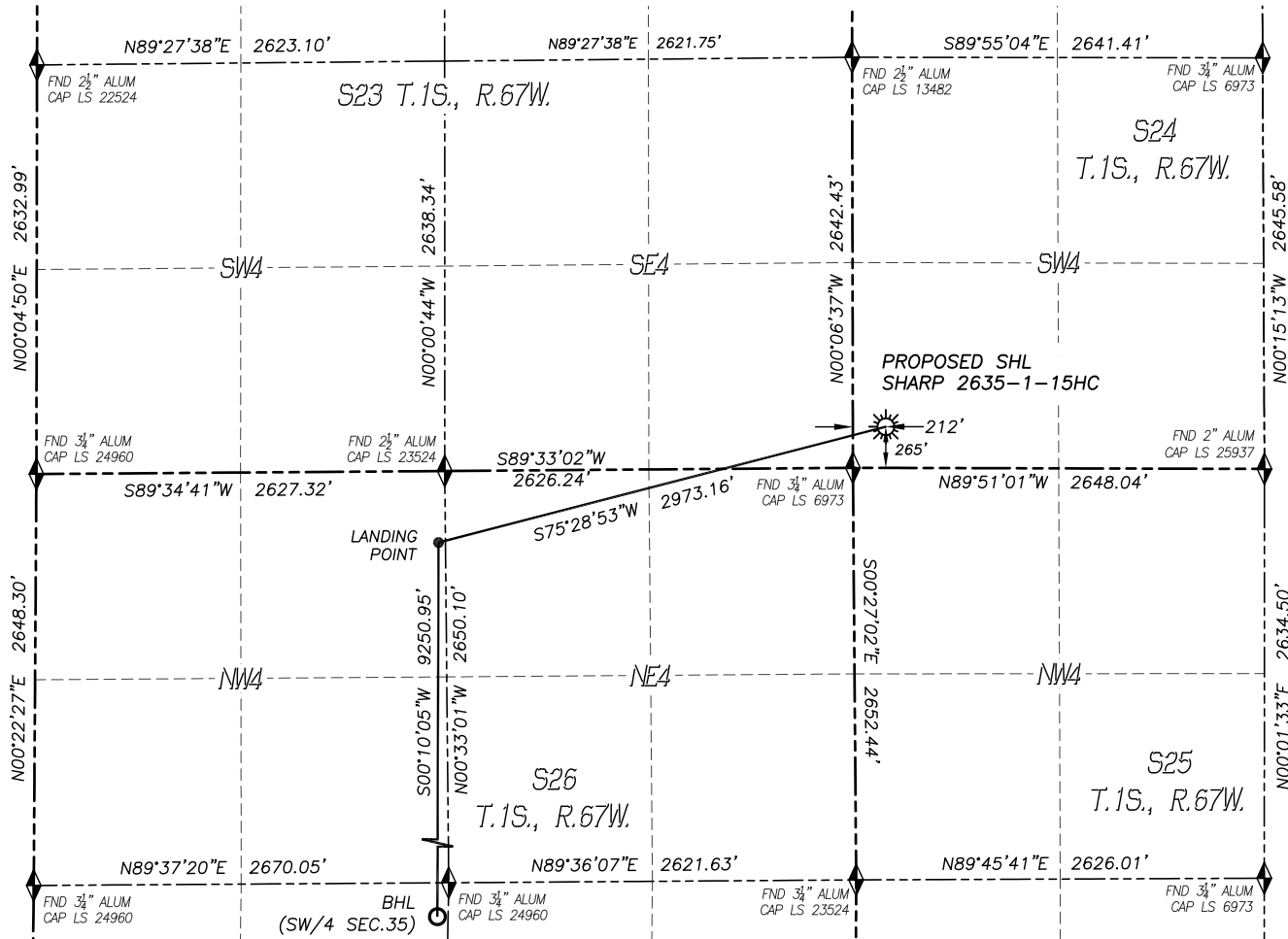


WELL LOCATION CERTIFICATE
SHARP 2635-1-15HC

SECTION: 24
TOWNSHIP: 1S
RANGE: 67W



NAD 83 LATITUDE AND LONGITUDE

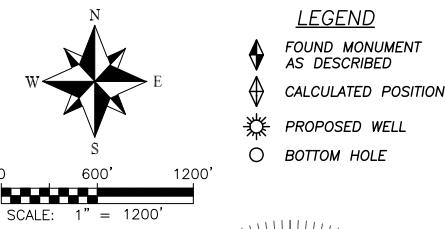
SHARP 2635-1-15HC SURFACE HOLE:
 LATITUDE: N39.94407°
 LONGITUDE: W104.84597°
 ELEVATION: 5019'
 FOOTAGE: 265' FSL, 212' FWL
 PDOP: 1.3
 QTR/QTR: SW4/SW4

LANDING POINT:
 LATITUDE: N39.94203°
 LONGITUDE: W104.85623°
 FOOTAGE: 460' FNL, 2590' FWL
 SEC. 26, T1S, R67W

BOTTOM HOLE:
 LATITUDE: N39.91664°
 LONGITUDE: W104.85632°

NEAREST CULTURAL ITEMS:

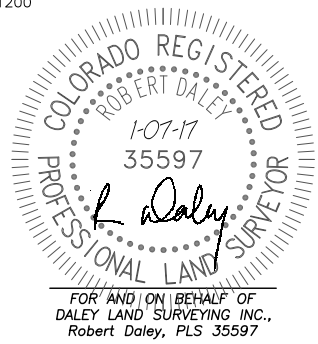
BUILDING:	582± SE
BUILDING UNIT:	588± SE
HIGH OCC. BLD. UNIT:	5280'+
DES. OUTSIDE ACTIVITY AREA:	5280'+
PUBLIC ROAD:	254± S
ABOVE GROUND UTILITY:	233± S
RAILROAD:	1771± SE
PROPERTY LINE:	212± W



- NOTES:**
- 1) BEARINGS FOR THIS MAP ARE ASSUMED AND BASED UPON GPS OBSERVATIONS MADE BETWEEN MONUMENTS LOCATED AT THE SOUTHWEST CORNER AND SOUTH QUARTER CORNER OF SECTION 24, T.1S., R.67W.
 - 2) HORIZONTAL DATUM IS NAD83.
 - 3) VERTICAL DATUM IS NAVD88 AND ORIGINATES FROM THE LOCAL C.O.R.S. NETWORK, UTILIZING THE GEOID12A MODEL.
 - 4) SEE LOCATION DRAWING FOR VISIBLE IMPROVEMENTS WITHIN 500' OF PROPOSED DISTURBED AREA.
 - 5) SURFACE USE: AGRICULTURAL.
 - 6) INST. OPERATOR: SCOTT ESTABROOKS

IN ACCORDANCE WITH A REQUEST FROM WARD PETROLEUM, DALEY LAND SURVEYING, INC. HAS DETERMINED THE SURFACE LOCATION OF THE SHARP 2635-1-15HC WELL TO BE 265' FSL, 212' FWL, AS MEASURED AT NINETY (90) DEGREES FROM THE SECTION LINES OF SECTION 24, TOWNSHIP 1 SOUTH, RANGE 67 WEST, AND THE BOTTOM HOLE LOCATION TO BE 850' FSL, 2590' FWL, AS MEASURED AT NINETY (90) DEGREES FROM THE SECTION LINES OF SECTION 35, TOWNSHIP 1 SOUTH, RANGE 67 WEST OF THE 6TH PRINCIPAL MERIDIAN, ADAMS COUNTY, COLORADO.

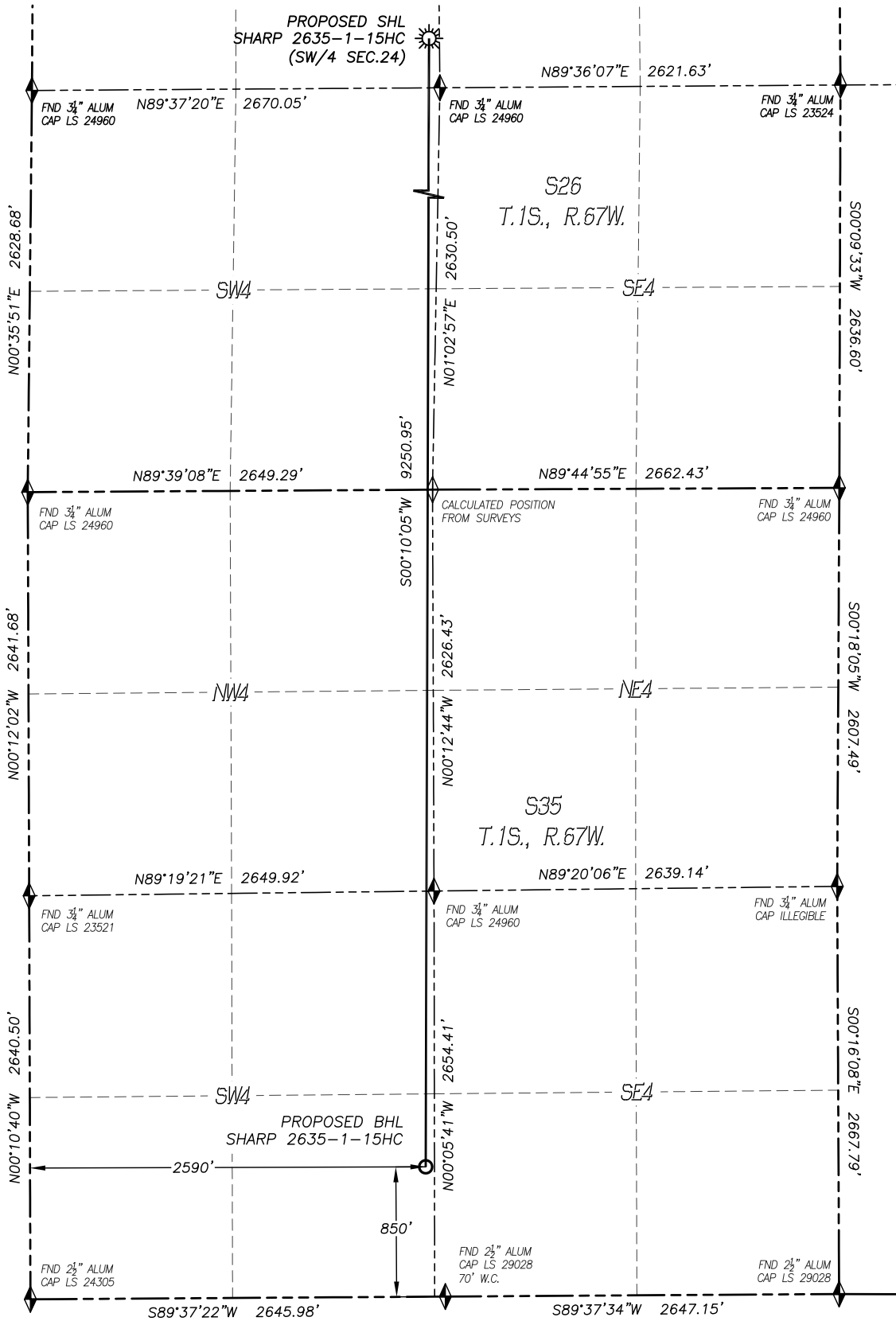
I HEREBY CERTIFY THAT THIS WELL LOCATION CERTIFICATE WAS PREPARED BY ME OR UNDER MY DIRECT SUPERVISION, THAT THE WORK WAS COMPLETED ON 10/31/16 FOR AND ON BEHALF OF WARD PETROLEUM, AND THAT THIS MAP DOES NOT REPRESENT A BOUNDARY SURVEY, IT IS NOT A LAND SURVEY PLAT OR AN IMPROVEMENT SURVEY PLAT AND IT IS NOT TO BE RELIED UPON FOR THE ESTABLISHMENT OF FENCE, BUILDING OR OTHER FUTURE IMPROVEMENT LINES.



\\Survey\1304001\Drawings\Sharp 2635-1-15HC.dwg

WELL LOCATION CERTIFICATE
SHARP 2635-1-15HC

SECTION: 24
TOWNSHIP: 1S
RANGE: 67W



- LEGEND**
- ◆ FOUND MONUMENT AS DESCRIBED
 - ☀ PROPOSED WELL
 - ⊙ EXISTING WELL
 - BOTTOM HOLE
 - ⊘ ABANDONED WELL
 - ◇ CALCULATED POSITION

