

OPERATOR: **Extraction Oil & Gas**
 WELL NAME: **Hester Farms F-36HN**
 FIELD NAME: DJ Basin - Wattenberg
 DRILLING RIG: Cyclone 37
 API #: 05-123-42001

LAT/LONG: 40.533415, -104.83138
 SURFACE HOLE: SWNW S31-T7N-R66W, 1664' FNL, 202' FWL
 BOTTOM HOLE: S34-T7N-R67W, 1150' FNL, 470' FWL



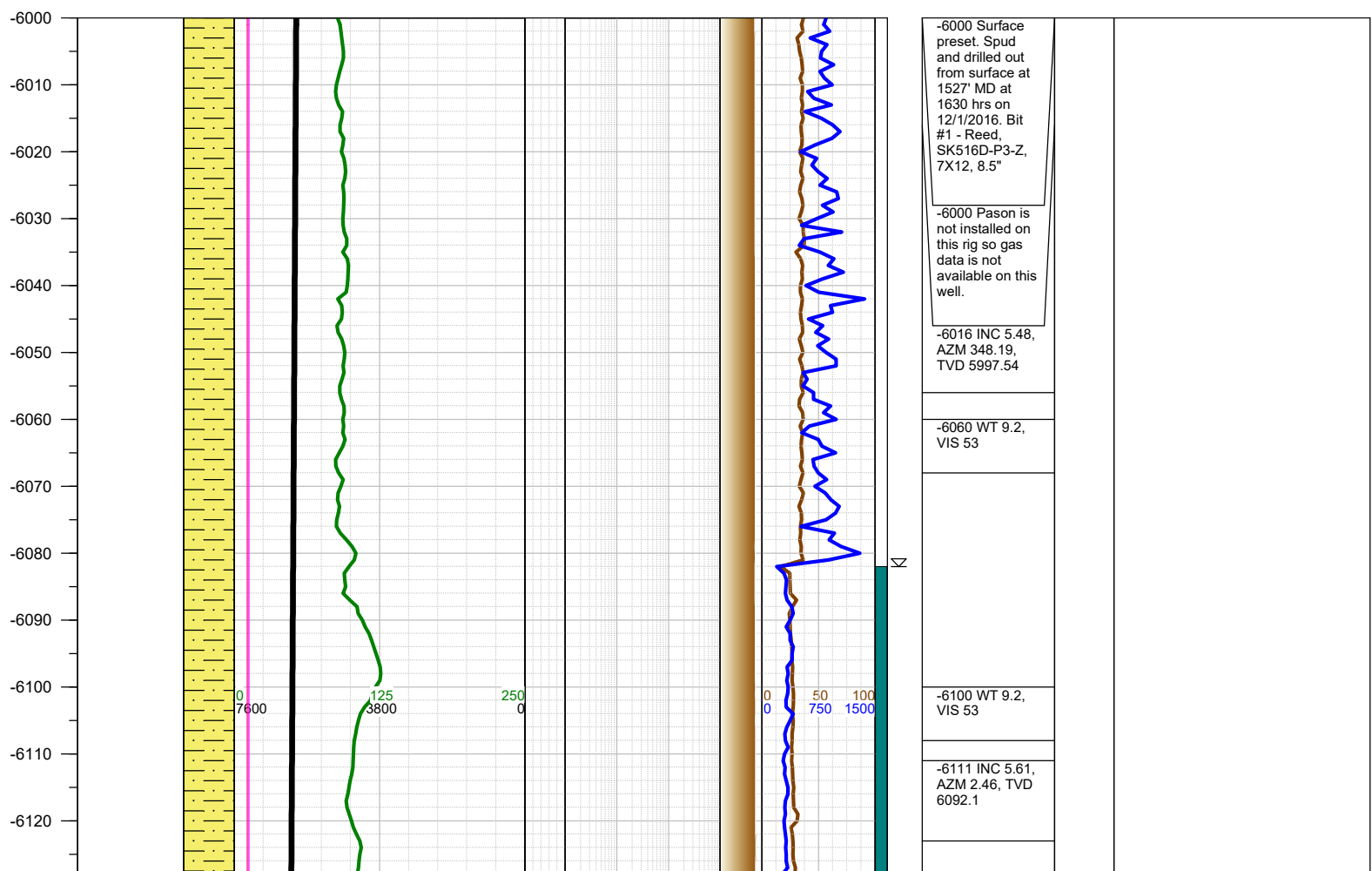
COUNTY: Weld
 STATE: Colorado
 GROUND ELEVATION: 4914'
 KELLY BUSHING: 4942'
 DRILLING FLUID: OBM
 TVD VS. MD: 7193' / 11966'
 SPUD DATE: December 1, 2016
 TD DATE: December 4, 2016
 DEPTHS LOGGED: 6000' - 11966'
 DATES LOGGED: December 1, 2016 - December 4, 2016
 GEOLOGISTS: Blue Spikes, Brian Whitfield
 SCALE: 5" = 100'

LEGEND

	CHALK		SHALE
	LIMESTONE		SILTY SHALE
	SHALY LIMESTONE		SHALY SILTSTONE
	MARLSTONE		SHALY SANDSTONE
	CALCAREOUS SHALE		SANDSTONE
	DOLOMITE		ANHYDRITE

FORMATION CONNECTION MIDNIGHT NEW BIT GAS SHOW FAULT

MEASURED DEPTH (FT)	PHOTOS	MUDLOGGER INTERP	GEOSTEERING INTERP		F > B	GAS	MUD VOL. 800 bbl	ROF	WOB	SLIDES SYMBOLS	COMMENTS	CUTTINGS %	SAMPLE DESCRIPTION
			Target Top / Base										
			TVD	GAMMA		Total	0	0					
			ft	api		C1	1500	100					
			7600	250		C2							
						C3							
						C4							



-6130
-6140
-6150
-6160
-6170
-6180
-6190
-6200
-6210
-6220
-6230
-6240
-6250
-6260
-6270
-6280
-6290
-6300
-6310
-6320
-6330
-6340
-6350
-6360
-6370
-6380
-6390



0
7600

125
3800

250
0

0
7600

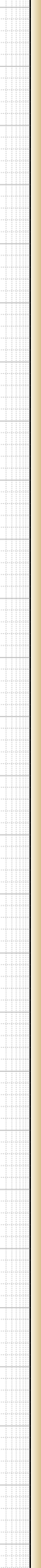
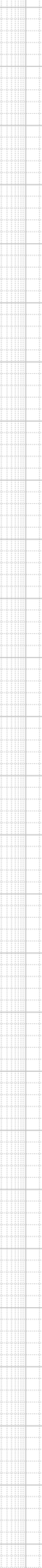
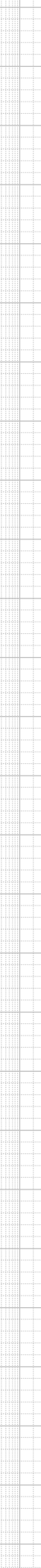
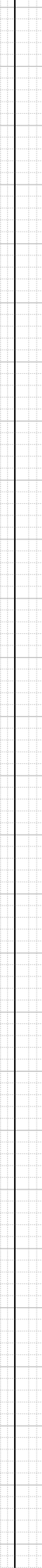
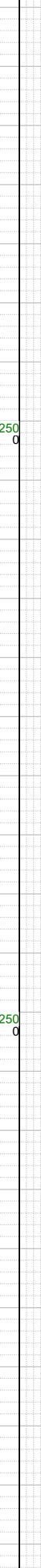
125
3800

250
0

0
7600

125
3800

250
0



0
0

50
750

100
1500

0
0

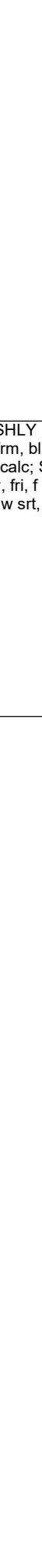
50
750

100
1500

0
0

50
750

100
1500



-6206 INC 5.92,
AZM 15.96,
TVD 6186.62

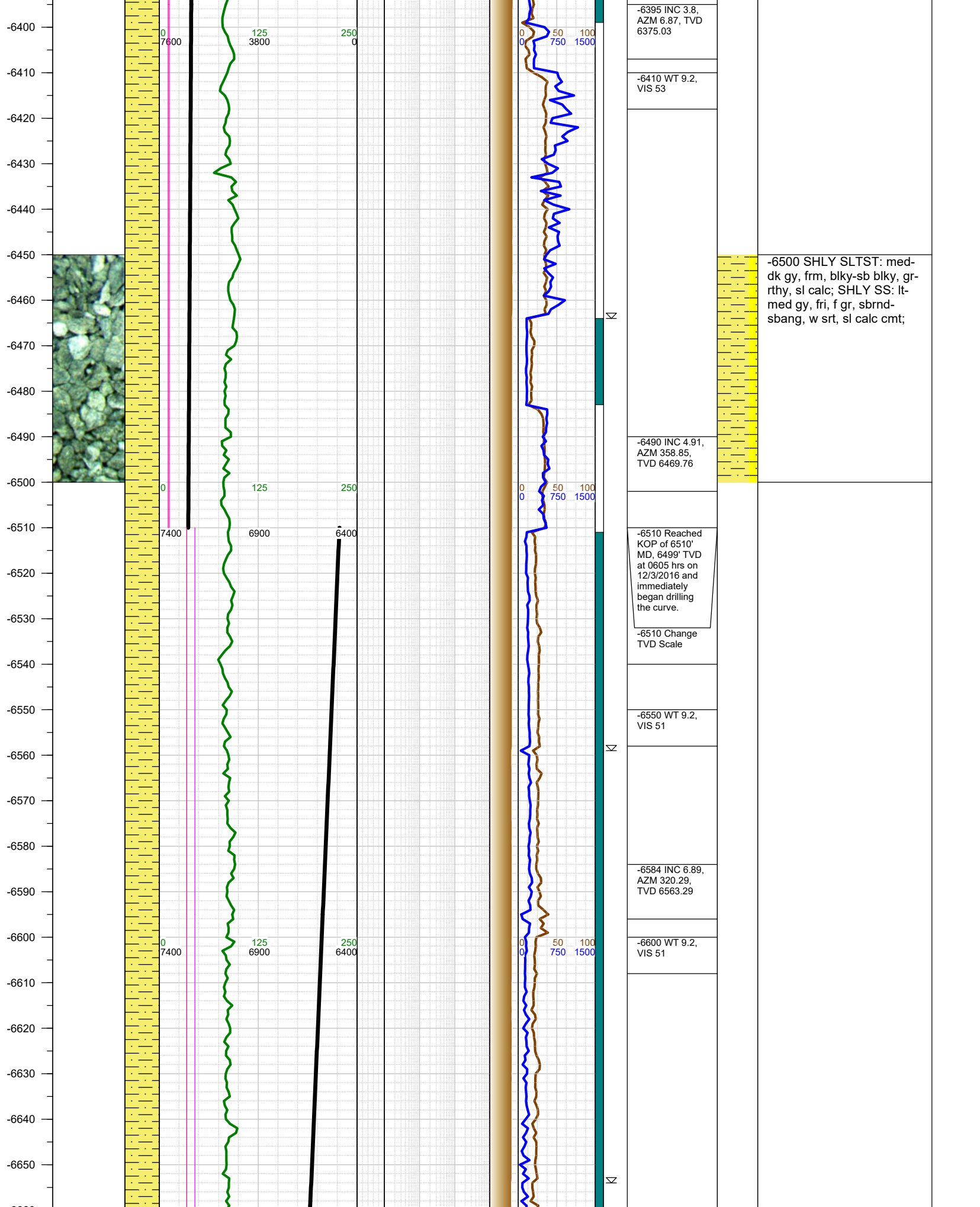
-6220 WT 9.2,
VIS 53

-6301 INC 4.11,
AZM 12.79,
TVD 6281.25

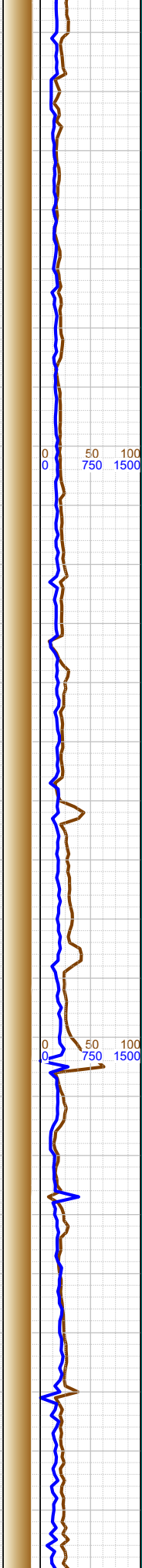
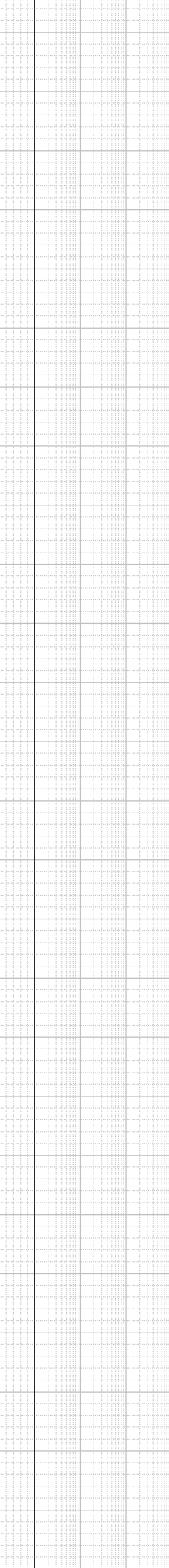
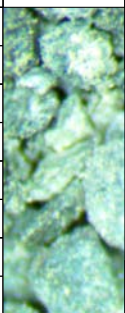
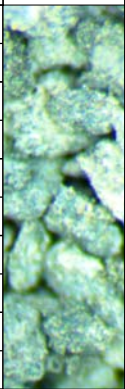
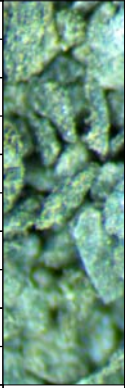
-6320 WT 9.2,
VIS 53



-6250 SHLY SLTST: med-
dk gy, frm, blk-y-sb blk-y, gr-
rthy, sl calc; SHLY SS: lt-
med gy, fri, f gr, sbrnd-
sbang, w srt, sl calc cmt;



-6930
-6940
-6950
-6960
-6970
-6980
-6990
-7000
-7010
-7020
-7030
-7040
-7050
-7060
-7070
-7080
-7090
-7100
-7110
-7120
-7130
-7140
-7150
-7160
-7170
-7180
-7190



-6962 INC
26.69, AZM
284.07, TVD
6928.69

-7000 WT 9.2,
VIS 51

-7057 INC
36.59, AZM
276.27, TVD
7009.5

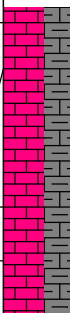
-7100 WT 9.2,
VIS 51

-7131 Top
Sharon Springs
Formation;
7065' TVD

-7152 INC
44.98, AZM
271.77, TVD
7081.38

-7158 Top
Niobrara
Formation;
7085' TVD

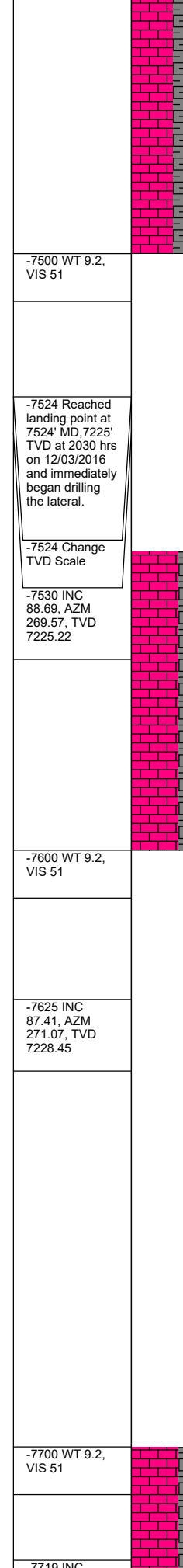
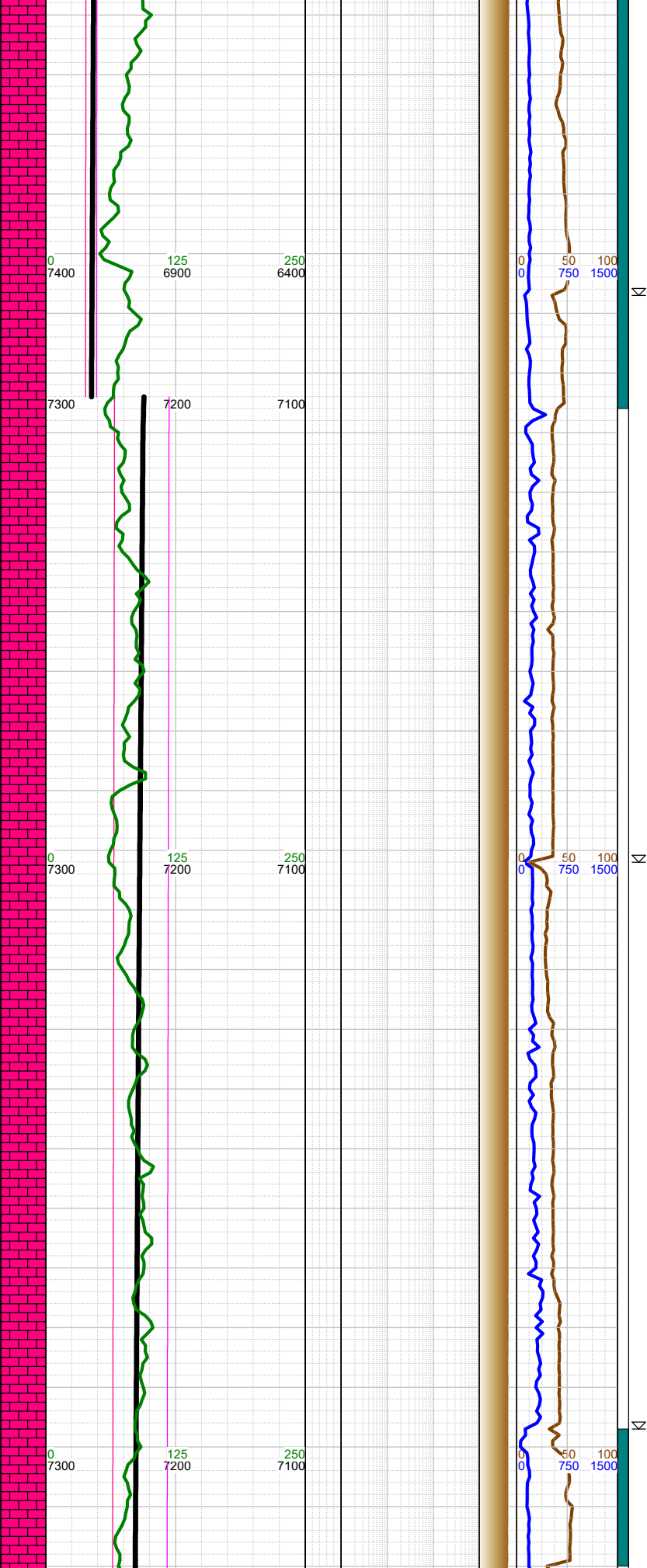
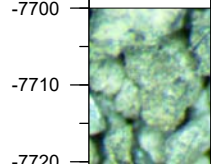
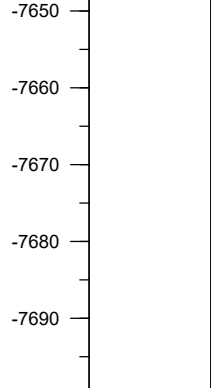
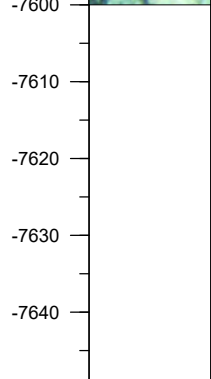
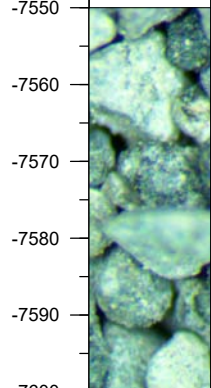
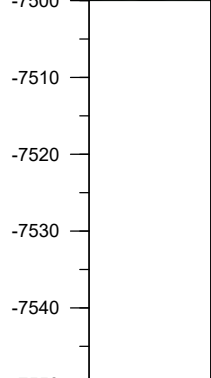
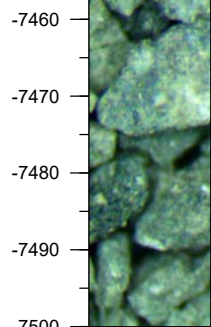
-7183 Top A
Chalk
Formation;



-7000 SHLY SLTST: med-
dk gy, frm, blkly-sb blkly, gr-
rthy, sl calc

-7100 SHLY SLTST: med-
dk gy, frm, blkly-sb blkly, gr-
rthy, sl calc

-7200 CHK: med gy, sft-
sbfrm, sbbkly, mot, v calc,
rthy lstr ; MARL: dk gy-blk,
sbbkly-sbply, sft-sbfrm,
mod calc, sl arg; tr fos
frags; tr bent



sft-sbfrm, sbbkly, mot, v calc, rthy lstr; MARL: dk gy-blk, sbbkly-sbply, sft-sbfrm, v calc, mod arg, sl silty; tr bent, tr forams;

-7500 WT 9.2, VIS 51

-7524 Reached landing point at 7524' MD, 7225' TVD at 2030 hrs on 12/03/2016 and immediately began drilling the lateral.

-7524 Change TVD Scale

-7530 INC 88.69, AZM 269.57, TVD 7225.22

-7600 CHK: lt-med gy-brn, sft-sbfrm, sbbkly, mot, v calc, rthy lstr; MARL: dk gy-blk, sbbkly-sbply, sft-sbfrm, v calc, mod arg, sl silty; tr bent, tr forams;

-7600 WT 9.2, VIS 51

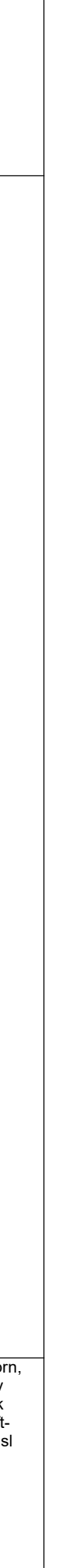
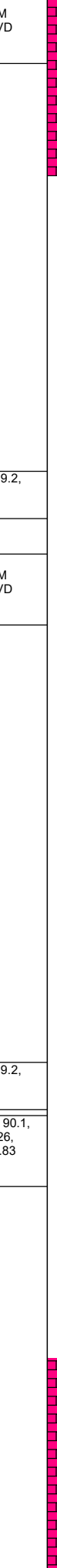
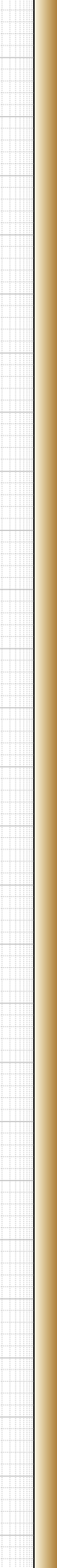
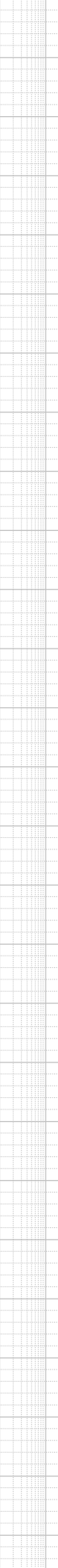
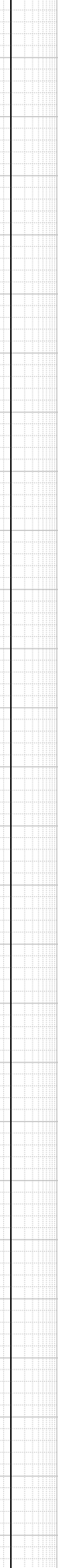
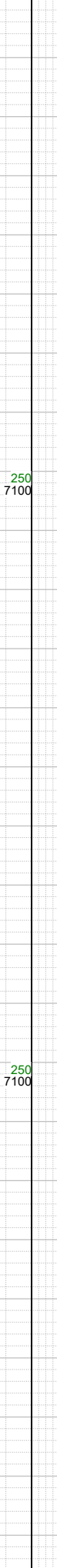
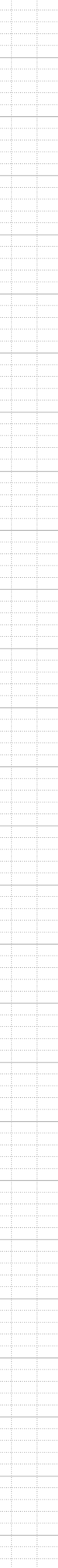
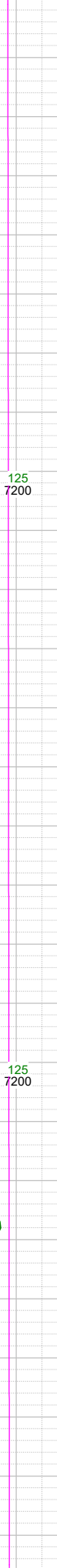
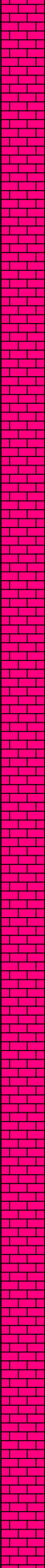
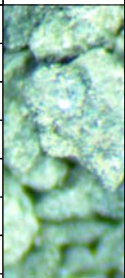
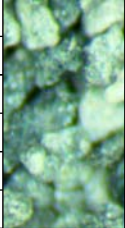
-7625 INC 87.41, AZM 271.07, TVD 7228.45

-7700 WT 9.2, VIS 51

-7750 CHK: lt-med gy-brn, sft-sbfrm, sbbkly, mot, v calc, rthy lstr; MARL: dk gy-blk, sbbkly-sbply, sft-sbfrm, v calc, mod arg, sl silty; tr bent, tr forams;

7719 INC

-7720
-7730
-7740
-7750
-7760
-7770
-7780
-7790
-7800
-7810
-7820
-7830
-7840
-7850
-7860
-7870
-7880
-7890
-7900
-7910
-7920
-7930
-7940
-7950
-7960
-7970
-7980



-7719 INC
89.31, AZM
269.48, TVD
7231.14

-7800 WT 9.2,
VIS 51

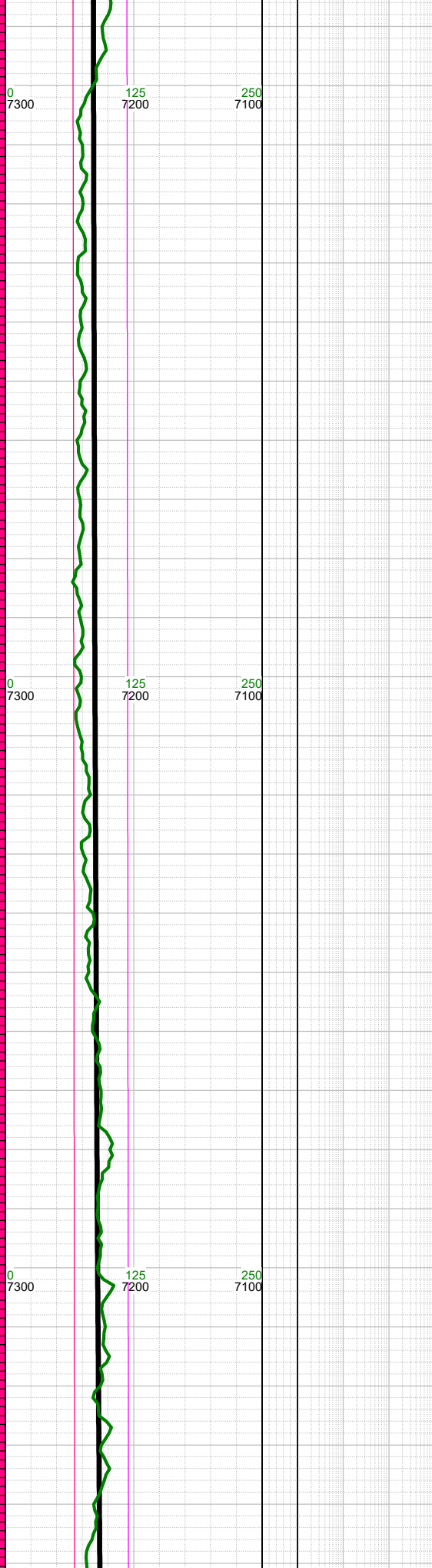
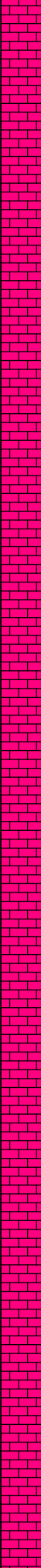
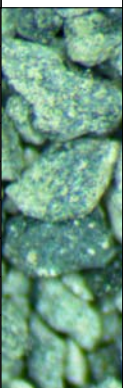
-7814 INC
89.88, AZM
269.26, TVD
7231.81

-7900 WT 9.2,
VIS 51

-7909 INC 90.1,
AZM 269.26,
TVD 7231.83

-8000 CHK: lt-med gy-brn,
sft-sbfrm, sbbkly, mot, v
calc, rthy lstr; MARL: dk
gy-blk, sbbkly-sbplty, sft-
sbfrm, v calc, mod arg, sl
silty; tr bent, tr pyr tr
forams, tr fos frag;;

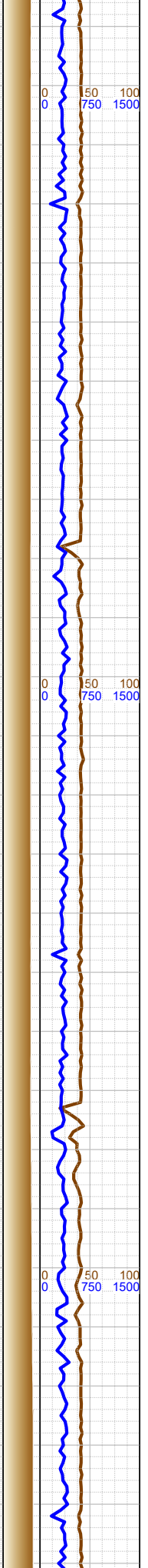
-7990
-8000
-8010
-8020
-8030
-8040
-8050
-8060
-8070
-8080
-8090
-8100
-8110
-8120
-8130
-8140
-8150
-8160
-8170
-8180
-8190
-8200
-8210
-8220
-8230
-8240
-8250



0 125 250
7300 7200 7100

0 125 250
7300 7200 7100

0 125 250
7300 7200 7100



0 50 100
0 750 1500

0 50 100
0 750 1500

0 50 100
0 750 1500

∞

-8004 INC
90.41, AZM
269.57, TVD
7231.41

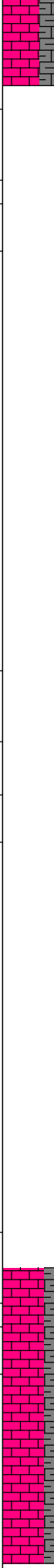
-8020 WT 9.2,
VIS 51

-8099 INC
90.81, AZM
269.48, TVD
7230.4

-8120 WT 9.2,
VIS 51

-8194 INC
91.52, AZM
269.88, TVD
7228.47

-8210 WT 9.2,
VIS 51



-8250 CHK: lt-med gy-brn,
sft-sbfrm, sbbkly, mot, v
calc, rthy lstr; MARL: dk
gy-blk, sbbkly-sbplty, sft-
sbfrm, v calc, mod arg, sl
silty, tr forams;

-8260
-8270
-8280
-8290
-8300
-8310
-8320
-8330
-8340
-8350
-8360
-8370
-8380
-8390
-8400
-8410
-8420
-8430
-8440
-8450
-8460
-8470
-8480
-8490
-8500
-8510



0
7300

125
7200

250
7100

0
7300

125
7200

250
7100

0
7300

125
7200

250
7100

0
0

50
750

100
1500

0
0

50
750

100
1500

0
0

50
750

100
1500



-8270 0000 hrs
on 12/4/2016

-8288 INC 92.4,
AZM 270.05,
TVD 7225.26

-8300 WT 9.2,
VIS 51

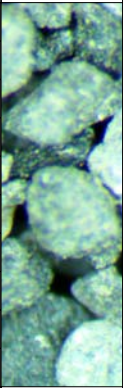
-8383 INC
90.72, AZM
270.19, TVD
7222.67

-8400 WT 9.2,
VIS 51

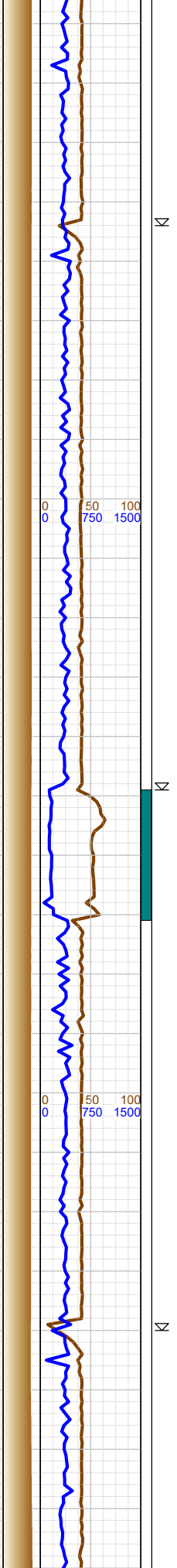
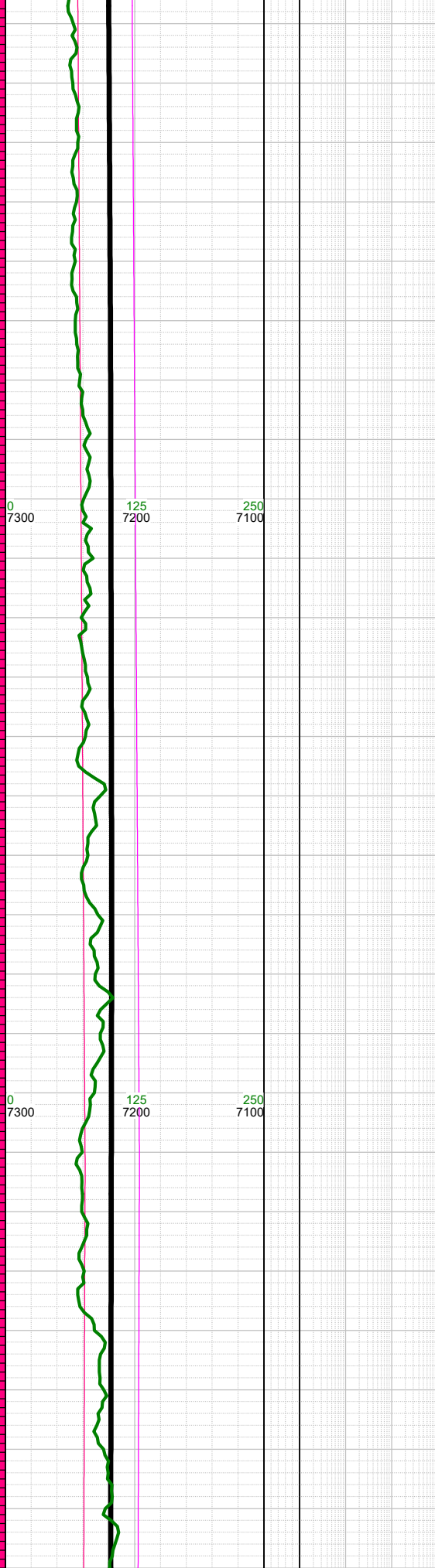
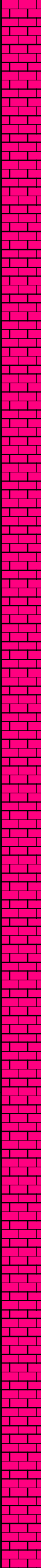
-8500 CHK: lt-med gy-brn,
sft-sbfrm, sbbkly, mot, v
calc, rthy lstr; MARL: dk
gy-blk, sbbkly-sbply, sft-
sbfrm, v calc, mod arg, sl
silty, tr pry, tr forams;

-8478 INC
91.12, AZM
271.38, TVD
7221.14

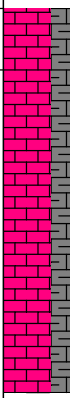
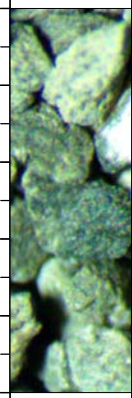
-8500 WT 9.2,
VIS 51



-8520
-8530
-8540
-8550
-8560
-8570
-8580
-8590
-8600
-8610
-8620
-8630
-8640
-8650
-8660
-8670
-8680
-8690
-8700
-8710
-8720
-8730
-8740
-8750
-8760
-8770
-8780

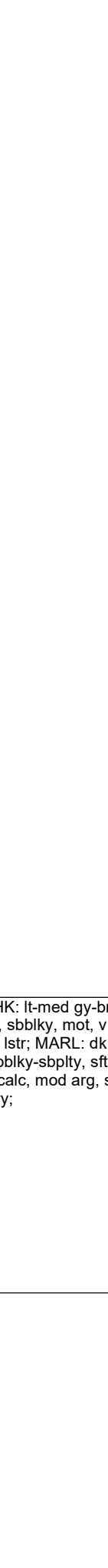
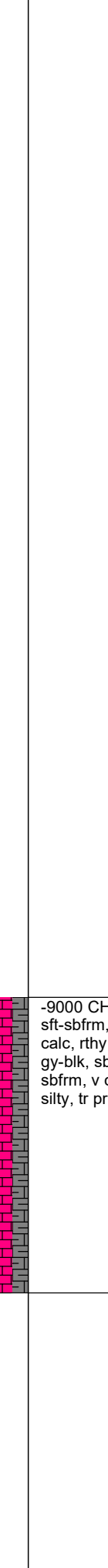
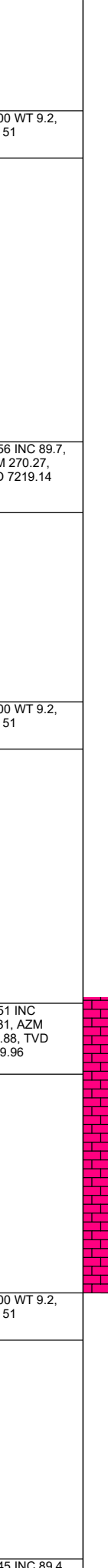
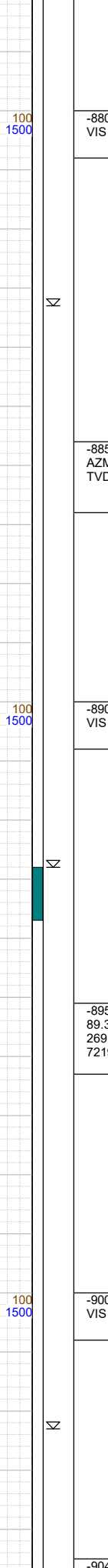
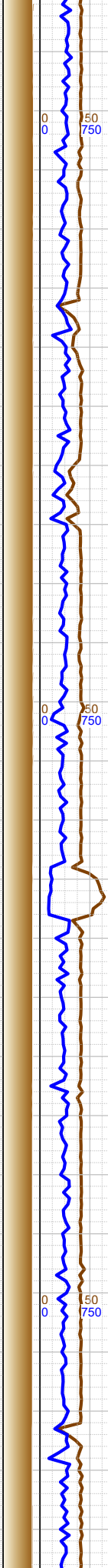
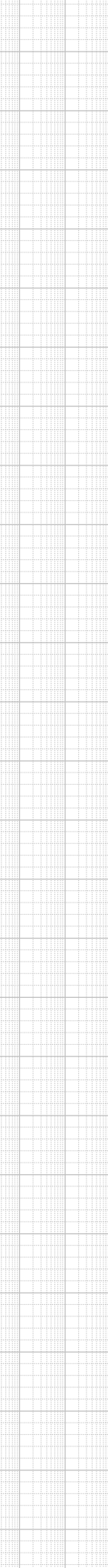
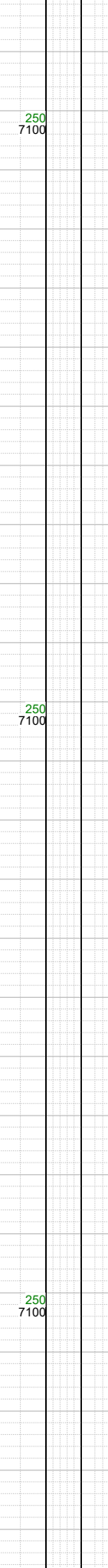
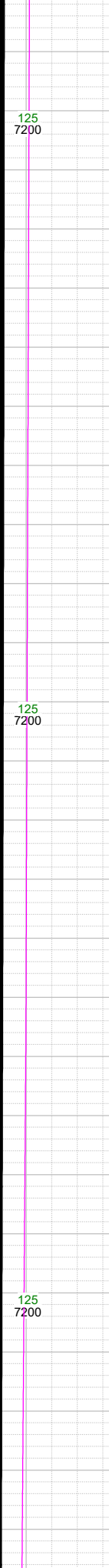
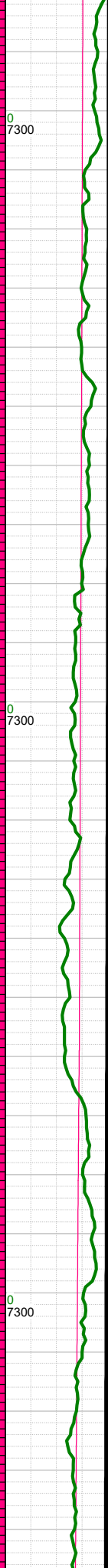
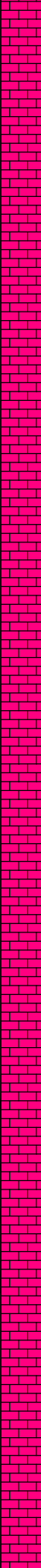


-8573 INC 91.69, AZM 271.77, TVD 7218.81
-8600 WT 9.2, VIS 51
-8668 INC 89.48, AZM 269.79, TVD 7217.84
-8700 WT 9.2, VIS 51
-8762 INC 89.62, AZM 269.66, TVD 7218.58



-8750 CHK: lt-med gy-brn,
sft-sbfrm, sbbkly, mot, v
calc, rthy lstr; MARL: dk
gy-blk, sbbkly-sbply, sft-
sbfrm, v calc, mod arg, sl
silty, tr pry, tr forams;

-8790
-8800
-8810
-8820
-8830
-8840
-8850
-8860
-8870
-8880
-8890
-8900
-8910
-8920
-8930
-8940
-8950
-8960
-8970
-8980
-8990
-9000
-9010
-9020
-9030
-9040



0
7300

125
7200

250
7100

0
0

50
750

100
1500

-8800 WT 9.2,
VIS 51

-8856 INC 89.7,
AZM 270.27,
TVD 7219.14

-8900 WT 9.2,
VIS 51

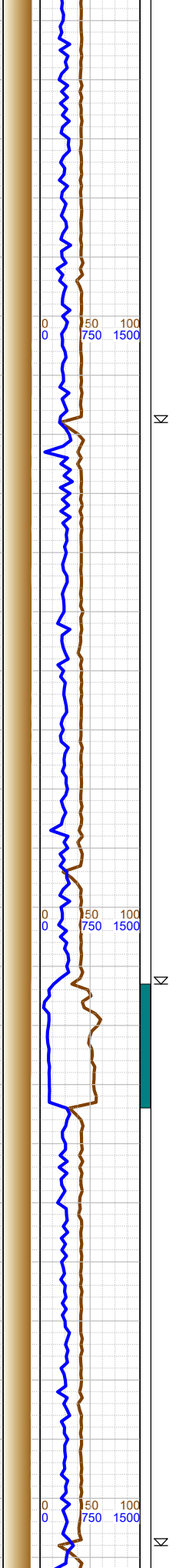
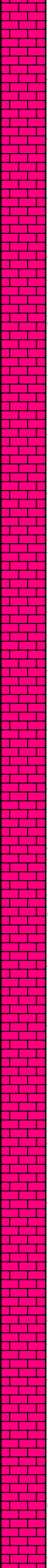
-8951 INC
89.31, AZM
269.88, TVD
7219.96

-9000 WT 9.2,
VIS 51

-9045 INC 89.4

-9000 CHK: lt-med gy-brn,
sft-sbfrm, sbbkly, mot, v
calc, rthy lstr; MARL: dk
gy-blk, sbbkly-sbplty, sft-
sbfrm, v calc, mod arg, sl
silty, tr pry;

-9050
-9060
-9070
-9080
-9090
-9100
-9110
-9120
-9130
-9140
-9150
-9160
-9170
-9180
-9190
-9200
-9210
-9220
-9230
-9240
-9250
-9260
-9270
-9280
-9290
-9300
-9310



AZM 270.27,
TVD 7221.02

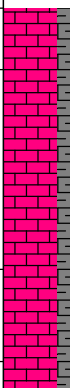
-9100 WT 9.2,
VIS 51

-9140 INC
89.31, AZM
270.98, TVD
7222.09

-9200 WT 9.2,
VIS 51

-9234 INC 89.4,
AZM 268.95,
TVD 7223.15

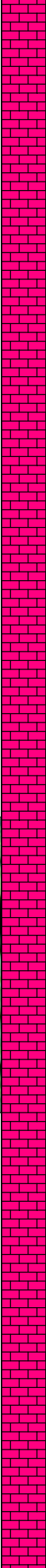
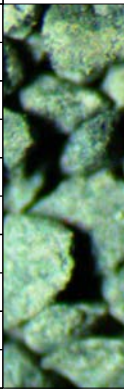
-9300 WT 9.2,
VIS 51



-9250 CHK: lt-med gy-brn,
sft-sbfrm, sbblky, mot, v
calc, rthy lstr; MARL: dk
gy-blk, sbblky-sbplty, sft-
sbfrm, v calc, mod arg, sl
silty, tr pry;



-9320
-9330
-9340
-9350
-9360
-9370
-9380
-9390
-9400
-9410
-9420
-9430
-9440
-9450
-9460
-9470
-9480
-9490
-9500
-9510
-9520
-9530
-9540
-9550
-9560
-9570



0
7300

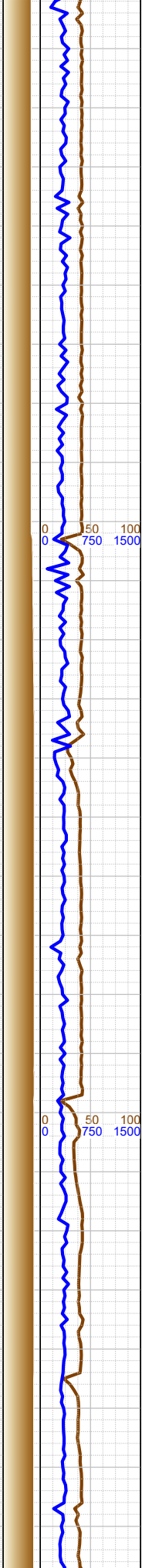
125
7200

250
7100

0
7300

125
7200

250
7100



0 50 100
0 750 1500

0 50 100
0 750 1500

-9329 INC
89.31, AZM
268.95, TVD
7224.22

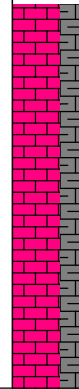
-9400 WT 9.2,
VIS 51

-9412 Fault: 5'
down-throw;
stayed in upper
B2 Chalk

-9424 INC
89.88, AZM
269.26, TVD
7224.89

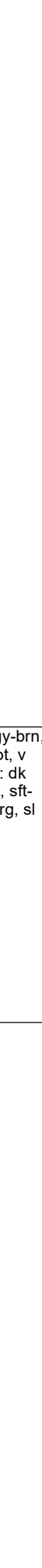
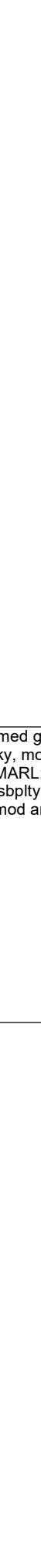
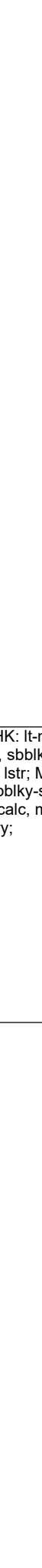
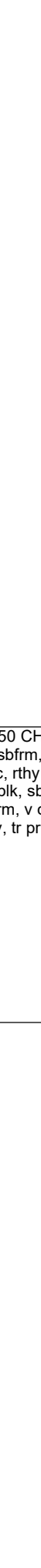
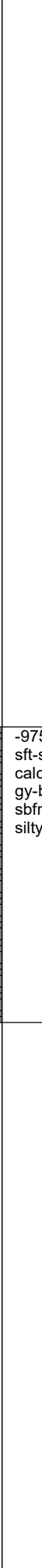
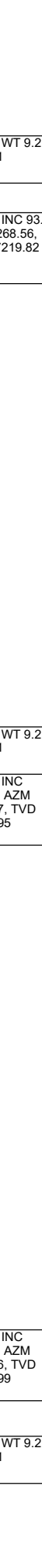
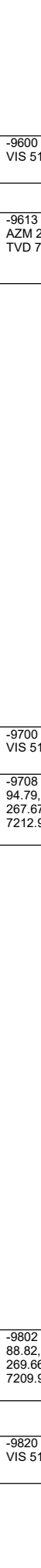
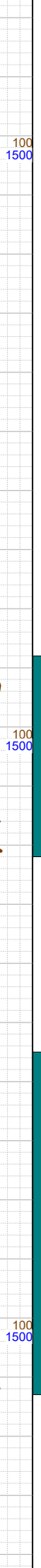
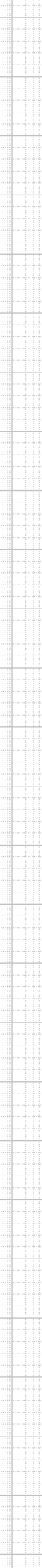
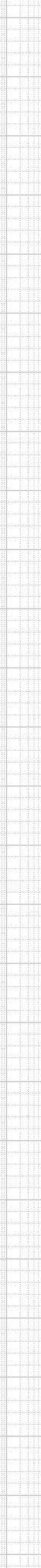
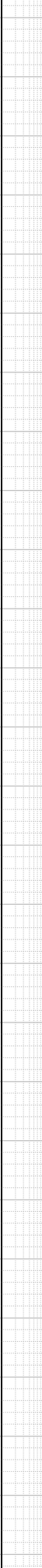
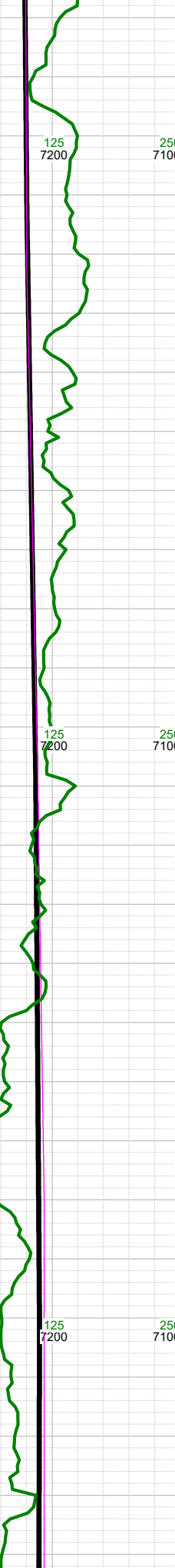
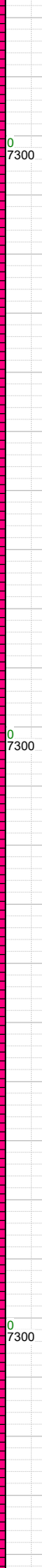
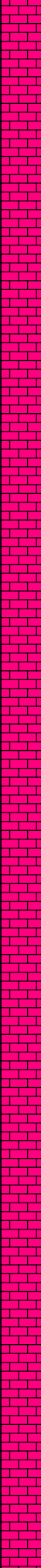
-9500 WT 9.2,
VIS 51

-9518 INC
91.38, AZM
269.08, TVD
7223.86



-9500 CHK: lt-med gy-brn,
sft-sbfrm, sbbkly, mot, v
calc, rthy lstr; MARL: dk
gy-blk, sbbkly-sbply, sft-
sbfrm, v calc, mod arg, sl
silty, tr pry;

-9580
-9590
-9600
-9610
-9620
-9630
-9640
-9650
-9660
-9670
-9680
-9690
-9700
-9710
-9720
-9730
-9740
-9750
-9760
-9770
-9780
-9790
-9800
-9810
-9820
-9830
-9840



0
7300

125
7200

250
7100

0
7300

125
7200

250
7100

0
7300

125
7200

250
7100

0
750

50
750

100
1500

0
750

50
750

100
1500

0
750

50
750

100
1500

-9600 WT 9.2,
VIS 51

-9613 INC 93.5,
AZM 268.56,
TVD 7219.82

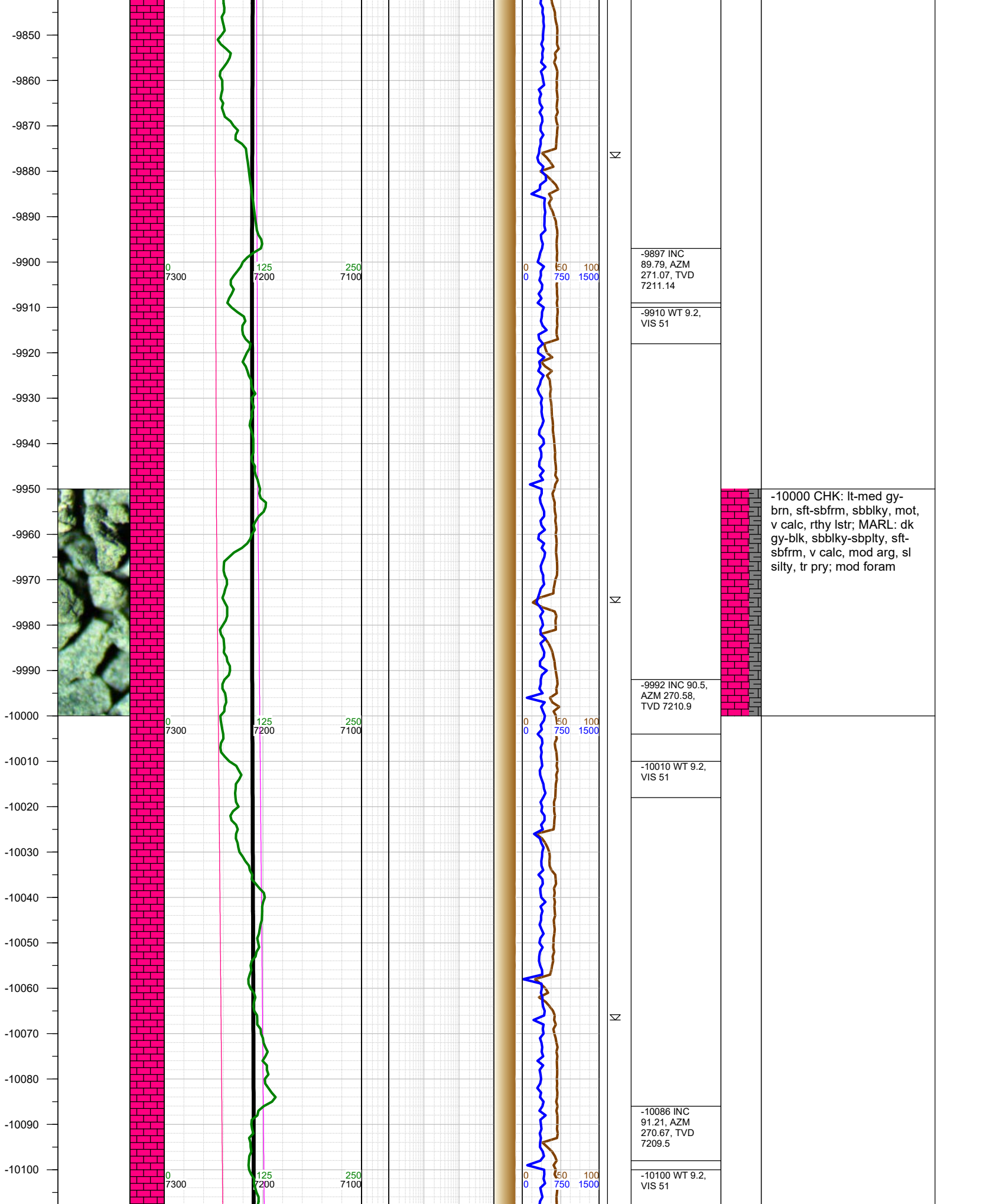
-9700 WT 9.2,
VIS 51

-9708 INC
94.79, AZM
267.67, TVD
7212.95

-9802 INC
88.82, AZM
269.66, TVD
7209.99

-9820 WT 9.2,
VIS 51

-9750 CHK: lt-med gy-brn,
sft-sbfrm, sbbkly, mot, v
calc, rthy lstr; MARL: dk
gy-blk, sbbkly-sbplty, sft-
sbfrm, v calc, mod arg, sl
silty, tr pry;



-9850
-9860
-9870
-9880
-9890
-9900
-9910
-9920
-9930
-9940
-9950
-9960
-9970
-9980
-9990
-10000
-10010
-10020
-10030
-10040
-10050
-10060
-10070
-10080
-10090
-10100

0 125 250
7300 7200 7100

0 125 250
7300 7200 7100

0 125 250
7300 7200 7100

0 50 100
0 750 1500

0 50 100
0 750 1500

0 50 100
0 750 1500

-9897 INC
89.79, AZM
271.07, TVD
7211.14

-9910 WT 9.2,
VIS 51

-9992 INC 90.5,
AZM 270.58,
TVD 7210.9

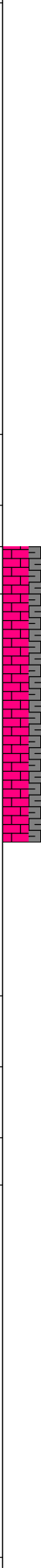
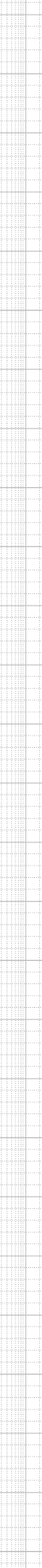
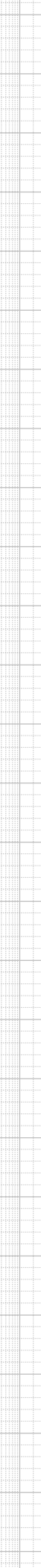
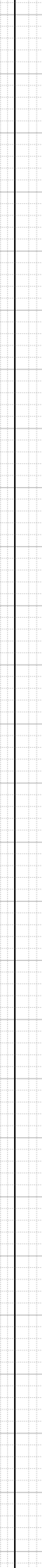
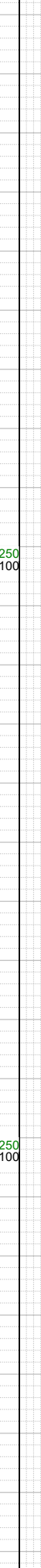
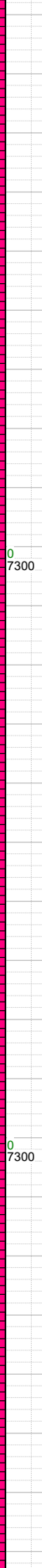
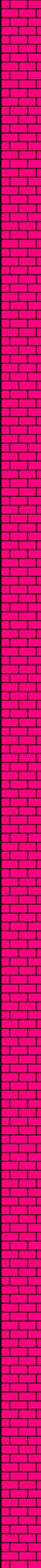
-10010 WT 9.2,
VIS 51

-10086 INC
91.21, AZM
270.67, TVD
7209.5

-10100 WT 9.2,
VIS 51

-10000 CHK: lt-med gy-brn, sft-sbfrm, sbbly, mot, v calc, rthy lstr; MARL: dk gy-blk, sbbly-sbply, sft-sbfrm, v calc, mod arg, sl silty, tr pry; mod foram

-10110
-10120
-10130
-10140
-10150
-10160
-10170
-10180
-10190
-10200
-10210
-10220
-10230
-10240
-10250
-10260
-10270
-10280
-10290
-10300
-10310
-10320
-10330
-10340
-10350
-10360
-10370



-10181 INC 89,
AZM 269.48,
TVD 7209.33

-10200 WT 9.2,
VIS 51

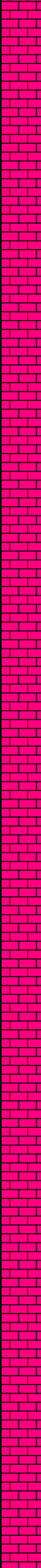
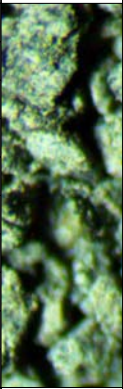
-10250 CHK: lt-med gy-
brn, sft-sbfrm, sbbly, mot,
v calc, rthy lstr; MARL: dk
gy-blk, sbbly-sbply, sft-
sbfrm, v calc, mod arg, sl
silty, tr pry; mod foram,
mod fos frag

-10276 INC
88.38, AZM
269.26, TVD
7211.5

-10300 WT 9.2,
VIS 51

-10371 INC

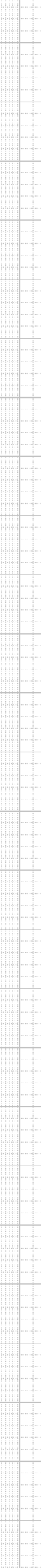
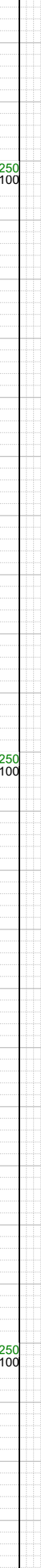
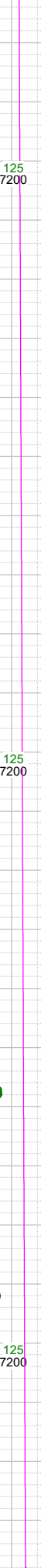
-10380
-10390
-10400
-10410
-10420
-10430
-10440
-10450
-10460
-10470
-10480
-10490
-10500
-10510
-10520
-10530
-10540
-10550
-10560
-10570
-10580
-10590
-10600
-10610
-10620
-10630



0 7300
0 7300
0 7300

125 7200
125 7200
125 7200

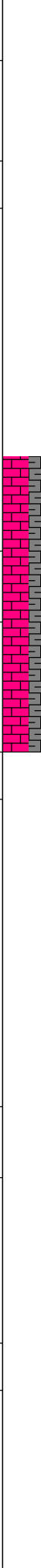
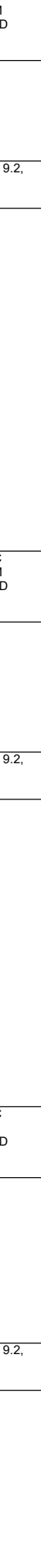
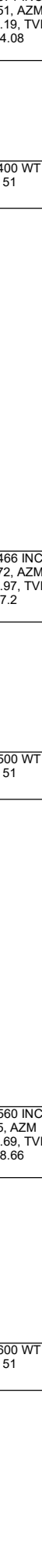
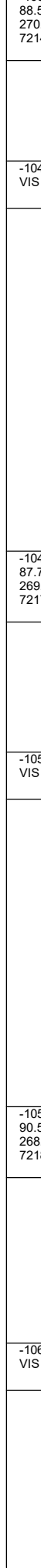
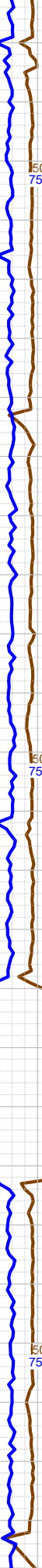
250 7100
250 7100
250 7100



0 0
0 0
0 0

50 750
50 750
50 750

100 1500
100 1500
100 1500



88.51, AZM
270.19, TVD
7214.08

-10400 WT 9.2,
VIS 51

-10466 INC
87.72, AZM
269.97, TVD
7217.2

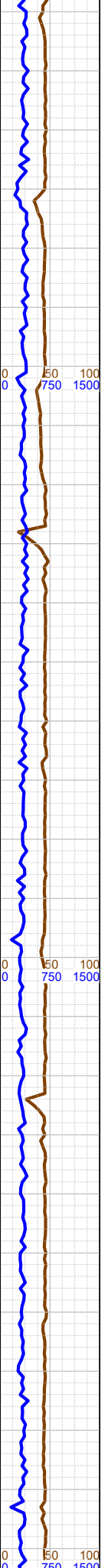
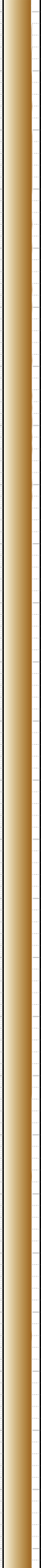
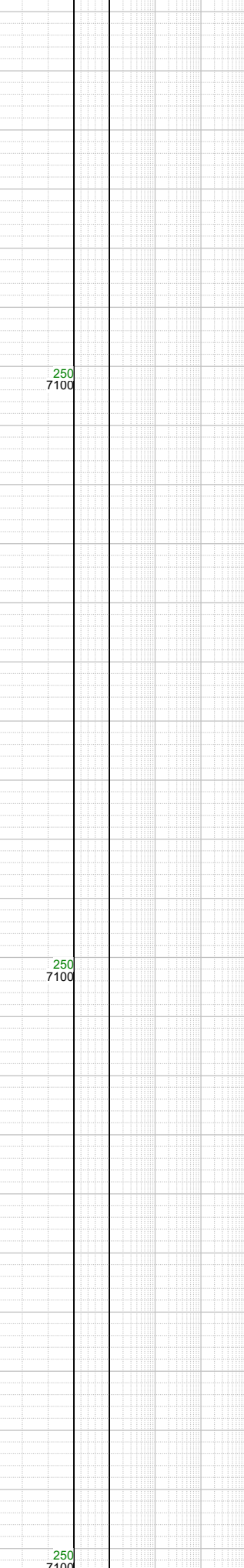
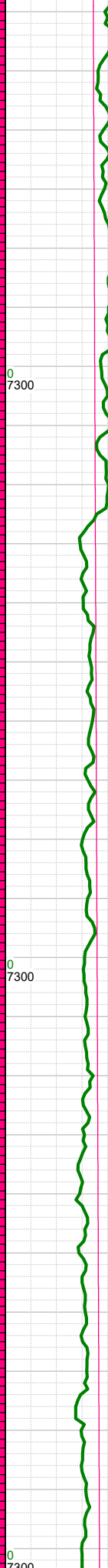
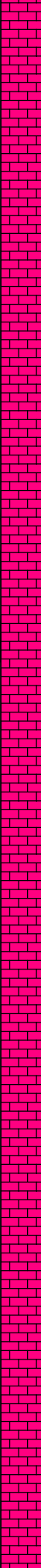
-10500 WT 9.2,
VIS 51

-10560 INC
90.5, AZM
268.69, TVD
7218.66

-10600 WT 9.2,
VIS 51

-10500 CHK: lt-med gy-
brn, sft-sbfrm, sbblky, mot,
v calc, rthy lstr; MARL: dk
gy-blk, sbblky-sbplty, sft-
sbfrm, v calc, mod arg, sl
silty, tr pry; mod foram,
mod fos frag

-10640
-10650
-10660
-10670
-10680
-10690
-10700
-10710
-10720
-10730
-10740
-10750
-10760
-10770
-10780
-10790
-10800
-10810
-10820
-10830
-10840
-10850
-10860
-10870
-10880
-10890
-10900



-10654 INC
90.9, AZM
270.36, TVD
7217.51

-10700 WT 9.2,
VIS 51

-10750 CHK: lt-med gy-
brn, sft-sbfrm, sbbkly, mot,
v calc, rthy lstr; MARL: dk
gy-blk, sbbkly-sbply, sft-
sbfrm, v calc, mod arg, sl
silty, tr pry; mod foram,
mod fos frag

-10749 INC
90.9, AZM
271.68, TVD
7216.02

-10800 WT 9.2,
VIS 51

-10844 INC
90.59, AZM
271.86, TVD
7214.78

-10900 WT 9.2,
VIS 51

0
7300

125
7200

250
7100

0
0

50
750

100
1500

0
7300

125
7200

250
7100

0
0

50
750

100
1500

0
7300

125
7200

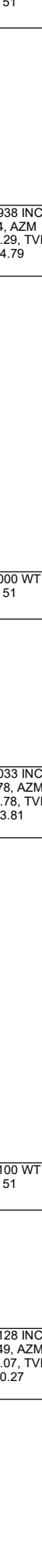
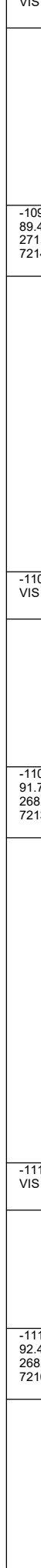
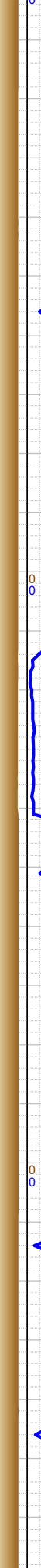
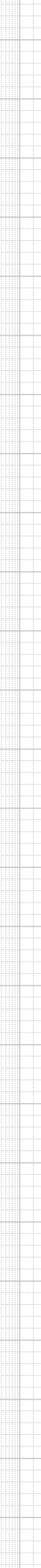
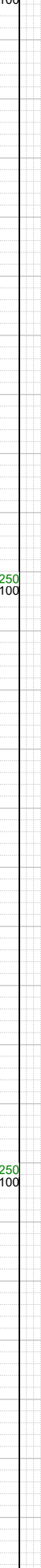
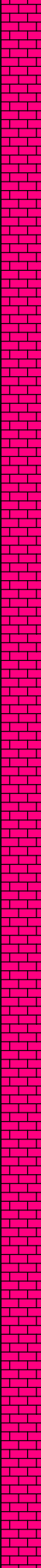
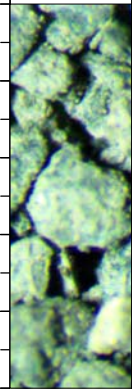
250
7100

0
0

50
750

100
1500

-10910
-10920
-10930
-10940
-10950
-10960
-10970
-10980
-10990
-11000
-11010
-11020
-11030
-11040
-11050
-11060
-11070
-11080
-11090
-11100
-11110
-11120
-11130
-11140
-11150
-11160



-10938 INC
89.4, AZM
271.29, TVD
7214.79

-11000 CHK: lt-med gy-brn, sft-sbfrm, sblky, mot, v calc, rthy lstr; MARL: dk gy-blk, sblky-sbply, sft-sbfrm, v calc, mod arg, sl silty, tr pry; mod foram, tr fos frag

-11000 WT 9.2,
VIS 51

-11033 INC
91.78, AZM
268.78, TVD
7213.81

-11100 WT 9.2,
VIS 51

-11128 INC
92.49, AZM
268.07, TVD
7210.27

0
7300

125
7200

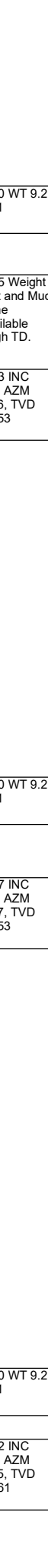
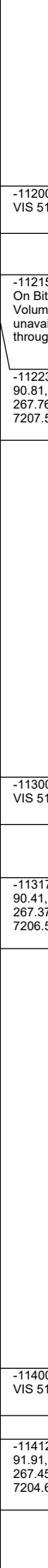
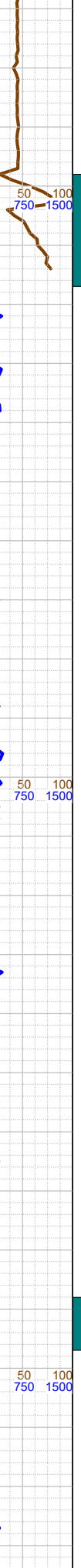
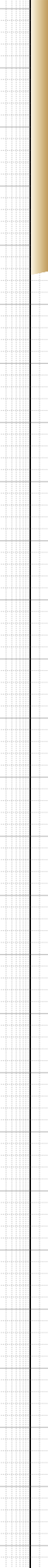
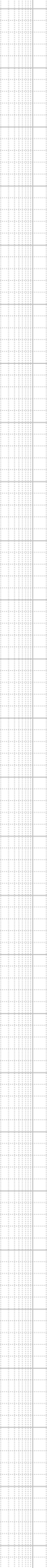
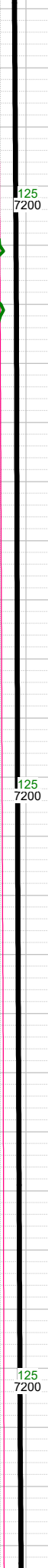
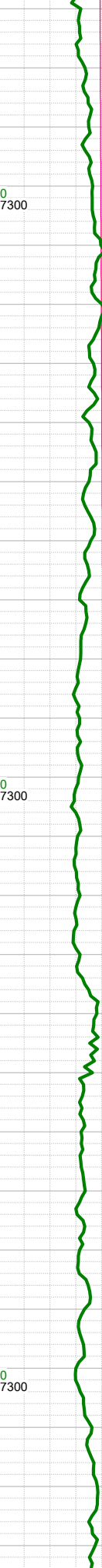
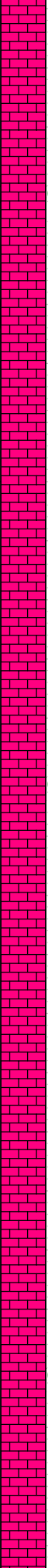
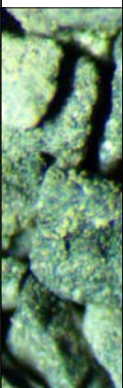
250
7100

0
0

50
750

100
1500

-11170
-11180
-11190
-11200
-11210
-11220
-11230
-11240
-11250
-11260
-11270
-11280
-11290
-11300
-11310
-11320
-11330
-11340
-11350
-11360
-11370
-11380
-11390
-11400
-11410
-11420
-11430



-11200 WT 9.2,
VIS 51

-11215 Weight
On Bit and Mud
Volume
unavailable
through TD.

-11223 INC
90.81, AZM
267.76, TVD
7207.53

-11300 WT 9.2,
VIS 51

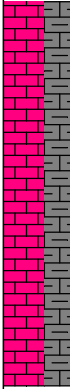
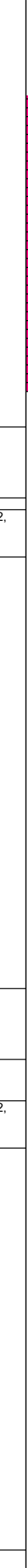
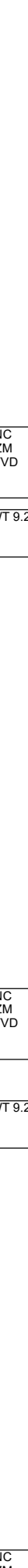
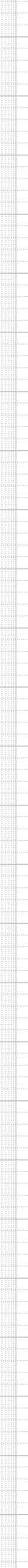
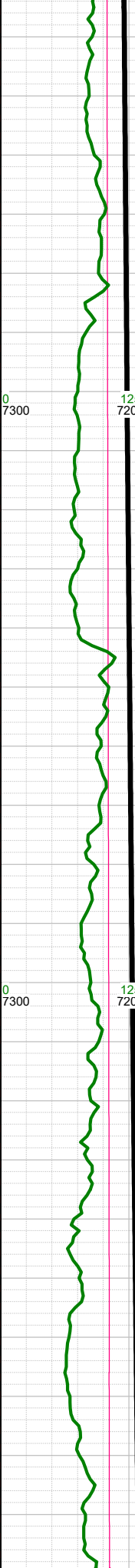
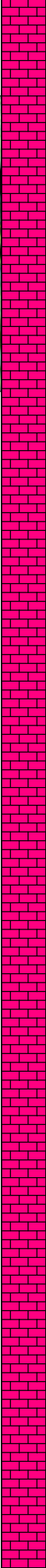
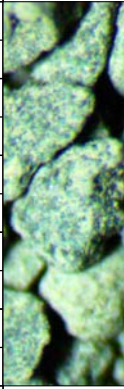
-11317 INC
90.41, AZM
267.37, TVD
7206.53

-11400 WT 9.2,
VIS 51

-11412 INC
91.91, AZM
267.45, TVD
7204.61

-11250 CHK: lt-med gy-
brn, sft-sbfrm, sbblky, mot,
v calc, rthy lstr; MARL: dk
gy-blk, sbblky-sbply, sft-
sbfrm, v calc, mod arg, sl
silty, tr pry; mod foram, tr
fos frag

-11440
-11450
-11460
-11470
-11480
-11490
-11500
-11510
-11520
-11530
-11540
-11550
-11560
-11570
-11580
-11590
-11600
-11610
-11620
-11630
-11640
-11650
-11660
-11670
-11680
-11690



-11500 CHK: lt-med gy-brn, sft-sbfrm, sbbkly, mot, v calc, rthy lstr; MARL: dk gy-blk, sbbkly-sbply, sft-sbfrm, v calc, mod arg, sl silty, tr pry; mod foram, tr fos frag

-11506 INC
92.09, AZM
267.19, TVD
7201.33

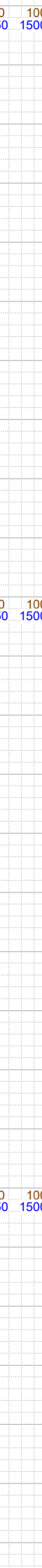
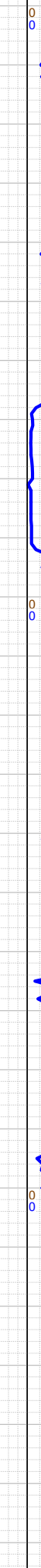
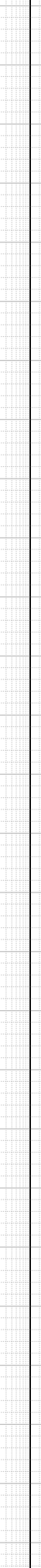
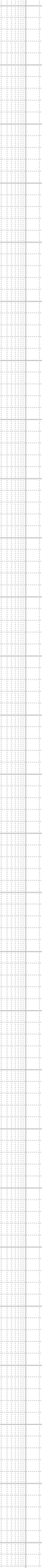
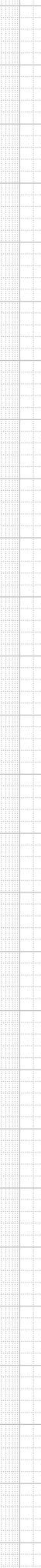
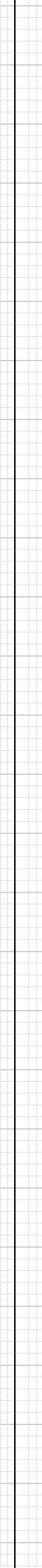
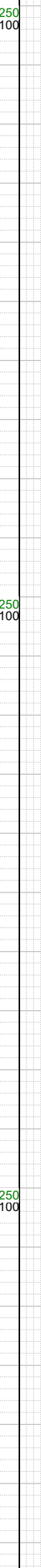
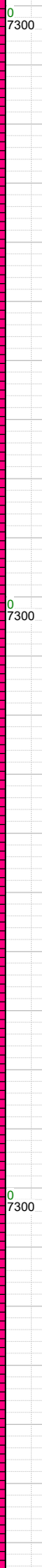
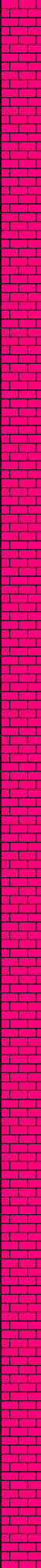
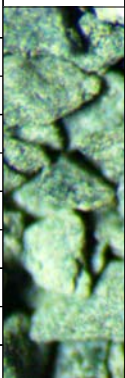
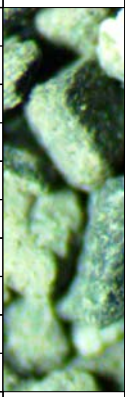
-11520 WT 9.2,
VIS 51

-11601 INC
92.62, AZM
266.66, TVD
7197.43

-11620 WT 9.2,
VIS 51

-11696 INC

-11700
-11710
-11720
-11730
-11740
-11750
-11760
-11770
-11780
-11790
-11800
-11810
-11820
-11830
-11840
-11850
-11860
-11870
-11880
-11890
-11900
-11910
-11920
-11930
-11940
-11950
-11960



93.02, AZM
268.95, TVD
7192.76

-11710 WT 9.2,
VIS 51

-11790 INC
89.48, AZM
269.57, TVD
7190.71

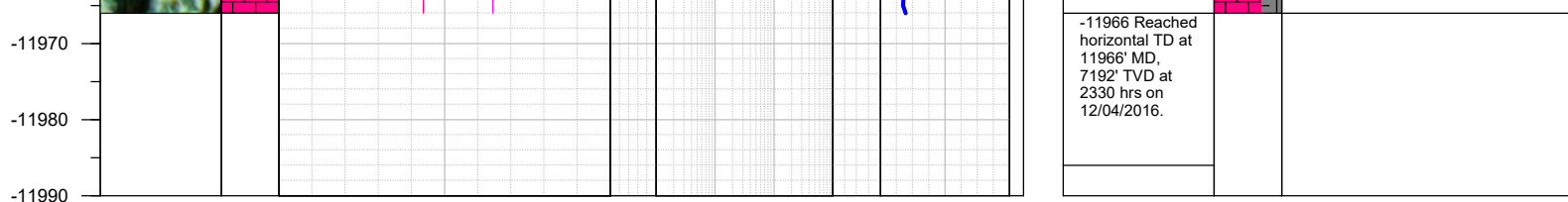
-11810 WT 9.2,
VIS 51

-11885 INC
89.31, AZM
269.57, TVD
7191.71

-11900 WT 9.1,
VIS 45

-11750 CHK: lt-med gy-
brn, sft-sbfrm, sbbkly, mot,
v calc, rthy lstr; MARL: dk
gy-blk, sbbkly-sbply, sft-
sbfrm, v calc, mod arg, sl
silty, tr pry; mod foram, tr
fos frag

-11966 CHK: lt-med gy-
brn, sft-sbfrm, sbbkly, mot,
v calc, rthy lstr; MARL: dk
gy-blk, sbbkly-sbply, sft-
sbfrm, v calc, mod arg, sl
silty, tr pry; mod foram, tr
fos frag



TOTAL DEPTH = 11966'

Thank you for using Earth Science Agency