



Project: WELD COUNTY, CO
Site: Hester Farms PAD
Well: Hester Farms F-36HN
Wellbore: Hester Farms F-36HN
Design: Hester Farms F-36HN
Latitude: 40° 32' 0.294 N
Longitude: 104° 49' 52.968 W
GL: 4915.00
KB: KB @ 4943.00ft (Cyclone 37)



WELLBORE TARGET DETAILS (LAT/LONG)

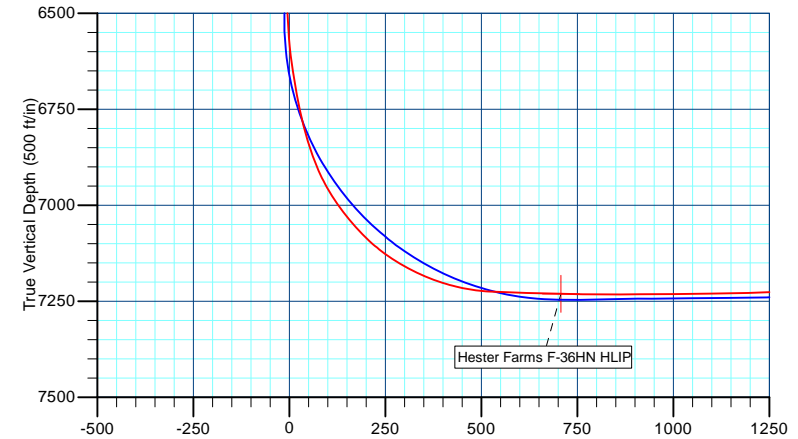
Name	TVD	+N/-S	+E/-W	Northing	Easting	Latitude	Longitude
PBHL Hester Farms F-36HN	7198.00	485.43	-4983.70	1438312.29	3180862.15	40° 32' 5.086 N	104° 50' 57.515 W

WELL DETAILS: Hester Farms F-36HN

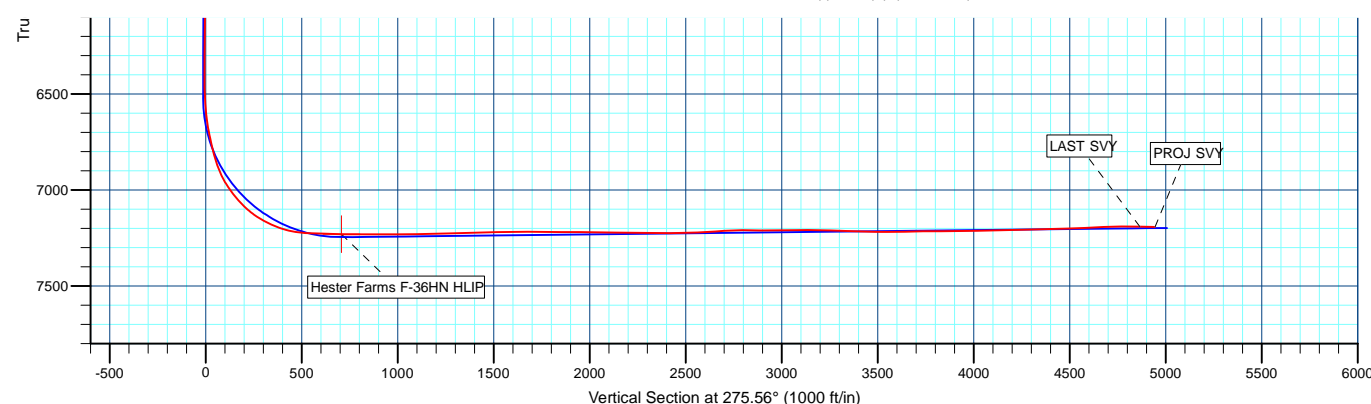
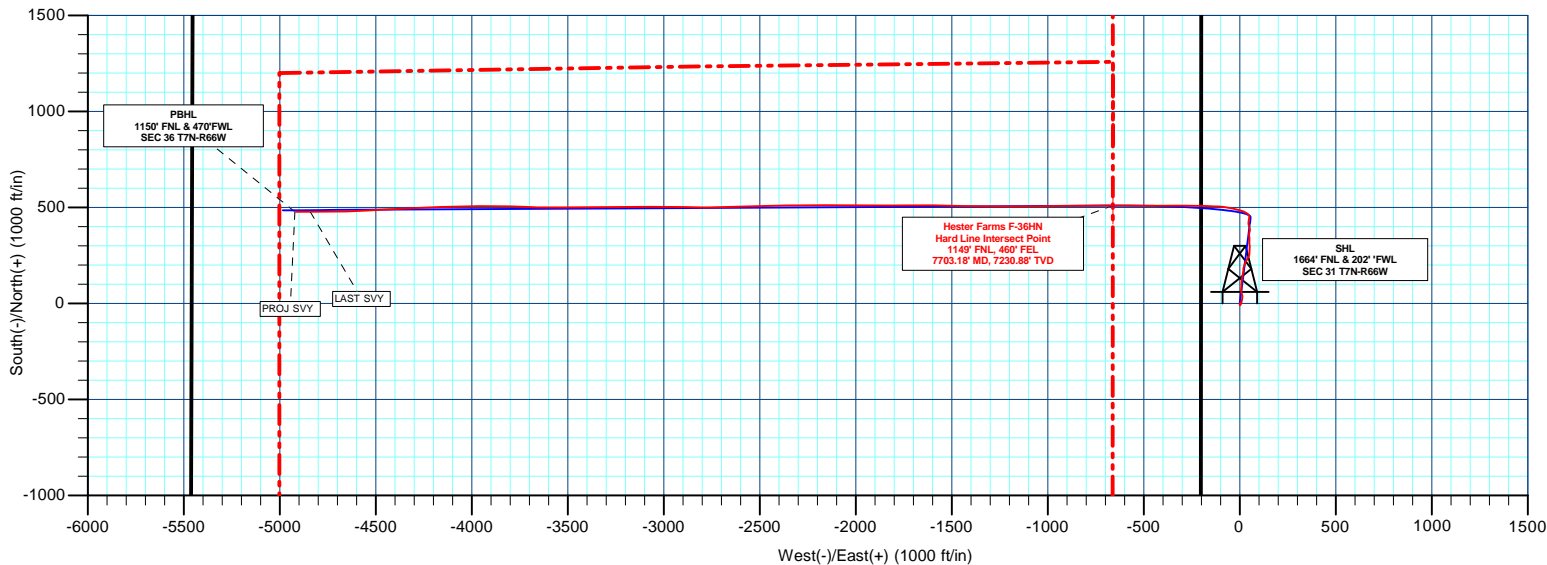
+N/-S	+E/-W	Northing	Ground Level:	Latitude	Longitude	Slot
0.00	0.00	1437864.45	4915.00 Easting 3185849.36	40° 32' 0.294 N	104° 49' 52.968 W	

SECTION DETAILS

MD	Inc	Azi	TVD	+N/-S	+E/-W	Dleg	TFace	Vsect	Annotation
17.00	0.00	0.00	17.00	0.00	0.00	0.00	0.00	0.00	
1217.00	0.00	0.00	1217.00	0.00	0.00	0.00	0.00	0.00	
1729.00	5.12	7.20	1728.32	22.68	2.87	1.00	7.20	-0.65	
6544.28	5.12	7.20	6524.39	449.02	56.72	0.00	0.00	-12.93	
7685.58	90.64	269.68	7246.00	509.76	-667.71	8.00	-97.44	713.99	
12001.91	90.64	269.68	7198.00	485.43	-4983.70	0.00	0.00	5007.29	



Vertical Section at 275.56° (500 ft/in)



Azimuths to True North
Magnetic North: 8.32°
Magnetic Field
Strength: 52524.6nT
Dip Angle: 66.97°
Date: 11/02/2016
Model: IGRF2015

PROJECT DETAILS: WELD COUNTY, CO

Geodetic System: US State Plane 1983
Datum: North American Datum 1983
Ellipsoid: GRS 1980
Zone: Colorado Northern Zone
System Datum: Mean Sea Level

Survey: Survey #1 (Hester Farms F-36HN/Hester Farms F-36HN)

Created By: TRACY WILLIAMS Date: 10:52, January 19 2017