



Project: WELD COUNTY, CO  
Site: Hester Farms PAD  
Well: Hester Farms C-36HN  
Wellbore: Hester Farms C-36HN  
Design: Hester Farms C-36HN  
Latitude: 40° 32' 0.737 N  
Longitude: 104° 49' 52.964 W  
GL: 4915.00  
KB: KB @ 4943.00ft (Cyclone 37)



#### WELLBORE TARGET DETAILS (LAT/LONG)

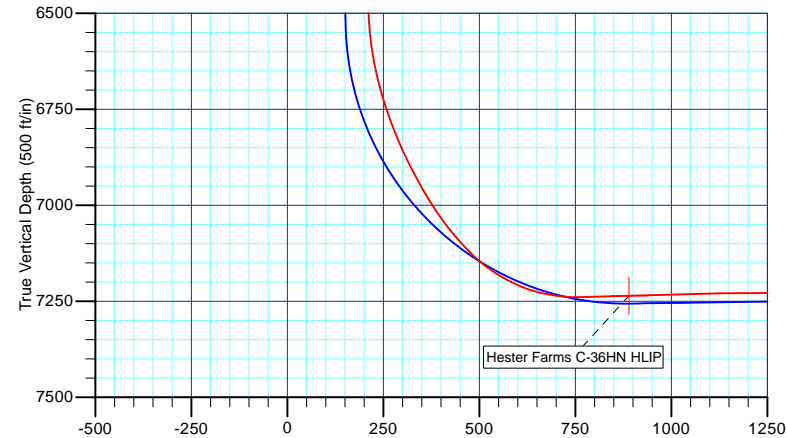
Name	TVD	+N/-S	+E/-W	Northing	Easting	Latitude	Longitude
PBHL Hester Farms C-36HN	7196.00	1100.82	-4976.80	1438972.53	3180864.35	40° 32' 11.610 N	104° 50' 57.424 W

#### WELL DETAILS: Hester Farms C-36HN

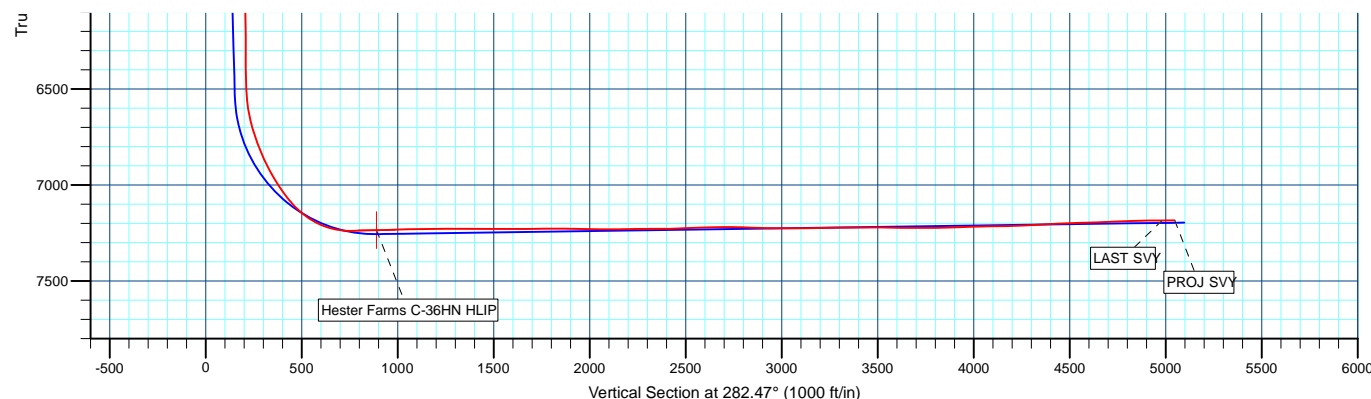
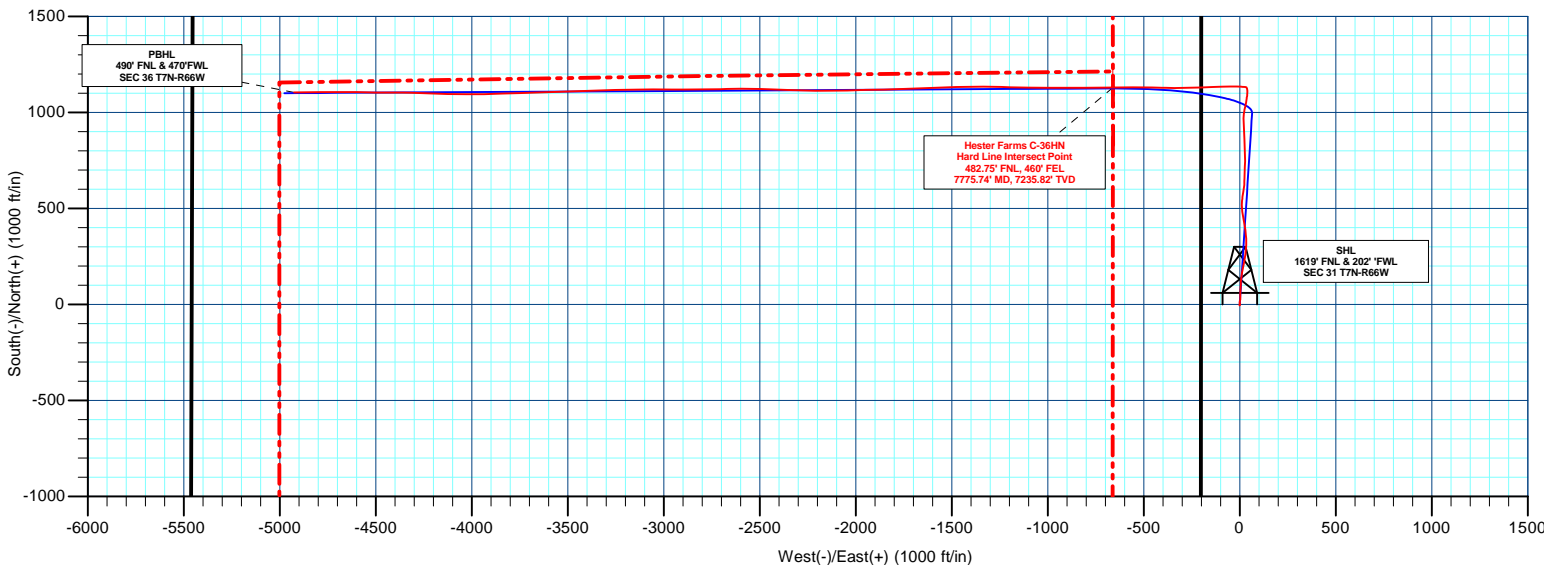
+N/-S	+E/-W	Northing	Ground Level:	Latitude	Longitude	Slot
0.00	0.00	1437909.27	4915.00 Easting 3185849.30	40° 32' 0.737 N	104° 49' 52.964 W	

#### SECTION DETAILS

MD	Inc	Azi	TVD	+N/-S	+E/-W	Dleg	TFace	VSeet	Annotation
17.00	0.00	0.00	17.00	0.00	0.00	0.00	0.00	0.00	
617.00	0.00	0.00	617.00	0.00	0.00	0.00	0.00	0.00	
1664.00	10.47	3.69	1658.18	95.20	6.14	1.00	3.69	14.57	
6631.64	10.47	3.69	6543.11	996.05	64.24	0.00	0.00	152.40	
7775.55	90.80	269.68	7256.00	1125.24	-662.44	8.00	-93.80	889.82	
12090.40	90.80	269.68	7196.00	1100.82	-4976.80	0.00	0.00	5097.09	



Vertical Section at 282.47° (500 ft/in)



#### PROJECT DETAILS: WELD COUNTY, CO

Geodetic System: US State Plane 1983  
Datum: North American Datum 1983  
Ellipsoid: GRS 1980  
Zone: Colorado Northern Zone  
System Datum: Mean Sea Level

Survey: Survey #1 (Hester Farms C-36HN/Hester Farms C-36HN)

Created By: TRACY WILLIAMS Date: 13:28, January 18 2017