

HALLIBURTON

iCem[®] Service

EXTRACTION OIL & GAS

United States of America

Date: Wednesday, November 09, 2016

Hester Farms A-36HN

Surface

Job Date: Tuesday, November 08, 2016

Sincerely,

Lauren Roberts

Legal Notice

Disclaimer:

All information in this report is provided subject to the terms and conditions which govern the services provided by Halliburton. Halliburton personnel use their best efforts in gathering information and their best judgment in interpreting it, but any interpretation, research, analysis or recommendation furnished by Halliburton are opinions based upon inferences from measurements and empirical relationships and assumptions, which inferences and empirical relationships and assumptions are not infallible, and with respect to which professionals in the industry may differ. Accordingly, HALLIBURTON IS UNABLE TO GUARANTEE THE ACCURACY OF ANY CHART INTERPRETATION, RESEARCH ANALYSIS, OR JOB RECOMMENDATION and any interpretation or recommendation is not for use of or reliance upon by any third party. The customer has full responsibility for any of its decisions which are based on the information provided in this report.

Table of Contents

1.0 Cementing Job Summary 4

 1.1 Executive Summary4

2.0 Real-Time Job Summary 7

 2.1 Job Event Log7

3.0 Attachments..... 9

 3.1 903648248 Extraction Hester Farms A-36HN Surface-Custom Results.png9

 3.2 903648248 Extraction Hester Farms A-36HN Surface-Custom Results (1).png.....10

1.0 Cementing Job Summary

1.1 Executive Summary

Halliburton appreciates the opportunity to perform the cementing services on the **Hester Farms A-36HN cement Surface** casing job. A pre-job safety meeting was held before the job where details of the job were discussed, potential safety hazards were reviewed, and environmental compliance procedures were outlined.

30 bbl. of cement returned to surface.

Halliburton maintains a continuous quality improvement process and appreciates any comments or suggestions that you may have. Halliburton again thanks you for the opportunity to perform service work on this well. We hope to be your solutions provider for future projects.

Respectfully,

Halliburton [Ft. Lupton]

The Road to Excellence Starts with Safety

Sold To #: 369404		Ship To #: 3684136		Quote #:		Sales Order #: 0903648248				
Customer: EXTRACTION OIL & GAS -				Customer Rep: Larry Siegel						
Well Name: HESTER FARMS			Well #: A-36HN			API/UWI #: 05-123-41993-00				
Field: WATTENBERG		City (SAP): EATON		County/Parish: WELD			State: COLORADO			
Legal Description: 31-7N-66W-1589FNL-202FWL										
Contractor:				Rig/Platform Name/Num: Spud Rig						
Job BOM: 7521										
Well Type: HORIZONTAL OIL										
Sales Person: HALAMERICA\HX38199				Srvc Supervisor: Nathaniel Moore						
Job										
Job depth MD		1588ft		Job Depth TVD						
Well Data										
Description	New / Used	Size in	ID in	Weight lbm/ft	Thread	Grade	Top MD ft	Bottom MD ft	Top TVD ft	Bottom TVD ft
Casing		9.625	8.921	36			0	1588	0	1588
Open Hole Section			13.5				0	1588	0	1588
Tools and Accessories										
Type	Size in	Qty	Make	Depth ft		Type	Size in	Qty	Make	
Float Shoe	9.625			1588		Bottom Plug	9.625		HES	
Fluid Data										
Stage/Plug #: 1										
Fluid #	Stage Type	Fluid Name	Qty	Qty UoM	Mixing Density lbm/gal	Yield ft3/sack	Mix Fluid Gal	Rate bbl/min	Total Mix Fluid Gal	
1	Fresh Water	Fresh Water	20	bbl	8.33					
Fluid #	Stage Type	Fluid Name	Qty	Qty UoM	Mixing Density lbm/gal	Yield ft3/sack	Mix Fluid Gal	Rate bbl/min	Total Mix Fluid Gal	
2	SwiftCem	SWIFTCEM (TM) SYSTEM	525	sack	13.5	1.74		5	9.2	
9.20 Gal		FRESH WATER								
Fluid #	Stage Type	Fluid Name	Qty	Qty UoM	Mixing Density lbm/gal	Yield ft3/sack	Mix Fluid Gal	Rate bbl/min	Total Mix Fluid Gal	
3	Fresh Water	Fresh Water	116	bbl	8.33					

Cement Left In Pipe	Amount	42 ft	Reason	Shoe Joint	

30 bbl cement to surface

2.0 Real-Time Job Summary

2.1 Job Event Log

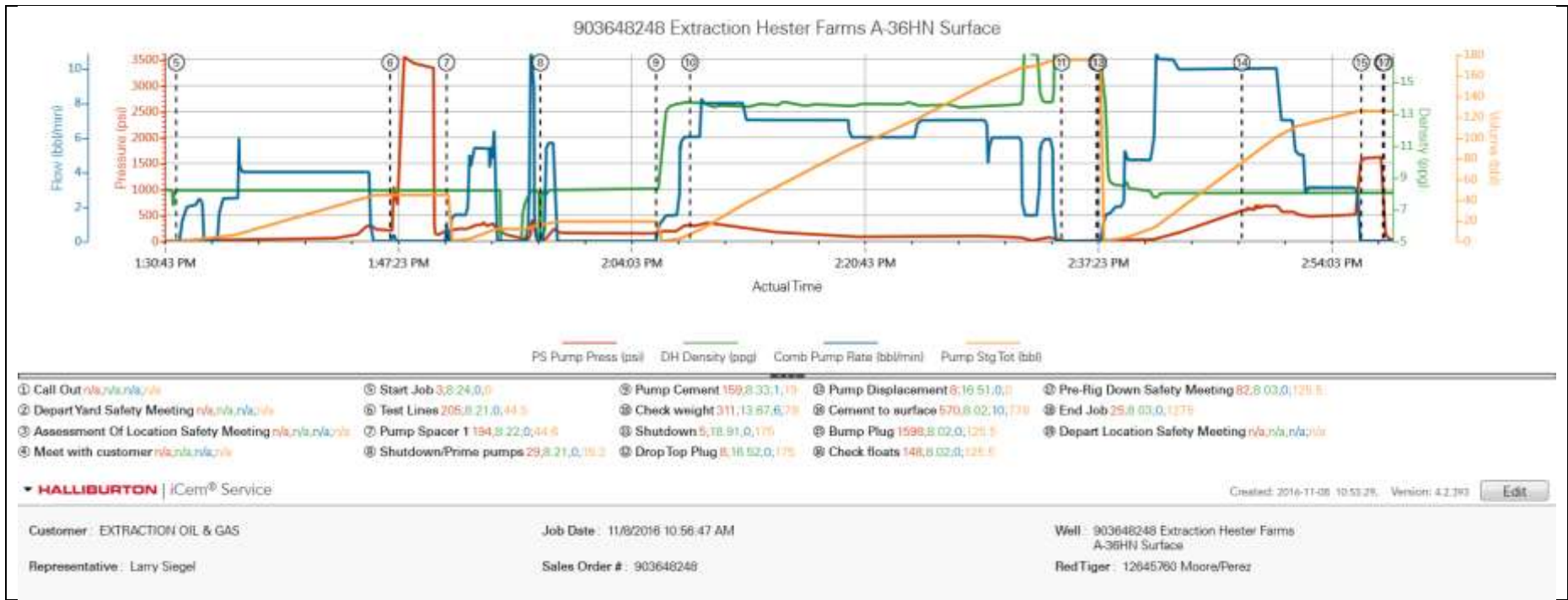
Type	Seq. No.	Activity	Graph Label	Date	Time	Source	Comments
Event	1	Call Out	Call Out	11/8/2016	06:30:00	USER	OL time 1130. Verify equipment and materials
Event	2	Depart Yard Safety Meeting	Depart Yard Safety Meeting	11/8/2016	09:00:00	USER	
Event	3	Assessment Of Location Safety Meeting	Assessment Of Location Safety Meeting	11/8/2016	10:30:00	USER	Spot in and rig up equipment
Event	4	Other	Meet with customer	11/8/2016	10:40:00	USER	TD 1588' 13.5" open hole. TP 1555' 9.625" 36# J-55. 42' shoe.
Event	5	Start Job	Start Job	11/8/2016	13:31:42	COM1	Fill lines. Pumped 40 bbl water to establish circulation
Event	6	Test Lines	Test Lines	11/8/2016	13:46:58	COM1	500 psi kick-out test. 3000 psi pressure test
Event	7	Pump Spacer 1	Pump Spacer 1	11/8/2016	13:51:00	COM1	10 bbl dye
Event	8	Other	Shutdown/Prime pumps	11/8/2016	13:57:42	COM1	Sucked air and had to re-prime pumps
Event	9	Pump Cement	Pump Cement	11/8/2016	14:05:58	COM1	525 sks/163 bbl 13.5 ppg 1.74 ft3/sk 9.2 gal/sk
Event	10	Check Weight	Check weight	11/8/2016	14:08:24	COM1	13.5 ppg verified with pressurized scales
Event	11	Shutdown	Shutdown	11/8/2016	14:34:56	COM1	Wash-up on top of plug
Event	12	Drop Top Plug	Drop Top Plug	11/8/2016	14:37:27	COM1	witnessed by company rep
Event	13	Pump Displacement	Pump Displacement	11/8/2016	14:37:34	COM1	117 bbl water displacement
Event	14	Other	Cement to surface	11/8/2016	14:47:49	COM1	75 bbl into displacement. 30 bbl cement back
Event	15	Bump Plug	Bump Plug	11/8/2016	14:56:21	COM1	490 psi final circulating pressure. Pressured up to 1500 psi for casing test
Event	16	Other	Check floats	11/8/2016	14:57:53	COM1	0.5 bbl back. Floats held
Event	17	Pre-Rig Down Safety Meeting	Pre-Rig Down Safety Meeting	11/8/2016	14:58:00	USER	
Event	18	End Job	End Job	11/8/2016	15:01:19	COM1	
Event	19	Depart Location Safety	Depart Location Safety	11/8/2016	16:00:00	USER	

Meeting

Meeting

3.0 Attachments

3.1 903648248 Extraction Hester Farms A-36HN Surface-Custom Results.png



3.2 903648248 Extraction Hester Farms A-36HN Surface-Custom Results (1).png

