



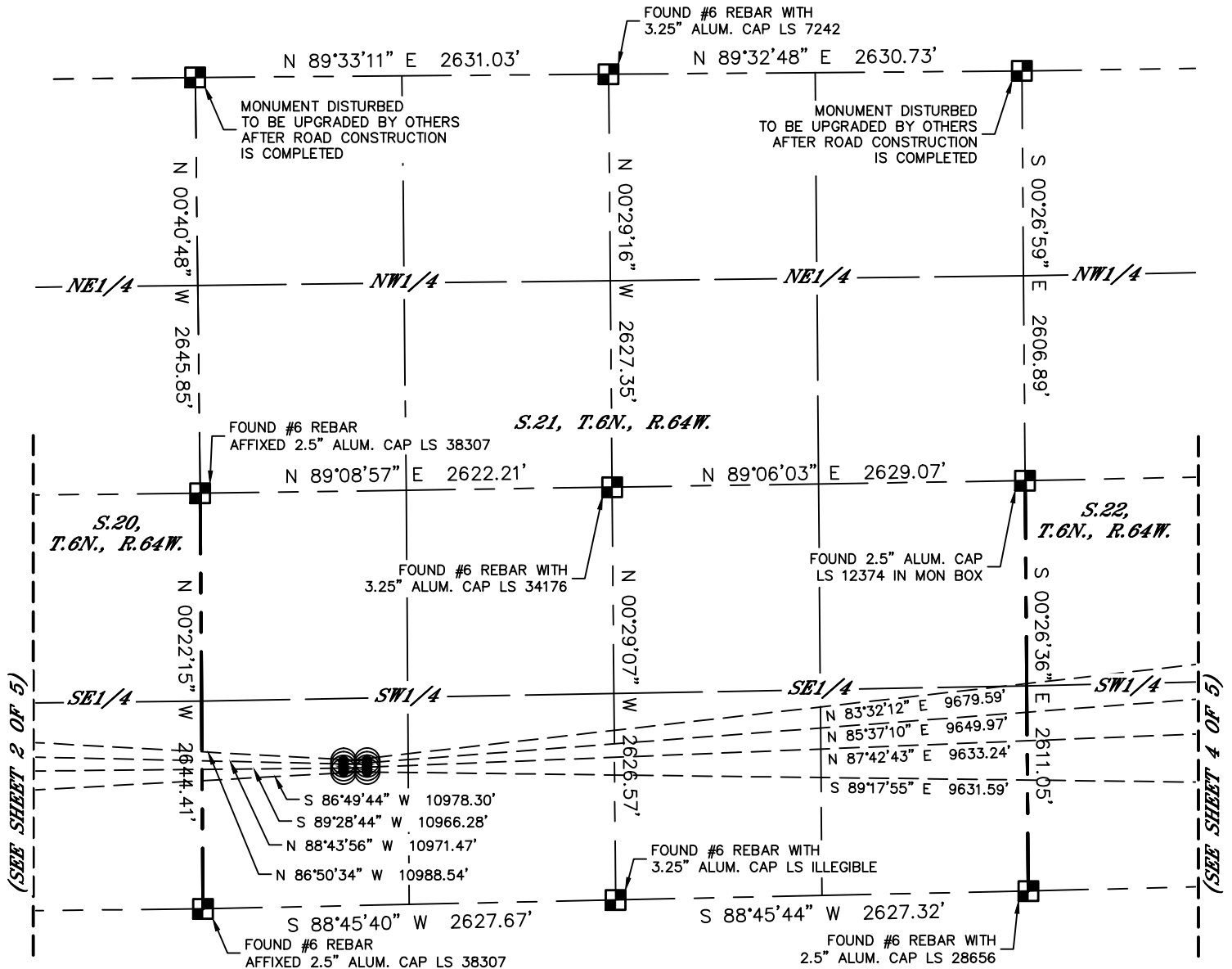
Lat40°, Inc. 6250 W. 10th Street, Unit 2, Greeley, CO 970-515-5294

# MULTI-WELL PLAN

A21-13 PAD

THIS MAP DOES NOT REPRESENT A BOUNDARY SURVEY

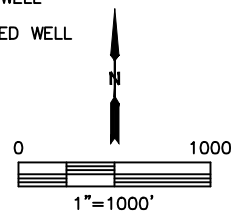
SECTION: 21  
TOWNSHIP: 6N  
RANGE: 64W  
6TH. P.M.  
WELD COUNTY, CO



## LEGEND

- = ALIQUOT MONUMENT AS DESCRIBED
- = CALCULATED POSITION
- = SURFACE HOLE LOCATION (SHL)
- ▲ = ENTRY POINT LOCATION (EP)
- <sub>BH</sub> = BOTTOM HOLE LOCATION (BHL)
- ⊙ = EXISTING WELL
- ⊙ = ABANDONED WELL

#	WELL NAME	BHL FOOTAGE				BHL LAT °	BHL LONG °	BHL S-T-R
1	KONA A19-636	1685	FSL	461	FWL	40.46875	-104.60023	19-6-64
2	KONA A19-630	1300	FSL	461	FWL	40.46769	-104.60023	19-6-64
3	KONA A19-624	935	FSL	461	FWL	40.46669	-104.60023	19-6-64
4	KONA A19-616	405	FSL	461	FWL	40.46524	-104.60024	19-6-64
5	HARPER A21-637	1785	FSL	1	FEL	40.46949	-104.52677	22-6-64
6	HARPER A21-631	1410	FSL	1	FEL	40.46846	-104.52677	22-6-64
7	HARPER A21-626	1035	FSL	1	FEL	40.46743	-104.52677	22-6-64
8	HARPER A21-618	510	FSL	1	FEL	40.46599	-104.52677	22-6-64





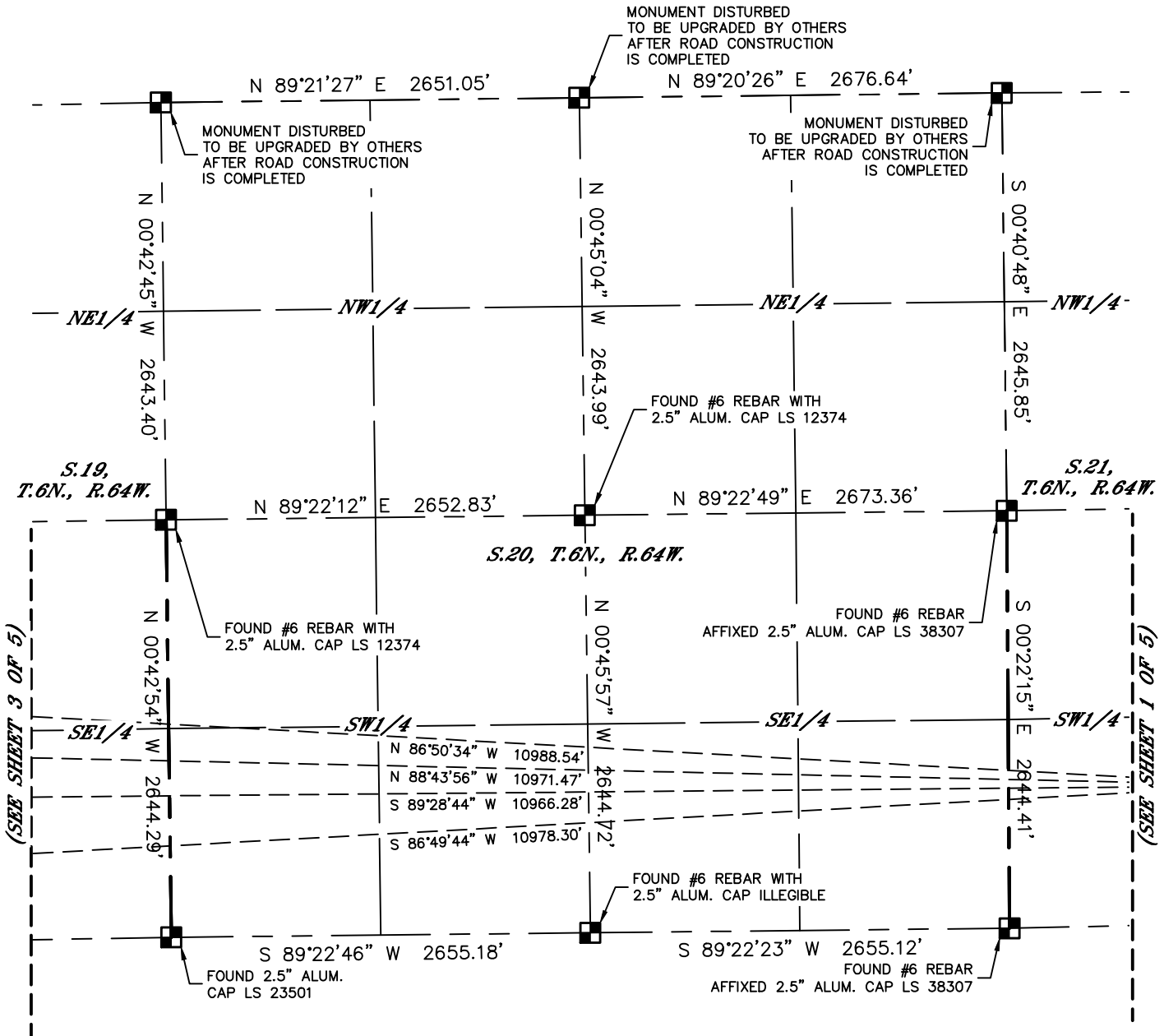
Lat40°, Inc. 6250 W. 10th Street, Unit 2, Greeley, CO 970-515-5294

# MULTI-WELL PLAN

A21-13 PAD

SECTION: 21  
TOWNSHIP: 6N  
RANGE: 64W  
6TH. P.M.  
WELD COUNTY, CO

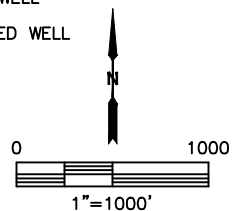
THIS MAP DOES NOT REPRESENT A BOUNDARY SURVEY



## LEGEND

- = ALIQUOT MONUMENT AS DESCRIBED
- = CALCULATED POSITION
- = SURFACE HOLE LOCATION (SHL)
- ▲ = ENTRY POINT LOCATION (EP)
- <sub>BH</sub> = BOTTOM HOLE LOCATION (BHL)
- ⊙ = EXISTING WELL
- ⊙ = ABANDONED WELL

#	WELL NAME	BHL FOOTAGE				BHL LAT °	BHL LONG °	BHL S-T-R
1	KONAA19-636	1685	FSL	461	FWL	40.46875	-104.60023	19-6-64
2	KONAA19-630	1300	FSL	461	FWL	40.46769	-104.60023	19-6-64
3	KONAA19-624	935	FSL	461	FWL	40.46669	-104.60023	19-6-64
4	KONAA19-616	405	FSL	461	FWL	40.46524	-104.60024	19-6-64
5	HARPER A21-637	1785	FSL	1	FEL	40.46949	-104.52677	22-6-64
6	HARPER A21-631	1410	FSL	1	FEL	40.46846	-104.52677	22-6-64
7	HARPER A21-626	1035	FSL	1	FEL	40.46743	-104.52677	22-6-64
8	HARPER A21-618	510	FSL	1	FEL	40.46599	-104.52677	22-6-64





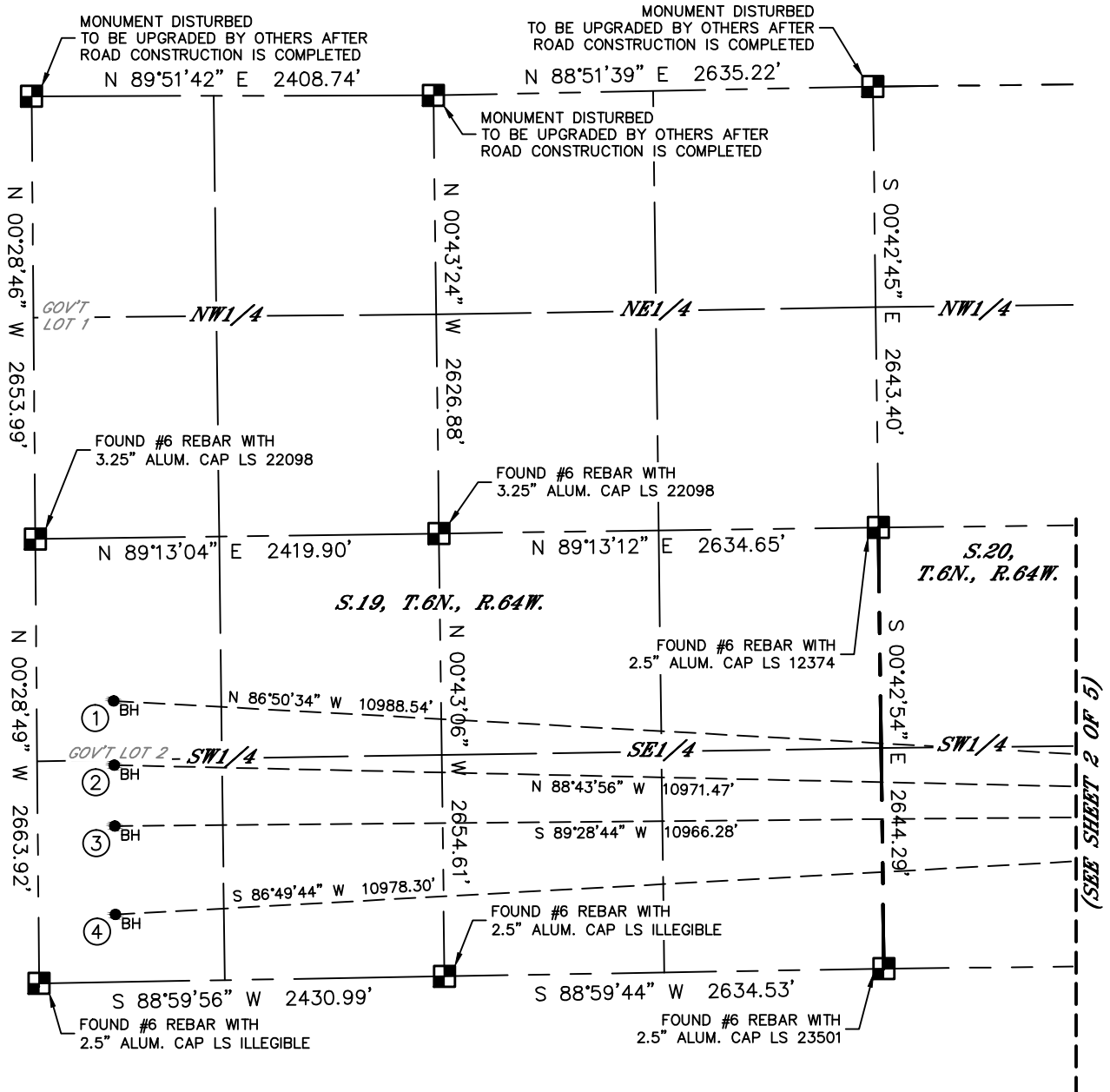
Lat40°, Inc. 6250 W. 10th Street, Unit 2, Greeley, CO 970-515-5294

# MULTI-WELL PLAN

A21-13 PAD

SECTION: 21  
TOWNSHIP: 6N  
RANGE: 64W  
6TH. P.M.  
WELD COUNTY, CO

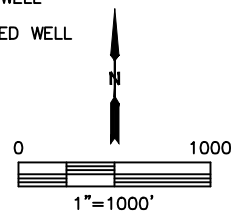
THIS MAP DOES NOT REPRESENT A BOUNDARY SURVEY



## LEGEND

- = ALIQUOT MONUMENT AS DESCRIBED
- = CALCULATED POSITION
- = SURFACE HOLE LOCATION (SHL)
- ▲ = ENTRY POINT LOCATION (EP)
- = BOTTOM HOLE LOCATION (BHL)
- ⊙ = EXISTING WELL
- ⊙ = ABANDONED WELL

#	WELL NAME	BHL FOOTAGE				BHL LAT°	BHL LONG°	BHL S-T-R
1	KONAA19-636	1685	FSL	461	FWL	40.46875	-104.60023	19-6-64
2	KONAA19-630	1300	FSL	461	FWL	40.46769	-104.60023	19-6-64
3	KONAA19-624	935	FSL	461	FWL	40.46669	-104.60023	19-6-64
4	KONAA19-616	405	FSL	461	FWL	40.46524	-104.60024	19-6-64
5	HARPER A21-637	1785	FSL	1	FEL	40.46949	-104.52677	22-6-64
6	HARPER A21-631	1410	FSL	1	FEL	40.46846	-104.52677	22-6-64
7	HARPER A21-626	1035	FSL	1	FEL	40.46743	-104.52677	22-6-64
8	HARPER A21-618	510	FSL	1	FEL	40.46599	-104.52677	22-6-64

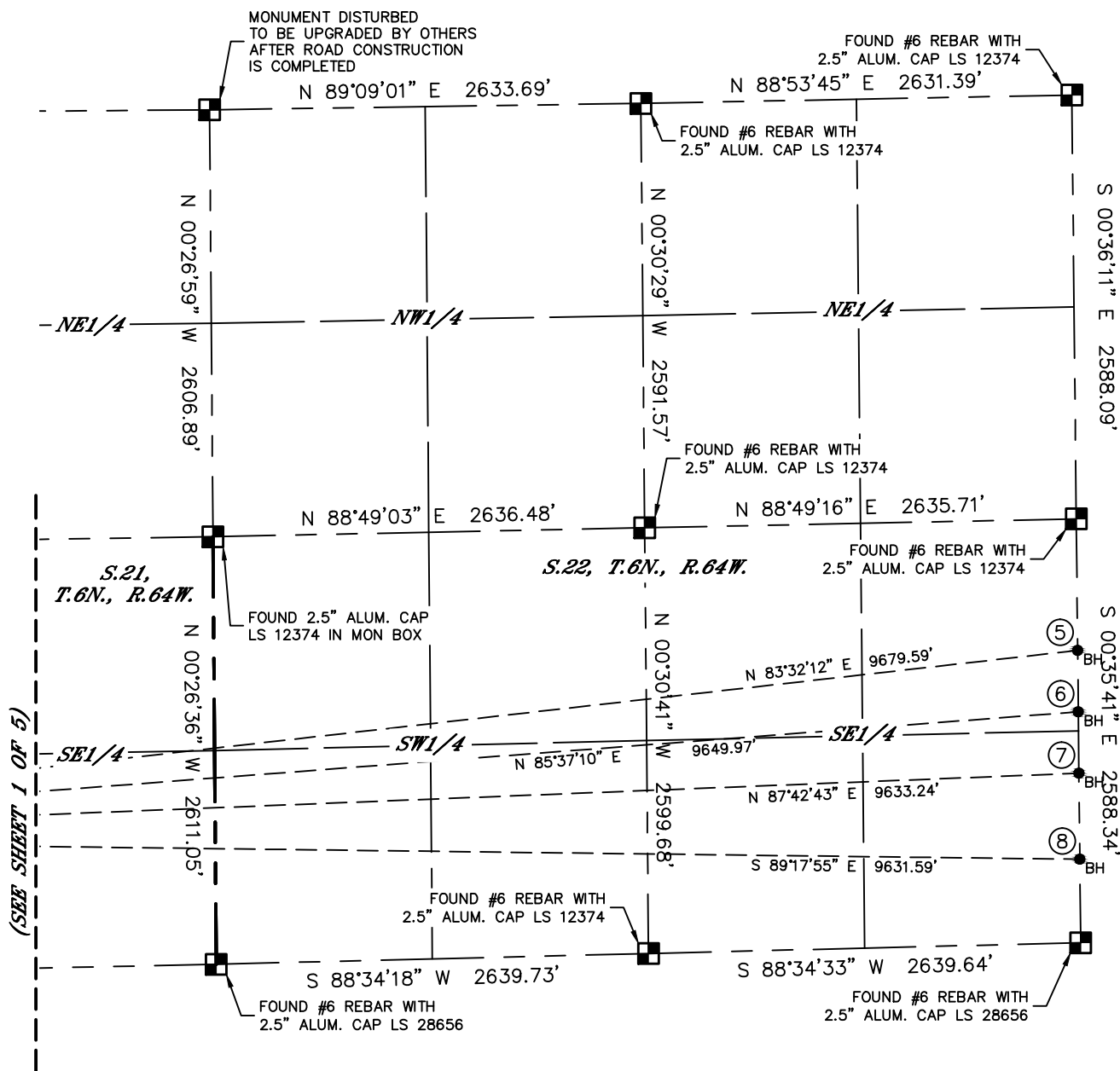


## MULTI-WELL PLAN

A21-13 PAD








SECTION: 21  
TOWNSHIP: 6N  
RANGE: 64W  
6TH. P.M.  
WELD COUNTY, CO

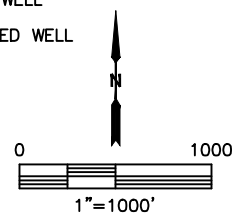
THIS MAP DOES NOT REPRESENT A BOUNDARY SURVEY



#	WELL NAME	BHL FOOTAGE				BHL LAT °	BHL LONG °	BHL S-T-R
1	KONA A19-636	1685	FSL	461	FWL	40.46875	-104.60023	19-6-64
2	KONA A19-630	1300	FSL	461	FWL	40.46769	-104.60023	19-6-64
3	KONA A19-624	935	FSL	461	FWL	40.46669	-104.60023	19-6-64
4	KONA A19-616	405	FSL	461	FWL	40.46524	-104.60024	19-6-64
5	HARPER A21-637	1785	FSL	1	FEL	40.46949	-104.52677	22-6-64
6	HARPER A21-631	1410	FSL	1	FEL	40.46846	-104.52677	22-6-64
7	HARPER A21-626	1035	FSL	1	FEL	40.46743	-104.52677	22-6-64
8	HARPER A21-618	510	FSL	1	FEL	40.46599	-104.52677	22-6-64

### LEGEND

-  = ALIQUOT MONUMENT AS DESCRIBED  
 = CALCULATED POSITION  
 = SURFACE HOLE LOCATION (SHL)  
 = ENTRY POINT LOCATION (EP)  
 = BOTTOM HOLE LOCATION (BHL)  
 = EXISTING WELL  
 = ABANDONED WELL





Lat40°, Inc. 6250 W. 10th Street, Unit 2, Greeley, CO 970-515-5294

# MULTI-WELL PLAN

A21-13 PAD

SECTION: 21  
TOWNSHIP: 6N  
RANGE: 64W  
6TH. P.M.  
WELD COUNTY, CO

