

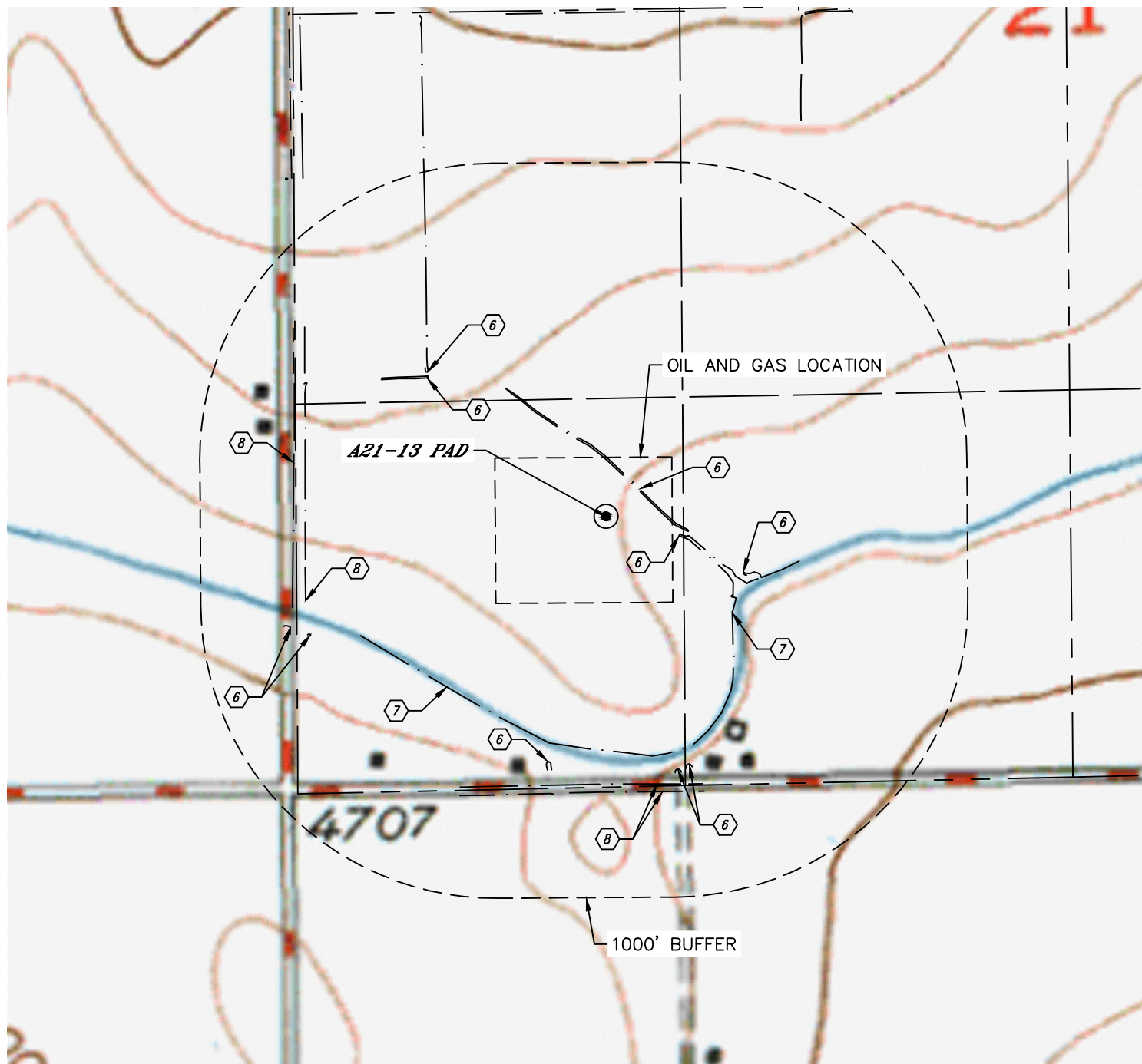


Lat40°, Inc. 6250 W. 10th Street, Unit 2, Greeley, CO 970-515-5294

HYDROLOGY MAP

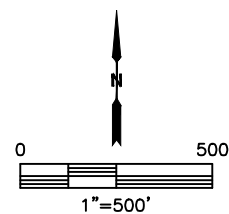
A21-13 PAD

SECTION: 21
TOWNSHIP: 6N
RANGE: 64W
6TH. P.M.
WELD COUNTY, CO



DISTANCES MEASURED FROM THE EDGE OF THE OIL AND GAS LOCATION.

- ⑥ DITCH (1) INSIDE LOCATION, 22' & 240' E, 355', 370' NW, 537' & 562' S, 552' SE, 637' & 701' SW
- ⑦ GREELEY NO. 2 DITCH 208' SE, 328' SW
- ⑧ BORROW DITCH 616' & 642' S, 644' & 681' S



DATE: 12/1/2016
PROJECT#: 2016057