

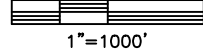
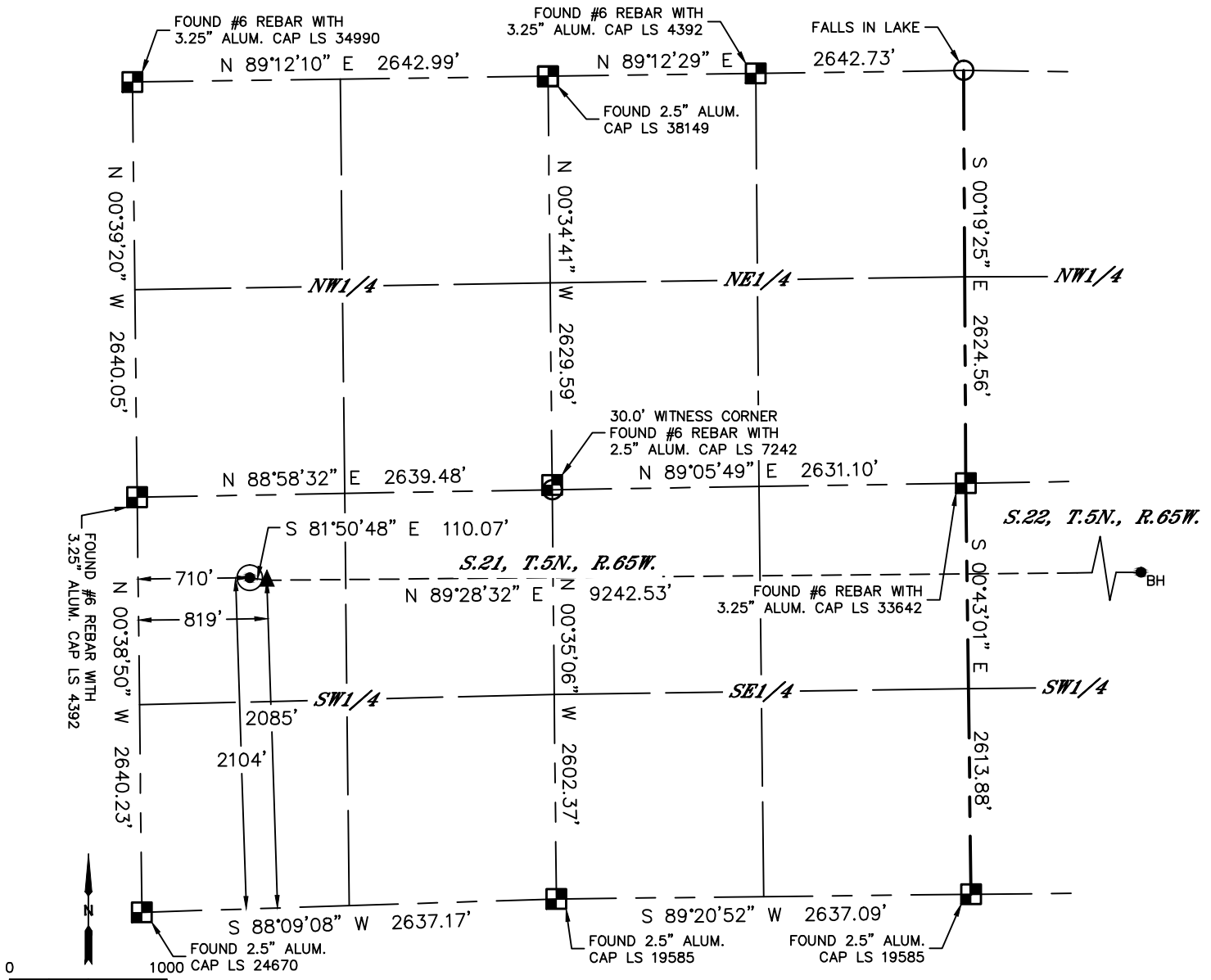


Lat40°, Inc. 6250 W. 10th Street, Unit 2, Greeley, CO 970-515-5294

# WELL LOCATION CERTIFICATE

## ELBERT 8N

SECTION: 21  
TOWNSHIP: 5N  
RANGE: 65W  
6TH. P.M.  
WELD COUNTY, CO



- LEGEND**
- = ALIQUOT MONUMENT AS DESCRIBED
  - = CALCULATED POSITION
  - = SURFACE HOLE LOCATION (SHL)
  - ▲ = ENTRY POINT LOCATION (EP)
  - BH = BOTTOM HOLE LOCATION (BHL)
  - ⊙ = EXISTING WELL
  - ⊙ = ABANDONED WELL

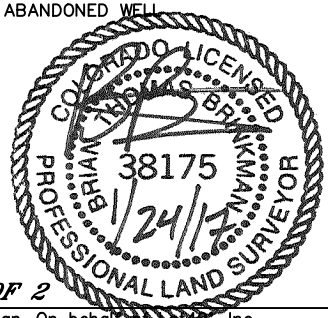
CLIENT: PDC ENERGY, INC.				LANDMAN: JEFF HINDMARSH					
INSTRUMENT OPERATOR: SCOTT SHERARD				SURVEY DATE: 1/13/2017		SURFACE USE: PASTURE			
SHL FOOTAGE	SHL LAT °	SHL LONG °	SHL PDOP	SHL ELEV (FT.)	SHL 1/4/1/4	SHL S-T-R			
2104	FSL	710	FWL	40.38317	-104.67525	1.6	4638	NWSW	21-5-65

BHL FOOTAGE	BHL LAT °	BHL LONG °	BHL S-T-R	EP LAT °	EP LONG °	EP S-T-R			
2045	FSL	500	FEL	40.38312	-104.64170	22-5-65	40.38313	-104.67486	21-5-65

NEAREST CULTURAL ITEMS	
BUILDING	±605' SW
BUILDING UNIT	±713' SW
HIGH OCCUPANCY BUILDING UNIT	±4565' NW
DESIGNATED OUTSIDE ACTIVITY AREA	5280'+
PUBLIC ROAD (1ST AVENUE)	±698' W
ABOVE GROUND UTILITY	±527' N
RAILROAD	3273' NW
PROPERTY LINE	±525' N

**NOTE:**

- Bearings shown are Grid Bearings of the Colorado State Plane Coordinate System, North Zone, North American Datum 1983. The lineal dimensions as contained herein are based upon the "U.S. Survey Foot."
- Distances to section lines measured at 90 degrees from said section lines.
- Ground elevations are based on an observed GPS elevation (NAVD 1988 DATUM).
- Latitude and Longitude shown are (NAD 83 DATUM).
- IMPROVEMENTS: See LOCATION DRAWING for all visible improvements within 500' of oil and gas location.
- This map does not represent a boundary survey.

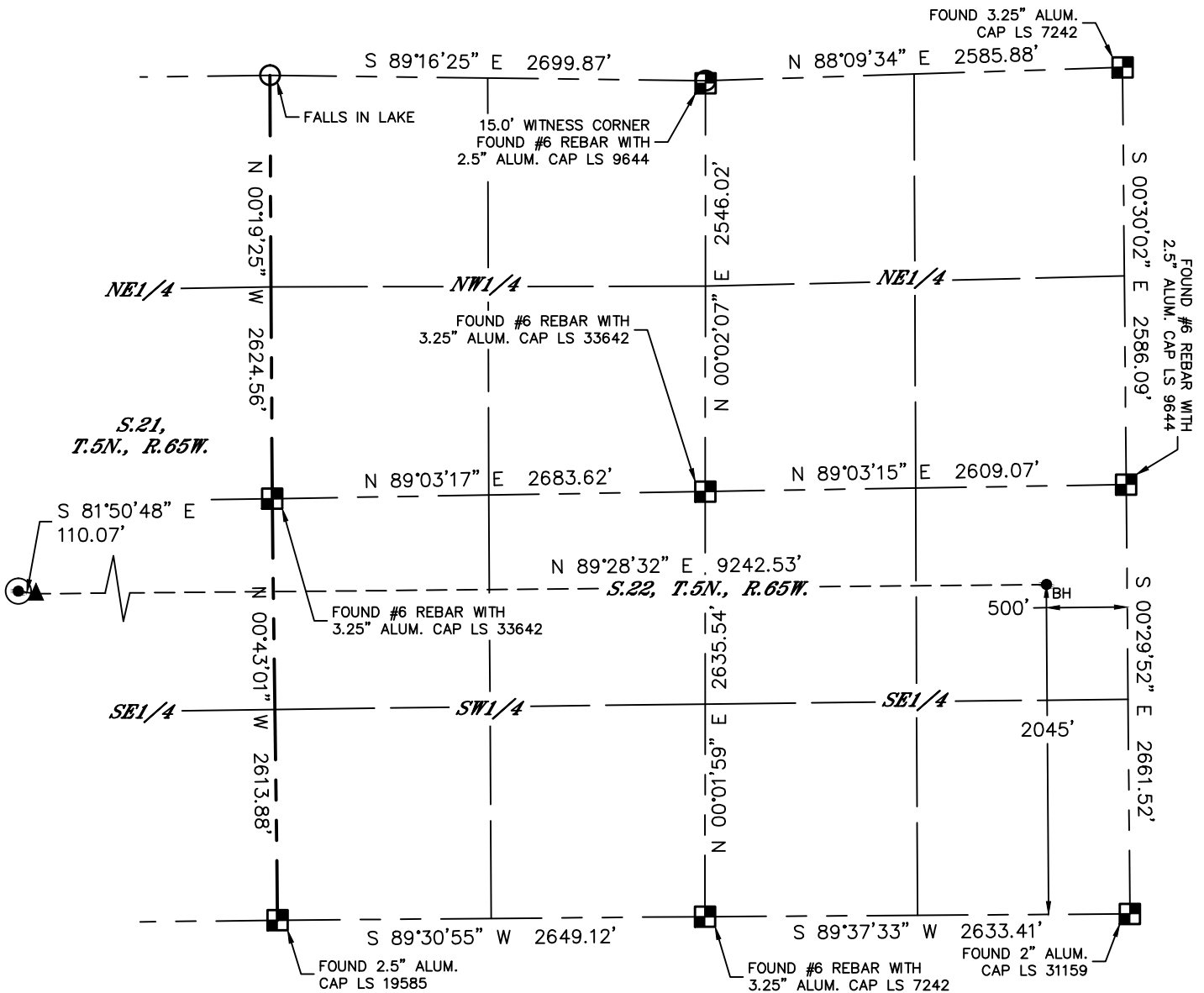




# WELL LOCATION CERTIFICATE

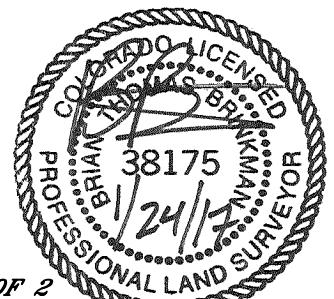
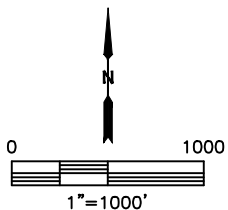
**ELBERT 8N**

SECTION: 21  
TOWNSHIP: 5N  
RANGE: 65W  
6TH. P.M.  
WELD COUNTY, CO



### LEGEND

- = ALIQUOT MONUMENT AS DESCRIBED
- = CALCULATED POSITION
- = SURFACE HOLE LOCATION (SHL)
- = ENTRY POINT LOCATION (EP)
- = BOTTOM HOLE LOCATION (BHL)
- = EXISTING WELL
- = ABANDONED WELL



**SHEET 2 OF 2**

Brian T. Brinkman—On behalf of Lat40°, Inc.  
 Colorado Licensed Professional Land Surveyor No. 38175  
 DATE: 1/23/2017  
 PROJECT#: 2016085