

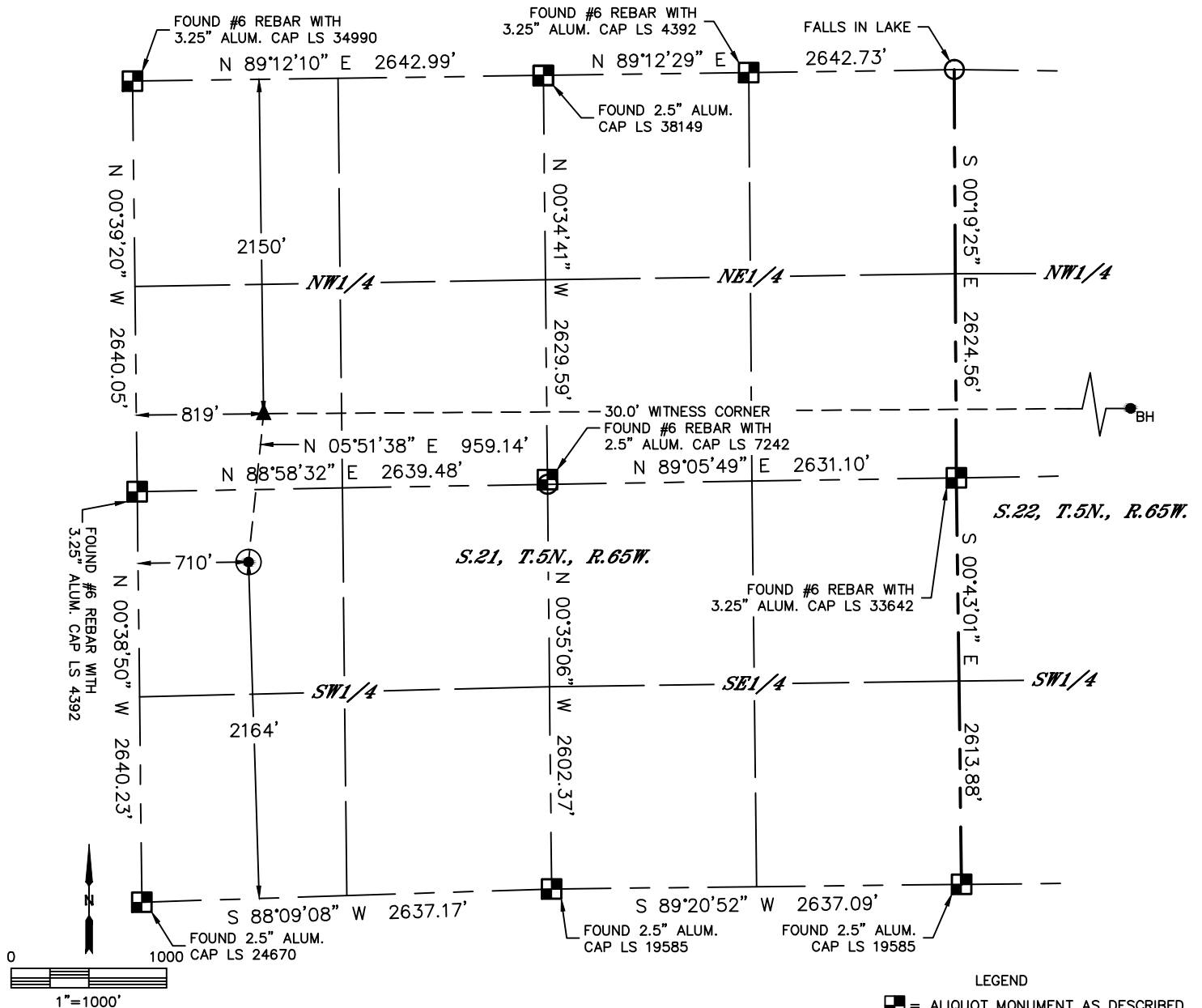


Lat40°, Inc. 6250 W. 10th Street, Unit 2, Greeley, CO 970-515-5294

# WELL LOCATION CERTIFICATE

ELBERT 4N

SECTION: 21  
TOWNSHIP: 5N  
RANGE: 65W  
6TH. P.M.  
WELD COUNTY, CO



CLIENT: PDC ENERGY, INC.						LANDMAN: JEFF HINDMARSH			
INSTRUMENT OPERATOR: SCOTT SHERARD						SURVEY DATE: 1/13/2017		SURFACE USE: PASTURE	
SHL FOOTAGE				SHL LAT °	SHL LONG °	SHL PDOP	SHL ELEV (FT.)	SHL 1/4/1/4	SHL S-T-R
2164	FSL	710	FWL	40.38334	-104.67526	1.6	4638	NWSW	21-5-65

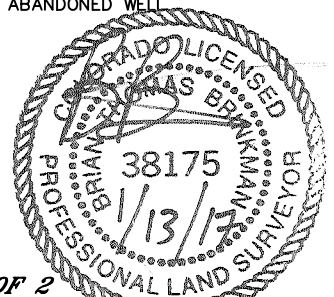
BHL FOOTAGE				BHL LAT °	BHL LONG °	BHL S-T-R	EP LAT °	EP LONG °	EP S-T-R
2200	FNL	0	FEL	40.38586	-104.63990	22-5-65	40.38595	-104.67487	21-5-65

## NOTE:

- 1) Bearings shown are Grid Bearings of the Colorado State Plane Coordinate System, North Zone, North American Datum 1983. The lineal dimensions as contained herein are based upon the "U.S. Survey Foot."
- 2) Distances to section lines measured at 90 degrees from said section lines.
- 3) Ground elevations are based on an observed GPS elevation (NAVD 1988 DATUM).
- 4) Latitude and Longitude shown are (NAD 83 DATUM).
- 5) IMPROVEMENTS: See LOCATION DRAWING for all visible improvements within 500' of oil and gas location.
- 6) This map does not represent a boundary survey.

NEAREST CULTURAL ITEMS	
BUILDING	±638' SW
BUILDING UNIT	±748' SW
HIGH OCCUPANCY BUILDING UNIT	4520' NW
DESIGNATED OUTSIDE ACTIVITY AREA	5280'+
PUBLIC ROAD (1ST AVENUE)	±698' W
ABOVE GROUND UTILITY	467' N
RAILROAD	±3248' NW
PROPERTY LINE	±465' N

- LEGEND
- = ALIQUOT MONUMENT AS DESCRIBED
  - = CALCULATED POSITION
  - = SURFACE HOLE LOCATION (SHL)
  - ▲ = ENTRY POINT LOCATION (EP)
  - BH = BOTTOM HOLE LOCATION (BHL)
  - ⊕ = EXISTING WELL
  - ⊙ = ABANDONED WELL



SHEET 1 OF 2

Brian T. Brinkman—On behalf of Lat40°, Inc.  
Colorado Licensed Professional Land Surveyor No. 38175  
DATE: 1/13/2017  
PROJECT#: 2016085

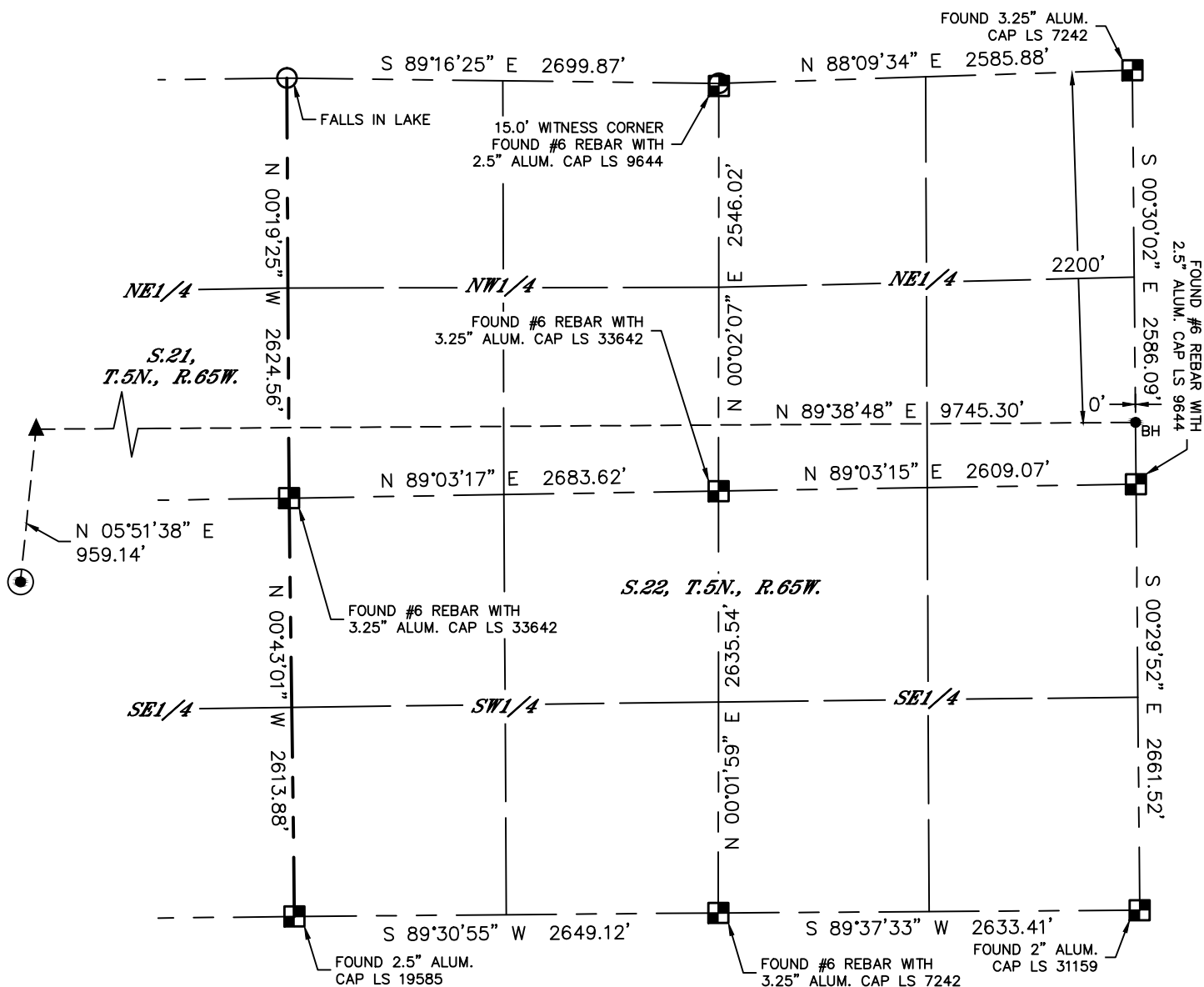


Lat40°, Inc. 6250 W. 10th Street, Unit 2, Greeley, CO 970-515-5294

# WELL LOCATION CERTIFICATE

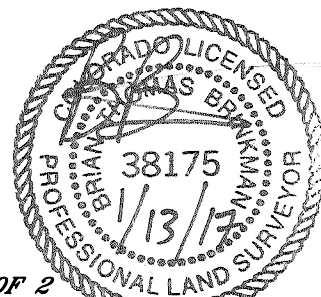
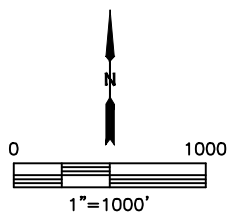
ELBERT 4N

SECTION: 21  
TOWNSHIP: 5N  
RANGE: 65W  
6TH. P.M.  
WELD COUNTY, CO



## LEGEND

- = ALIQUOT MONUMENT AS DESCRIBED
- = CALCULATED POSITION
- = SURFACE HOLE LOCATION (SHL)
- = ENTRY POINT LOCATION (EP)
- = BOTTOM HOLE LOCATION (BHL)
- = EXISTING WELL
- = ABANDONED WELL



**SHEET 2 OF 2**

Brian T. Brinkman—On behalf of Lat40°, Inc.  
Colorado Licensed Professional Land Surveyor No. 38175  
DATE: 1/13/2017  
PROJECT#: 2016085