

PHOTO: VIEW OF LOCATION STAKES

CAMERA ANGLE: NORTHERLY

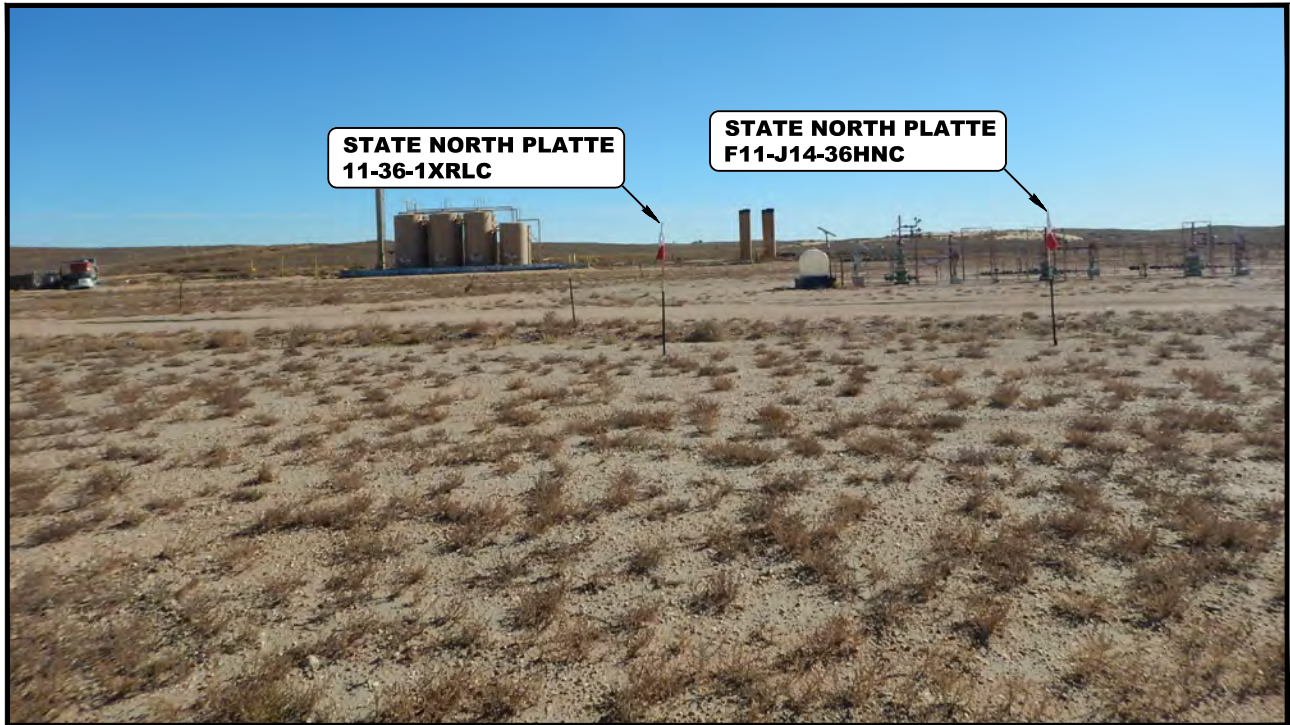


PHOTO: VIEW OF LOCATION STAKES

CAMERA ANGLE: EASTERLY

REV: 1 11-22-16 D.COX (SURFACE HOLE MOVES)

**BONANZA CREEK ENERGY
OPERATING COMPANY, LLC**

**STATE NORTH PLATTE F-36 PAD
NW 1/4 NW 1/4, SECTION 36, T5N, R63W, 6th P.M.
WELD COUNTY, COLORADO**

TAKEN BY	D.N., C.M.	10-20-16	
DRAWN BY	M.F.D.	11-18-16	

LOCATION PHOTOS

PHOTO 1



UELS, LLC
Corporate Office * 85 South 200 East
Vernal, UT 84078 * (435) 789-1017

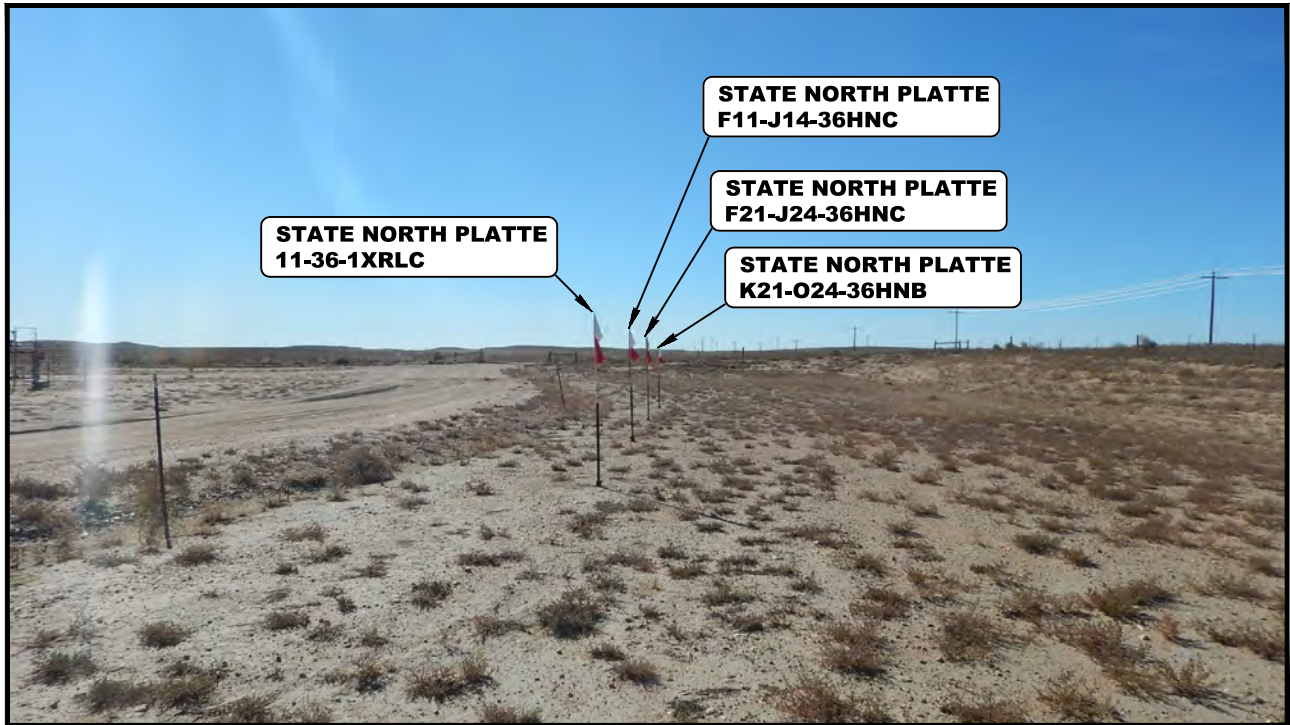


PHOTO: VIEW OF LOCATION STAKES

CAMERA ANGLE: SOUTHERLY

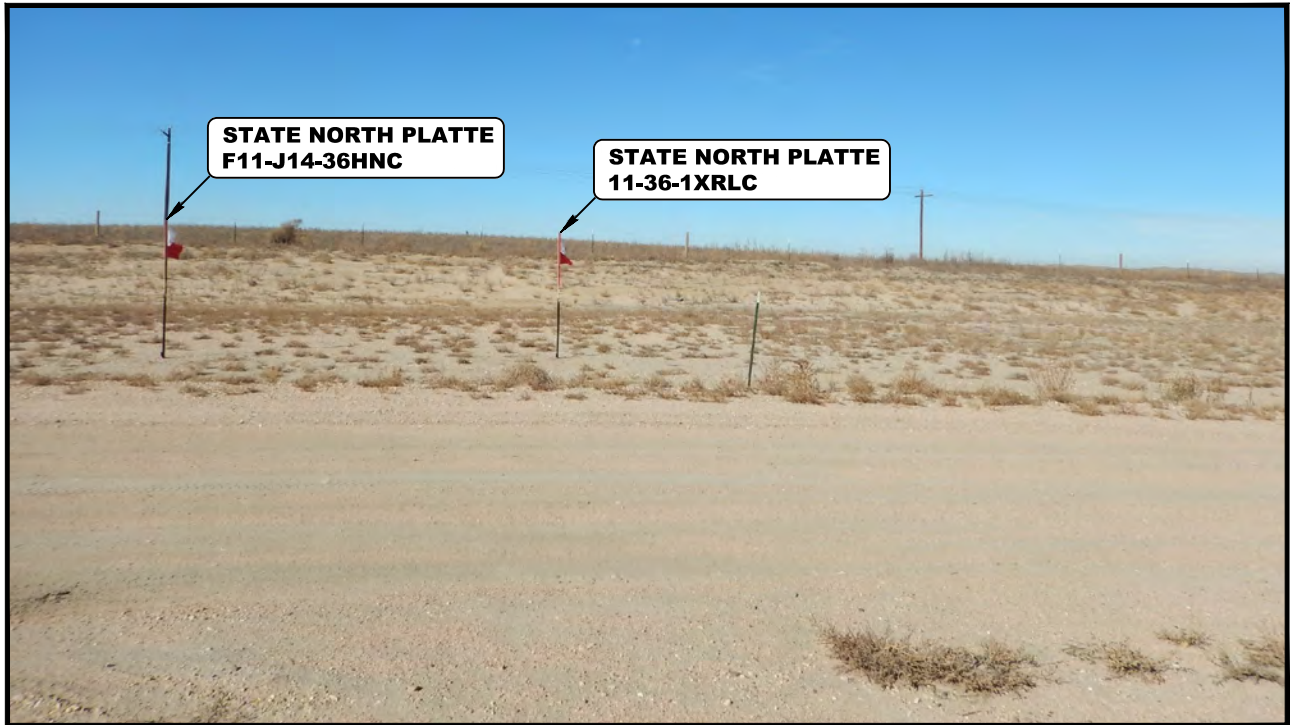


PHOTO: VIEW OF LOCATION STAKES

CAMERA ANGLE: WESTERLY

REV: 1 11-22-16 D.COX (SURFACE HOLE MOVES)

**BONANZA CREEK ENERGY
OPERATING COMPANY, LLC**

**STATE NORTH PLATTE F-36 PAD
NW 1/4 NW 1/4, SECTION 36, T5N, R63W, 6th P.M.
WELD COUNTY, COLORADO**

TAKEN BY	D.N., C.M.	10-20-16	
DRAWN BY	M.F.D.	11-18-16	

LOCATION PHOTOS

PHOTO 2



UELS, LLC
Corporate Office * 85 South 200 East
Vernal, UT 84078 * (435) 789-1017