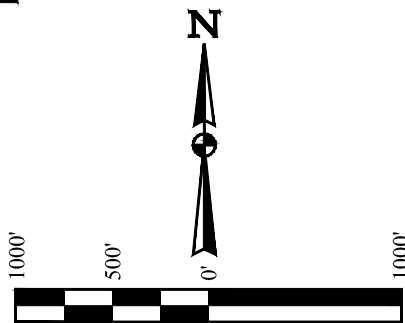
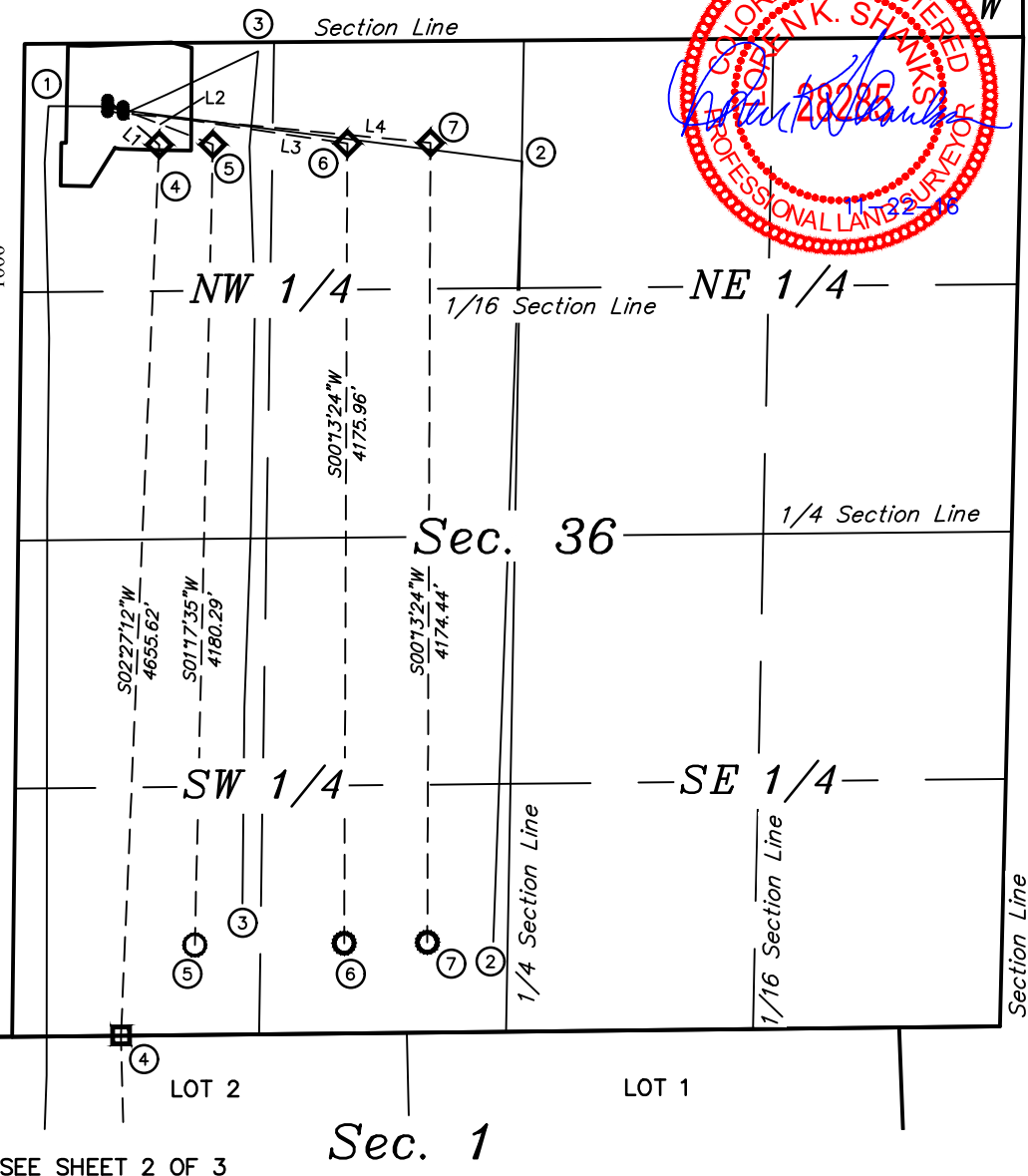


# LEGEND:

- = PROPOSED WELLHEAD.
- = TARGET BOTTOM HOLE.
- ◇ = TARGET 1.
- = TARGET 2.



LINE TABLE		
LINE	DIRECTION	LENGTH
L1	S49°04'56"E	355.11'
L2	S69°02'26"E	588.58'
L3	S81°34'16"E	1265.76'
L4	S84°29'53"E	1694.28'



SHEET 1 OF 3

#	WELL NAME	SHL FOOTAGE			SHL LAT (NAD 83)	SHL LONG (NAD 83)	SHL PDOP	SHL ELEV.	SHL 1/4 1/4
1	EX. STATE NORTH PLATTE 11-36-1XRLNB	330'	FNL	519'	N 40.362281°	W 104.392083°	1.7	4543.2'	NWNW
2	EX. STATE NORTH PLATTE K-O-36HC	350'	FNL	520'	N 40.362225°	W 104.392083°	1.7	4543.2'	NWNW
3	EX. STATE NORTH PLATTE F-J-36HNB	371'	FNL	520'	N 40.362169°	W 104.392083°	1.7	4543.1'	NWNW
4	STATE NORTH PLATTE 11-36-1XRLC	296'	FNL	439'	N 40.362369°	W 104.392372°	1.5	4543.1'	NWNW
5	STATE NORTH PLATTE F11-J14-36HNC	317'	FNL	439'	N 40.362314°	W 104.392372°	1.5	4543.2'	NWNW
6	STATE NORTH PLATTE F21-J24-36HNC	337'	FNL	439'	N 40.362261°	W 104.392375°	1.5	4543.2'	NWNW
7	STATE NORTH PLATTE K21-O24-36HNB	356'	FNL	439'	N 40.362206°	W 104.392375°	1.5	4543.1'	NWNW

REV: 2 11-22-16 D.COX (SURFACE HOLE MOVES)

## NOTES:

**BONANZA CREEK ENERGY  
OPERATING COMPANY, LLC**

**STATE NORTH PLATTE F-36 PAD  
NW 1/4 NW 1/4, SECTION 36, T5N, R63W, 6th P.M.  
WELD COUNTY, COLORADO**



**UELS, LLC**  
Corporate Office \* 85 South 200 East  
Vernal, UT 84078 \* (435) 789-1017

SURVEYED BY	DALLAS NIELSEN, C.M.	10-20-16	SCALE
DRAWN BY	K.B.	10-10-16	1" = 1000'
<b>MULTI-WELL PLAN</b>			

**LEGEND:**

- = PROPOSED WELLHEAD.
- = TARGET BOTTOM HOLE.
- ◇ = TARGET 1.
- = TARGET 2.

SEE SHEET 1 OF 3

Sec. 36

T5N  
T4N

LOT 2

LOT 1

NW 1/4—

1/16 Section Line

—NE 1/4—

S01°23'56"E  
4900.65'

Sec. 1

1/4 Section Line

—SW 1/4—

—SE 1/4—

1/4 Section Line

1/16 Section Line

Section Line

R  
63  
WR  
62  
W

SHEET 2 OF 3

#	WELL NAME	SHL FOOTAGE				SHL LAT (NAD 83)	SHL LONG (NAD 83)	SHL PDOP	SHL ELEV.	SHL 1/4 1/4
1	EX. STATE NORTH PLATTE 11-36-1XRLNB	330'	FNL	519'	FWL	N 40.362281°	W 104.392083°	1.7	4543.2'	NWNW
2	EX. STATE NORTH PLATTE K-O-36HC	350'	FNL	520'	FWL	N 40.362225°	W 104.392083°	1.7	4543.2'	NWNW
3	EX. STATE NORTH PLATTE F-J-36HNB	371'	FNL	520'	FWL	N 40.362169°	W 104.392083°	1.7	4543.1'	NWNW
4	STATE NORTH PLATTE 11-36-1XRLC	296'	FNL	439'	FWL	N 40.362369°	W 104.392372°	1.5	4543.1'	NWNW
5	STATE NORTH PLATTE F11-J14-36HNC	317'	FNL	439'	FWL	N 40.362314°	W 104.392372°	1.5	4543.2'	NWNW
6	STATE NORTH PLATTE F21-J24-36HNC	337'	FNL	439'	FWL	N 40.362261°	W 104.392375°	1.5	4543.2'	NWNW
7	STATE NORTH PLATTE K21-O24-36HNB	356'	FNL	439'	FWL	N 40.362206°	W 104.392375°	1.5	4543.1'	NWNW

REV: 2 11-22-16 D.COX (SURFACE HOLE MOVES)

**NOTES:**
**BONANZA CREEK ENERGY  
OPERATING COMPANY, LLC**

STATE NORTH PLATTE F-36 PAD  
NW 1/4 NW 1/4, SECTION 36, T5N, R63W, 6th P.M.  
WELD COUNTY, COLORADO

UELS, LLC

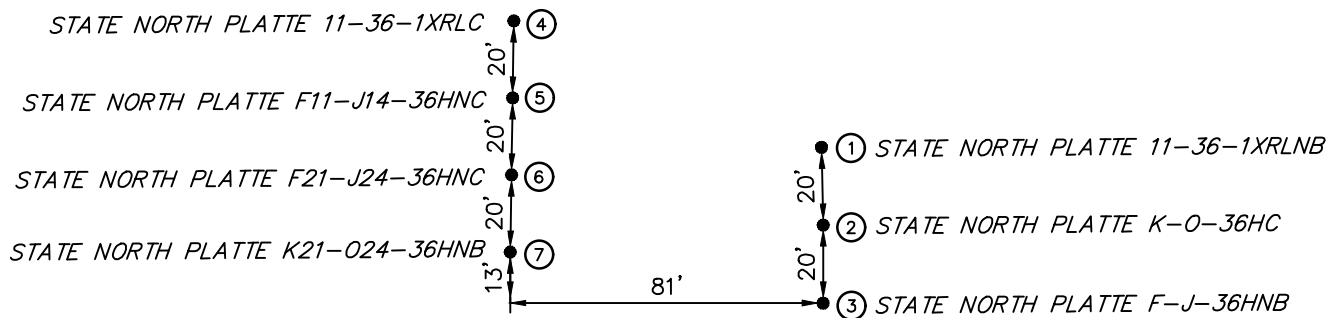
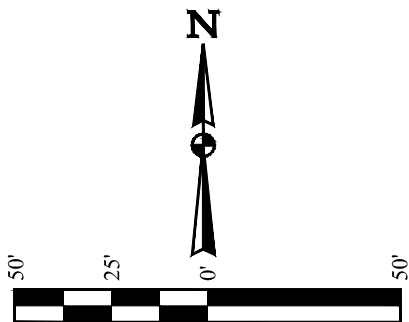
Corporate Office \* 85 South 200 East  
Vernal, UT 84078 \* (435) 789-1017

SURVEYED BY	DALLAS NIELSEN, C.M.	10-20-16	SCALE
DRAWN BY	K.B.	10-10-16	1" = 1000'

**MULTI-WELL PLAN**

**LEGEND:**

● = PROPOSED WELLHEAD.

**SHEET 3 OF 3**

#	WELL NAME	SHL FOOTAGE				SHL LAT (NAD 83)	SHL LONG (NAD 83)	SHL PDOP	SHL ELEV.	SHL 1/4 1/4
1	EX. STATE NORTH PLATTE 11-36-1XRLNB	330'	FNL	519'	FWL	N 40.362281°	W 104.392083°	1.7	4543.2'	NWNW
2	EX. STATE NORTH PLATTE K-O-36HC	350'	FNL	520'	FWL	N 40.362225°	W 104.392083°	1.7	4543.2'	NWNW
3	EX. STATE NORTH PLATTE F-J-36HNB	371'	FNL	520'	FWL	N 40.362169°	W 104.392083°	1.7	4543.1'	NWNW
4	STATE NORTH PLATTE 11-36-1XRLC	296'	FNL	439'	FWL	N 40.362369°	W 104.392372°	1.5	4543.1'	NWNW
5	STATE NORTH PLATTE F11-J14-36HNC	317'	FNL	439'	FWL	N 40.362314°	W 104.392372°	1.5	4543.2'	NWNW
6	STATE NORTH PLATTE F21-J24-36HNC	337'	FNL	439'	FWL	N 40.362261°	W 104.392375°	1.5	4543.2'	NWNW
7	STATE NORTH PLATTE K21-O24-36HNB	356'	FNL	439'	FWL	N 40.362206°	W 104.392375°	1.5	4543.1'	NWNW

REV: 2 11-22-16 D.COX (SURFACE HOLE MOVES)

**NOTES:****BONANZA CREEK ENERGY  
OPERATING COMPANY, LLC****STATE NORTH PLATTE F-36 PAD  
NW 1/4 NW 1/4, SECTION 36, T5N, R63W, 6th P.M.  
WELD COUNTY, COLORADO****UELS, LLC**  
Corporate Office \* 85 South 200 East  
Vernal, UT 84078 \* (435) 789-1017

SURVEYED BY	DALLAS NIELSEN, C.M.	10-20-16	SCALE
DRAWN BY	K.B.	10-10-16	1" = 1000'
<b>MULTI-WELL PLAN</b>			