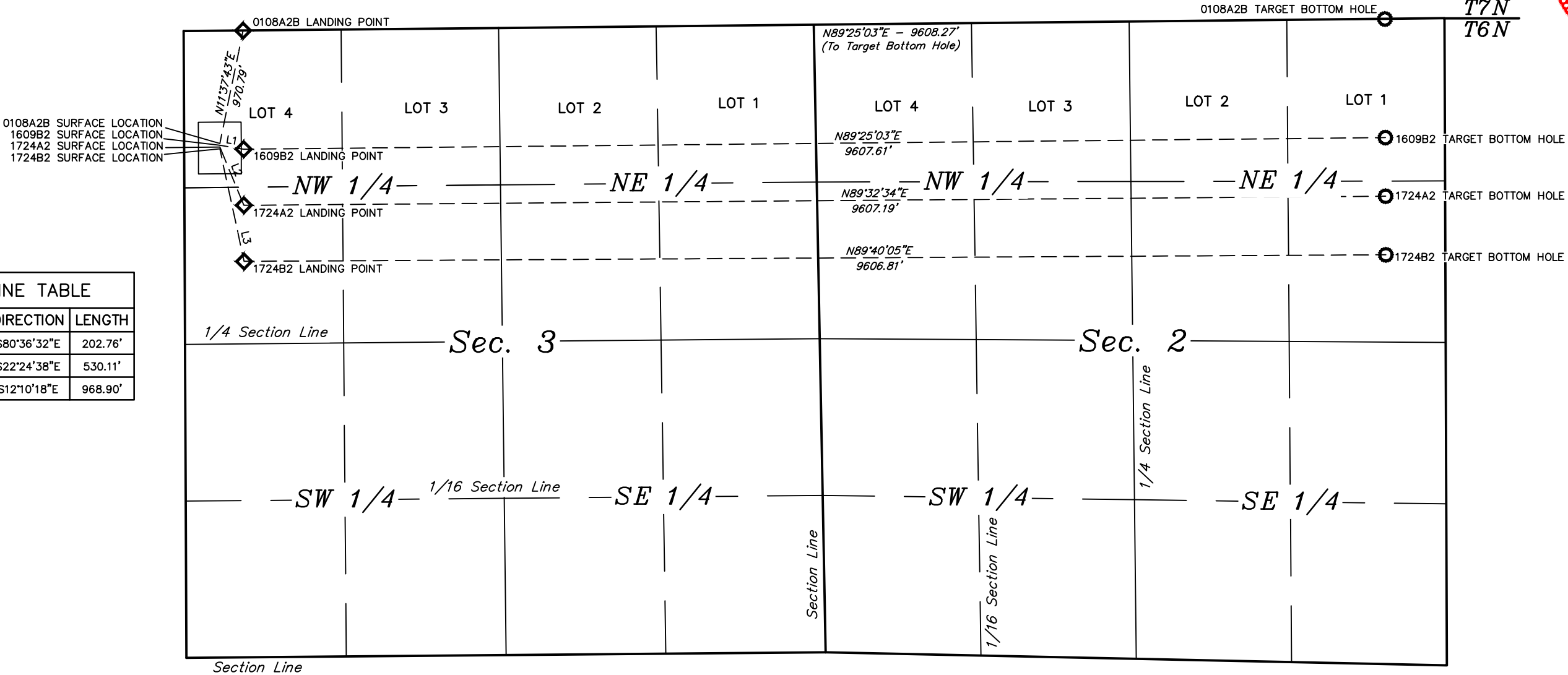




LEGEND:
○ = TARGET BOTTOM HOLE.
◇ = LANDING POINT.



LINE TABLE		
LINE	DIRECTION	LENGTH
L1	S80°36'32"E	202.76'
L2	S22°24'38"E	530.11'
L3	S12°10'18"E	968.90'

REV: 2 11-18-16 K.B. (NAME, SL, LP, & TBH CHANGE)

BILL BARRETT CORPORATION

WILL TRUST 6-62-3 2 NWNW PAD
LOT 4, SECTION 3, T6N, R62W, 6th P.M.
WELD COUNTY, COLORADO

SURVEYED BY	CHAD MEIERS	10-11-16	SCALE
DRAWN BY	K.B.	12-31-15	1" = 1000'
MULTI-WELL PLAN			FIGURE #5



UELS, LLC
Corporate Office * 85 South 200 East
Vernal, UT 84078 * (435) 789-1017