

PHOTO: VIEW FROM CORNER #1 TO LOCATION STAKE

CAMERA ANGLE: EASTERLY



PHOTO: VIEW FROM BEGINNING OF PROPOSED ACCESS

CAMERA ANGLE: EASTERLY

REV: 2 11-18-16 K.B. (PAD MOVE)

## BILL BARRETT CORPORATION

WILL TRUST 6-62-3 2 NWNW PAD  
LOT 4, SECTION 3, T6N, R62W, 6th P.M.  
WELD COUNTY, COLORADO



UELS, LLC  
Corporate Office \* 85 South 200 East  
Vernal, UT 84078 \* (435) 789-1017

TAKEN BY	C.M.	10-11-16	
DRAWN BY	J.L.G.	12-28-15	
LOCATION PHOTOS			PHOTO 1

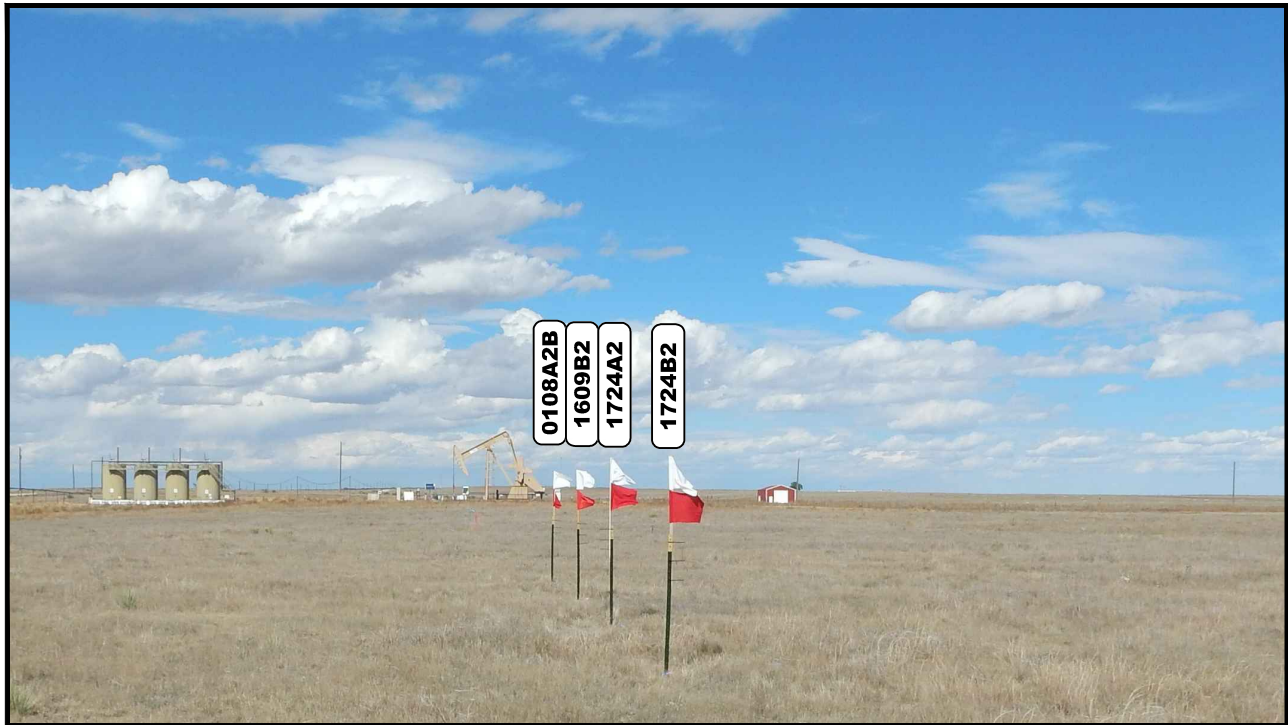


PHOTO: VIEW OF LOCATION STAKES

CAMERA ANGLE: NORTHERLY



PHOTO: VIEW OF LOCATION STAKES

CAMERA ANGLE: EASTERLY

REV: 2 11-18-16 K.B. (PAD MOVE)

## BILL BARRETT CORPORATION

WILL TRUST 6-62-3 2 NWNW PAD  
LOT 4, SECTION 3, T6N, R62W, 6th P.M.  
WELD COUNTY, COLORADO



UELS, LLC  
Corporate Office \* 85 South 200 East  
Vernal, UT 84078 \* (435) 789-1017

TAKEN BY	C.M.	10-11-16	
DRAWN BY	J.L.G.	12-28-15	
LOCATION PHOTOS			PHOTO 2



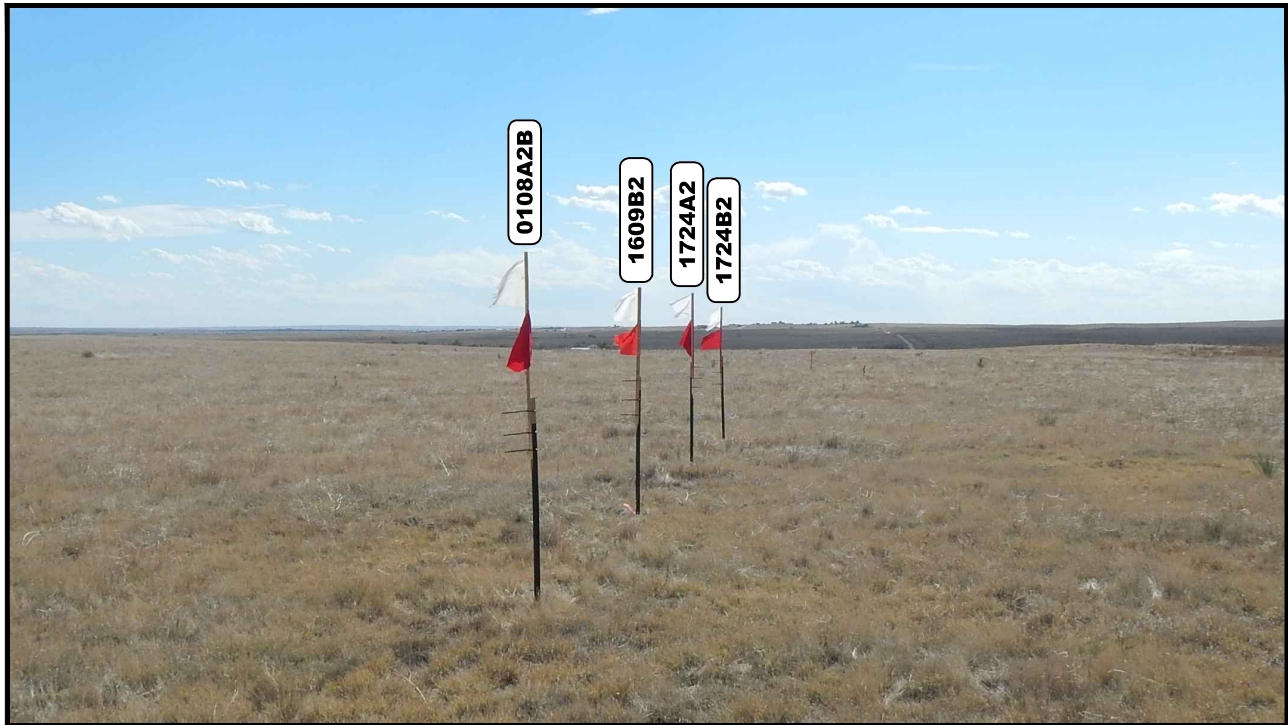


PHOTO: VIEW OF LOCATION STAKES

CAMERA ANGLE: SOUTHERLY

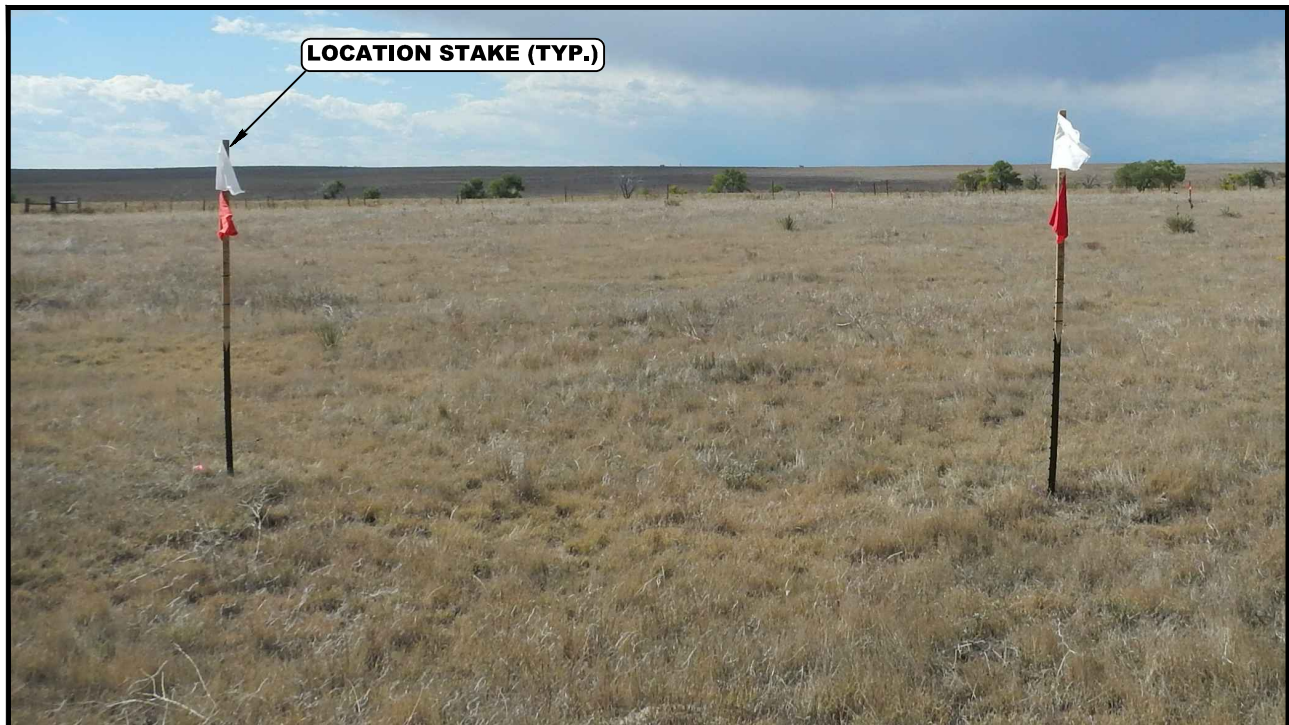


PHOTO: VIEW OF LOCATION STAKES

CAMERA ANGLE: WESTERLY

REV: 2 11-18-16 K.B. (PAD MOVE)

## BILL BARRETT CORPORATION

WILL TRUST 6-62-3 2 NWNW PAD  
LOT 4, SECTION 3, T6N, R62W, 6th P.M.  
WELD COUNTY, COLORADO

TAKEN BY	C.M.	10-11-16	
DRAWN BY	J.L.G.	12-28-15	
LOCATION PHOTOS			PHOTO 3



UELS, LLC  
Corporate Office \* 85 South 200 East  
Vernal, UT 84078 \* (435) 789-1017