

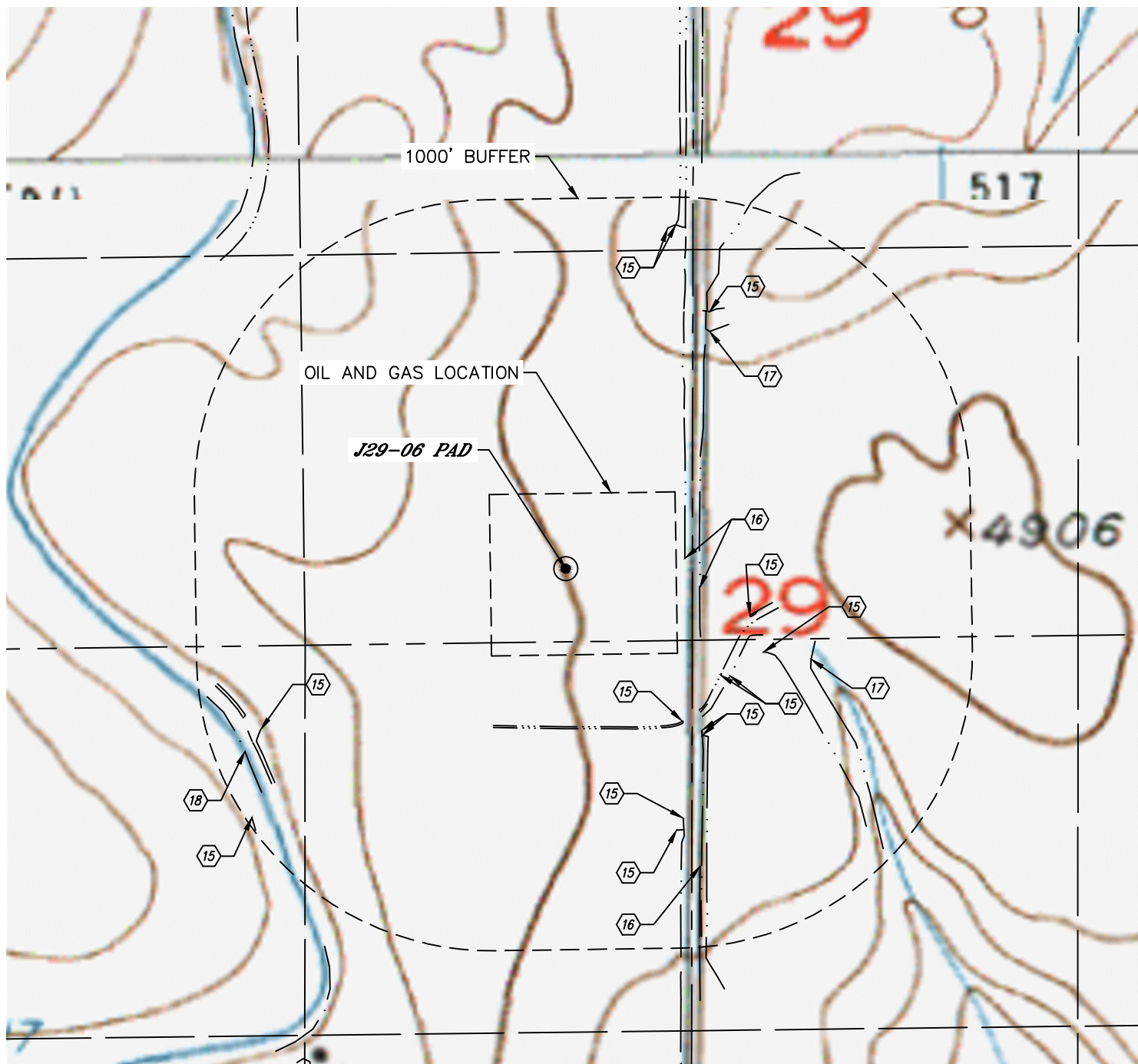


Lat40°, Inc. 6250 W. 10th Street, Unit 2, Greeley, CO 970-515-5294





HYDROLOGY MAP

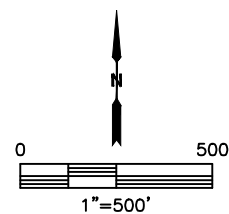
J29-06 PAD

SECTION: 29
TOWNSHIP: 5N
RANGE: 66W
6TH. P.M.
WELD COUNTY, CO



DISTANCES MEASURED FROM THE EDGE OF THE OIL AND GAS LOCATION.

-  DITCH 116', 193', 247', 274', 291', 292' & 559' SE, 231' & 600' S, 623' NE, 823' & 980' SW, 894' & 906' N
-  BORROW DITCH 30' & 80' E, 726' SE
-  LOW AREA 454' E, 557' NE
-  LOVELAND AND GREELEY CANAL 897' SW



DATE: 10/5/2016
PROJECT#: 2016030