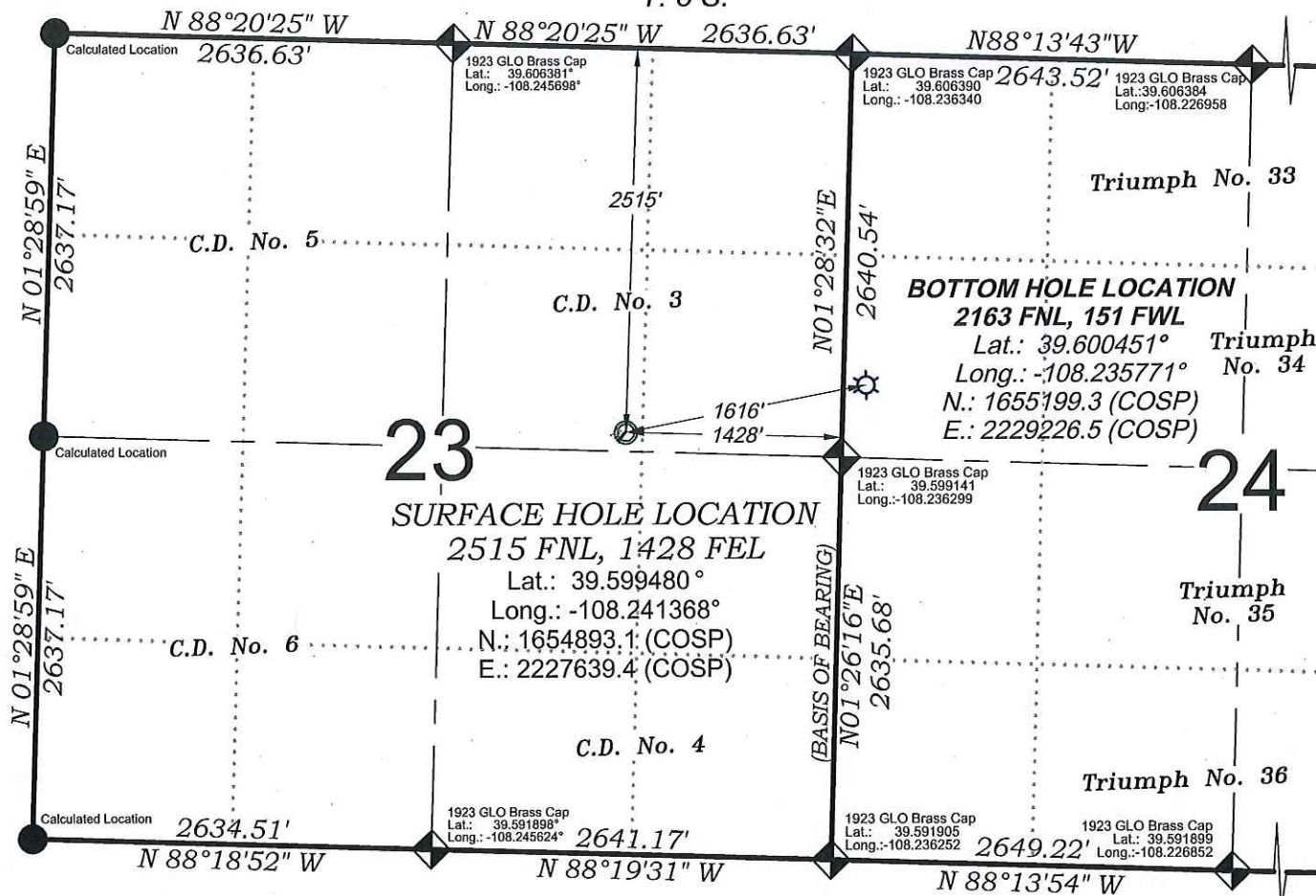


Chevron TR 512-24-597

T. 5 S.



SEE CONSTRUCTION LAYOUT PLAT
 FOR VISIBLE IMPROVEMENTS
 WITHIN 500' OF THIS LOCATION

EXISTING GROUND ELEV.: 8545.2
 PROPOSED PAD ELEV.: 8545.2

SURVEYORS STATEMENT

I, MICHAEL J. LANGHORNE, A REGISTERED LAND SURVEYOR IN THE STATE OF COLORADO DO HEREBY CERTIFY THAT THE SURVEY SHOWN HEREON WAS PREPARED UNDER MY DIRECT SUPERVISION AND HAS BEEN STAKED ON THE GROUND AS SHOWN ON THE PLAT AND CHECKING THAT THIS MAP IS A TRUE REPRESENTATION THEREOF.

MICHAEL J. LANGHORNE, COLORADO REGISTRATION NO. 36572
 FOR AND ON BEHALF OF
 BOOKCLIFF SURVEY SERVICES, INC.

REFERENCES

- 1) INDEPENDENT RE-SURVEY T. 5 S., R. 97 W., 6th P.M (GLO PLAT)
- 2) U.S.G.S. QUAD: Circle Dot Gulch, CO

136 East Third Street
 Rifle, Colorado
 81650 Ph. (970)
 625-2720 Fax (970)
 625-2773

BOOKCLIFF
 Survey Services, Inc.

SURVEY DATE: 1/18/17
 MAP DATE: 1/19/17
 SCALE: 1" = 1200'
 PLAT: 1 of 1
 PROJECT: TEP Valley

- LEGEND -

FIELD LOCATED SECTION
 MONUMENTS AS DESCRIBED

FIELD SURVEYED
 WELL LOCATION

CALCULATED BOTTOM
 HOLE LOCATION

CALCULATED SECTION
 CORNER LOCATION

NOTES

- 1) ELEVATIONS BASED ON N.A.V.D. 1988 PUBLISHED COORDINATES.
- 2) LATITUDES AND LONGITUDES ARE BASE ON NAD 83, PUBLISHED COORDINATES
- 3) STATE PLANE COORDINATES ARE BASED ON COLORADO CENTRAL ZONE, U.S. SURVEY FEET.
- 4) ELEVATION MASK SET TO 15"
- 5) GPS OPERATOR J. KIRKPATRICK, OBSERVED A PDOP 2.5 ON SURVEY POINT NUMBER 221.
- 6) SURFACE AND BOTTOM HOLE LOCATIONS ARE MEASURED 90° FROM SECTION LINES.

WELL LOCATION PLAT Prepared for:

TERRA
 ENERGY PARTNERS

TEP Rocky Mountain LLC

SW1/4 NE1/4, SECTION 23
 T. 5 S., R. 97 W. of the 6th. P.M.
 GARFIELD COUNTY, COLORADO