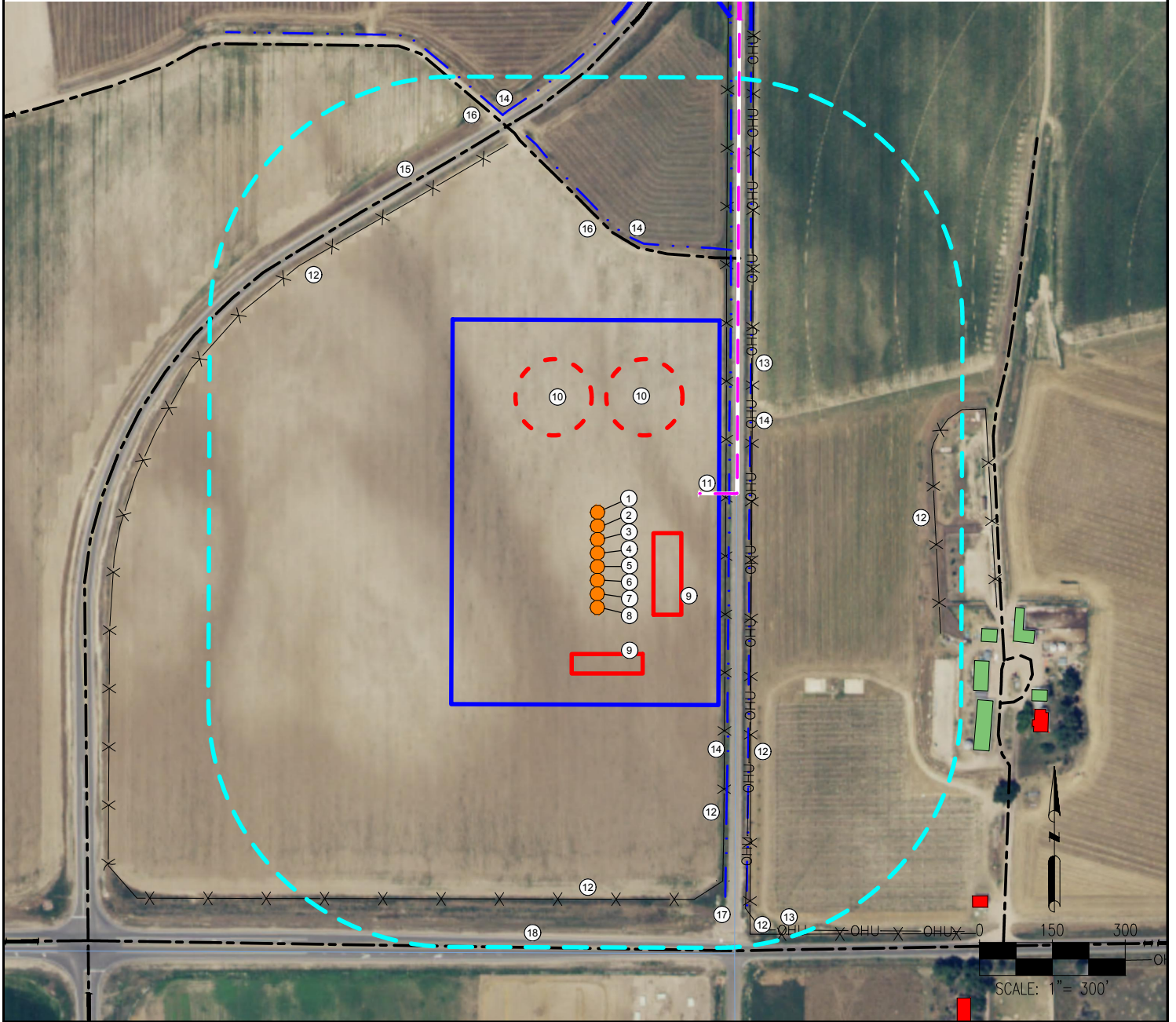


WINDSOR LV2 14-M PAD LOCATION DRAWING



- | | | |
|------------------|---|--|
| 1. WINDSOR LV2 1 | 9. PROPOSED FACILITY BERM | 16. PRIVATE ROADS ARE ±632' N, ±898' NW |
| 2. WINDSOR LV2 2 | 10. PROPOSED MLVT | 17. OLD COUNTY ROAD 23 (PRIVATE ROAD) IS ±278' E |
| 3. WINDSOR LV2 3 | 11. PROPOSED ACCESS ROAD | 18. CO HWY 392 IS ±795' S |
| 4. WINDSOR LV2 4 | 12. FENCES ARE ±264' E, ±317' E, ±697' E, ±713' S, ±820' NW, ±845' SE | |
| 5. WINDSOR LV2 5 | 13. OVERHEAD UTILITIES ARE ±315' E, ±846' SE | |
| 6. WINDSOR LV2 6 | 14. DITCHES ARE ±270' E, ±312' E, ±644' N, ±923' NW | |
| 7. WINDSOR LV2 7 | 15. COUNTY ROAD 23 IS ±836' NW | |
| 8. WINDSOR LV2 8 | | |

LEGEND:

- | | | | | | | | | | | |
|-------------------|-----------------------|---------------|-------------------|----------------------------|-----------------------------------|-----------------------------|-------------------------------|----------------------------|--|------------------------------|
| ● = PROPOSED WELL | — — — = EXISTING ROAD | — — — = DITCH | — X — X — = FENCE | — OHU — = OVERHEAD UTILITY | [Blue Outline] = DISTURBANCE AREA | [Cyan Dashed] = 500' RADIUS | [Red Outline] = BUILDING UNIT | [Green Outline] = BUILDING | [Red Outline] = PROPOSED FACILITY BERM | [Red Dashed] = PROPOSED MLVT |
|-------------------|-----------------------|---------------|-------------------|----------------------------|-----------------------------------|-----------------------------|-------------------------------|----------------------------|--|------------------------------|

MEASURED FROM NEAREST WELL OR FACILITY:

BUILDING ±603' E
BUILDING UNIT ±733' SE
PUBLIC ROAD (HWY 392) ±537' S
PROPERTY LINE (Stromberger David Leonard) ±112' E
UTILITY (POWERLINE) ±142' E
RAILROAD ±4728' SW

MEASURED FROM NEAREST EDGE OF DISTURBANCE:
SURFACE WATER (DITCH) ±19' E

MEASURED FROM NEAREST WELL:

WATER WELL ±1393' S SWL = 0' PERMIT: 250751 RECEIPT: 0509671
WATER WELL ±1995' SW SWL = 30' PERMIT: 14729-R-R RECEIPT: 9062044

REFERENCE LOCATION

WINDSOR LV2 4

LAT: 40.481878°
LONG: -104.852464°
ELEVATION: 4813'
824' FSL & 286' FEL
PDOP: 1.33
GPS OPERATOR: DOMINICK DAVIS

DISCLAIMER:
THIS PLOT DOES NOT REPRESENT A MONUMENTED LAND SURVEY AND SHOULD NOT BE RELIED UPON TO DETERMINE BOUNDARY LINES, PROPERTY OWNERSHIP OR OTHER PROPERTY INTERESTS. PARCEL LINES, IF DEPICTED HAVE NOT BEEN FIELD VERIFIED AND MAY BE BASED UPON PUBLICLY AVAILABLE DATA THAT ALSO HAS NOT BEEN INDEPENDENTLY VERIFIED.

DATA SOURCE:
AERIAL IMAGERY: NAIP 2015
WATER WELLS: COLORADO DWR
NHD: USGS

PUBLICLY AVAILABLE DATA SOURCES HAVE NOT BEEN INDEPENDENTLY VERIFIED BY PFS.

DISTURBANCE ACREAGE:

10.00 ACRES DRILLING OPERATIONS
5.00 ACRES INTERIM RECLAIM
CURRENT SURFACE USE: IRRIGATED CROP
FUTURE SURFACE USE: IRRIGATED CROP

PREPARED BY:



FIELD DATE:
09-16-16

DRAWING DATE:
12-27-16

BY:
IJM

CHECKED BY:
JLG

SITE NAME:

WINDSOR LV2 14-M PAD

SURFACE LOCATION:

SE 1/4 SE 1/4 SEC. 14, T6N, R67W, 6TH P.M.
WELD COUNTY, COLORADO

PREPARED FOR:

