



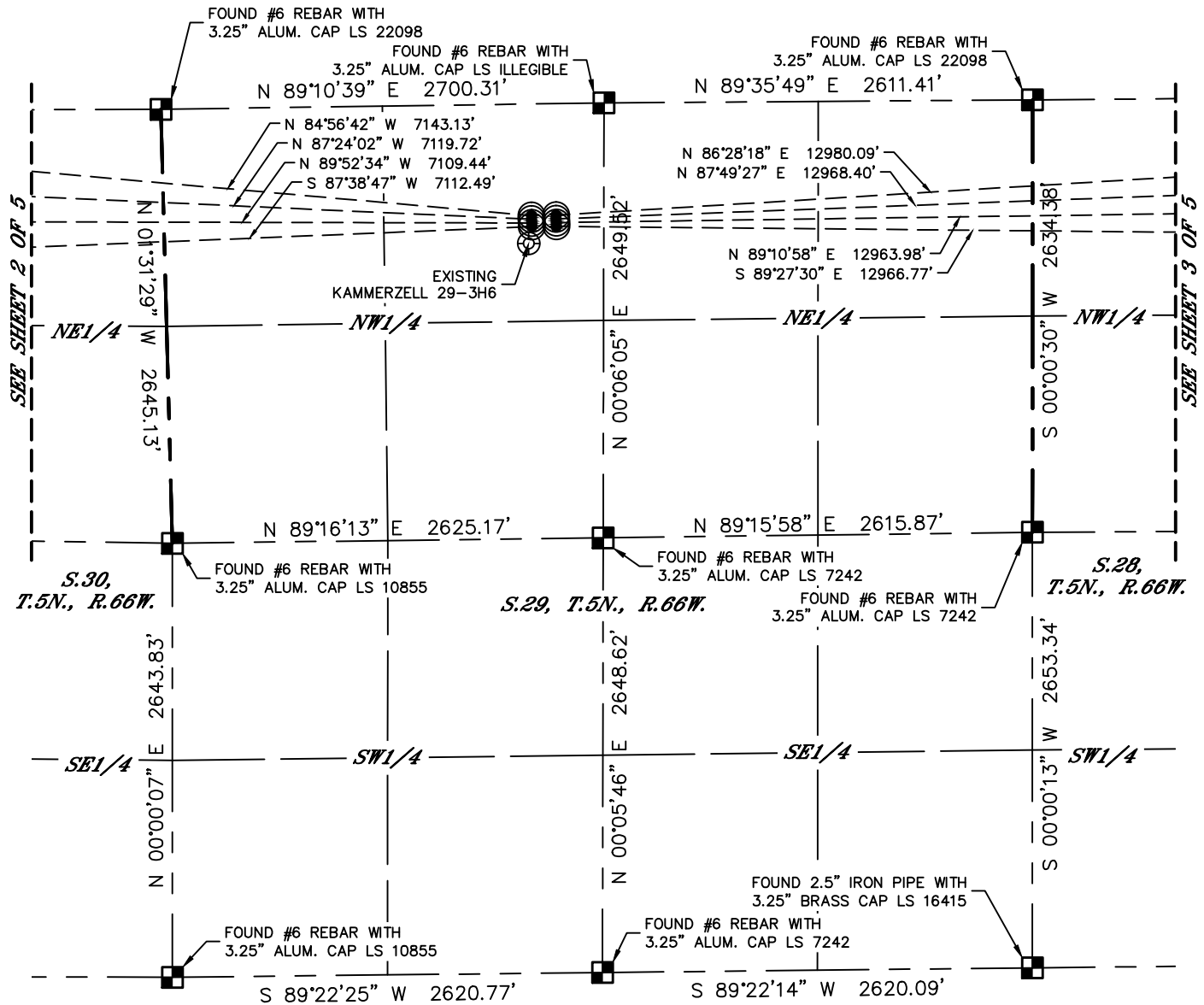
Lat40°, Inc. 6250 W. 10th Street, Unit 2, Greeley, CO 970-515-5294

MULTI-WELL PLAN

J29-03 PAD

SECTION: 29
TOWNSHIP: 5N
RANGE: 66W
6TH. P.M.
WELD COUNTY, CO

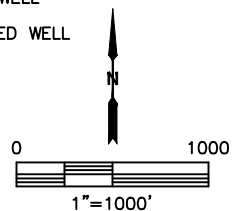
THIS MAP DOES NOT REPRESENT A BOUNDARY SURVEY



#	WELL NAME		BHL FOOTAGE	BHL LAT°	BHL LONG°	BHL S-T-R
1	SANFORD J30-690	1	FNL 460 FWL	40.37776	-104.83044	30-5-66
2	SANFORD J30-685	330	FNL 460 FWL	40.37686	-104.83044	30-5-66
3	SANFORD J30-680	660	FNL 460 FWL	40.37596	-104.83044	30-5-66
4	SANFORD J30-675	990	FNL 460 FWL	40.37505	-104.83044	30-5-66
5	SANFORD J29-690	1	FNL 460 FEL	40.37779	-104.75788	27-5-66
6	SANFORD J29-685	330	FNL 460 FEL	40.37689	-104.75788	27-5-66
7	SANFORD J29-680	660	FNL 460 FEL	40.37599	-104.75787	27-5-66
8	SANFORD J29-675	990	FNL 460 FEL	40.37508	-104.75787	27-5-66

LEGEND

- = ALIQUOT MONUMENT AS DESCRIBED
- = CALCULATED POSITION
- = SURFACE HOLE LOCATION (SHL)
- ▲ = ENTRY POINT LOCATION (EP)
- = BOTTOM HOLE LOCATION (BHL)
- ⊙ = EXISTING WELL
- ⊙ = ABANDONED WELL



SHEET 1 OF 5

DATE: 1/3/2017
PROJECT#: 2016030



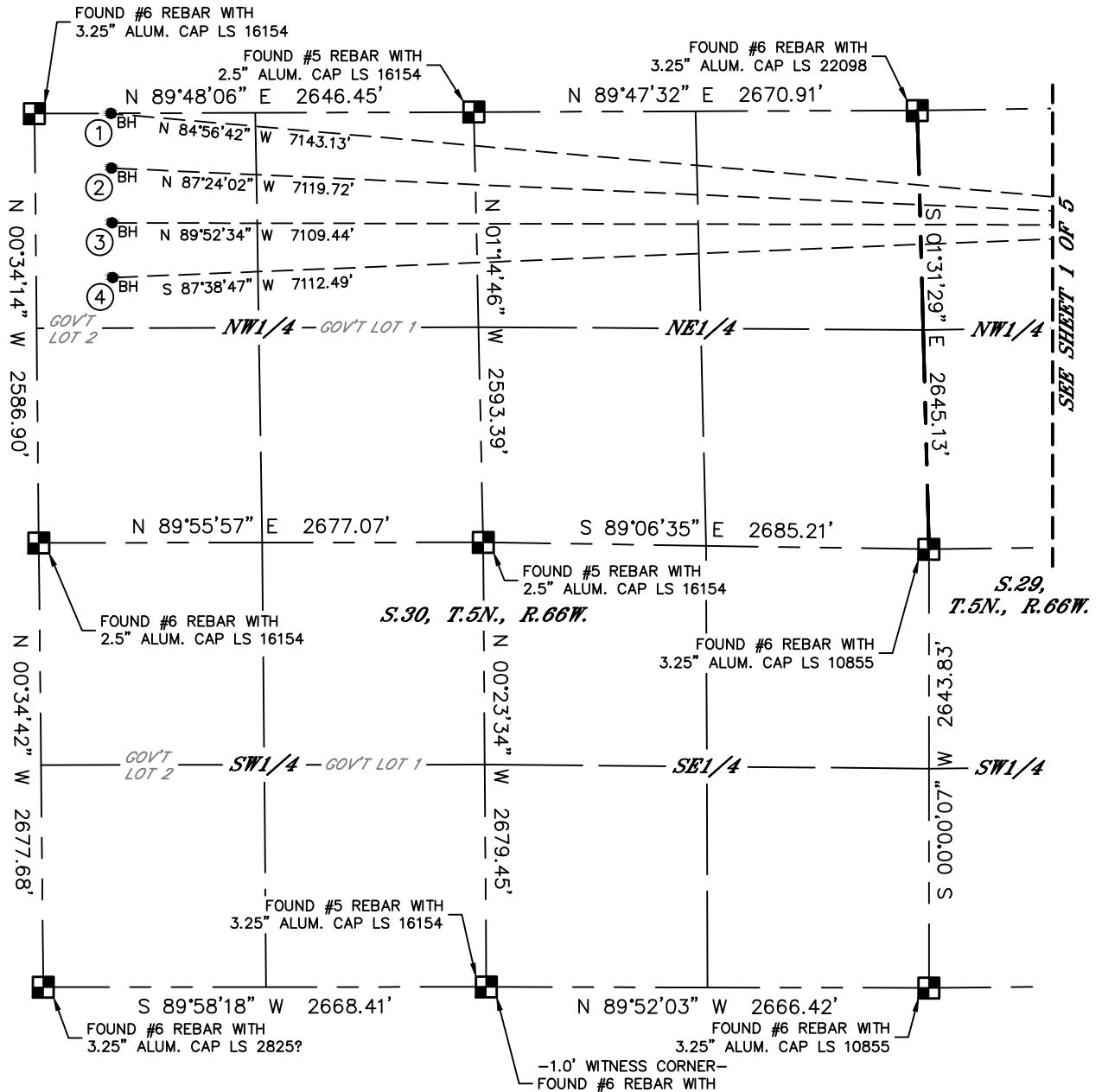
Lat40°, Inc. 6250 W. 10th Street, Unit 2, Greeley, CO 970-515-5294

MULTI-WELL PLAN

J29-03 PAD

SECTION: 29
TOWNSHIP: 5N
RANGE: 66W
6TH. P.M.
WELD COUNTY, CO

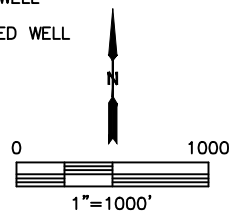
THIS MAP DOES NOT REPRESENT A BOUNDARY SURVEY



#	WELL NAME	BHL FOOTAGE				BHL LAT °	BHL LONG °	BHL S-T-R
1	SANFORD J30-690	1	FNL	460	FWL	40.37776	-104.83044	30-5-66
2	SANFORD J30-685	330	FNL	460	FWL	40.37686	-104.83044	30-5-66
3	SANFORD J30-680	660	FNL	460	FWL	40.37596	-104.83044	30-5-66
4	SANFORD J30-675	990	FNL	460	FWL	40.37505	-104.83044	30-5-66
5	SANFORD J29-690	1	FNL	460	FEL	40.37779	-104.75788	27-5-66
6	SANFORD J29-685	330	FNL	460	FEL	40.37689	-104.75788	27-5-66
7	SANFORD J29-680	660	FNL	460	FEL	40.37599	-104.75787	27-5-66
8	SANFORD J29-675	990	FNL	460	FEL	40.37508	-104.75787	27-5-66

LEGEND

- = ALIQUOT MONUMENT AS DESCRIBED
- = CALCULATED POSITION
- = SURFACE HOLE LOCATION (SHL)
- ▲ = ENTRY POINT LOCATION (EP)
- = BOTTOM HOLE LOCATION (BHL)
- ⊙ = EXISTING WELL
- ⊙ = ABANDONED WELL





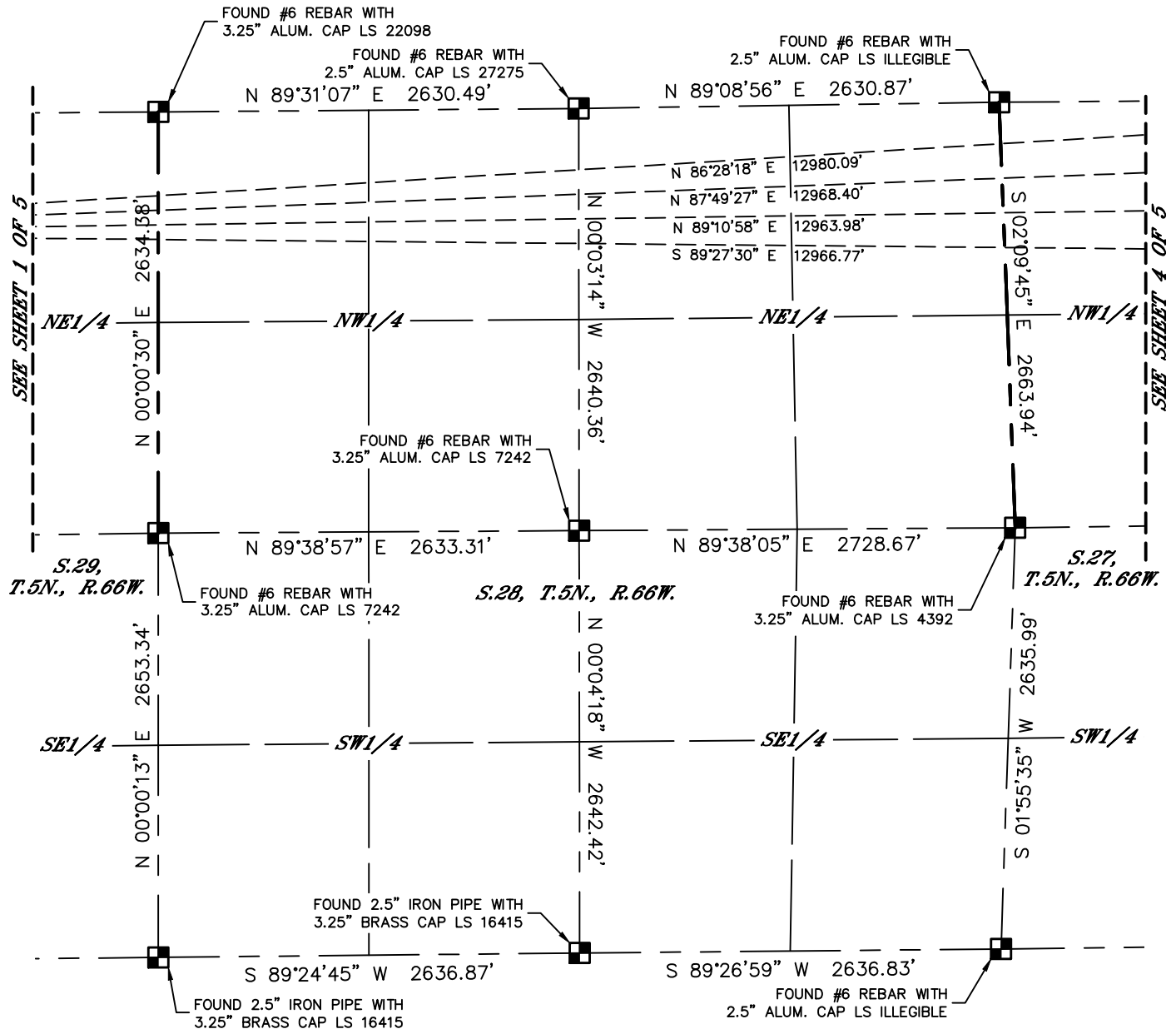
Lat40°, Inc. 6250 W. 10th Street, Unit 2, Greeley, CO 970-515-5294

MULTI-WELL PLAN

J29-03 PAD

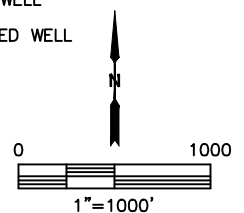
SECTION: 29
TOWNSHIP: 5N
RANGE: 66W
6TH. P.M.
WELD COUNTY, CO

THIS MAP DOES NOT REPRESENT A BOUNDARY SURVEY



#	WELL NAME		BHL FOOTAGE		BHL LAT °	BHL LONG °	BHL S-T-R
1	SANFORD J30-690	1	FNL 460	FWL	40.37776	-104.83044	30-5-66
2	SANFORD J30-685	330	FNL 460	FWL	40.37686	-104.83044	30-5-66
3	SANFORD J30-680	660	FNL 460	FWL	40.37596	-104.83044	30-5-66
4	SANFORD J30-675	990	FNL 460	FWL	40.37505	-104.83044	30-5-66
5	SANFORD J29-690	1	FNL 460	FEL	40.37779	-104.75788	27-5-66
6	SANFORD J29-685	330	FNL 460	FEL	40.37689	-104.75788	27-5-66
7	SANFORD J29-680	660	FNL 460	FEL	40.37599	-104.75787	27-5-66
8	SANFORD J29-675	990	FNL 460	FEL	40.37508	-104.75787	27-5-66

- LEGEND
- = ALIQUOT MONUMENT AS DESCRIBED
 - = CALCULATED POSITION
 - = SURFACE HOLE LOCATION (SHL)
 - ▲ = ENTRY POINT LOCATION (EP)
 - _{BH} = BOTTOM HOLE LOCATION (BHL)
 - ⊙ = EXISTING WELL
 - ⊙ = ABANDONED WELL





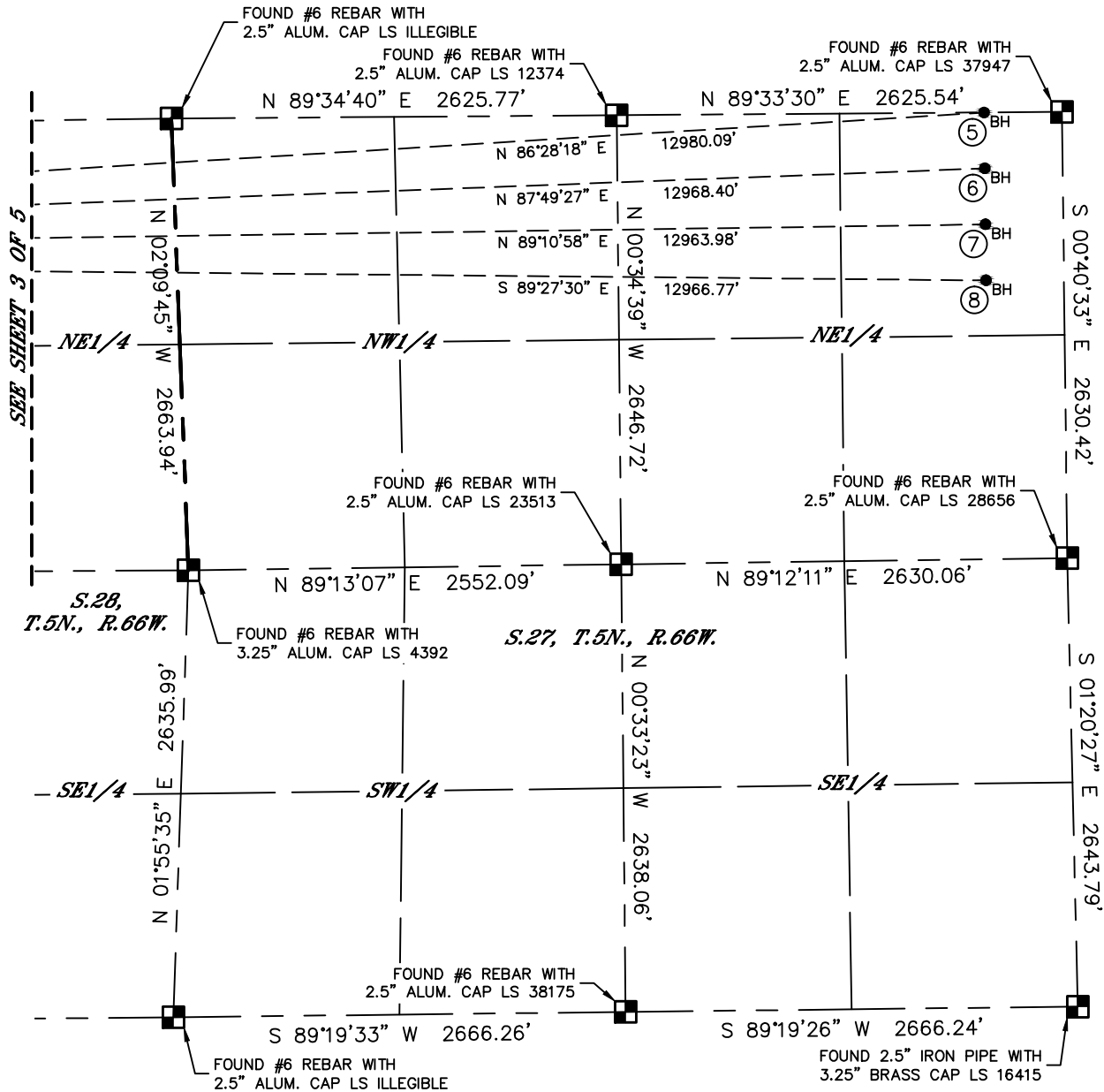
Lat40°, Inc. 6250 W. 10th Street, Unit 2, Greeley, CO 970-515-5294

MULTI-WELL PLAN

J29-03 PAD

SECTION: 29
TOWNSHIP: 5N
RANGE: 66W
6TH. P.M.
WELD COUNTY, CO

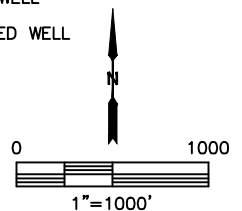
THIS MAP DOES NOT REPRESENT A BOUNDARY SURVEY



#	WELL NAME			BHL FOOTAGE		BHL LAT °	BHL LONG °	BHL S-T-R
1	SANFORD J30-690	1	FNL	460	FWL	40.37776	-104.83044	30-5-66
2	SANFORD J30-685	330	FNL	460	FWL	40.37686	-104.83044	30-5-66
3	SANFORD J30-680	660	FNL	460	FWL	40.37596	-104.83044	30-5-66
4	SANFORD J30-675	990	FNL	460	FWL	40.37505	-104.83044	30-5-66
5	SANFORD J29-690	1	FNL	460	FEL	40.37779	-104.75788	27-5-66
6	SANFORD J29-685	330	FNL	460	FEL	40.37689	-104.75788	27-5-66
7	SANFORD J29-680	660	FNL	460	FEL	40.37599	-104.75787	27-5-66
8	SANFORD J29-675	990	FNL	460	FEL	40.37508	-104.75787	27-5-66

LEGEND

- = ALIQUOT MONUMENT AS DESCRIBED
- = CALCULATED POSITION
- = SURFACE HOLE LOCATION (SHL)
- ▲ = ENTRY POINT LOCATION (EP)
- = BOTTOM HOLE LOCATION (BHL)
- ⊙ = EXISTING WELL
- ⊙ = ABANDONED WELL



SHEET 4 OF 5

DATE: 1/3/2017
PROJECT#: 2016030



Lat40°, Inc. 6250 W. 10th Street, Unit 2, Greeley, CO 970-515-5294

MULTI-WELL PLAN

J29-03 PAD

SECTION: 29
TOWNSHIP: 5N
RANGE: 66W
6TH. P.M.
WELD COUNTY, CO

