

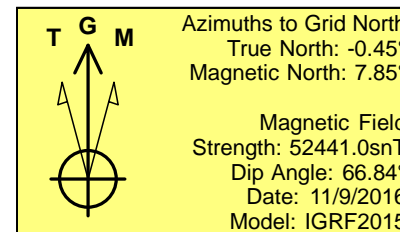
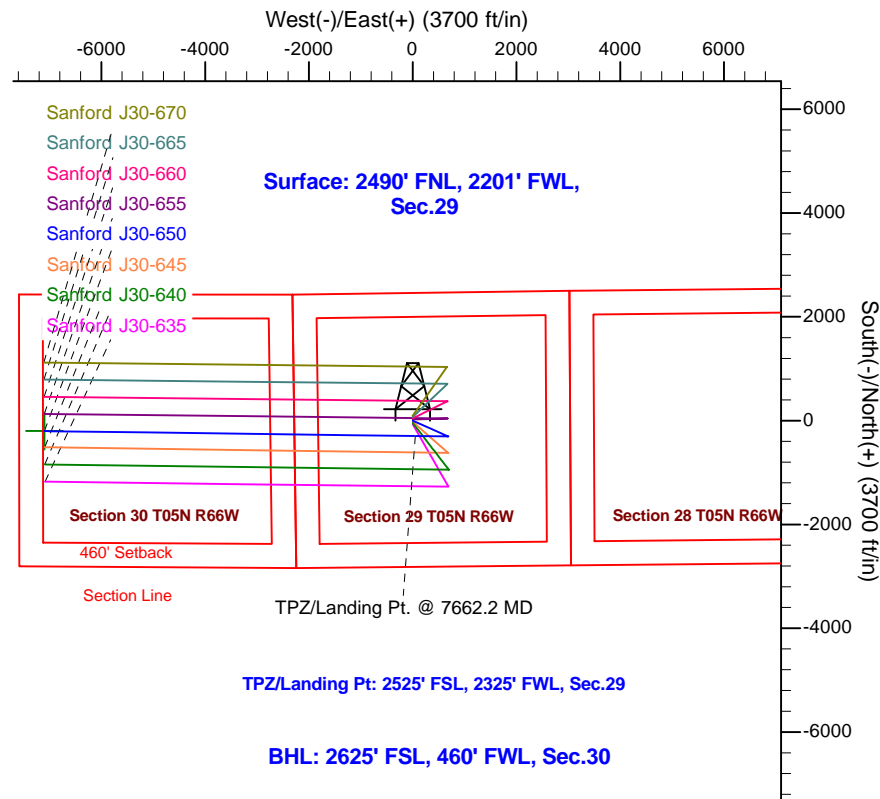
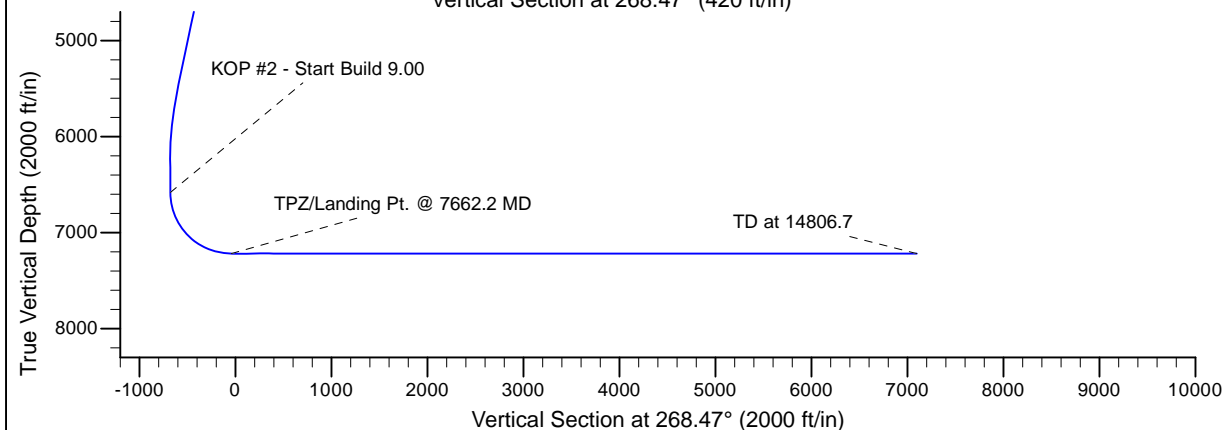
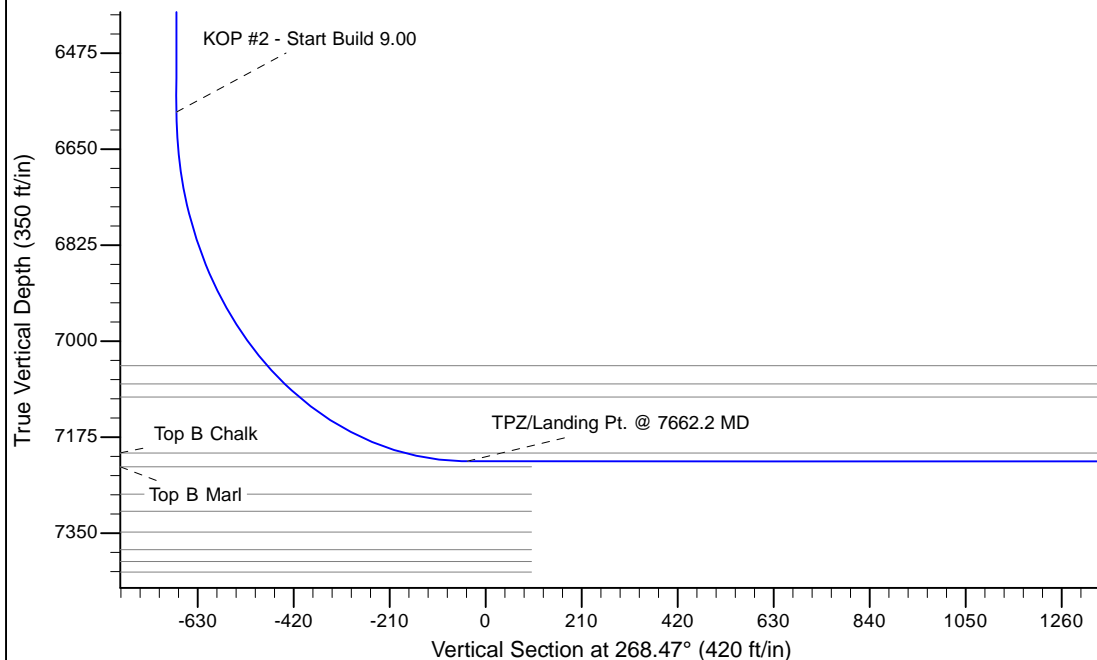
Project: Greeley Crescent  
 Site: J Section 29-T5N-R66W Weld County, CO  
 Well: Sanford J30-650  
 Wellbore: Original Drilling  
 Design: APD - Rev 1

# Northern Region - DJ Basin

Geodetic System: US State Plane 1983  
 Datum: North American Datum 1983  
 Ellipsoid: GRS 1980  
 Zone: Colorado Northern Zone  
 System Datum: Mean Sea Level

## SECTION DETAILS

Sec	MD	Inc	Azi	TVD	+N/-S	+E/-W	Dleg	TFace	VSec	Target
1	0.0	0.00	0.00	0.0	0.0	0.0	0.00	0.00	0.0	
2	2300.0	0.00	0.00	2300.0	0.0	0.0	0.00	0.00	0.0	
3	2950.2	13.00	114.00	2944.6	-29.9	67.1	2.00	114.00	-66.3	
4	5629.7	13.00	114.00	5555.4	-275.1	617.9	0.00	0.00	-610.3	
5	6279.8	0.00	0.00	6200.0	-305.0	685.0	2.00	180.00	-676.6	
6	6662.2	0.00	0.00	6582.4	-305.0	685.0	0.00	0.00	-676.6	
7	7662.2	90.00	270.77	7219.0	-296.4	48.4	9.00	270.77	-40.5	
8	14806.7	90.00	270.77	7219.0	-200.3	-7095.4	0.00	0.00	7098.2	Sanford J30-650 BHL 2625'FSL, 460'FWL



WELL DETAILS: Sanford J30-650					
		Ground Elevation: 4901.0			
	Northing	Easting	Latitude	Longitude	
0.0	0.0	1378725.64	3193659.68	40.3709200	-104.8049500
Plan: APD - Rev 1 (Sanford J30-650/Original Drilling)					
Created By: Shailey Jewell			Date: 12:57, January 18 2017		
OK to submit with 2A as per Noble Drilling 1/18/2017 1:02					