

T4S, R65W, 6th P.M.

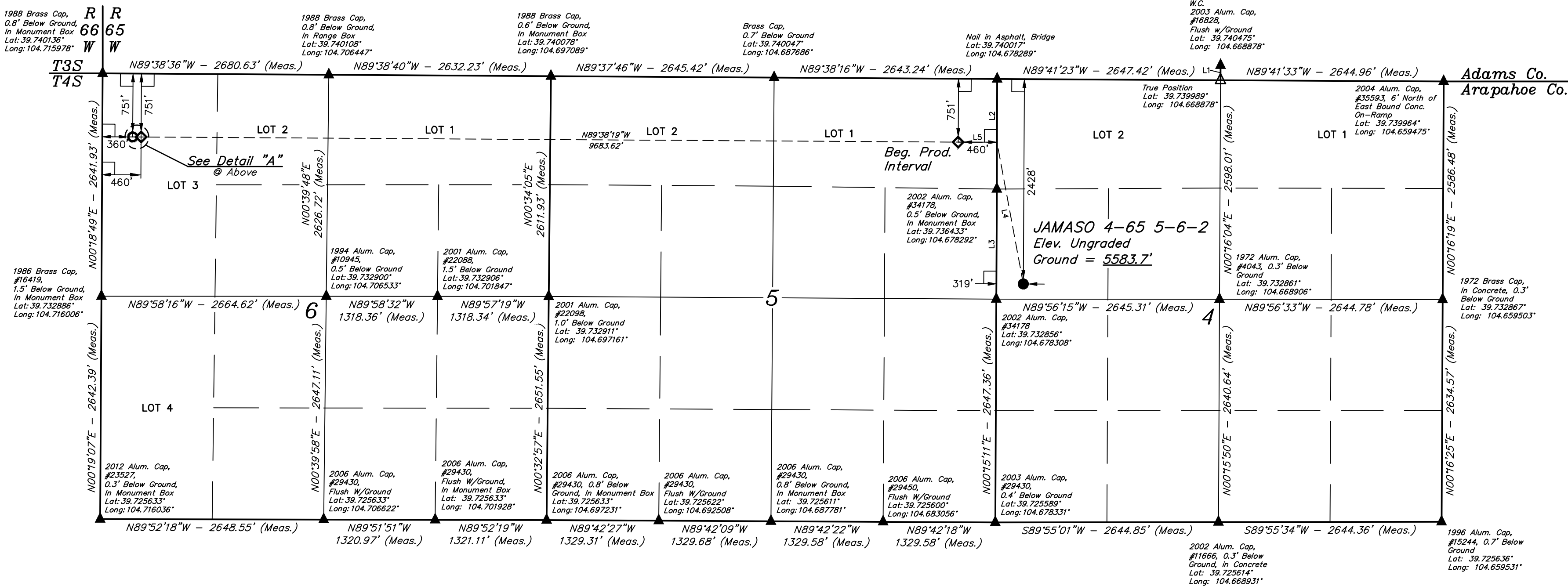
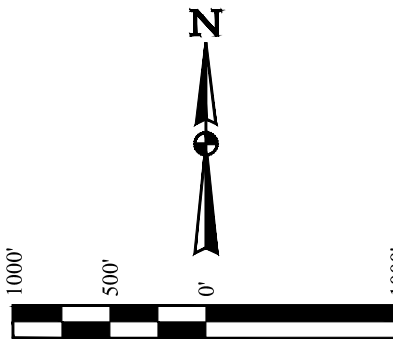
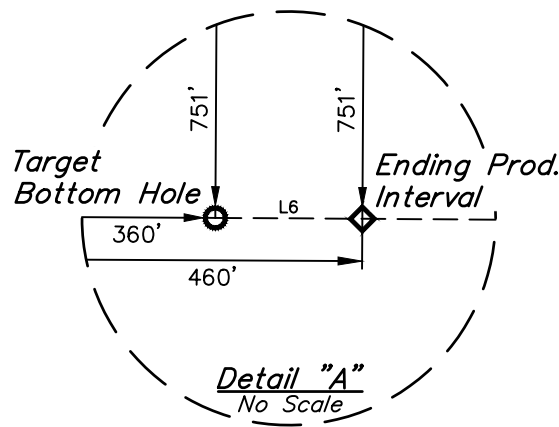
BISON EXPLORATION

JAMASO 4-65 5-6-2
SW 1/4 NW 1/4, SECTION 4, T4S, R65W, 6th P.M.
ARAPAHOE COUNTY, COLORADO

BASIS OF BEARINGS

BASIS OF ELEVATION

BENCHMARK 374 LOCATED ON THE SECTION LINE BETWEEN
SECTIONS 12 & 13, T5S, R64W, 6th P.M., TAKEN FROM 1988
PUBLISHED DATUM BY THE UNITED STATES DEPARTMENT OF
THE INTERIOR, GEOLOGICAL SURVEY AS BEING 6054.61 FEET.



LEGEND:

- 90° SYMBOL
- PROPOSED WELLHEAD.
- PRODUCTION INTERVAL.
- TARGET BOTTOM HOLE.
- SECTION CORNERS LOCATED. (NAD 83)
- SECTION CORNERS RE-ESTABLISHED. (Not Set on Ground.) (NAD 83)

LINE TABLE		
LINE	DIRECTION	LENGTH
L1	N00°05'09"E	177.00'
L2	N00°09'12"E	1304.92'
L3	N00°17'20"E	1304.54'
L4	N10°31'58"W	1707.57'
L5	N89°38'19"W	460.00'
L6	N89°38'19"W	100.00'

PDOP = 1.7

SURFACE LOCATION 2428' ENL 319' FWL	BEG. PROD. INTERVAL 751' ENL 460' FWL	ENDING PROD. INTERVAL 751' ENL 460' FWL	TARGET BOTTOM HOLE 751' ENL 360' FWL
NAD 83 (SURFACE LOCATION) LATITUDE = 39°44'00.06" (39.733350) LONGITUDE = 104°40'37.81" (104.677169)	NAD 83 (BEG. PROD. INTERVAL) LATITUDE = 39°44'16.66" (39.737961) LONGITUDE = 104°40'47.74" (104.679928)	NAD 83 (ENDING PROD. INTERVAL) LATITUDE = 39°44'17.05" (39.738069) LONGITUDE = 104°42'51.66" (104.714350)	NAD 83 (TARGET BOTTOM HOLE) LATITUDE = 39°44'17.06" (39.738072) LONGITUDE = 104°42'52.94" (104.714706)
NAD 27 (SURFACE LOCATION) LATITUDE = 39°44'00.10" (39.733361) LONGITUDE = 104°40'35.92" (104.676644)	NAD 27 (BEG. PROD. INTERVAL) LATITUDE = 39°44'16.70" (39.737972) LONGITUDE = 104°40'45.85" (104.679403)	NAD 27 (ENDING PROD. INTERVAL) LATITUDE = 39°44'17.10" (39.738083) LONGITUDE = 104°42'49.77" (104.713825)	NAD 27 (TARGET BOTTOM HOLE) LATITUDE = 39°44'17.10" (39.738083) LONGITUDE = 104°42'51.05" (104.714181)
STATE PLANE NAD 83 (CO. CEN.) N: 1693050.02 E: 3231416.69	STATE PLANE NAD 83 (CO. CEN.) N: 1694722.63 E: 3230626.32	STATE PLANE NAD 83 (CO. CEN.) N: 1694677.08 E: 3220945.59	STATE PLANE NAD 83 (CO. CEN.) N: 1694676.61 E: 3220845.62
STATE PLANE NAD 27 (CO. CEN.) N: 693042.15 E: 2231570.26	STATE PLANE NAD 27 (CO. CEN.) N: 694714.73 E: 2230779.87	STATE PLANE NAD 27 (CO. CEN.) N: 694669.04 E: 2221099.23	STATE PLANE NAD 27 (CO. CEN.) N: 694668.57 E: 2220999.26

CERTIFICATION
THIS IS TO CERTIFY THAT THE ABOVE DESCRIBED SURVEY WAS MADE IN ACCORDANCE WITH THE RULES AND REGULATIONS OF THE BOARD OF LAND SURVEYORS OF THE STATE OF COLORADO, AND THAT THE SAME ARE TRUE AND CORRECT TO THE BEST OF MY KNOWLEDGE AND BELIEF.

REGISTERED LAND SURVEYOR
REGISTRATION NO. 28285
STATE OF COLORADO



UELLS, LLC
Corporate Office * 85 South 200 East
Vernal, UT 84078 * (435) 789-1017

SURVEYED BY JARED CHRISTOPHER, N.P. 12-27-16 SCALE
DRAWN BY C.C. 01-03-17 1" = 1000'
WELL LOCATION PLAT