

BISON EXPLORATION

**Arapahoe County
Sec 4-T4S-R65W
JAMASO 4-65 5-6-2**

Original Wellbore

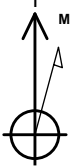
Plan: Proposal 1

Standard Planning Report

20 January, 2017



Project: Arapahoe County
Site: Sec 4-T4S-R65W
Well: JAMASO 4-65 5-6-2
Wellbore: Original Wellbore
Design: Proposal 1



Azimuths to True North
Magnetic North: 8.15°
Magnetic Field
Strength: 52093.1nT
Dip Angle: 66.34°
Date: 1/18/2017
Model: IGRF2015

WELL DETAILS: JAMASO 4-65 5-6-2

										5585.0									
		+N/-S	+E/-W	Northing		Easting		Latitude		Longitude		Slot							
		0.0	0.0	1146787.79		3231416.93		39° 44' 0.060 N		104° 40' 37.810 W									
SECTION DETAILS																			
Sec	MD	Inc	Azi	TVD	+N/-S	+E/-W	Dleg	TFace	VSect	Target									
1	0.0	0.00	0.00	0.0	0.0	0.0	0.00	0.00	0.0										
2	1550.0	0.00	0.00	1550.0	0.0	0.0	0.00	0.00	0.0										
3	2562.8	20.26	349.08	2541.8	174.0	-33.6	2.00	349.08	61.1										
4	6472.4	20.26	349.08	6209.7	1503.0	-289.9	0.00	0.00	528.2										
5	7485.2	0.00	0.00	7201.5	1677.0	-323.5	2.00	180.00	589.3										
6	7687.2	0.00	0.00	7403.5	1677.0	-323.5	0.00	0.00	589.3										
7	8434.1	90.00	270.25	7879.0	1679.1	-799.0	12.05	270.25	1059.0										
8	18191.5	90.00	270.25	7879.0	1722.4	-10556.3	0.00	0.00	10695.9	JAMASO 4-65 5-6-2									

ANNOTATIONS

MD	Inc	Azi	TVD	+N/-S	+E/-W	VSect	Departure	Annotation
1550.0	0.00	0.00	1550.0	0.0	0.0	0.0	0.0	Start Build 2.00
2562.8	20.26	349.08	2541.8	174.0	-33.6	61.1	177.2	Start 3909.6 hold at 2562.8 MD
6472.4	20.26	349.08	6209.7	1503.0	-289.9	528.2	1530.7	Start Drop -2.00
7485.2	0.00	0.00	7201.5	1677.0	-323.5	589.3	1707.9	Start 202.0 hold at 7485.2 MD
7687.2	0.00	0.00	7403.5	1677.0	-323.5	589.3	1707.9	Start Build 12.05
8434.1	90.00	270.25	7879.0	1679.1	-799.0	1059.0	2183.4	Start 9757.4 hold at 8434.1 MD
18191.5	90.00	270.25	7879.0	1722.4	-10556.3	10695.9	11940.8	TD at 18191.5

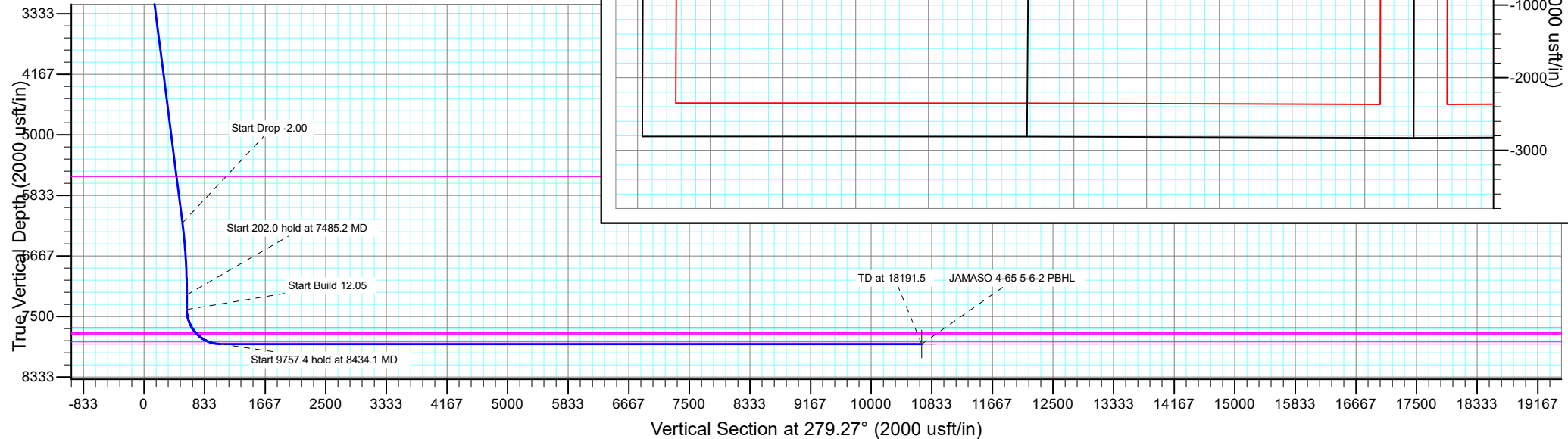
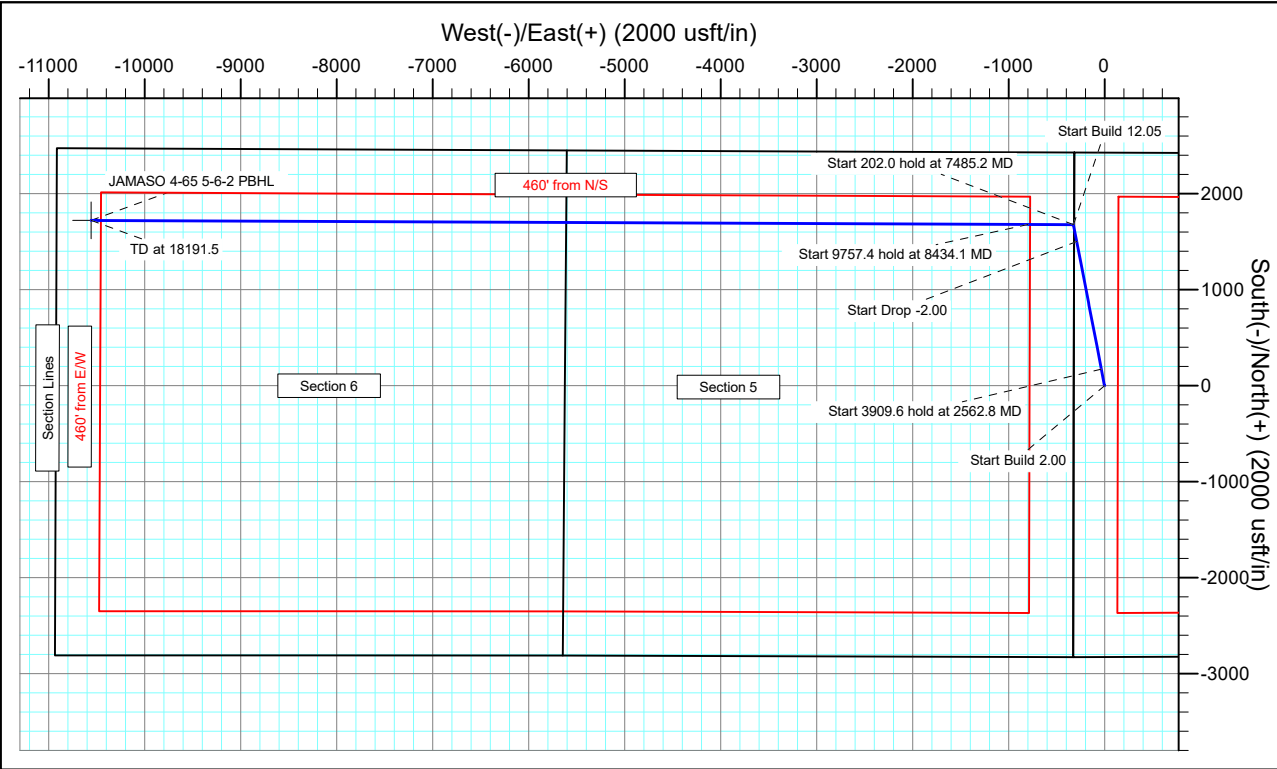
DESIGN TARGET DETAILS

Name	TVD	+N/-S	+E/-W	Northing	Easting	Latitude	Longitude	Shape
JAMASO 4-65 5-6-2 PBHL - plan hits target center	7879.0	1722.4	-10556.3	1148412.16	3220845.14	39° 44' 17.060 N	104° 42' 52.940 W	Point

FORMATION TOP DETAILS		
TVDPath	MDPath	Formation
293.0	293.0	Denver
877.0	877.0	Upper Arapahoe
1165.0	1165.0	Lower Arapahoe
1718.0	1718.1	Laramie - Fox Hills
1970.0	1970.0	Pierre Shale (Base of Fox Hills)
5575.0	5795.0	Shannon Sandstone Member
7655.0	7952.2	Sharon Springs Shale
7720.0	8033.5	Niobrara Formation
7735.0	8054.0	Niobrara A Chalk
7745.0	8068.2	Niobrara A Landing Point
7849.0	8264.3	Niobrara B Chalk
7879.0	8434.1	Niobrara B Landing Point

PROJECT DETAILS: Arapahoe County
Geodetic System: US State Plane 1983
Datum: North American Datum 1983
Ellipsoid: GRS 1980
Zone: Colorado Northern Zone
System Datum: Mean Sea Level

SHL:
2428' FNL, 319' FWL
Sec 4-T4S-R65W
BHL:
751' FNL, 360' FWL
Sec 6-T4S-R65W
LP:
749' FNL, 480' FEL
Sec 5-T4S-R65W



Planning Report

Database:	EDT_32Bit_ODBC	Local Co-ordinate Reference:	Well JAMASO 4-65 5-6-2
Company:	BISON EXPLORATION	TVD Reference:	KB 25' @ 5610.0usft
Project:	Arapahoe County	MD Reference:	KB 25' @ 5610.0usft
Site:	Sec 4-T4S-R65W	North Reference:	True
Well:	JAMASO 4-65 5-6-2	Survey Calculation Method:	Minimum Curvature
Wellbore:	Original Wellbore		
Design:	Proposal 1		

Project	Arapahoe County		
Map System:	US State Plane 1983	System Datum:	Mean Sea Level
Geo Datum:	North American Datum 1983		
Map Zone:	Colorado Northern Zone		

Site		Sec 4-T4S-R65W			
Site Position:		Northing:	1,149,213.35 usft	Latitude:	39° 44' 24.061 N
From:	Lat/Long	Easting:	3,231,079.56 usft	Longitude:	104° 40' 41.840 W
Position Uncertainty:	0.0 usft	Slot Radius:	13.200 in	Grid Convergence:	0.53 °

Well	JAMASO 4-65 5-6-2					
Well Position	+N/-S	-2,428.6 usft	Northing:	1,146,787.79 usft	Latitude:	39° 44' 0.060 N
	+E/-W	314.9 usft	Easting:	3,231,416.93 usft	Longitude:	104° 40' 37.810 W
Position Uncertainty	0.0 usft		Wellhead Elevation:		Ground Level:	5,585.0 usft

Wellbore	Original Wellbore				
Magnetics	Model Name	Sample Date	Declination (°)	Dip Angle (°)	Field Strength (nT)
	IGRF2015	1/18/2017	8.15	66.34	52,093.11582289

Design	Proposal 1			
Audit Notes:				
Version:	Phase:	PROTOTYPE	Tie On Depth:	0.0
Vertical Section:	Depth From (TVD) (usft)	+N/-S (usft)	+E/-W (usft)	Direction (°)
	0.0	0.0	0.0	279.27

Plan Survey Tool Program	Date	1/20/2017		
Depth From (usft)	Depth To (usft)	Survey (Wellbore)	Tool Name	Remarks
1	0.0	18,191.5	Proposal 1 (Original Wellbore)	MWD
				OWSG MWD - Standard

Plan Sections										
Measured Depth (usft)	Inclination (°)	Azimuth (°)	Vertical Depth (usft)	+N/-S (usft)	+E/-W (usft)	Dogleg Rate (°/100ft)	Build Rate (°/100ft)	Turn Rate (°/100ft)	TFO (°)	Target
0.0	0.00	0.00	0.0	0.0	0.0	0.00	0.00	0.00	0.00	
1,550.0	0.00	0.00	1,550.0	0.0	0.0	0.00	0.00	0.00	0.00	
2,562.8	20.26	349.08	2,541.8	174.0	-33.6	2.00	2.00	0.00	349.08	
6,472.4	20.26	349.08	6,209.7	1,503.0	-289.9	0.00	0.00	0.00	0.00	
7,485.2	0.00	0.00	7,201.5	1,677.0	-323.5	2.00	-2.00	0.00	180.00	
7,687.2	0.00	0.00	7,403.5	1,677.0	-323.5	0.00	0.00	0.00	0.00	
8,434.1	90.00	270.25	7,879.0	1,679.1	-799.0	12.05	12.05	0.00	270.25	
18,191.5	90.00	270.25	7,879.0	1,722.4	-10,556.3	0.00	0.00	0.00	0.00	JAMASO 4-65 5-6-2 F

Planning Report

Database:	EDT_32Bit_ODBC	Local Co-ordinate Reference:	Well JAMASO 4-65 5-6-2
Company:	BISON EXPLORATION	TVD Reference:	KB 25' @ 5610.0usft
Project:	Arapahoe County	MD Reference:	KB 25' @ 5610.0usft
Site:	Sec 4-T4S-R65W	North Reference:	True
Well:	JAMASO 4-65 5-6-2	Survey Calculation Method:	Minimum Curvature
Wellbore:	Original Wellbore		
Design:	Proposal 1		

Planned Survey									
Measured Depth (usft)	Inclination (°)	Azimuth (°)	Vertical Depth (usft)	+N/-S (usft)	+E/-W (usft)	Vertical Section (usft)	Dogleg Rate (°/100ft)	Build Rate (°/100ft)	Turn Rate (°/100ft)
0.0	0.00	0.00	0.0	0.0	0.0	0.0	0.00	0.00	0.00
100.0	0.00	0.00	100.0	0.0	0.0	0.0	0.00	0.00	0.00
200.0	0.00	0.00	200.0	0.0	0.0	0.0	0.00	0.00	0.00
293.0	0.00	0.00	293.0	0.0	0.0	0.0	0.00	0.00	0.00
Denver									
300.0	0.00	0.00	300.0	0.0	0.0	0.0	0.00	0.00	0.00
400.0	0.00	0.00	400.0	0.0	0.0	0.0	0.00	0.00	0.00
500.0	0.00	0.00	500.0	0.0	0.0	0.0	0.00	0.00	0.00
600.0	0.00	0.00	600.0	0.0	0.0	0.0	0.00	0.00	0.00
700.0	0.00	0.00	700.0	0.0	0.0	0.0	0.00	0.00	0.00
800.0	0.00	0.00	800.0	0.0	0.0	0.0	0.00	0.00	0.00
877.0	0.00	0.00	877.0	0.0	0.0	0.0	0.00	0.00	0.00
Upper Arapahoe									
900.0	0.00	0.00	900.0	0.0	0.0	0.0	0.00	0.00	0.00
1,000.0	0.00	0.00	1,000.0	0.0	0.0	0.0	0.00	0.00	0.00
1,100.0	0.00	0.00	1,100.0	0.0	0.0	0.0	0.00	0.00	0.00
1,165.0	0.00	0.00	1,165.0	0.0	0.0	0.0	0.00	0.00	0.00
Lower Arapahoe									
1,200.0	0.00	0.00	1,200.0	0.0	0.0	0.0	0.00	0.00	0.00
1,300.0	0.00	0.00	1,300.0	0.0	0.0	0.0	0.00	0.00	0.00
1,400.0	0.00	0.00	1,400.0	0.0	0.0	0.0	0.00	0.00	0.00
1,500.0	0.00	0.00	1,500.0	0.0	0.0	0.0	0.00	0.00	0.00
1,550.0	0.00	0.00	1,550.0	0.0	0.0	0.0	0.00	0.00	0.00
Start Build 2.00									
1,600.0	1.00	349.08	1,600.0	0.4	-0.1	0.2	2.00	2.00	0.00
1,700.0	3.00	349.08	1,699.9	3.9	-0.7	1.4	2.00	2.00	0.00
1,718.1	3.36	349.08	1,718.0	4.8	-0.9	1.7	2.00	2.00	0.00
Laramie - Fox Hills									
1,800.0	5.00	349.08	1,799.7	10.7	-2.1	3.8	2.00	2.00	0.00
1,900.0	7.00	349.08	1,899.1	21.0	-4.0	7.4	2.00	2.00	0.00
1,971.5	8.43	349.08	1,970.0	30.4	-5.9	10.7	2.00	2.00	0.00
Pierre Shale (Base of Fox Hills)									
2,000.0	9.00	349.08	1,998.2	34.6	-6.7	12.2	2.00	2.00	0.00
2,100.0	11.00	349.08	2,096.6	51.7	-10.0	18.2	2.00	2.00	0.00
2,200.0	13.00	349.08	2,194.4	72.1	-13.9	25.3	2.00	2.00	0.00
2,300.0	15.00	349.08	2,291.5	95.8	-18.5	33.7	2.00	2.00	0.00
2,400.0	17.00	349.08	2,387.6	122.9	-23.7	43.2	2.00	2.00	0.00
2,500.0	19.00	349.08	2,482.7	153.3	-29.6	53.9	2.00	2.00	0.00
2,562.8	20.26	349.08	2,541.8	174.0	-33.6	61.1	2.00	2.00	0.00
Start 3909.6 hold at 2562.8 MD									
2,600.0	20.26	349.08	2,576.7	186.6	-36.0	65.6	0.00	0.00	0.00
2,700.0	20.26	349.08	2,670.5	220.6	-42.6	77.5	0.00	0.00	0.00
2,800.0	20.26	349.08	2,764.4	254.6	-49.1	89.5	0.00	0.00	0.00
2,900.0	20.26	349.08	2,858.2	288.6	-55.7	101.4	0.00	0.00	0.00
3,000.0	20.26	349.08	2,952.0	322.6	-62.2	113.4	0.00	0.00	0.00
3,100.0	20.26	349.08	3,045.8	356.6	-68.8	125.3	0.00	0.00	0.00
3,200.0	20.26	349.08	3,139.6	390.6	-75.3	137.3	0.00	0.00	0.00
3,300.0	20.26	349.08	3,233.4	424.6	-81.9	149.2	0.00	0.00	0.00
3,400.0	20.26	349.08	3,327.3	458.6	-88.5	161.2	0.00	0.00	0.00
3,500.0	20.26	349.08	3,421.1	492.6	-95.0	173.1	0.00	0.00	0.00
3,600.0	20.26	349.08	3,514.9	526.6	-101.6	185.0	0.00	0.00	0.00
3,700.0	20.26	349.08	3,608.7	560.6	-108.1	197.0	0.00	0.00	0.00
3,800.0	20.26	349.08	3,702.5	594.5	-114.7	208.9	0.00	0.00	0.00

Planning Report

Database:	EDT_32Bit_ODBC	Local Co-ordinate Reference:	Well JAMASO 4-65 5-6-2
Company:	BISON EXPLORATION	TVD Reference:	KB 25' @ 5610.0usft
Project:	Arapahoe County	MD Reference:	KB 25' @ 5610.0usft
Site:	Sec 4-T4S-R65W	North Reference:	True
Well:	JAMASO 4-65 5-6-2	Survey Calculation Method:	Minimum Curvature
Wellbore:	Original Wellbore		
Design:	Proposal 1		

Planned Survey									
Measured Depth (usft)	Inclination (°)	Azimuth (°)	Vertical Depth (usft)	+N/-S (usft)	+E/-W (usft)	Vertical Section (usft)	Dogleg Rate (°/100ft)	Build Rate (°/100ft)	Turn Rate (°/100ft)
3,900.0	20.26	349.08	3,796.3	628.5	-121.2	220.9	0.00	0.00	0.00
4,000.0	20.26	349.08	3,890.2	662.5	-127.8	232.8	0.00	0.00	0.00
4,100.0	20.26	349.08	3,984.0	696.5	-134.4	244.8	0.00	0.00	0.00
4,200.0	20.26	349.08	4,077.8	730.5	-140.9	256.7	0.00	0.00	0.00
4,300.0	20.26	349.08	4,171.6	764.5	-147.5	268.7	0.00	0.00	0.00
4,400.0	20.26	349.08	4,265.4	798.5	-154.0	280.6	0.00	0.00	0.00
4,500.0	20.26	349.08	4,359.2	832.5	-160.6	292.6	0.00	0.00	0.00
4,600.0	20.26	349.08	4,453.0	866.5	-167.2	304.5	0.00	0.00	0.00
4,700.0	20.26	349.08	4,546.9	900.5	-173.7	316.5	0.00	0.00	0.00
4,800.0	20.26	349.08	4,640.7	934.5	-180.3	328.4	0.00	0.00	0.00
4,900.0	20.26	349.08	4,734.5	968.5	-186.8	340.3	0.00	0.00	0.00
5,000.0	20.26	349.08	4,828.3	1,002.5	-193.4	352.3	0.00	0.00	0.00
5,100.0	20.26	349.08	4,922.1	1,036.5	-199.9	364.2	0.00	0.00	0.00
5,200.0	20.26	349.08	5,015.9	1,070.5	-206.5	376.2	0.00	0.00	0.00
5,300.0	20.26	349.08	5,109.8	1,104.5	-213.1	388.1	0.00	0.00	0.00
5,400.0	20.26	349.08	5,203.6	1,138.5	-219.6	400.1	0.00	0.00	0.00
5,500.0	20.26	349.08	5,297.4	1,172.5	-226.2	412.0	0.00	0.00	0.00
5,600.0	20.26	349.08	5,391.2	1,206.5	-232.7	424.0	0.00	0.00	0.00
5,700.0	20.26	349.08	5,485.0	1,240.5	-239.3	435.9	0.00	0.00	0.00
5,795.9	20.26	349.08	5,575.0	1,273.1	-245.6	447.4	0.00	0.00	0.00
Shannon Sandstone Member									
5,800.0	20.26	349.08	5,578.8	1,274.4	-245.8	447.9	0.00	0.00	0.00
5,900.0	20.26	349.08	5,672.6	1,308.4	-252.4	459.8	0.00	0.00	0.00
6,000.0	20.26	349.08	5,766.5	1,342.4	-259.0	471.8	0.00	0.00	0.00
6,100.0	20.26	349.08	5,860.3	1,376.4	-265.5	483.7	0.00	0.00	0.00
6,200.0	20.26	349.08	5,954.1	1,410.4	-272.1	495.7	0.00	0.00	0.00
6,300.0	20.26	349.08	6,047.9	1,444.4	-278.6	507.6	0.00	0.00	0.00
6,400.0	20.26	349.08	6,141.7	1,478.4	-285.2	519.5	0.00	0.00	0.00
6,472.4	20.26	349.08	6,209.7	1,503.0	-289.9	528.2	0.00	0.00	0.00
Start Drop -2.00									
6,500.0	19.70	349.08	6,235.6	1,512.3	-291.7	531.4	2.00	-2.00	0.00
6,600.0	17.70	349.08	6,330.3	1,543.8	-297.8	542.5	2.00	-2.00	0.00
6,700.0	15.70	349.08	6,426.1	1,572.0	-303.2	552.4	2.00	-2.00	0.00
6,800.0	13.70	349.08	6,522.8	1,596.9	-308.1	561.2	2.00	-2.00	0.00
6,900.0	11.70	349.08	6,620.3	1,618.5	-312.2	568.8	2.00	-2.00	0.00
7,000.0	9.70	349.08	6,718.6	1,636.7	-315.7	575.2	2.00	-2.00	0.00
7,100.0	7.70	349.08	6,817.4	1,651.6	-318.6	580.4	2.00	-2.00	0.00
7,200.0	5.70	349.08	6,916.7	1,663.1	-320.8	584.4	2.00	-2.00	0.00
7,300.0	3.70	349.08	7,016.4	1,671.1	-322.4	587.3	2.00	-2.00	0.00
7,400.0	1.70	349.08	7,116.3	1,675.8	-323.3	588.9	2.00	-2.00	0.00
7,485.2	0.00	0.00	7,201.5	1,677.0	-323.5	589.3	2.00	-2.00	12.81
Start 202.0 hold at 7485.2 MD									
7,500.0	0.00	0.00	7,216.3	1,677.0	-323.5	589.3	0.00	0.00	0.00
7,600.0	0.00	0.00	7,316.3	1,677.0	-323.5	589.3	0.00	0.00	0.00
7,687.2	0.00	0.00	7,403.5	1,677.0	-323.5	589.3	0.00	0.00	0.00
Start Build 12.05									
7,700.0	1.54	270.25	7,416.3	1,677.0	-323.7	589.5	12.05	12.05	0.00
7,725.0	4.55	270.25	7,441.2	1,677.0	-325.0	590.8	12.05	12.05	0.00
7,750.0	7.56	270.25	7,466.1	1,677.0	-327.6	593.4	12.05	12.05	0.00
7,775.0	10.58	270.25	7,490.8	1,677.0	-331.6	597.3	12.05	12.05	0.00
7,800.0	13.59	270.25	7,515.2	1,677.1	-336.8	602.5	12.05	12.05	0.00
7,825.0	16.60	270.25	7,539.4	1,677.1	-343.3	608.9	12.05	12.05	0.00
7,850.0	19.61	270.25	7,563.1	1,677.1	-351.1	616.6	12.05	12.05	0.00

Planning Report

Database:	EDT_32Bit_ODBC	Local Co-ordinate Reference:	Well JAMASO 4-65 5-6-2
Company:	BISON EXPLORATION	TVD Reference:	KB 25' @ 5610.0usft
Project:	Arapahoe County	MD Reference:	KB 25' @ 5610.0usft
Site:	Sec 4-T4S-R65W	North Reference:	True
Well:	JAMASO 4-65 5-6-2	Survey Calculation Method:	Minimum Curvature
Wellbore:	Original Wellbore		
Design:	Proposal 1		

Planned Survey									
Measured Depth (usft)	Inclination (°)	Azimuth (°)	Vertical Depth (usft)	+N/-S (usft)	+E/-W (usft)	Vertical Section (usft)	Dogleg Rate (°/100ft)	Build Rate (°/100ft)	Turn Rate (°/100ft)
7,875.0	22.63	270.25	7,586.4	1,677.2	-360.1	625.5	12.05	12.05	0.00
7,900.0	25.64	270.25	7,609.2	1,677.2	-370.3	635.6	12.05	12.05	0.00
7,925.0	28.65	270.25	7,631.5	1,677.3	-381.7	646.8	12.05	12.05	0.00
7,950.0	31.66	270.25	7,653.1	1,677.3	-394.3	659.2	12.05	12.05	0.00
7,952.2	31.93	270.25	7,655.0	1,677.3	-395.5	660.4	12.05	12.05	0.00
Sharon Springs Shale									
7,975.0	34.68	270.25	7,674.0	1,677.4	-408.0	672.7	12.05	12.05	0.00
8,000.0	37.69	270.25	7,694.2	1,677.4	-422.7	687.3	12.05	12.05	0.00
8,025.0	40.70	270.25	7,713.6	1,677.5	-438.5	702.9	12.05	12.05	0.00
8,033.5	41.73	270.25	7,720.0	1,677.5	-444.1	708.5	12.05	12.05	0.00
Niobrara Formation									
8,050.0	43.71	270.25	7,732.1	1,677.6	-455.3	719.5	12.05	12.05	0.00
8,054.0	44.20	270.25	7,735.0	1,677.6	-458.1	722.3	12.05	12.05	0.00
Niobrara A Chalk									
8,068.2	45.91	270.25	7,745.0	1,677.6	-468.1	732.2	12.05	12.05	0.00
Niobrara A Landing Point									
8,075.0	46.73	270.25	7,749.7	1,677.7	-473.0	737.0	12.05	12.05	0.00
8,100.0	49.74	270.25	7,766.4	1,677.7	-491.7	755.4	12.05	12.05	0.00
8,125.0	52.75	270.25	7,782.0	1,677.8	-511.2	774.7	12.05	12.05	0.00
8,150.0	55.76	270.25	7,796.6	1,677.9	-531.5	794.7	12.05	12.05	0.00
8,175.0	58.78	270.25	7,810.1	1,678.0	-552.5	815.5	12.05	12.05	0.00
8,200.0	61.79	270.25	7,822.5	1,678.1	-574.2	836.9	12.05	12.05	0.00
8,225.0	64.80	270.25	7,833.7	1,678.2	-596.5	859.0	12.05	12.05	0.00
8,250.0	67.81	270.25	7,843.8	1,678.3	-619.4	881.6	12.05	12.05	0.00
8,264.3	69.54	270.25	7,849.0	1,678.4	-632.8	894.8	12.05	12.05	0.00
Niobrara B Chalk									
8,275.0	70.82	270.25	7,852.6	1,678.4	-642.8	904.7	12.05	12.05	0.00
8,300.0	73.84	270.25	7,860.2	1,678.5	-666.6	928.2	12.05	12.05	0.00
8,325.0	76.85	270.25	7,866.5	1,678.6	-690.8	952.1	12.05	12.05	0.00
8,350.0	79.86	270.25	7,871.6	1,678.7	-715.3	976.3	12.05	12.05	0.00
8,375.0	82.87	270.25	7,875.3	1,678.8	-740.0	1,000.7	12.05	12.05	0.00
8,400.0	85.89	270.25	7,877.8	1,679.0	-764.9	1,025.3	12.05	12.05	0.00
8,425.0	88.90	270.25	7,878.9	1,679.1	-789.9	1,049.9	12.05	12.05	0.00
8,434.1	90.00	270.25	7,879.0	1,679.1	-799.0	1,059.0	12.05	12.05	0.00
Start 9757.4 hold at 8434.1 MD - Niobrara B Landing Point									
8,500.0	90.00	270.25	7,879.0	1,679.4	-864.9	1,124.0	0.00	0.00	0.00
8,600.0	90.00	270.25	7,879.0	1,679.8	-964.9	1,222.8	0.00	0.00	0.00
8,700.0	90.00	270.25	7,879.0	1,680.3	-1,064.9	1,321.5	0.00	0.00	0.00
8,800.0	90.00	270.25	7,879.0	1,680.7	-1,164.9	1,420.3	0.00	0.00	0.00
8,900.0	90.00	270.25	7,879.0	1,681.2	-1,264.9	1,519.1	0.00	0.00	0.00
9,000.0	90.00	270.25	7,879.0	1,681.6	-1,364.9	1,617.8	0.00	0.00	0.00
9,100.0	90.00	270.25	7,879.0	1,682.1	-1,464.9	1,716.6	0.00	0.00	0.00
9,200.0	90.00	270.25	7,879.0	1,682.5	-1,564.9	1,815.4	0.00	0.00	0.00
9,300.0	90.00	270.25	7,879.0	1,683.0	-1,664.9	1,914.1	0.00	0.00	0.00
9,400.0	90.00	270.25	7,879.0	1,683.4	-1,764.8	2,012.9	0.00	0.00	0.00
9,500.0	90.00	270.25	7,879.0	1,683.8	-1,864.8	2,111.7	0.00	0.00	0.00
9,600.0	90.00	270.25	7,879.0	1,684.3	-1,964.8	2,210.4	0.00	0.00	0.00
9,700.0	90.00	270.25	7,879.0	1,684.7	-2,064.8	2,309.2	0.00	0.00	0.00
9,800.0	90.00	270.25	7,879.0	1,685.2	-2,164.8	2,408.0	0.00	0.00	0.00
9,900.0	90.00	270.25	7,879.0	1,685.6	-2,264.8	2,506.7	0.00	0.00	0.00
10,000.0	90.00	270.25	7,879.0	1,686.1	-2,364.8	2,605.5	0.00	0.00	0.00
10,100.0	90.00	270.25	7,879.0	1,686.5	-2,464.8	2,704.3	0.00	0.00	0.00
10,200.0	90.00	270.25	7,879.0	1,686.9	-2,564.8	2,803.0	0.00	0.00	0.00

Planning Report

Database:	EDT_32Bit_ODBC	Local Co-ordinate Reference:	Well JAMASO 4-65 5-6-2
Company:	BISON EXPLORATION	TVD Reference:	KB 25' @ 5610.0usft
Project:	Arapahoe County	MD Reference:	KB 25' @ 5610.0usft
Site:	Sec 4-T4S-R65W	North Reference:	True
Well:	JAMASO 4-65 5-6-2	Survey Calculation Method:	Minimum Curvature
Wellbore:	Original Wellbore		
Design:	Proposal 1		

Planned Survey										
Measured Depth (usft)	Inclination (°)	Azimuth (°)	Vertical Depth (usft)	+N/-S (usft)	+E/-W (usft)	Vertical Section (usft)	Dogleg Rate (°/100ft)	Build Rate (°/100ft)	Turn Rate (°/100ft)	
10,300.0	90.00	270.25	7,879.0	1,687.4	-2,664.8	2,901.8	0.00	0.00	0.00	
10,400.0	90.00	270.25	7,879.0	1,687.8	-2,764.8	3,000.6	0.00	0.00	0.00	
10,500.0	90.00	270.25	7,879.0	1,688.3	-2,864.8	3,099.3	0.00	0.00	0.00	
10,600.0	90.00	270.25	7,879.0	1,688.7	-2,964.8	3,198.1	0.00	0.00	0.00	
10,700.0	90.00	270.25	7,879.0	1,689.2	-3,064.8	3,296.8	0.00	0.00	0.00	
10,800.0	90.00	270.25	7,879.0	1,689.6	-3,164.8	3,395.6	0.00	0.00	0.00	
10,900.0	90.00	270.25	7,879.0	1,690.0	-3,264.8	3,494.4	0.00	0.00	0.00	
11,000.0	90.00	270.25	7,879.0	1,690.5	-3,364.8	3,593.1	0.00	0.00	0.00	
11,100.0	90.00	270.25	7,879.0	1,690.9	-3,464.8	3,691.9	0.00	0.00	0.00	
11,200.0	90.00	270.25	7,879.0	1,691.4	-3,564.8	3,790.7	0.00	0.00	0.00	
11,300.0	90.00	270.25	7,879.0	1,691.8	-3,664.8	3,889.4	0.00	0.00	0.00	
11,400.0	90.00	270.25	7,879.0	1,692.3	-3,764.8	3,988.2	0.00	0.00	0.00	
11,500.0	90.00	270.25	7,879.0	1,692.7	-3,864.8	4,087.0	0.00	0.00	0.00	
11,600.0	90.00	270.25	7,879.0	1,693.2	-3,964.8	4,185.7	0.00	0.00	0.00	
11,700.0	90.00	270.25	7,879.0	1,693.6	-4,064.8	4,284.5	0.00	0.00	0.00	
11,800.0	90.00	270.25	7,879.0	1,694.0	-4,164.8	4,383.3	0.00	0.00	0.00	
11,900.0	90.00	270.25	7,879.0	1,694.5	-4,264.8	4,482.0	0.00	0.00	0.00	
12,000.0	90.00	270.25	7,879.0	1,694.9	-4,364.8	4,580.8	0.00	0.00	0.00	
12,100.0	90.00	270.25	7,879.0	1,695.4	-4,464.8	4,679.6	0.00	0.00	0.00	
12,200.0	90.00	270.25	7,879.0	1,695.8	-4,564.8	4,778.3	0.00	0.00	0.00	
12,300.0	90.00	270.25	7,879.0	1,696.3	-4,664.8	4,877.1	0.00	0.00	0.00	
12,400.0	90.00	270.25	7,879.0	1,696.7	-4,764.8	4,975.9	0.00	0.00	0.00	
12,500.0	90.00	270.25	7,879.0	1,697.1	-4,864.8	5,074.6	0.00	0.00	0.00	
12,600.0	90.00	270.25	7,879.0	1,697.6	-4,964.8	5,173.4	0.00	0.00	0.00	
12,700.0	90.00	270.25	7,879.0	1,698.0	-5,064.8	5,272.2	0.00	0.00	0.00	
18,191.5	90.00	270.25	7,879.0	1,722.4	-10,556.3	10,695.9	0.00	0.00	0.00	
TD at 18191.5 - JAMASO 4-65 5-6-2 PBHL										

Design Targets									
Target Name	Dip Angle (°)	Dip Dir. (°)	TVD (usft)	+N/-S (usft)	+E/-W (usft)	Northing (usft)	Easting (usft)	Latitude	Longitude
JAMASO 4-65 5-6-2 PBI	0.00	0.00	7,879.0	1,722.4	-10,556.3	1,148,412.16	3,220,845.14	39° 44' 17.060 N	104° 42' 52.940 W
- hit/miss target									
- Shape									
- plan hits target center									
- Point									

Planning Report

Database:	EDT_32Bit_ODBC	Local Co-ordinate Reference:	Well JAMASO 4-65 5-6-2
Company:	BISON EXPLORATION	TVD Reference:	KB 25' @ 5610.0usft
Project:	Arapahoe County	MD Reference:	KB 25' @ 5610.0usft
Site:	Sec 4-T4S-R65W	North Reference:	True
Well:	JAMASO 4-65 5-6-2	Survey Calculation Method:	Minimum Curvature
Wellbore:	Original Wellbore		
Design:	Proposal 1		

Formations						
Measured Depth (usft)	Vertical Depth (usft)	Name	Lithology	Dip (°)	Dip Direction (°)	
293.0	293.0	Denver				
877.0	877.0	Upper Arapahoe				
1,165.0	1,165.0	Lower Arapahoe				
1,718.1	1,718.0	Laramie - Fox Hills				
1,971.5	1,970.0	Pierre Shale (Base of Fox Hills)				
5,795.9	5,575.0	Shannon Sandstone Member				
7,952.2	7,655.0	Sharon Springs Shale				
8,033.5	7,720.0	Niobrara Formation				
8,054.0	7,735.0	Niobrara A Chalk				
8,068.2	7,745.0	Niobrara A Landing Point				
8,264.3	7,849.0	Niobrara B Chalk				
8,434.1	7,879.0	Niobrara B Landing Point				

Plan Annotations					
Measured Depth (usft)	Vertical Depth (usft)	Local Coordinates			
		+N/-S (usft)	+E/-W (usft)	Comment	
1,550.0	1,550.0	0.0	0.0	Start Build 2.00	
2,562.8	2,541.8	174.0	-33.6	Start 3909.6 hold at 2562.8 MD	
6,472.4	6,209.7	1,503.0	-289.9	Start Drop -2.00	
7,485.2	7,201.5	1,677.0	-323.5	Start 202.0 hold at 7485.2 MD	
7,687.2	7,403.5	1,677.0	-323.5	Start Build 12.05	
8,434.1	7,879.0	1,679.1	-799.0	Start 9757.4 hold at 8434.1 MD	
18,191.5	7,879.0	1,722.4	-10,556.3	TD at 18191.5	