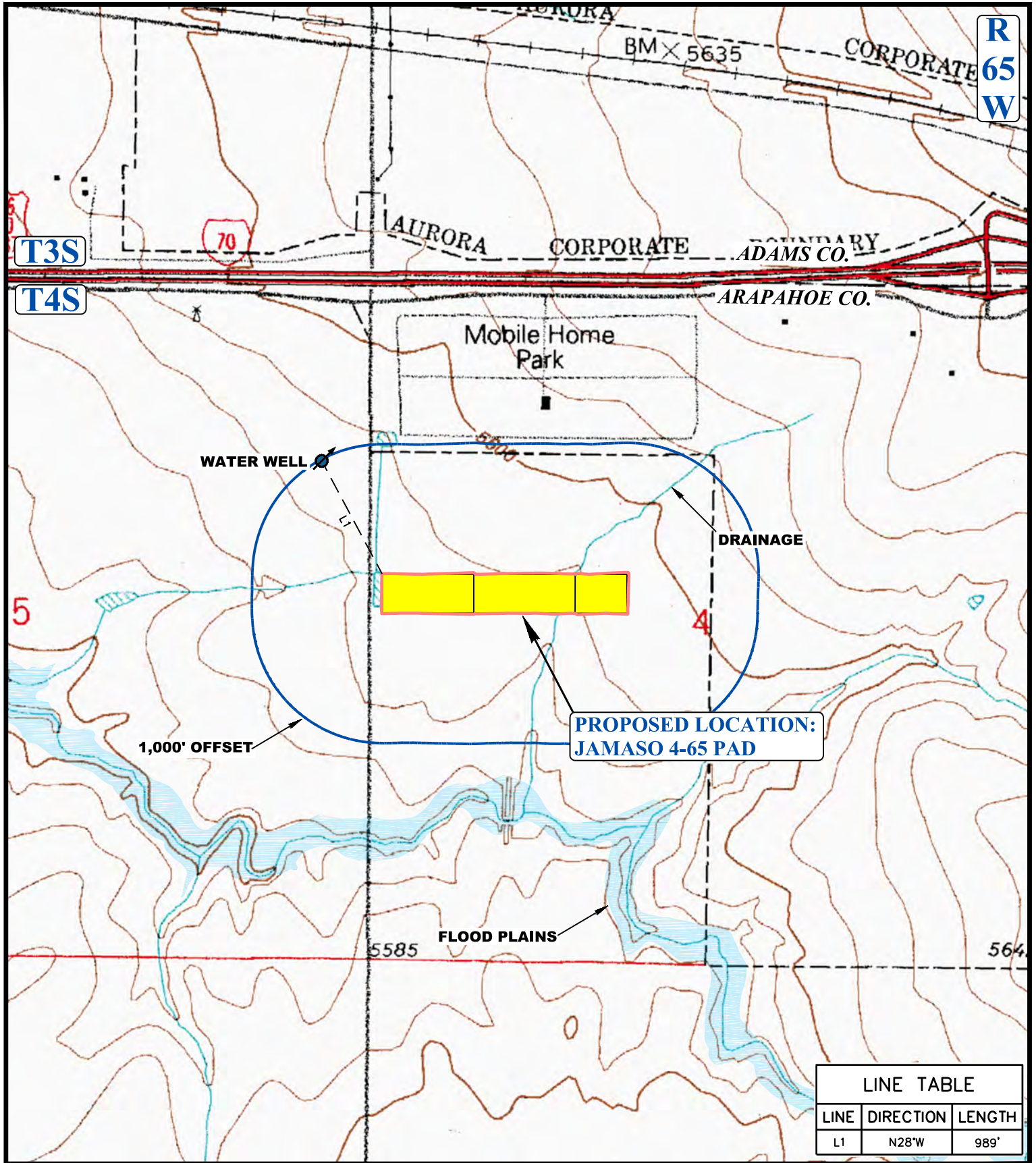


R  
65  
W

T3S





T4S



**PROPOSED LOCATION:  
JAMASO 4-65 PAD**

LINE TABLE		
LINE	DIRECTION	LENGTH
L1	N28°W	989'

**LEGEND:**

-  1000' OFFSET BOUNDARY
-  EDGE OF DISTURBANCE
-  WATER WELLS
-  FLOOD PLAINS



**UELS, LLC**  
 Corporate Office \* 85 South 200 East  
 Vernal, UT 84078 \* (435) 789-1017



**BISON OIL & GAS**

**JAMASO 4-65 PAD**  
 SW 1/4 NW 1/4, SECTION 4, T4S, R65W, 6th P.M.  
 ARAPAHOE COUNTY, COLORADO

SURVEYED BY	J.C., N.P.	12-27-16	SCALE
DRAWN BY	J.L.G.	01-04-17	1 : 6,000
<b>HYDROLOGY MAP</b>		<b>TOPO W</b>	