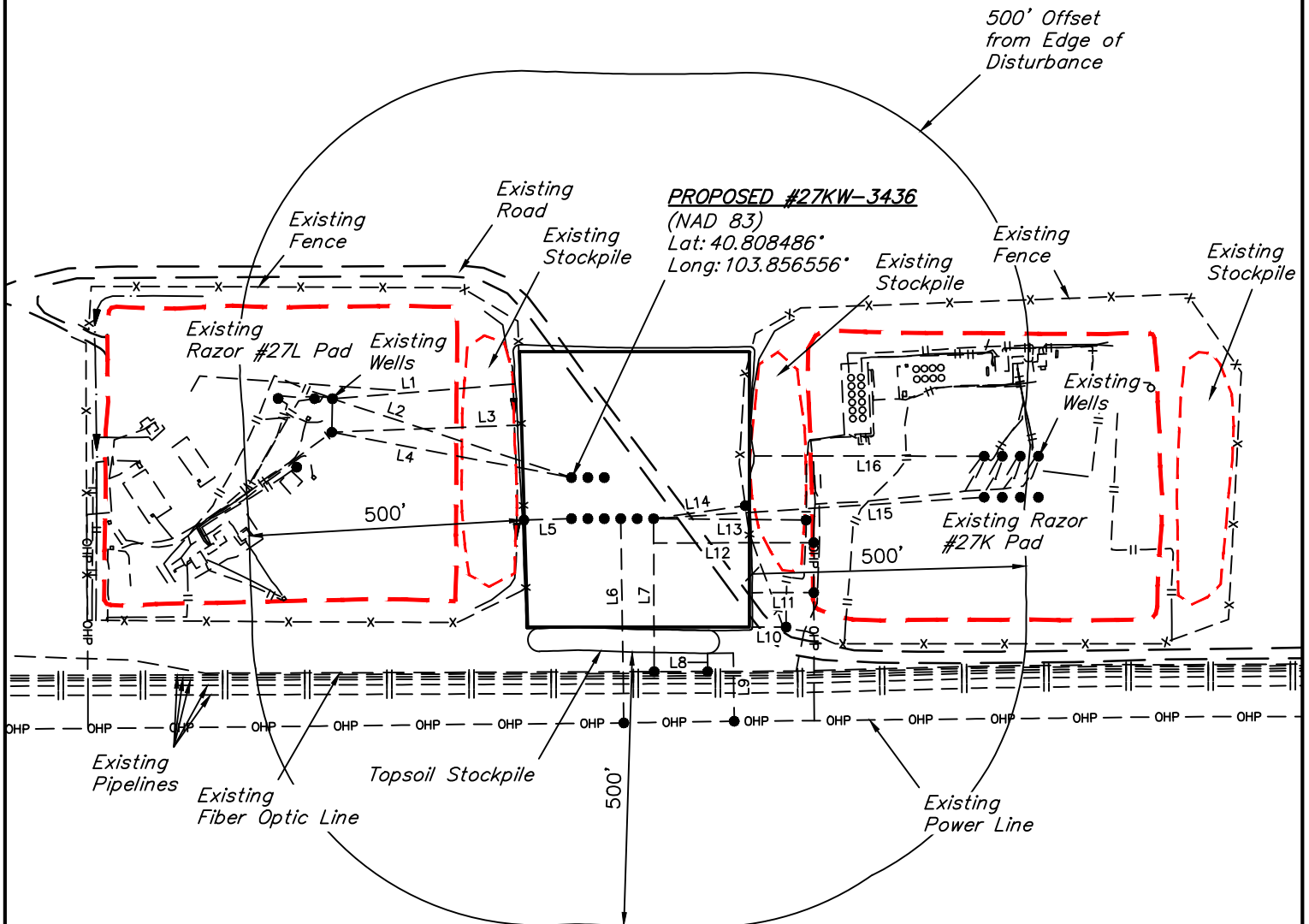


LINE TABLE		
LINE	DIRECTION	LENGTH
L1	S85°W	335'
L2	N72°W	460'
L3	S88°W	340'
L4	N79°W	446'
L5	S88°W	87'
L6	S01°E	373'
L7	SOUTH	279'
L8	SOUTH	33'

LINE TABLE		
LINE	DIRECTION	LENGTH
L9	S01°E	124'
L10	EAST	62'
L11	EAST	113'
L12	EAST	292'
L13	S89°E	279'
L14	N82°E	169'
L15	N86°E	605'
L16	EAST	420'



## WHITING OIL & GAS CORP.

RAZOR #27KW-3436, 3437, 3438, 2236, 2204, 2237,  
RAZOR FED #27KW-2238, 2205 & 2206  
NW 1/4 SW 1/4, SECTION 27, T10N, R58W, 6th P.M.  
WELD COUNTY, COLORADO

SURVEYED BY: GREG WEIMER, C.J. SURVEY DATE: 11-24-15

DRAWN BY: C.C.

DATE DRAWN: 12-07-15

SCALE: 1" = 300'

REVISED: 00-00-00

**LOCATION DRAWING**



**UELS, LLC**  
Corporate Office \* 85 South 200 East  
Vernal, UT 84078 \* (435) 789-1017