



PDSI
27610 Commerce Oaks Drive
Oak Ridge North, TX 77285

DL1737

5":100' - MD
6/7/2013 4:49:48 AM

Oper. Company: Bill Barrett Corporation
Country: USA
State / Province: Colorado
County / Parish: Weld County
Started: 05/29/2013 03:00 PM

API/UWI: 05-123-36898
Field: NE Wattenburg
Well: CVR-5-63-32-3225 CH
Rig: Nabors M-37
Ended: 06/07/2013 04:30 AM

Personnel

Day Hand: David Rask
Night Hand: Joshua Adair
Comp. Emp: PDSI

Location

Latitude: 48° 21' 21" N
Longitude: 104° 28' 5" W
Elev. GL: 4,578'
Elev. DF: 23'
Elev. KB: 23'

Hole Data

Size	From	To
13 1/2"	0	841
8 3/4"	841	6615
6 1/8"	6615	11040

Casing Data

Size	From	To
9 5/8"	0	841
7"	0	6853

Bit Sizes

Size	From	To
13 1/2"	0	841
8 3/4"	841	6615
6 1/8"	6615	11040

Mud Data

Type	Weight	Density	Viscosity	Rm	Rmf	Rmc	From	To
WBM	8.4 - 9.2		27 - 32				0	11040

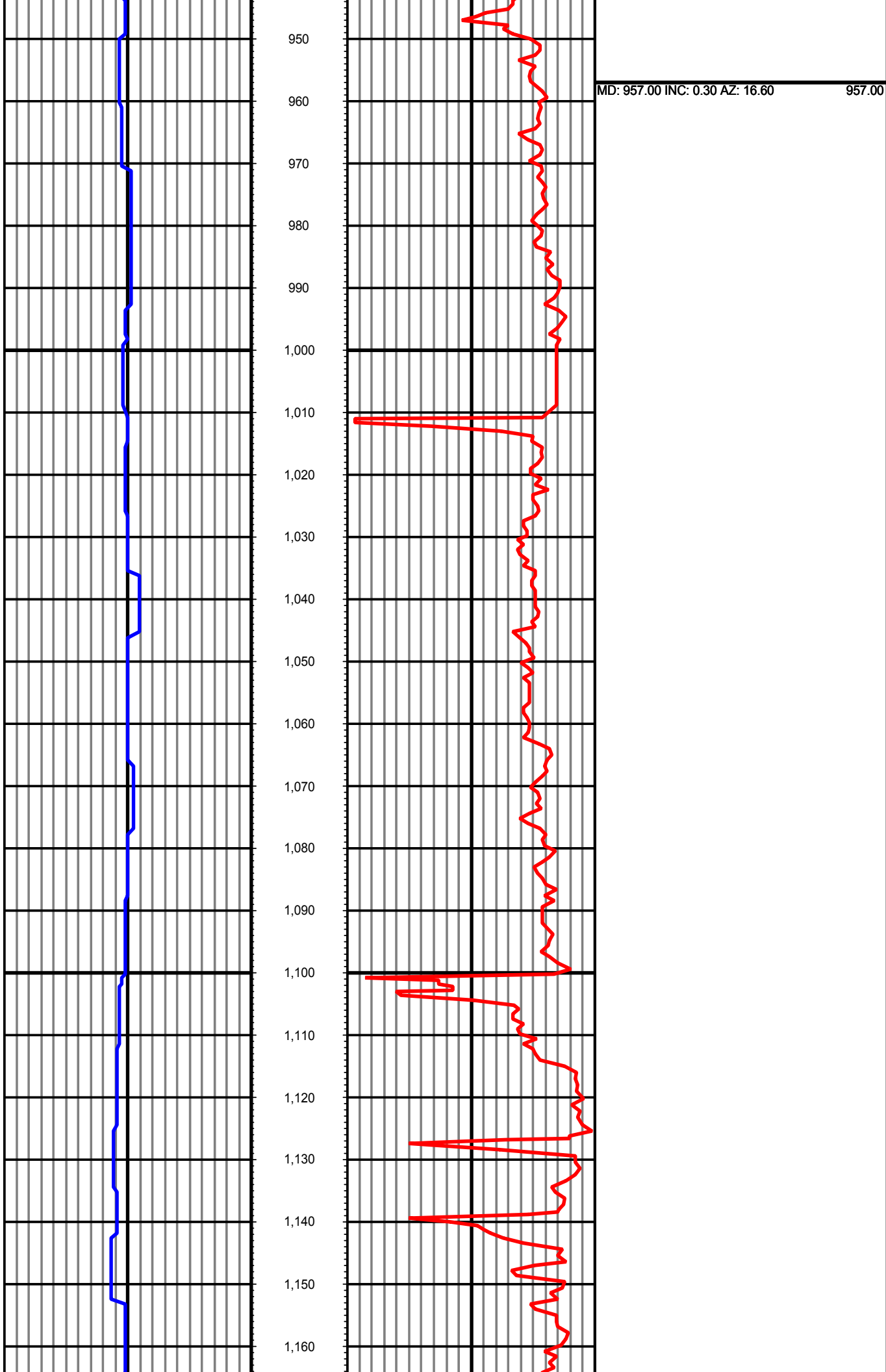
Tool Run Data

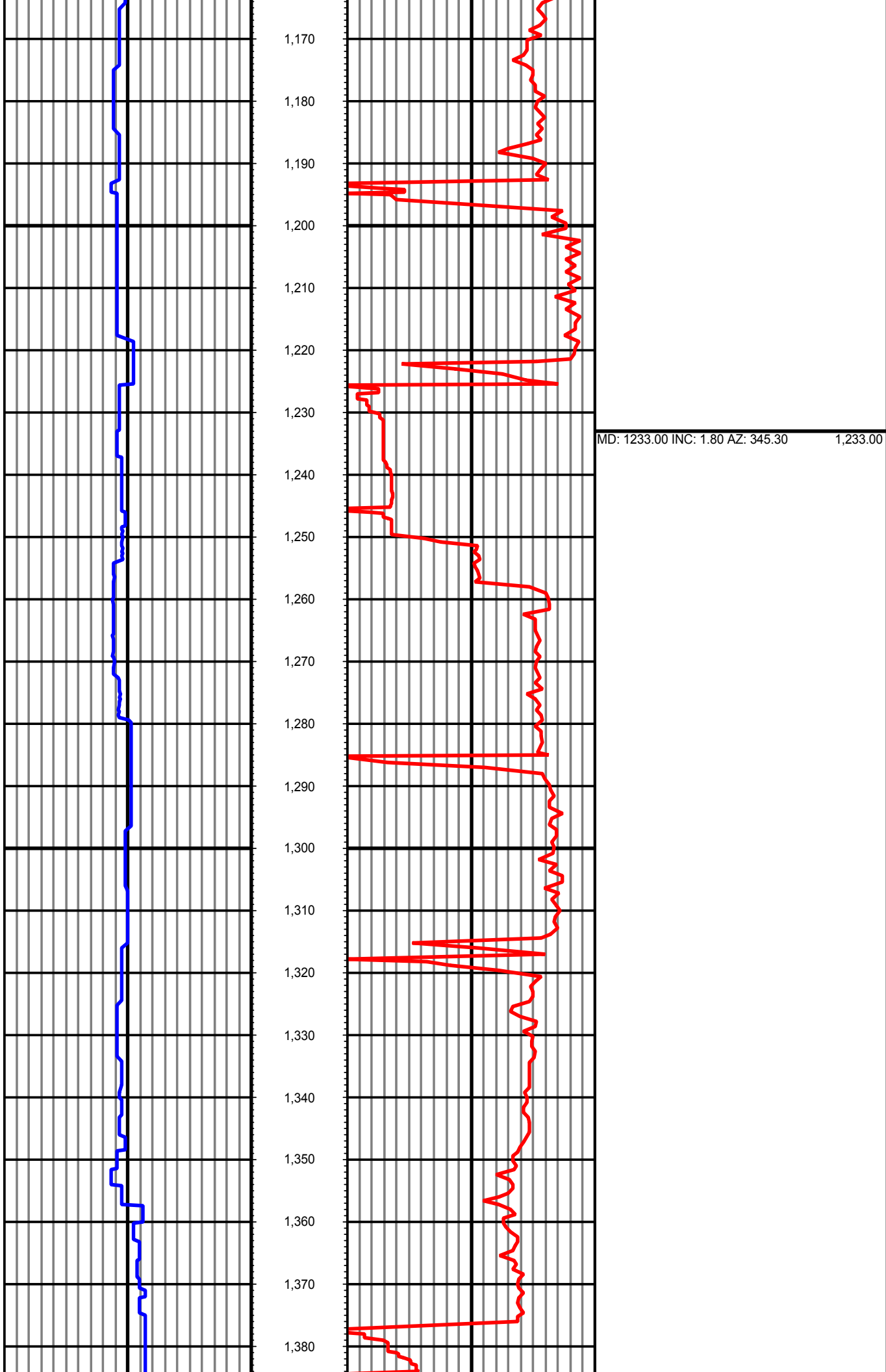
Serial Number	Gamma Offset	Resist. Offset	Start Time	Start Depth	End Time	End Depth
6217	38	51	5/29/2013 10:30:30 AM	841	5/31/2013 10:00:30 AM	5916
6218	40	60	5/31/2013 11:00:36 AM	5916	6/1/2013 7:00:36 PM	6615
6218	40	60	6/1/2013 7:30:55 PM	6615	6/2/2013 11:00:55 AM	6867
6300	35	55	6/3/2013 5:00:15 AM	6867	6/7/2013 4:30:15 AM	11040

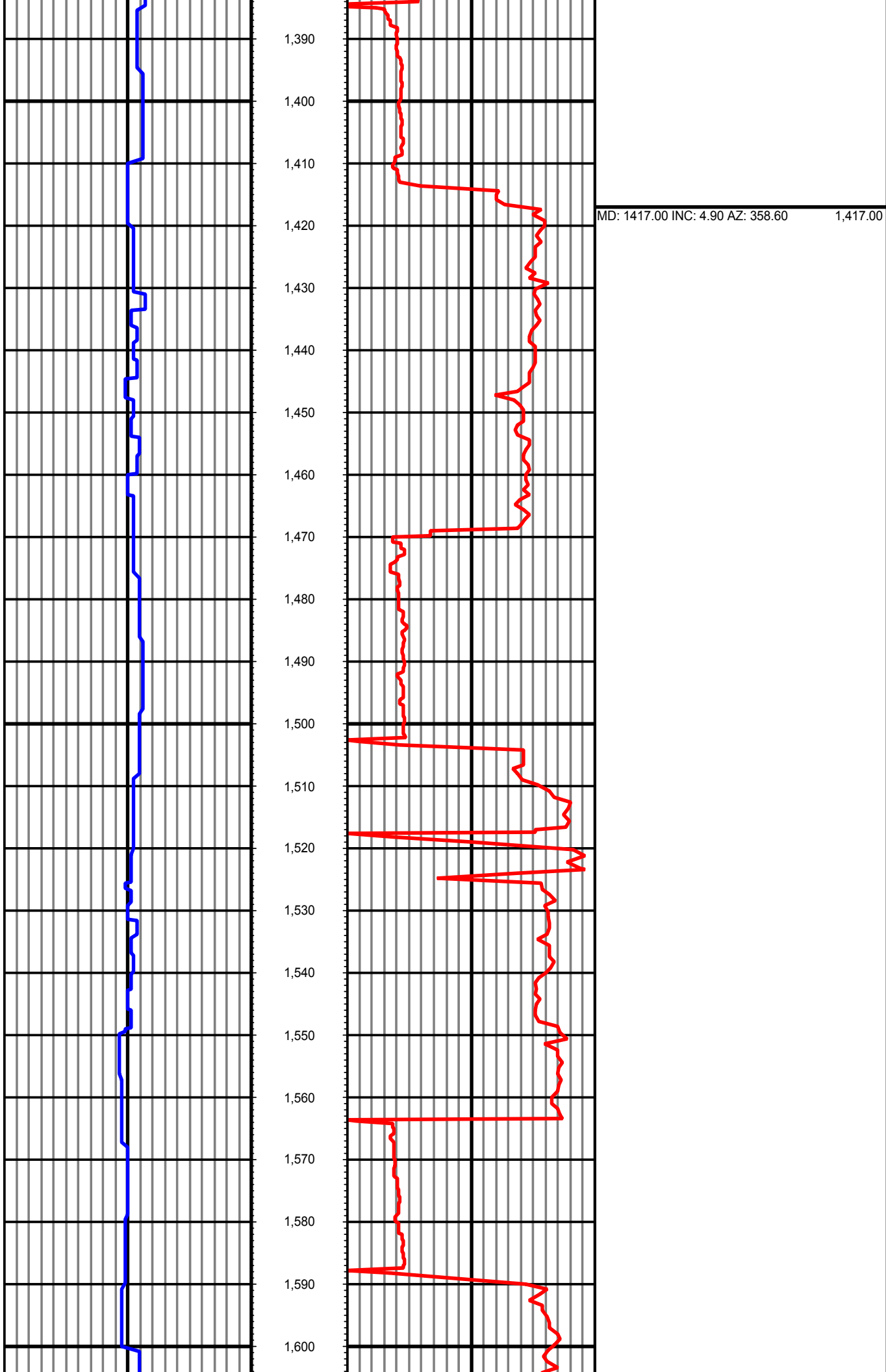
All interpretations are opinions based on inferences from electrical or other measurements and we cannot and do not guarantee the accuracy or correctness of any interpretation, and we shall not except in the case of gross or willful negligence on our part, be liable or responsible for any loss, cost damages or expenses incurred or sustained by anyone resulting from an interpretation made by any of our officers, agents, or employees.

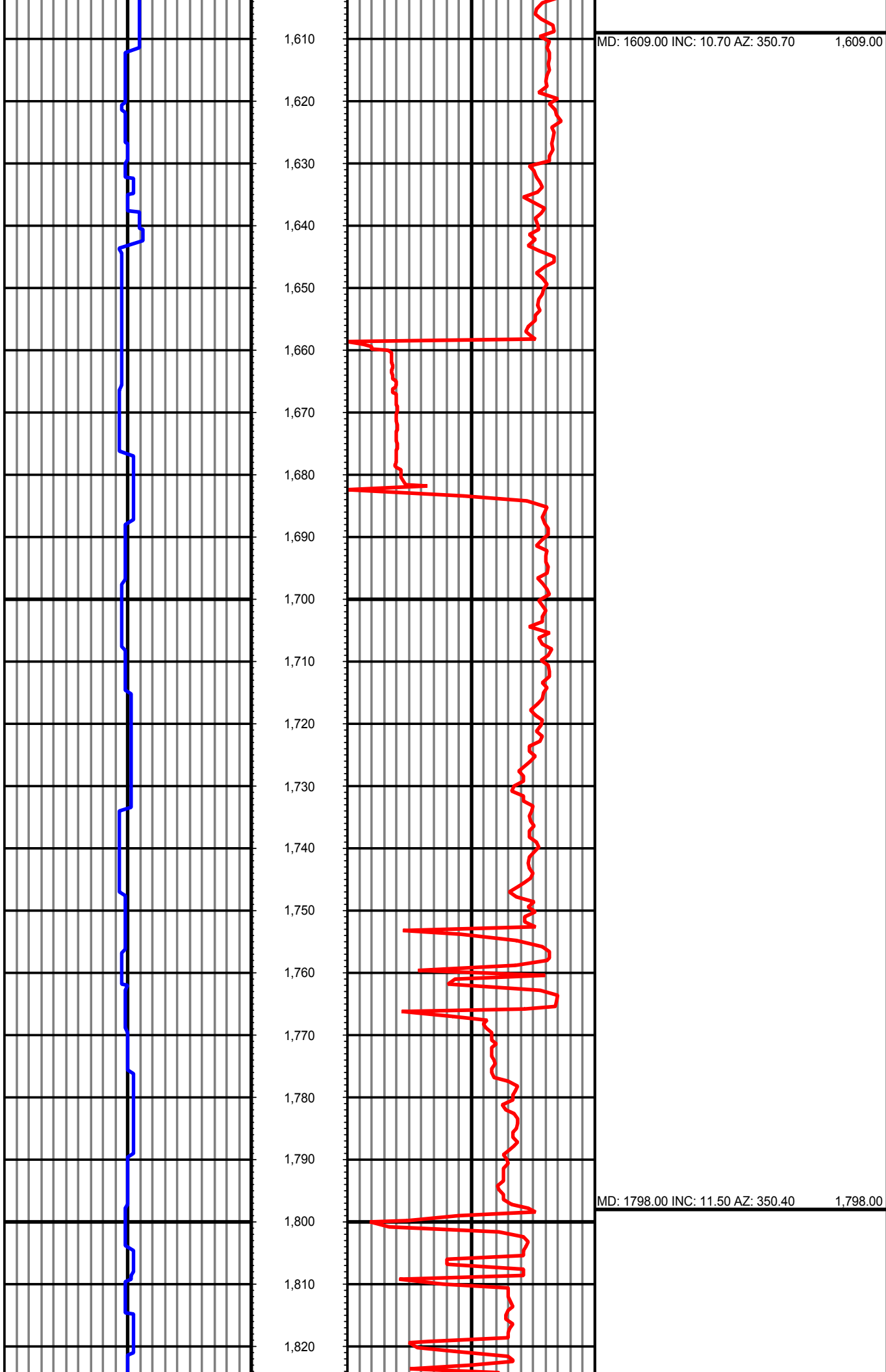
0.00 GR(API) 150.00 MD 0.00 ROP(FT/HR) 800.00 Surveys (MD/INC/AZ)
150.00 2 300.00 FT

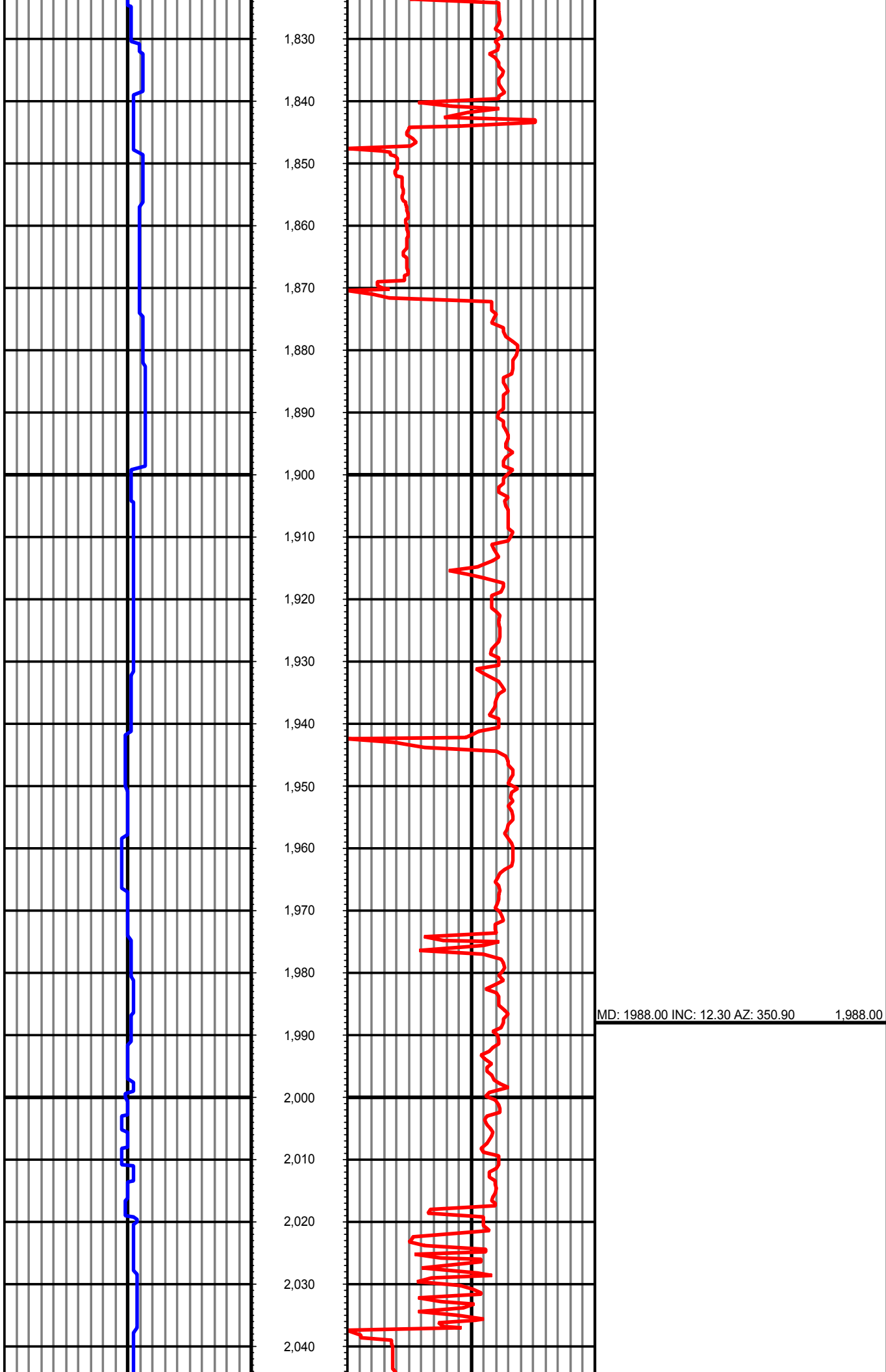


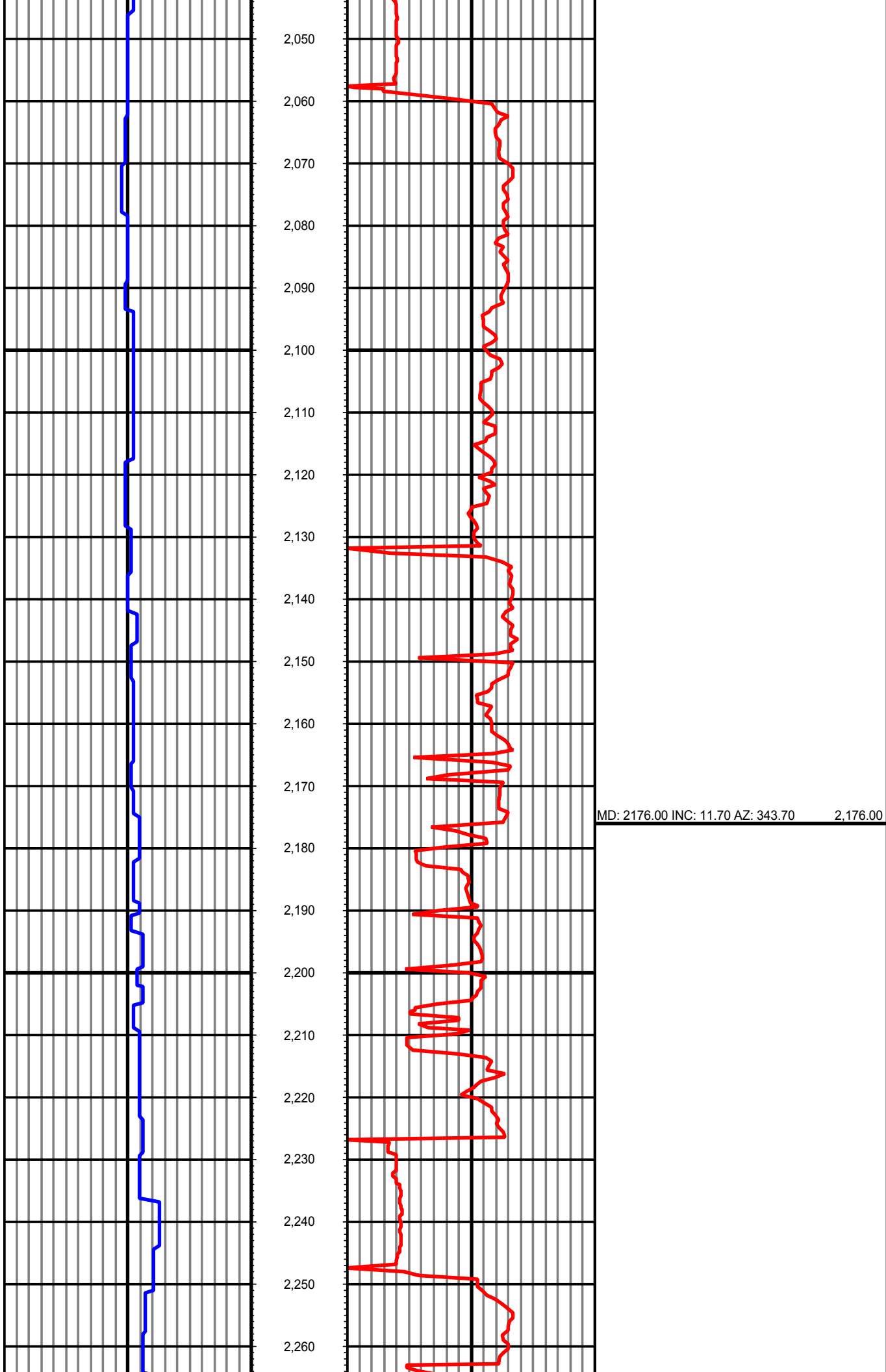


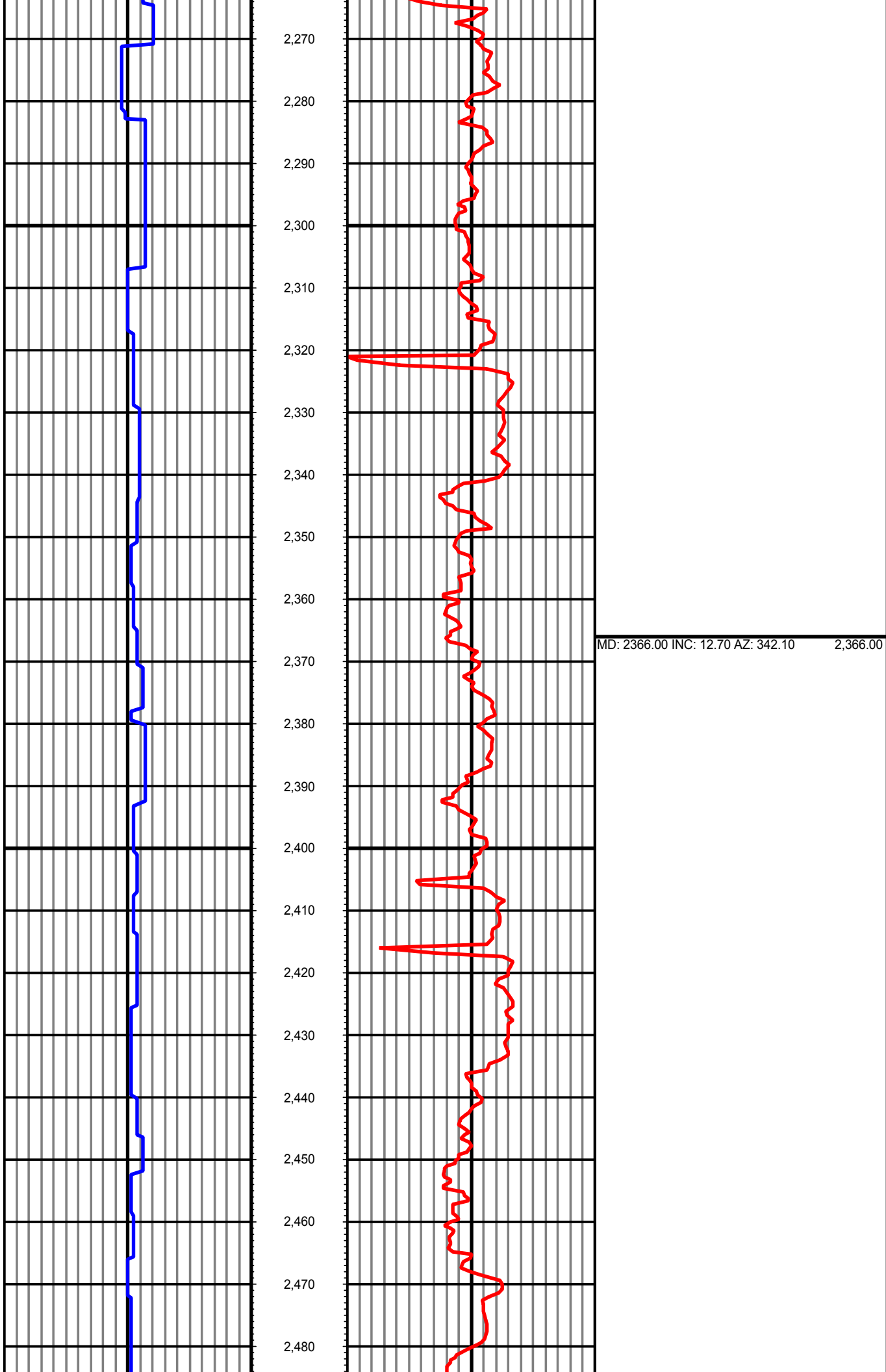


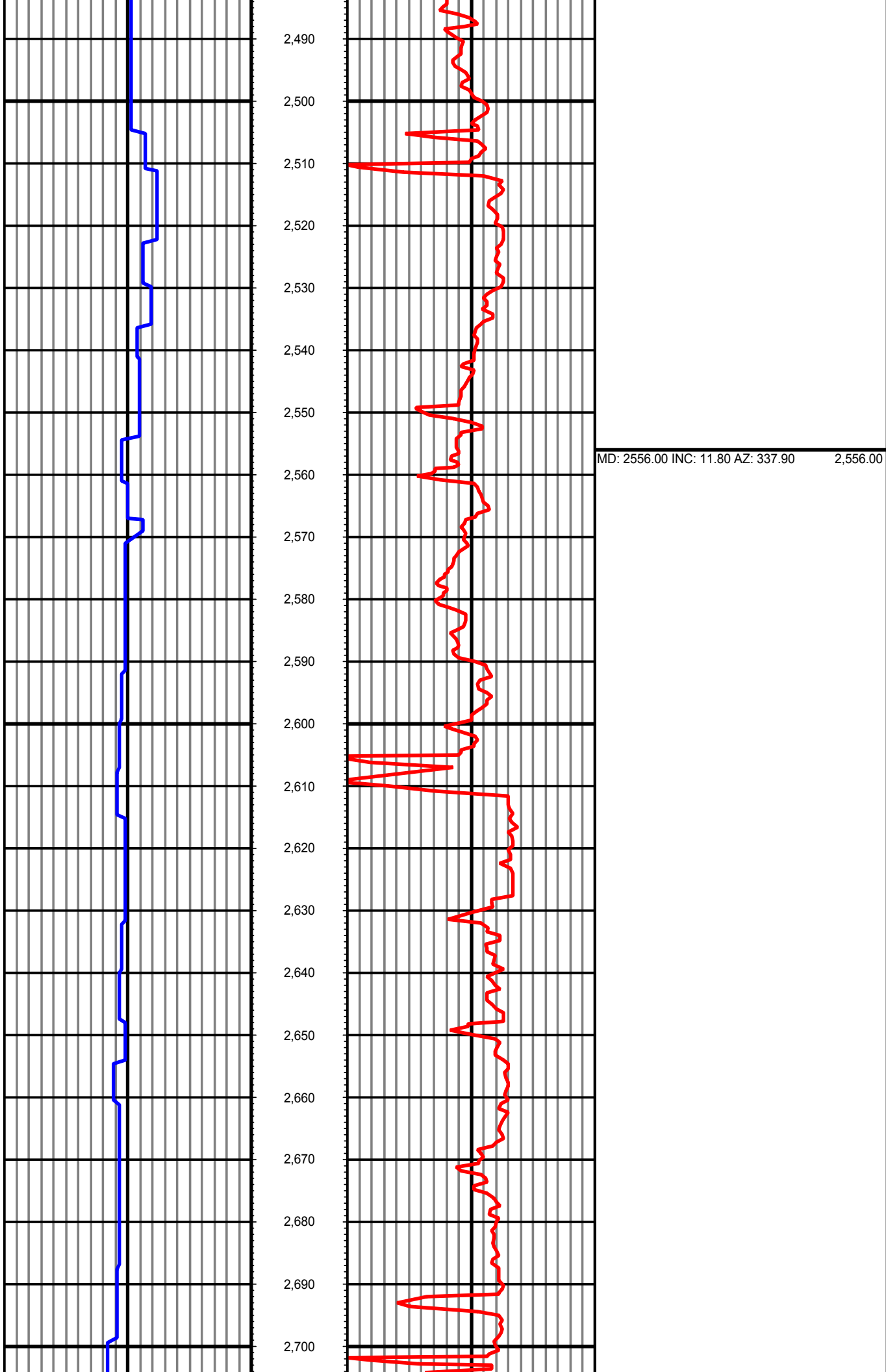


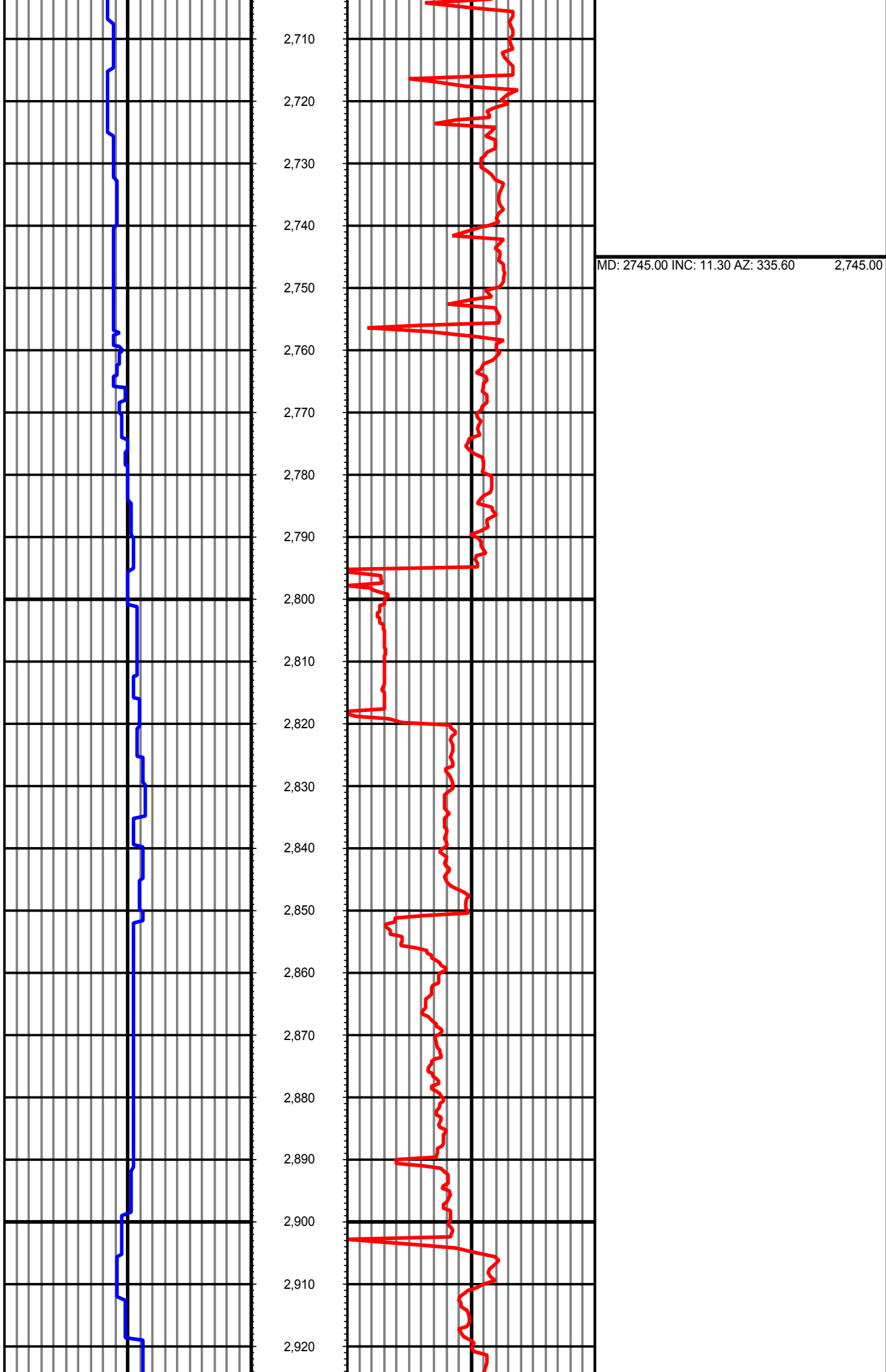


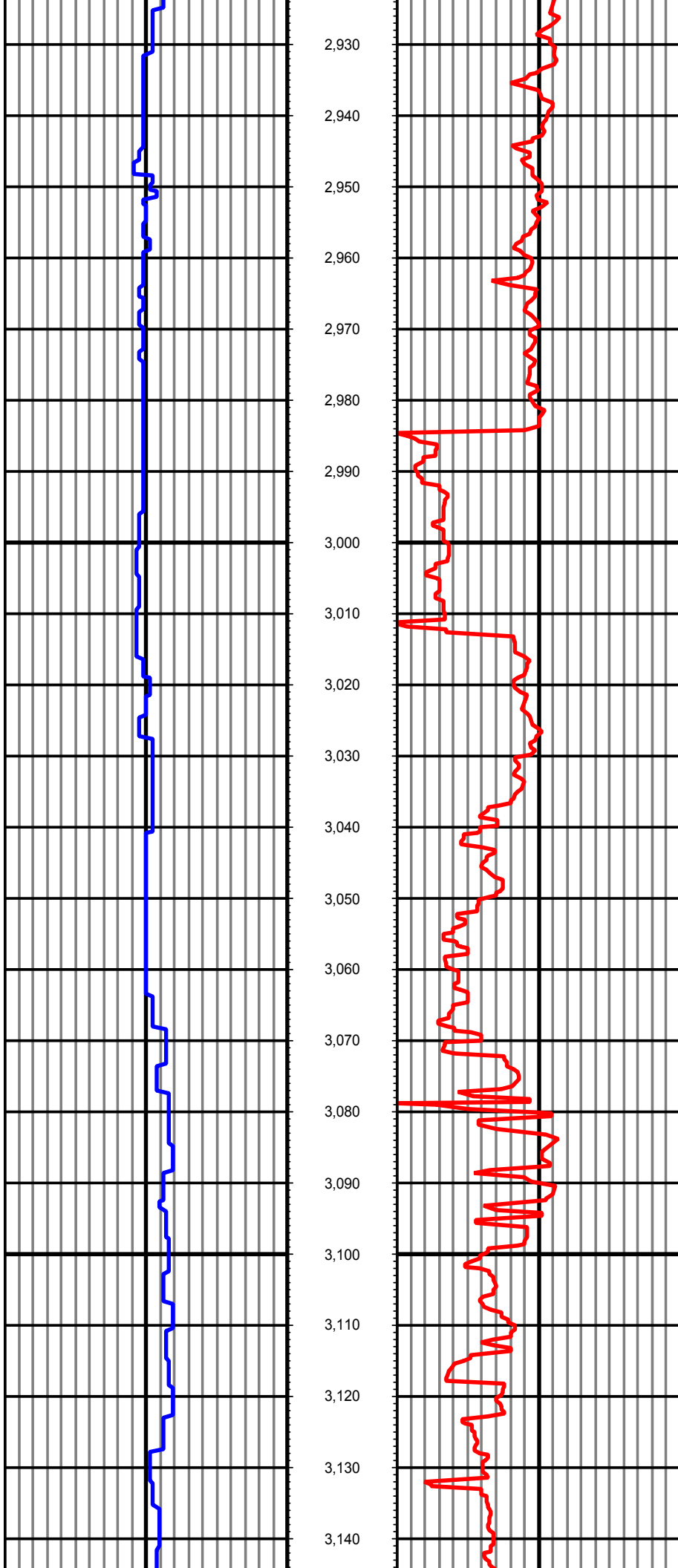












MD: 2934.00 INC: 11.40 AZ: 340.50 2,934.00

MD: 3123.00 INC: 12.00 AZ: 342.60 3,123.00

