

HALLIBURTON

iCem[®] Service

URSA RESOURCE GROUP II LLC

For: Hans Wychgram

Job Date: Tuesday, September 20, 2016

MRB 31D-17-07-95 Surface

API# 05-045-22899-00

Sincerely,

Grand Junction Cement Department

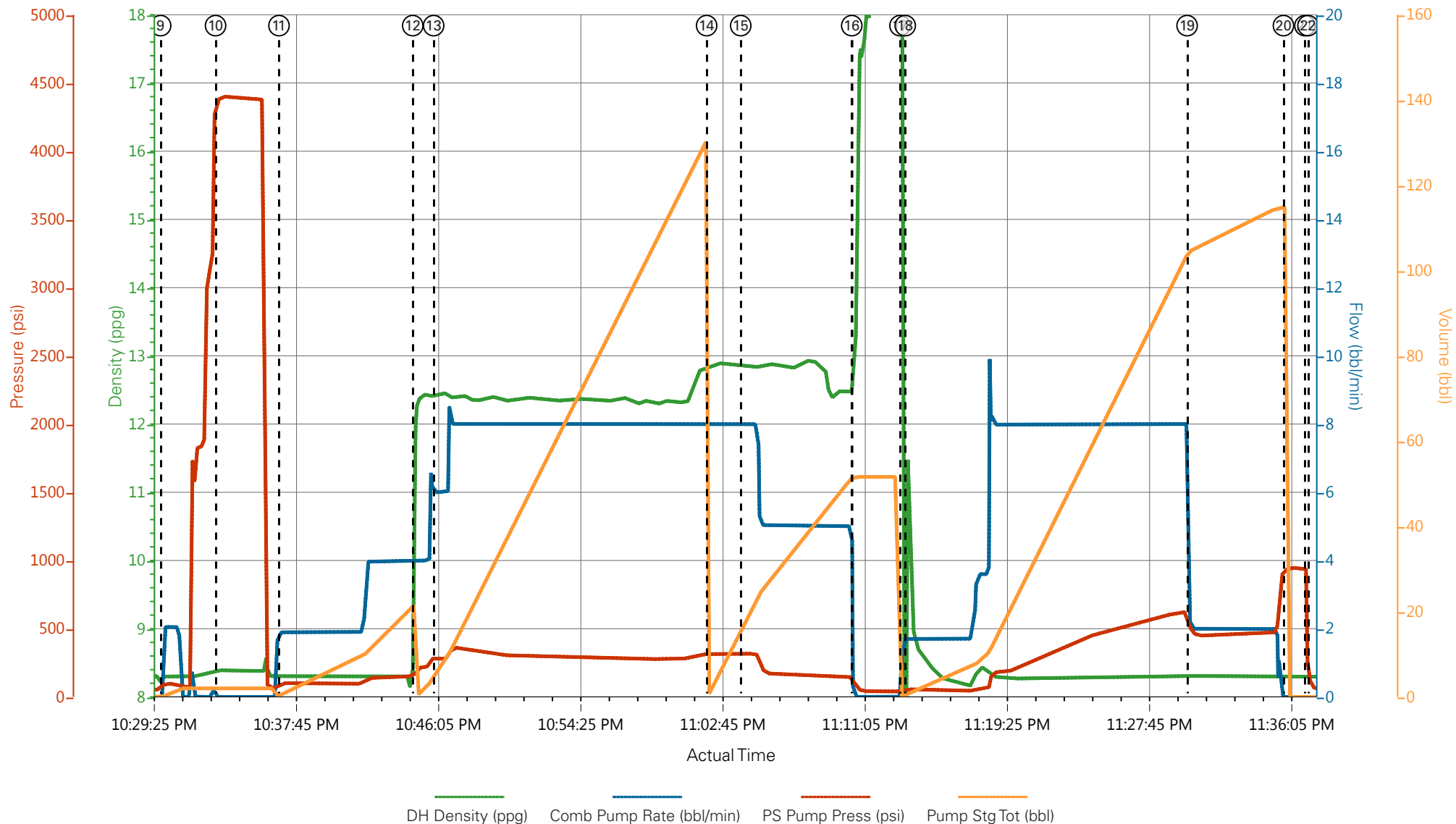
1.0 Real-Time Job Summary

1.1 Job Event Log

| Type | Seq. No. | Graph Label | Date | Time | Source | DH Density (ppg) | Comb Pump Rate (bbl/min) | PS Pump Press (psi) | Pump Stg Tot (bbl) | Comments |
|-------|----------|--|-----------|----------|--------|---------------------|-----------------------------|------------------------|-----------------------|---|
| Event | 1 | Call Out | 9/20/2016 | 13:30:00 | USER | | | | | Requested on Location @ 19:30 |
| Event | 2 | Pre-Convoy Safety Meeting | 9/20/2016 | 15:30:00 | USER | | | | | All HSE Present |
| Event | 3 | Crew Leave Yard | 9/20/2016 | 15:35:00 | USER | | | | | 1 Elite, 1 660, 1 pickup |
| Event | 4 | Arrive at Location from Service Center | 9/20/2016 | 16:30:00 | USER | | | | | Rig Running Casing |
| Event | 5 | Assessment Of Location Safety Meeting | 9/20/2016 | 16:40:00 | USER | | | | | JSA completed - Customer offered/received SDS - water test pH 7.0, CI <200, temp 68 degrees |
| Event | 6 | Pre-Rig Up Safety Meeting | 9/20/2016 | 20:00:00 | USER | | | | | All HSE Present |
| Event | 7 | Rig-Up Equipment | 9/20/2016 | 20:05:00 | USER | | | | | 1 hardline and standpipe, water hoses to upright and day tank, bulk hoses to silo. |
| Event | 8 | Pre-Job Safety Meeting | 9/20/2016 | 21:12:43 | USER | | | | | All HES personnel, rig crew, and company rep |
| Event | 9 | Start Job | 9/20/2016 | 22:30:00 | USER | | | | | TD 1897', TP 1876', SJ 45', OH 12.25'', Csg 8.625'' 32 lb/ft J-55, Mud 10 ppg. |
| Event | 10 | Test Lines | 9/20/2016 | 22:33:13 | COM6 | 8.4 | .5 | 4400 | 2.0 | Held pressure 2 minutes no leaks |
| Event | 11 | Pump Spacer 1 | 9/20/2016 | 22:36:56 | COM6 | 8.4 | 2 | 150 | 20 | 20 bbl Fresh water |
| Event | 12 | Pump Lead Cement | 9/20/2016 | 22:44:46 | COM6 | 12.3 | 8 | 340 | 126.2 | 288 Sks 12.3 ppg 2.46 yield 14.17 gal/sk |

| | | | | | | | | | | |
|-------|----|--------------------------------|-----------|----------|------|------|------|--------|-------|--|
| Event | 13 | Check weight | 9/20/2016 | 22:46:00 | COM6 | 12.3 | | | | Verified with Mud Scales |
| Event | 14 | Pump Tail Cement | 9/20/2016 | 23:02:00 | COM6 | 12.8 | 8 | 310 | 46.6 | 120 Sks 12.8 ppg 2.18 yield 12.11 gal/sk |
| Event | 15 | Check weight | 9/20/2016 | 23:04:00 | COM6 | 12.8 | | | | Verified with Mud Scales |
| Event | 16 | Shutdown | 9/20/2016 | 23:10:30 | USER | | | | | Wash up on top of plug |
| Event | 17 | Pump Displacement | 9/20/2016 | 23:13:20 | COM6 | 8.4 | 8 | 625 | 111.5 | Fresh Water |
| Event | 18 | Drop Top Plug | 9/20/2016 | 23:13:38 | USER | | | | | Verify Plug Launched |
| Event | 19 | Slow Rate | 9/20/2016 | 23:30:09 | USER | 8.4 | 2.00 | 497.00 | 101.5 | Slow Rate 10 bbls to Calculated Displacement |
| Event | 20 | Bump Plug | 9/20/2016 | 23:35:48 | COM6 | | | | | Plug Bumped at 470 psi, Brought up to 950 psi |
| Event | 21 | Check Floats | 9/20/2016 | 23:37:04 | USER | | | | | Floats held – ½ bbl back to the truck |
| Event | 22 | End Job | 9/20/2016 | 23:37:14 | USER | | | | | Good Returns Throughout job, Pipe was not reciprocated during cement, 35 bbls of Cement to surface |
| Event | 23 | Pre-Rig Down Safety Meeting | 9/20/2016 | 23:45:00 | USER | | | | | 40 lbs sugar, No add hours, bottom plug not used |
| Event | 24 | Rig-Down Equipment | 9/20/2016 | 23:46:00 | USER | | | | | All HSE Present |
| Event | 25 | Pre-Convoy Safety Meeting | 9/20/2016 | 23:47:00 | USER | | | | | All HSE Present |
| Event | 26 | Crew Leave Location | 9/20/2016 | 23:55:00 | USER | | | | | Thank you for using Halliburton – Ryan Muhlestein and crew. |

URSA MRB 31D-17-07-95 8 5/8" SURFACE CASING



- | | | | | |
|--|--------------------------|---------------------|--------------------------------|------------------------------|
| ① Call Out | ⑦ Rig-Up Equipment | ⑬ Check weight | ⑰ Slow Rate | 25 Pre-Convoy Safety Meeting |
| ② Pre-Convoy Safety Meeting | ⑧ Pre-Job Safety Meeting | ⑭ Pump Tail Cement | 20 Bump Plug | 26 Crew Leave Location |
| ③ Crew Leave Yard | ⑨ Start Job | ⑮ Check weight | 21 Check Floats | |
| ④ Arrive at Location from Service Center | ⑩ Test Lines | ⑯ Shutdown | 22 End Job | |
| ⑤ Assessment Of Location Safety Meeting | ⑪ Pump Spacer 1 | ⑰ Pump Displacement | 23 Pre-Rig Down Safety Meeting | |
| ⑥ Pre-Rig Up Safety Meeting | ⑫ Pump Lead Cement | ⑱ Drop Top Plug | 24 Rig-Down Equipment | |

▼ **HALLIBURTON** | iCem® Service

Created: 2016-09-20 20:27:01, Version: 4.2.393

Edit

Customer : URSA RESOURCE GROUP II LLC
Representative : RICHARD MCNEILL

Job Date : 9/20/2016
Sales Order # : 903546270

Well : MRB 31D-17-07-95
ELITE 8 : MUHLESTEIN / ANGELO

URSA MRB 31D-17-07-95 8 5/8" SURFACE CASING

