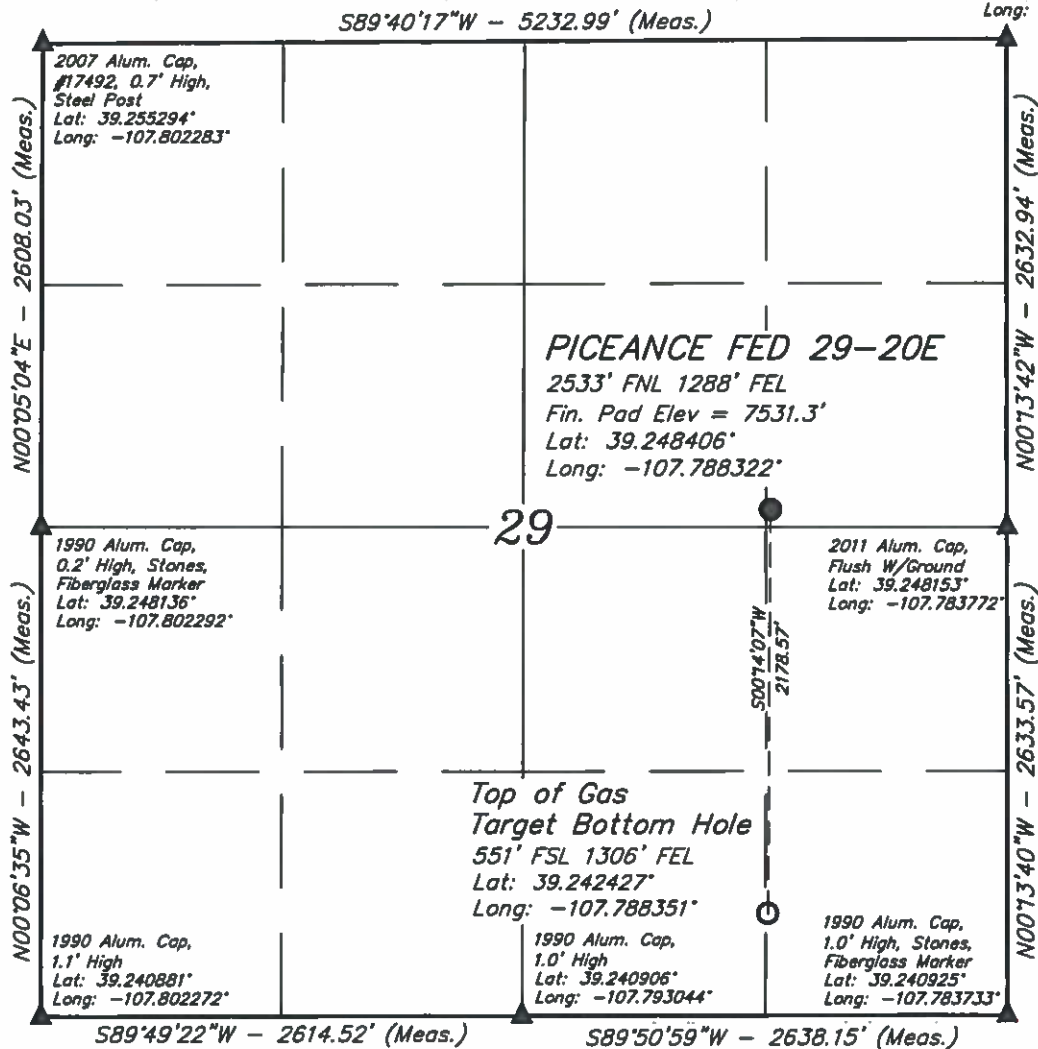


LEGEND:

- = 90° SYMBOL
 ● = PROPOSED WELLHEAD.
 ○ = TARGET BOTTOM HOLE.
 ▲ = SECTION CORNERS LOCATED.

T9S, R93W, 6th P.M.

Set Marked Stone,
E-W Fenceline
Lat: 39.255381°
Long: -107.783811°



NOTE DISTANCE TO NEAREST:
 BUILDING: N05°E 1231'
 BUILDING UNIT: OVER A MILE
 HOBV: OVER A MILE
 DOAA: OVER A MILE
 PUBLIC ROAD: OVER A MILE
 ABOVE GROUND UTILITY: EAST 509'
 RAILROAD: OVER A MILE
 PROPERTY LINE: EAST 1288'

NOTE:

- 1.) All latitudes and longitudes are given in NAD 83 coordinates.
- 2.) Distances to nearest section lines are measured perpendicularly.

CERTIFICATE
 THIS IS TO CERTIFY THAT THE ABOVE PLAT WAS PREPARED FROM THE NOTES OF ACTUAL SURVEYS MADE BY ME OR UNDER MY SUPERVISION, AND THAT THE LOCATION HAS BEEN STAKED ON THE GROUND AS SHOWN ON THE PLAT AND THAT THE SAME ARE TRUE AND CORRECT TO THE BEST OF MY KNOWLEDGE AND BELIEF.

REGISTERED LAND SURVEYOR
 REGISTRATION NO. 10510
 STATE OF COLORADO 10-27-16

PDOP = 1.2



REV: 03 12-22-16 S.S. (NAME & BHL CHANGE)

BASIS OF BEARINGS

BASIS OF BEARINGS IS A GPS OBSERVATION

BASIS OF ELEVATION

BENCH MARK (19 RDS) LOCATED IN THE SE 1/4 OF SECTION 16, T9S, R93W, 6th P.M., TAKEN FROM THE SOUTH MAMMI PEAK, QUADRANGLE, COLORADO, 7.5 MINUTE QUAD (TOPOGRAPHIC MAP) PUBLISHED BY THE UNITED STATES DEPARTMENT OF THE INTERIOR, GEOLOGICAL SURVEY. SAID ELEVATION IS MARKED AS BEING 7252 FEET.

N

LARAMIE ENERGY, LLC

PICEANCE FED 29-20E
 SE 1/4 NE 1/4, SECTION 29, T9S, R93W, 6th P.M.
 MESA COUNTY, COLORADO

SURVEYED BY: GLEN MCELROY, N.F. DATE: 04-22-15

DRAWN BY: S.S. DATE DRAWN: 10-04-16

SCALE: 1" = 1000'

WELL LOCATION PLAT

UELS, LLC
 Corporate Office * 85 South 200 East
 Vernal, UT 84078 * (435) 789-1017