



SOURCE RNF AND RMC: MEAS.  
 RM AT BHT: 1.700 OHM-M AT 208 DEG. F  
 RNF AT BHT: 1.300 OHM-M AT 208 DEG. F  
 RMC AT BHT: 1.900 OHM-M AT 208 DEG. F

MAX. RECORDED TEMP.: 208 DEG. F  
 TIME SINCE LAST SER., HRS.: 5.0  
 OPERATING RIG TIME, HRS.: 17.0

SOURCE SERIAL NUMBERS:

71200040 CSV-C1

SOURCE STRENGTH. CURSES:

20,000 2,000

SOURCE SERIAL NUMBERS:

000010 00001-1

000000-7 200010

COMMENTS

BOREHOLE VOLUME: X=10 CUBIC FEET XX=100 CUBIC FEET  
 SURFACE GAGES NOT LOGGED DUE TO BOREHOLE CONDITIONS  
 \*\*\*\* THANK YOU FOR USING GREAT GUNS INC. (303) 654-0700 \*\*\*\*

GAMMA RAY  
API UNITS

0 130  
 90 290

CALIPER  
INCHES

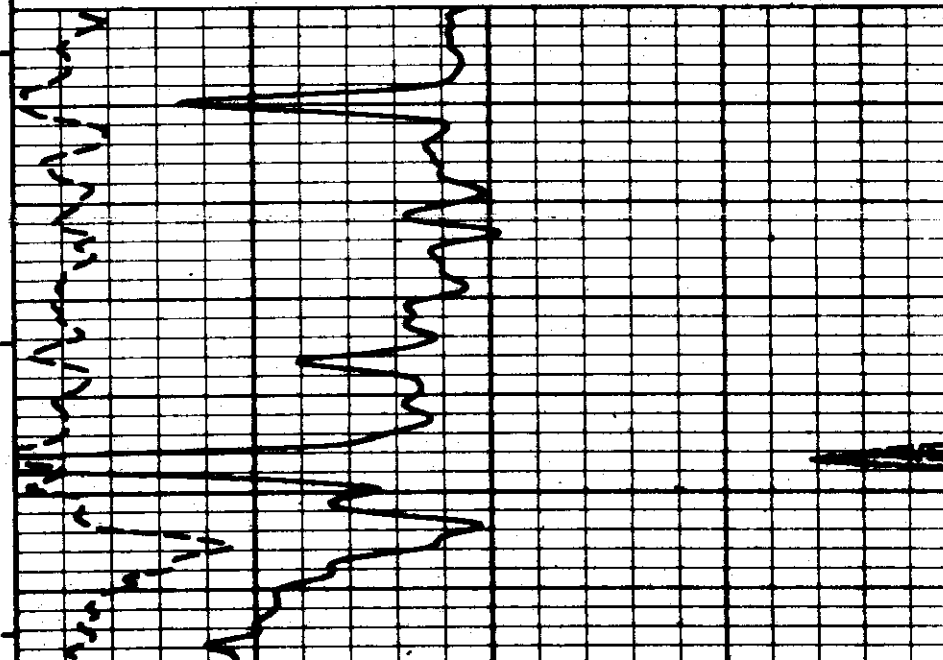
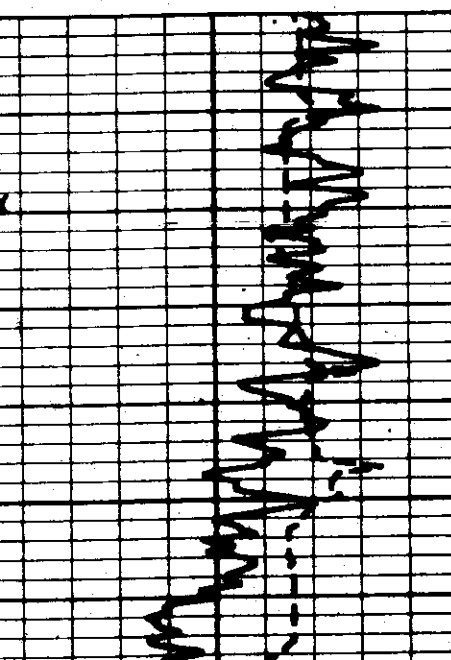
16

DENSITY POROSITY  
PERCENT

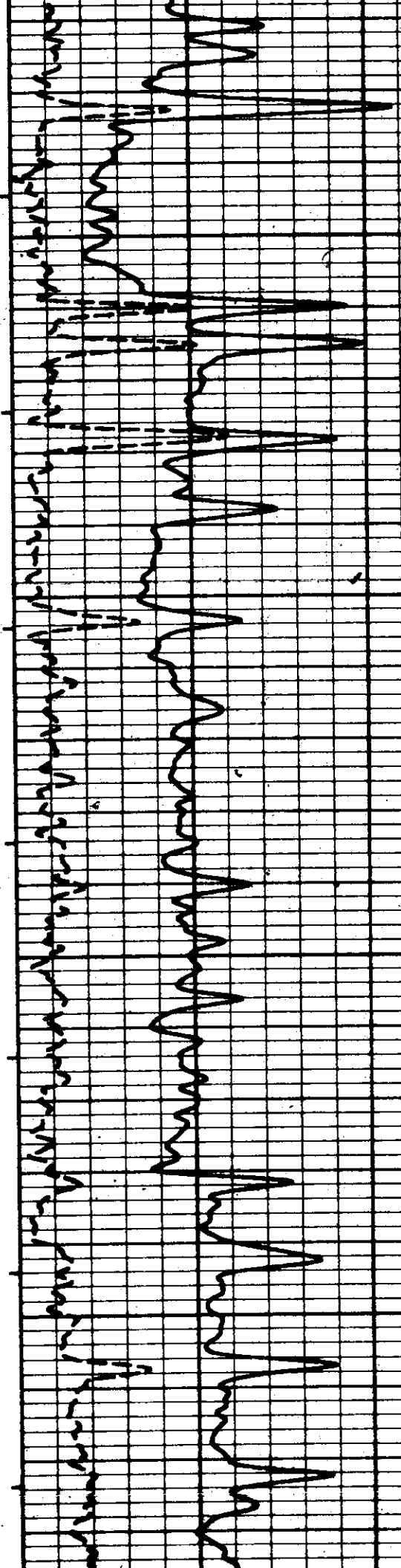
30.0 -10.0

COMPENSATED N-N POROSITY  
PERCENT

30.0 -10.0

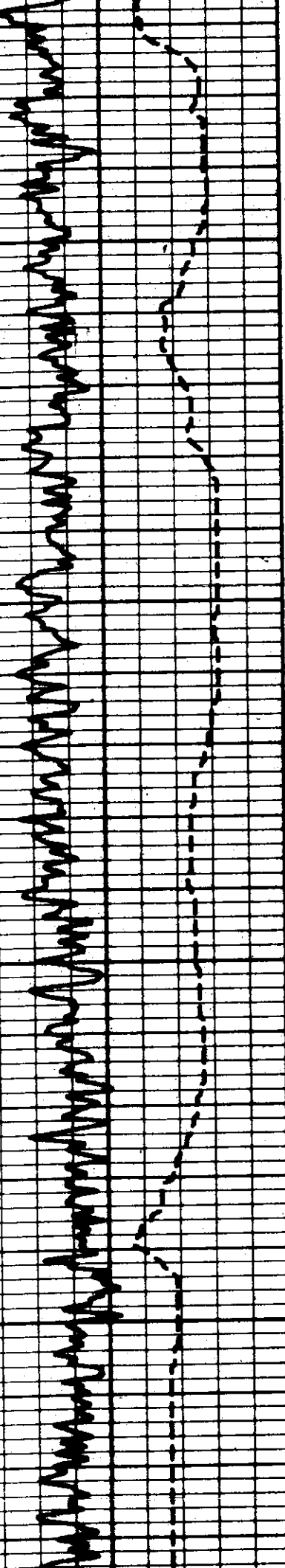


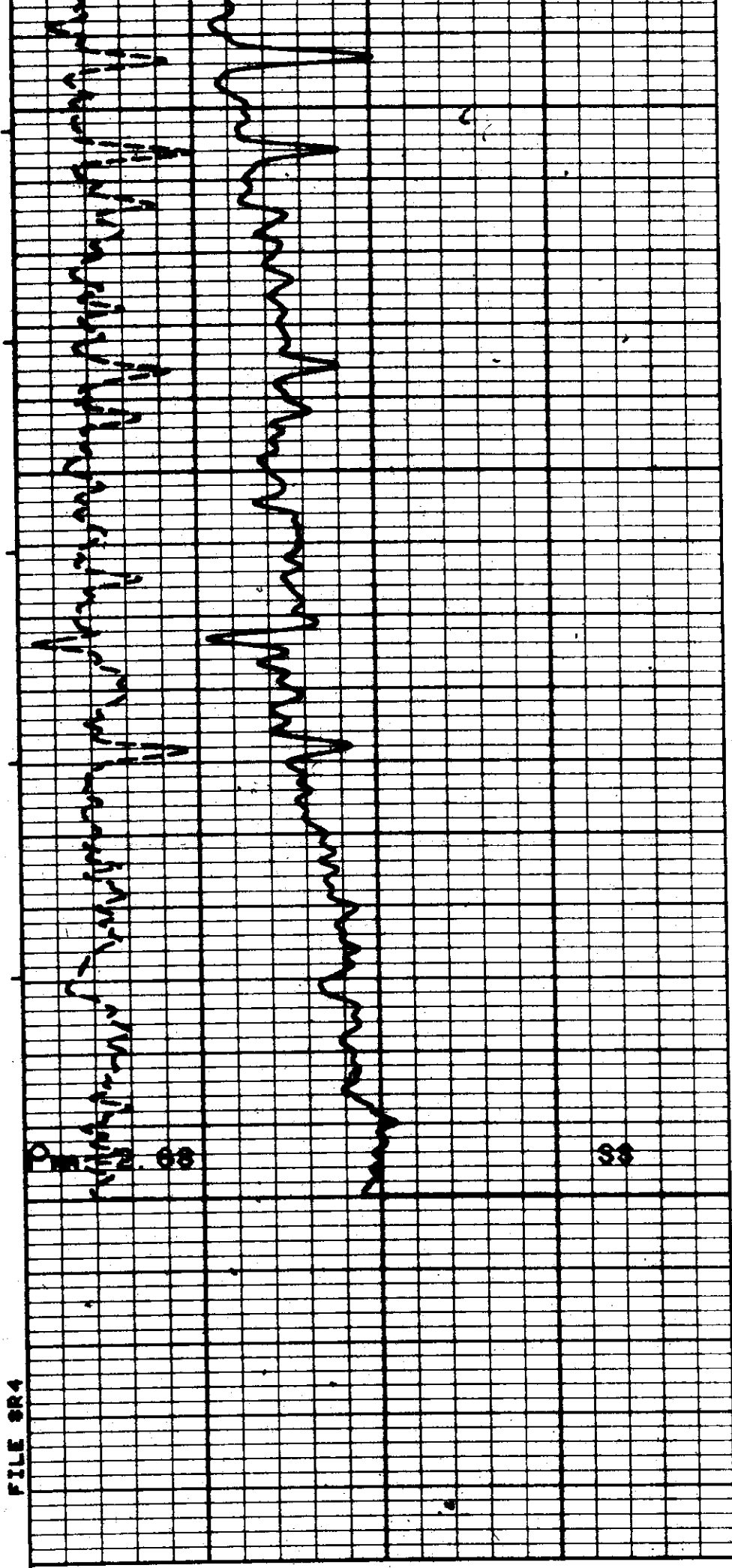
3700



3800

3900

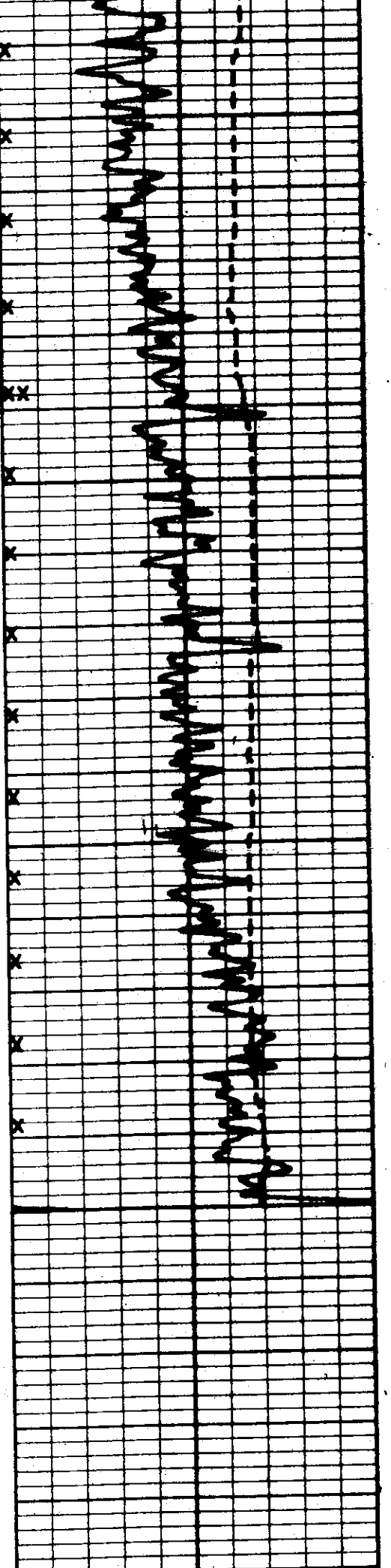




4000

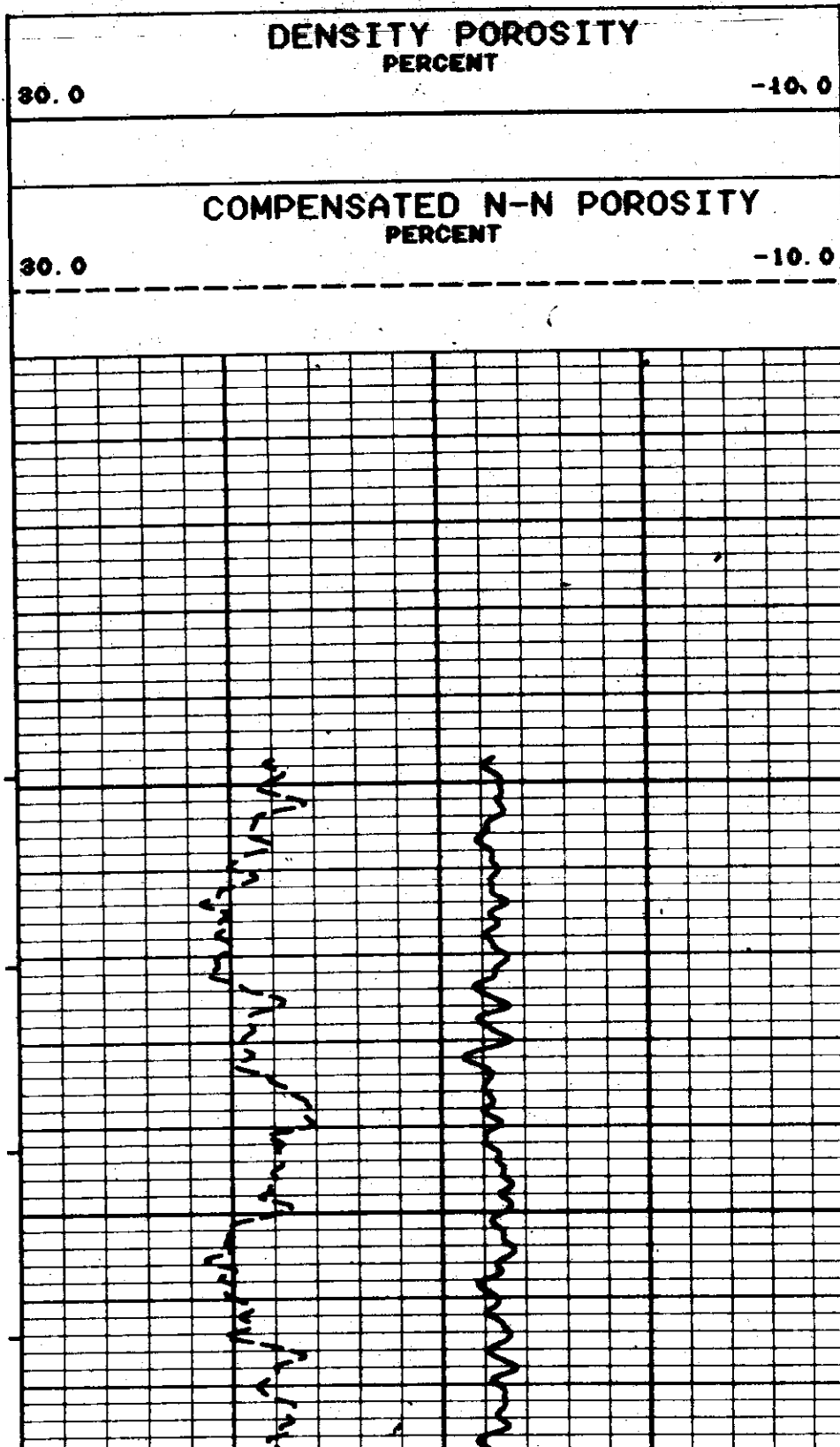
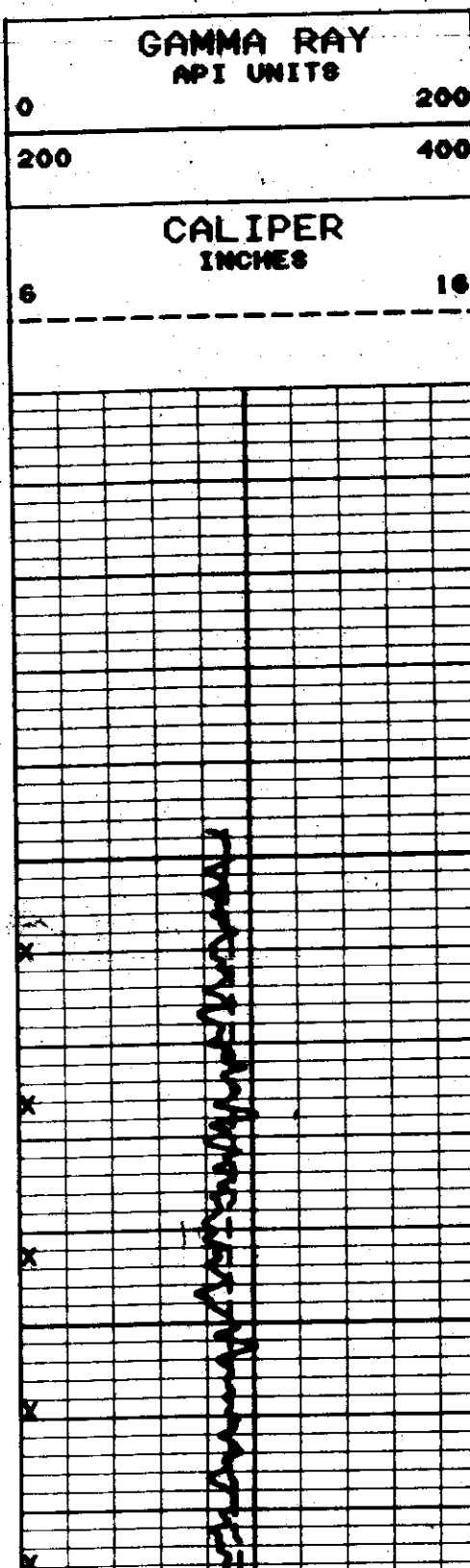
4100

FILE SR4



GAMMA RAY API UNITS	
30	130
130	230
CALIPER INCHES	
6	16

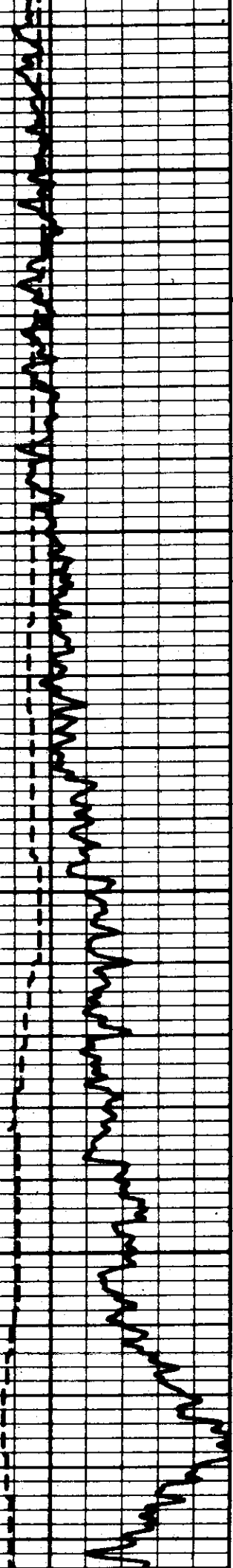
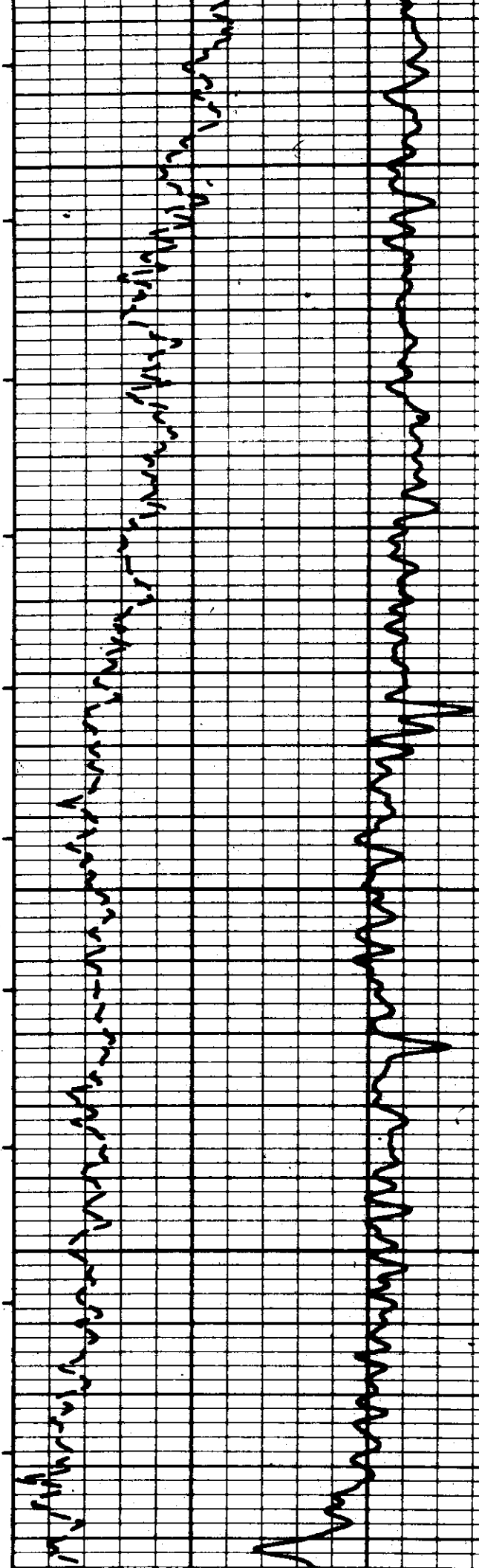
DENSITY POROSITY PERCENT	
30.0	-10.0
COMPENSATED N-N POROSITY PERCENT	
30.0	-10.0



6400

6500

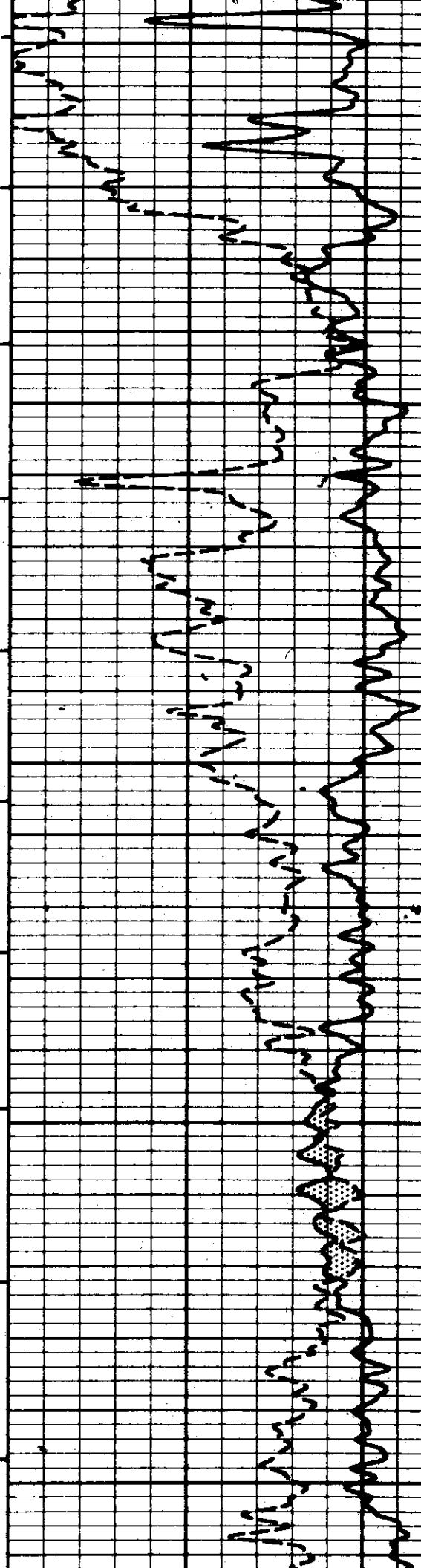
6600

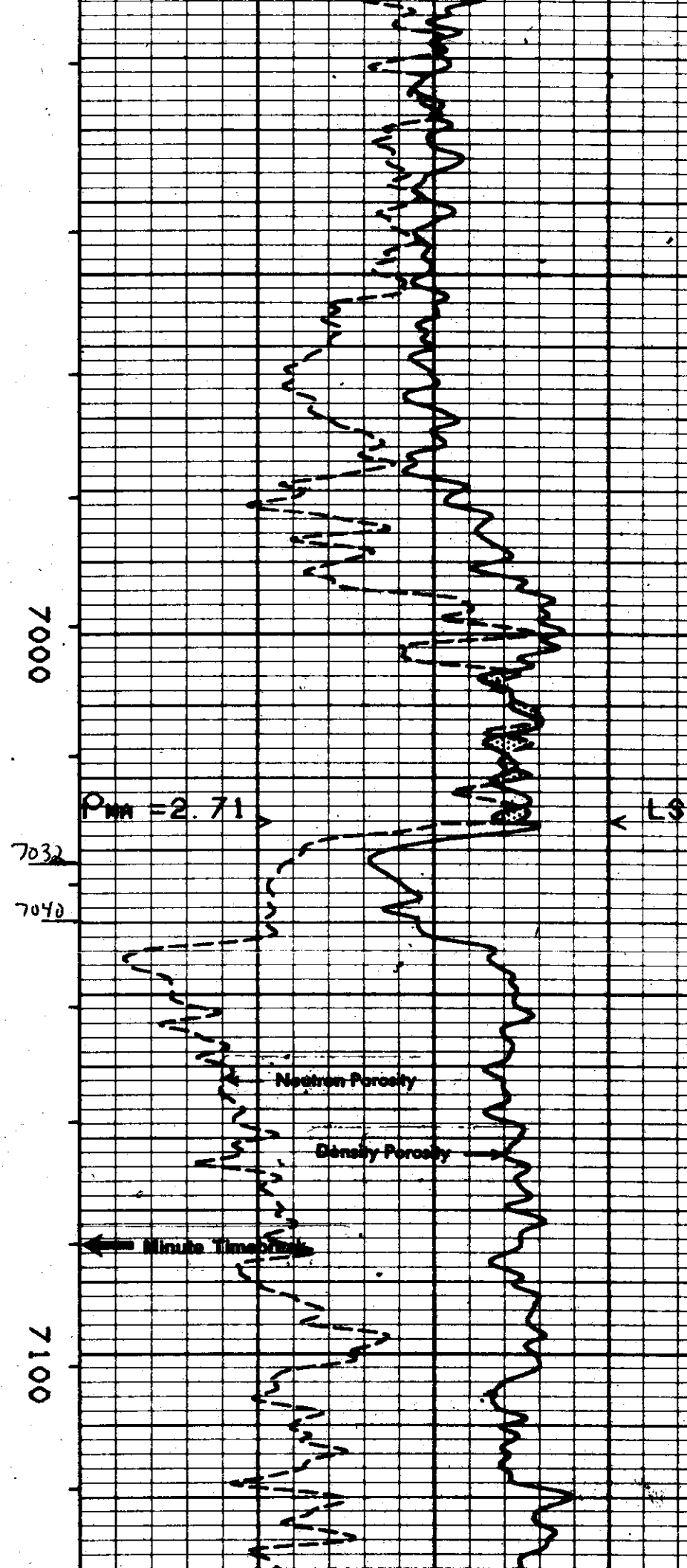
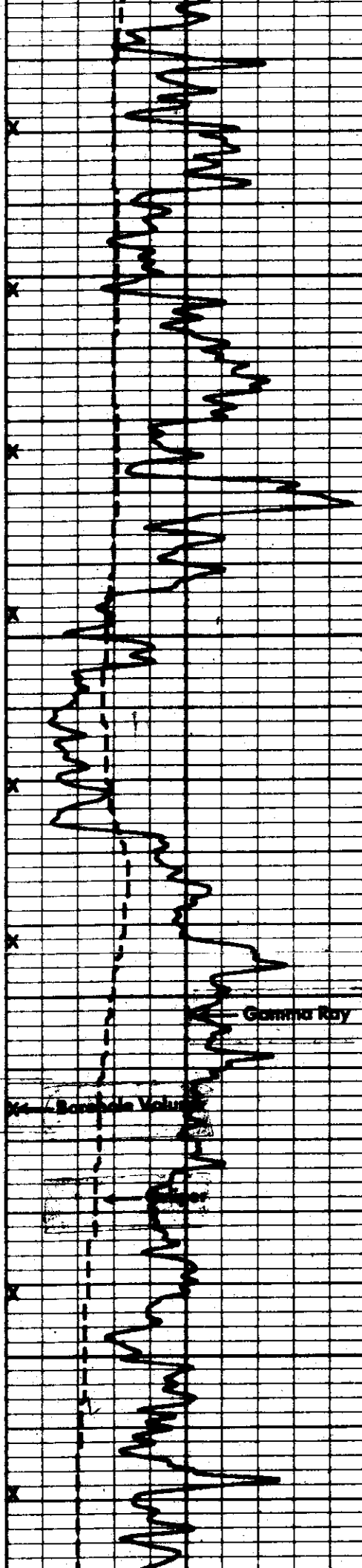


6900

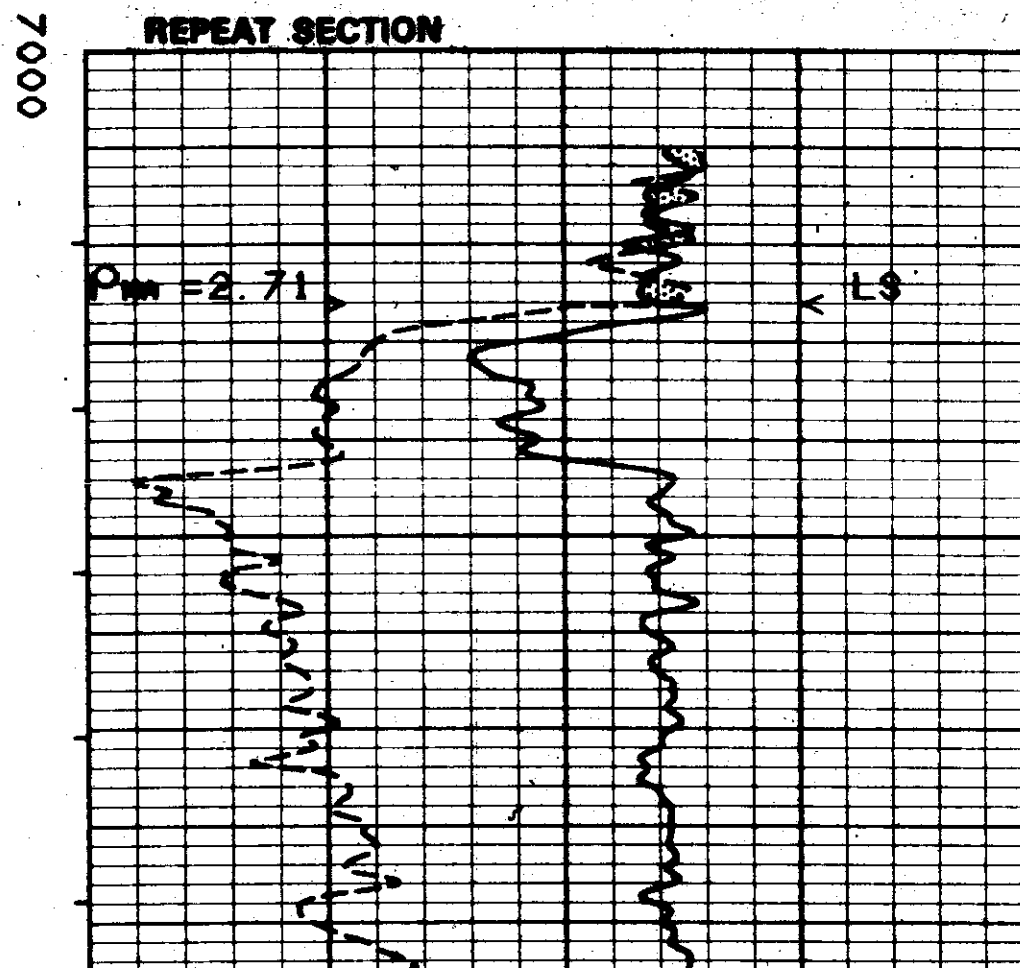
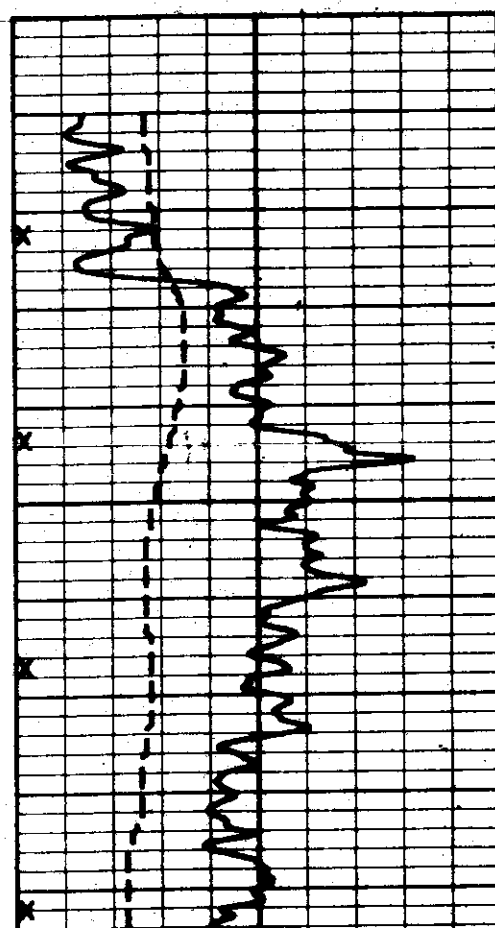
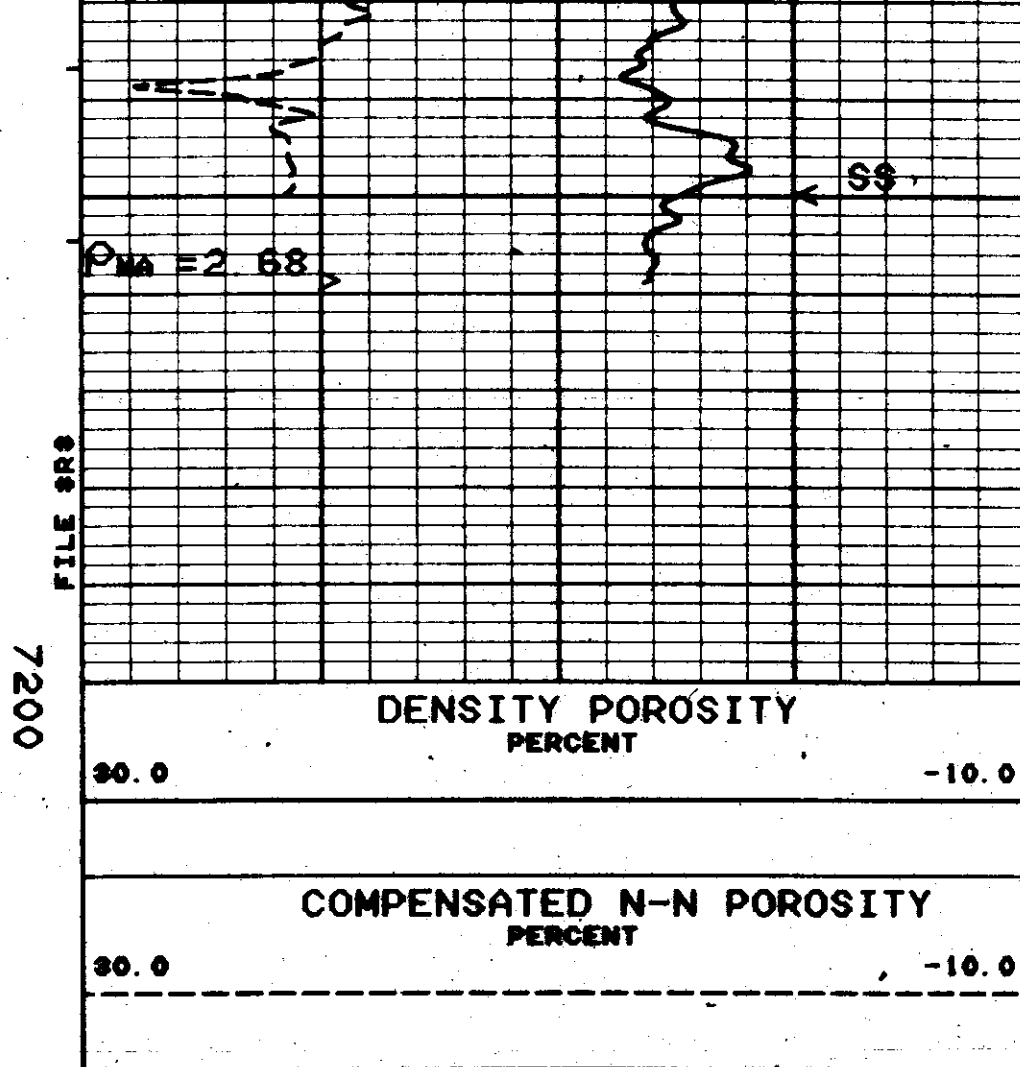
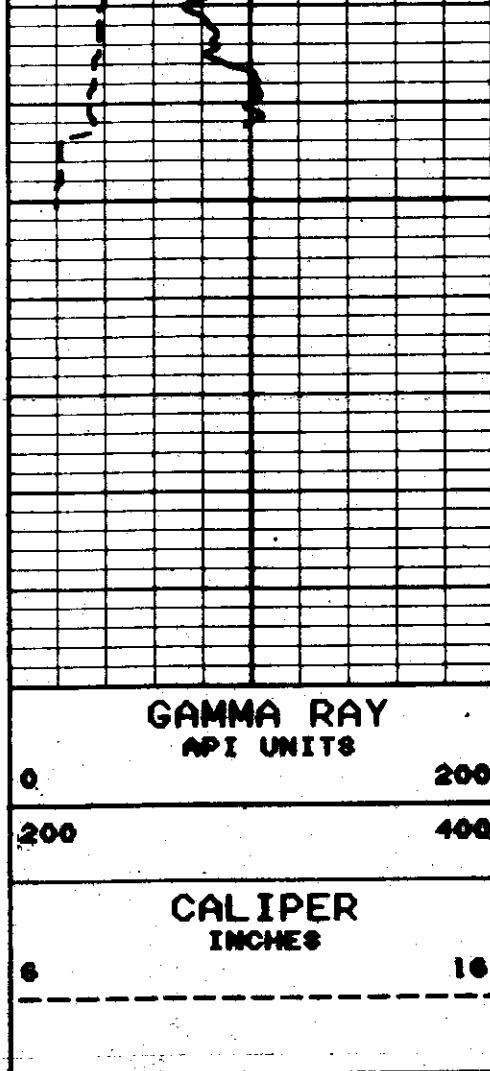
6800

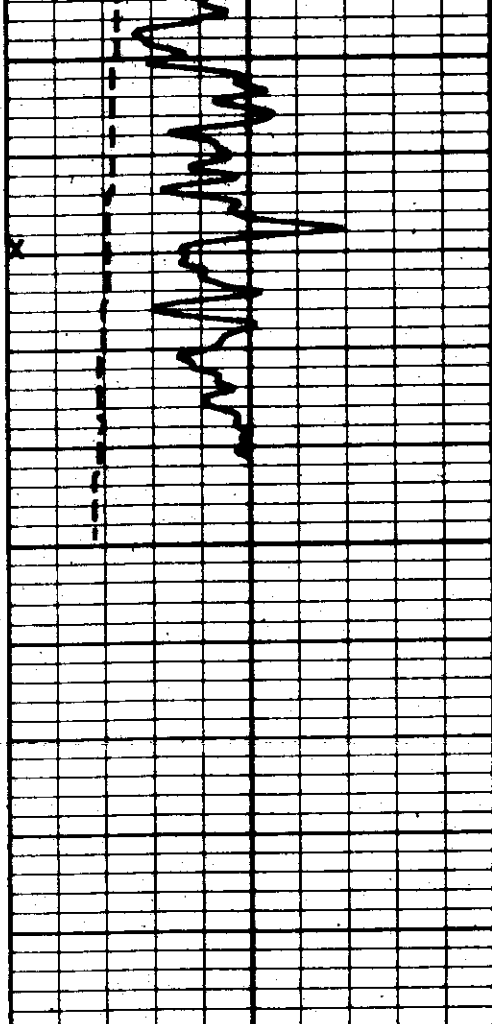
6700











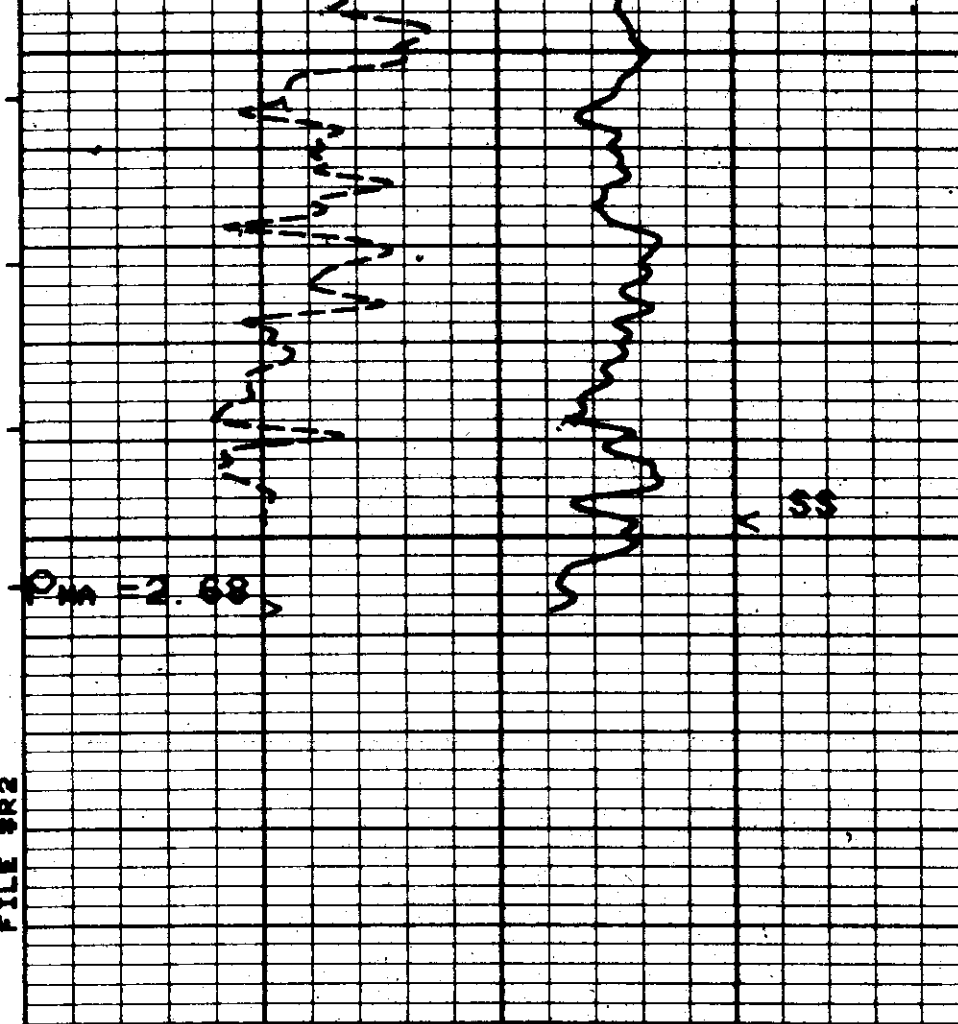
**GAMMA RAY**  
API UNITS

0 200  
200 400

**CALIPER**  
INCHES

6 16

7100  
FILE #R2  
7200



**DENSITY POROSITY**  
PERCENT

30.0 -10.0

**COMPENSATED N-N POROSITY**  
PERCENT

30.0 -10.0

**SONDE CALIBRATIONS**

GR 200 / 336  
DNSS AL 13750 / MG 27276  
DNLS AL 1328 / MG 8488  
BLOCKS AL = 2.630 MG = 1.755  
BCNN 1135 / 26017  
BCNF 1000 / 7065

**GAMMA RAY**  
API UNITS

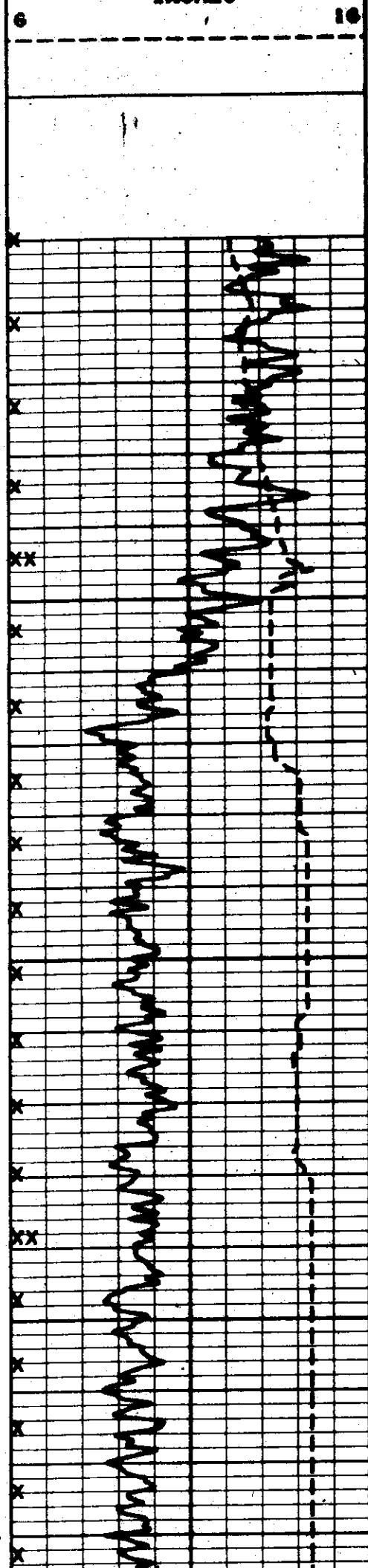
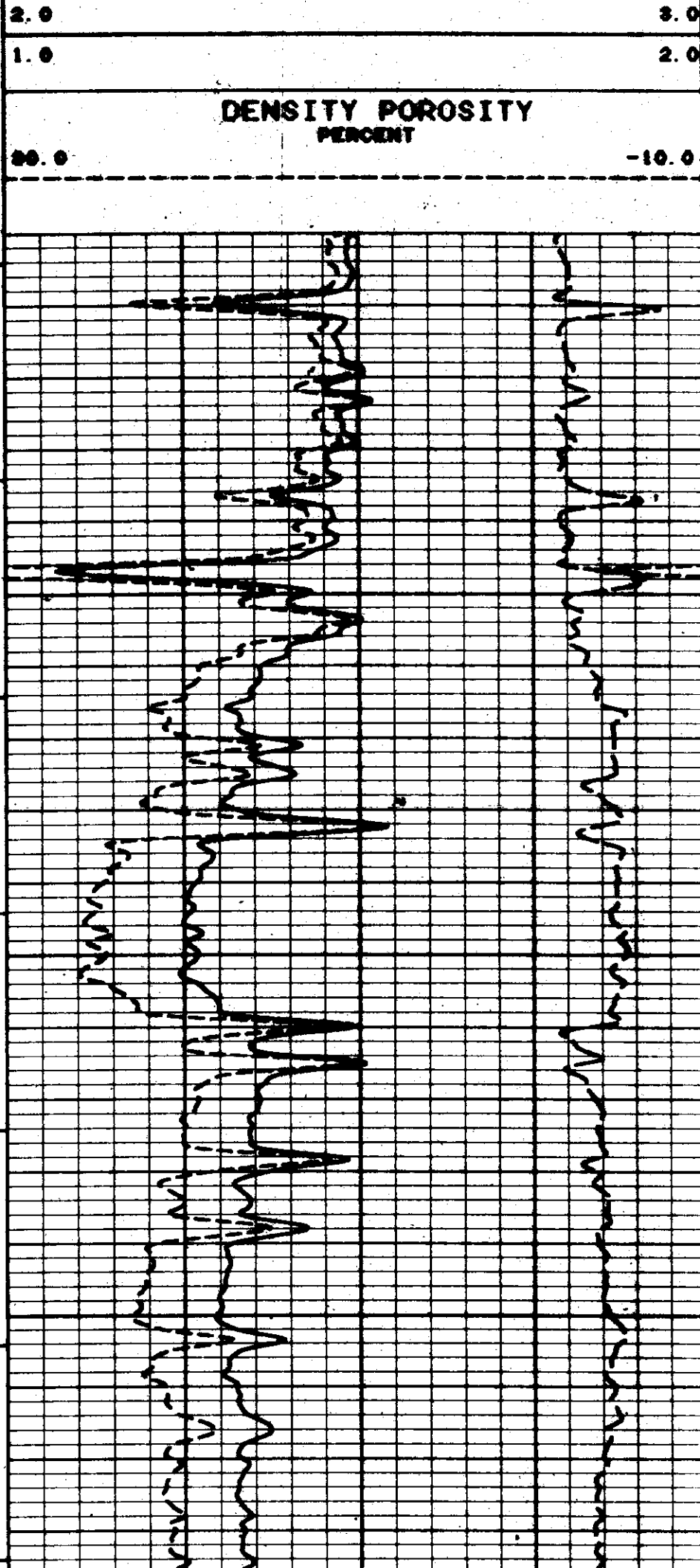
30 130  
130 230

**CALIPER**  
INCHES

**CORRECTION**  
GRAMS / CC

- .25 .25

**BULK DENSITY**  
GRAMS / CC



Handwritten scribbles at the top of the page.

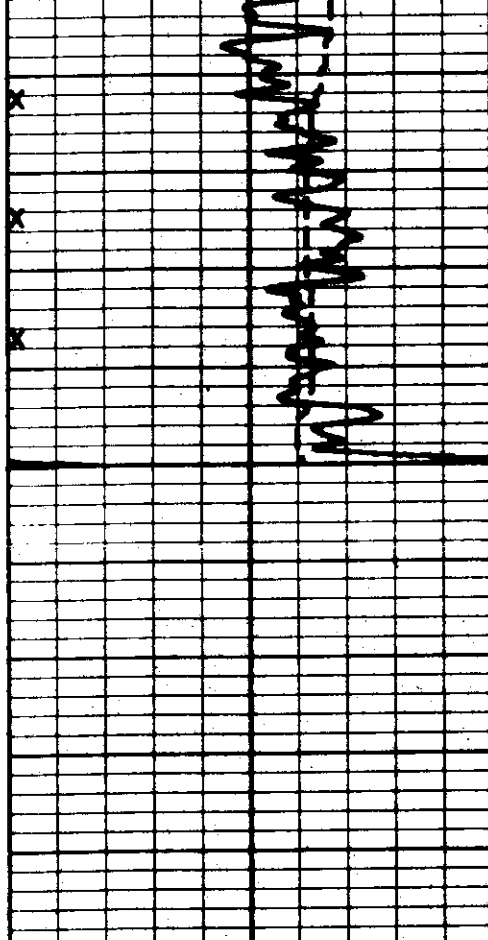
Handwritten scribbles in the middle section of the page.

3900

4000

Handwritten scribbles at the bottom of the page.

A vertical column of 'x' marks along the left edge of the page.



**GAMMA RAY**  
API UNITS

30 130

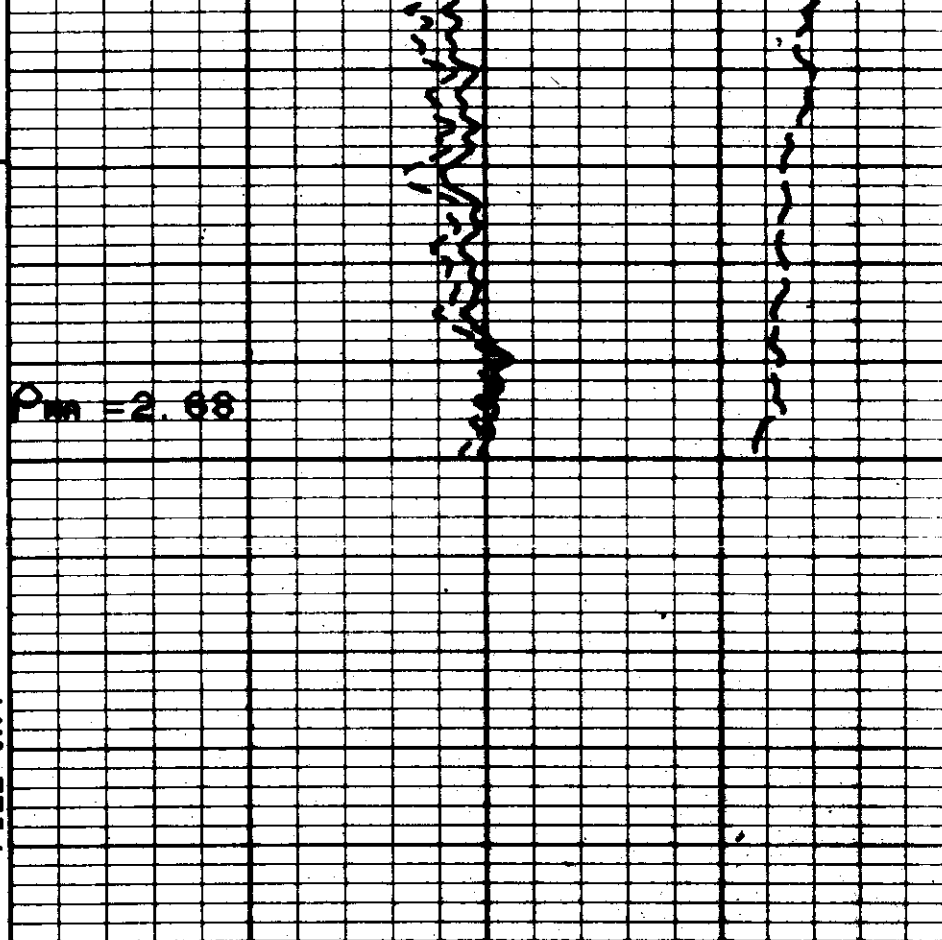
130 200

**CALIPER**  
INCHES

6 16

4100

FILE SR4



$\rho_{ma} = 2.68$

**CORRECTION**  
GRAMS / CC

- .25 .25

**BULK DENSITY**  
GRAMS / CC

2.0 3.0

1.0 2.0

**DENSITY POROSITY**  
PERCENT

30.0 -10.0

**GAMMA RAY**  
API UNITS

0 200

200 400

**CALIPER**  
INCHES

6 16

**CORRECTION**  
GRAMS / CC

- .25 .25

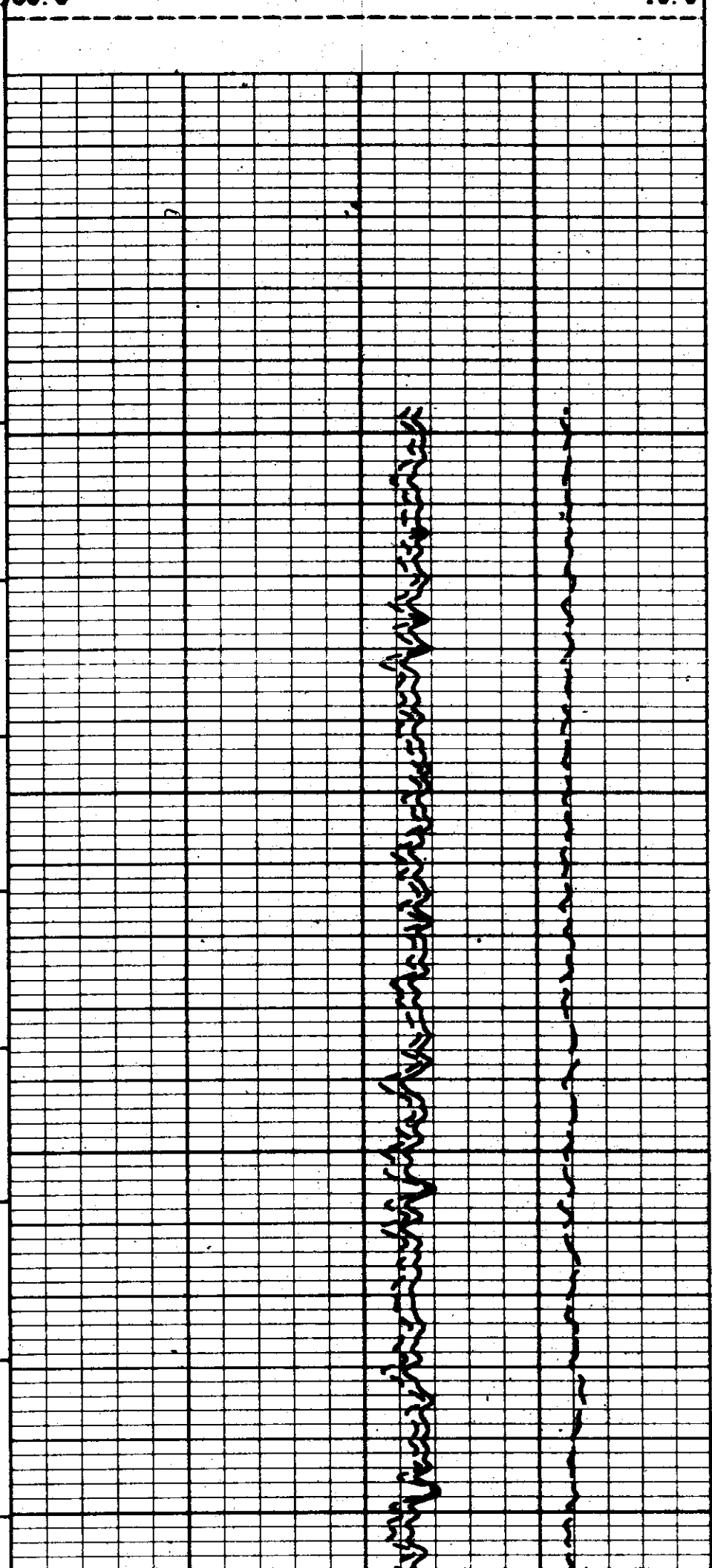
**BULK DENSITY**  
GRAMS / CC

2.0 3.0

1.0 2.0

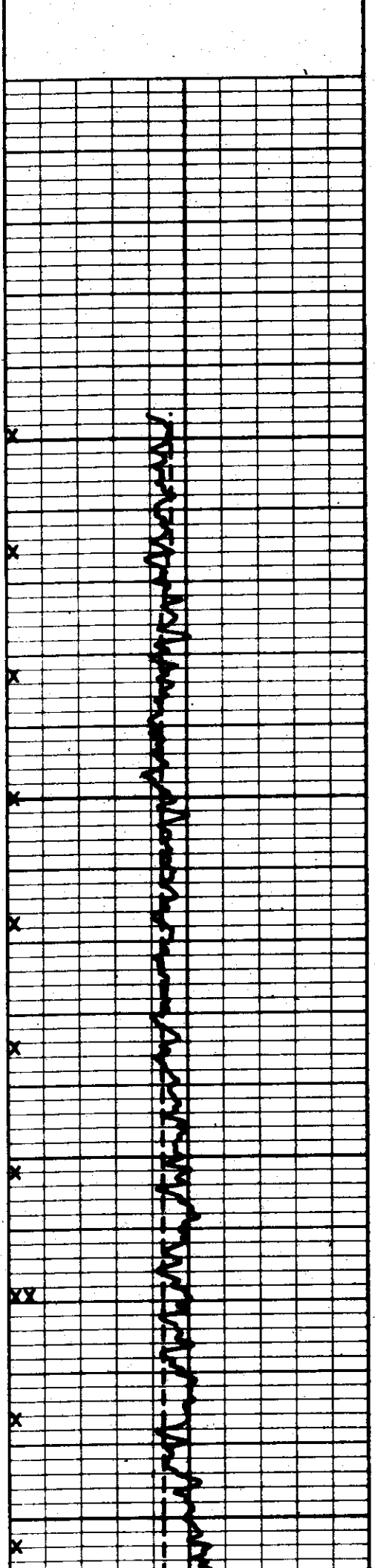
**DENSITY POROSITY**  
PERCENT

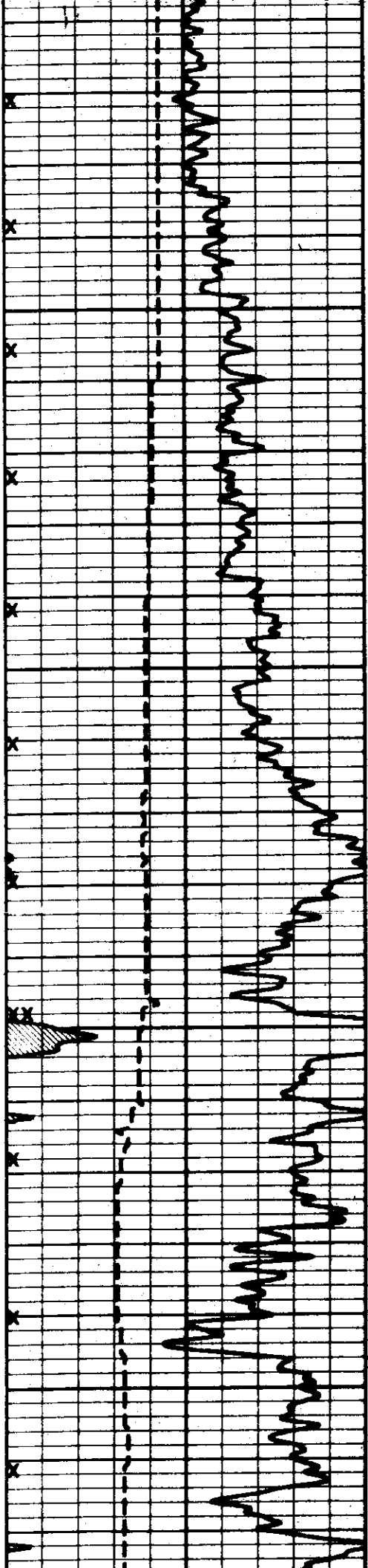
30.0 -10.0



6400

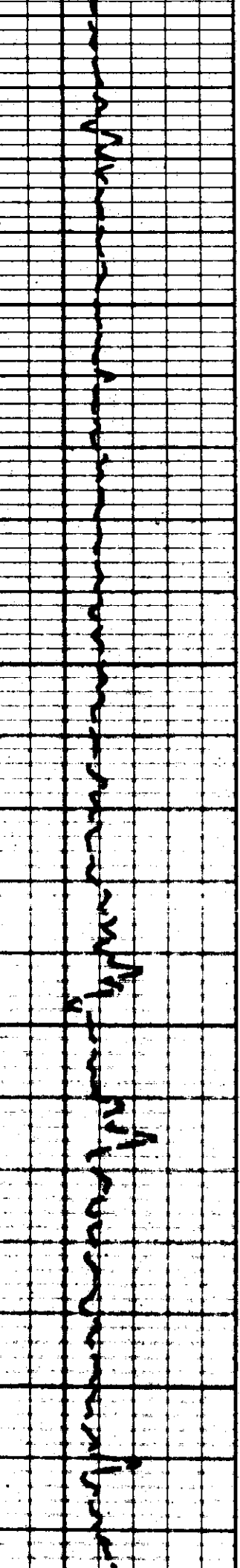
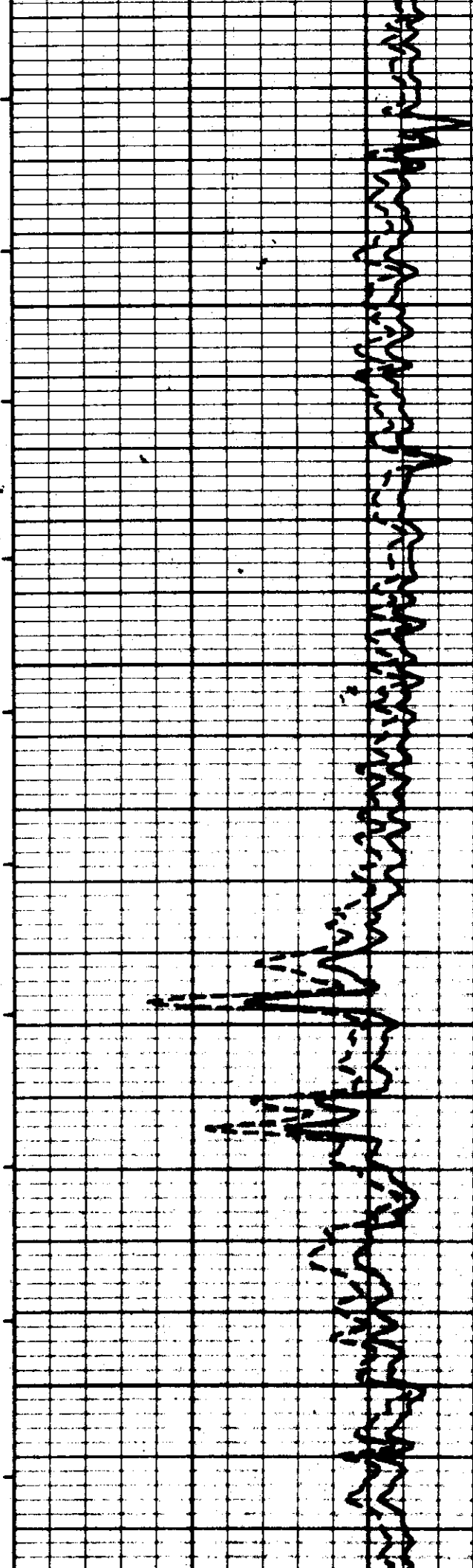
6500

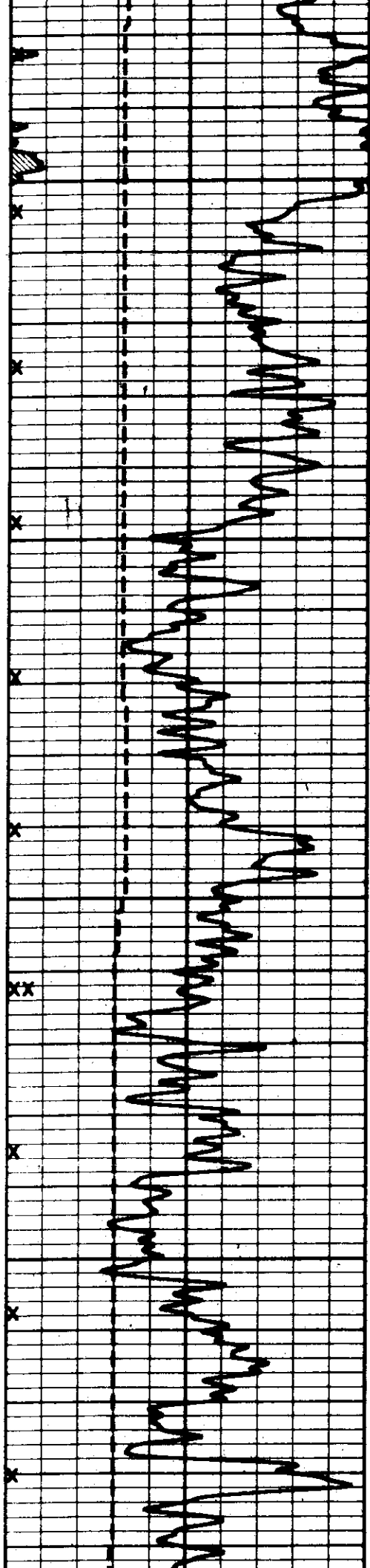




6600

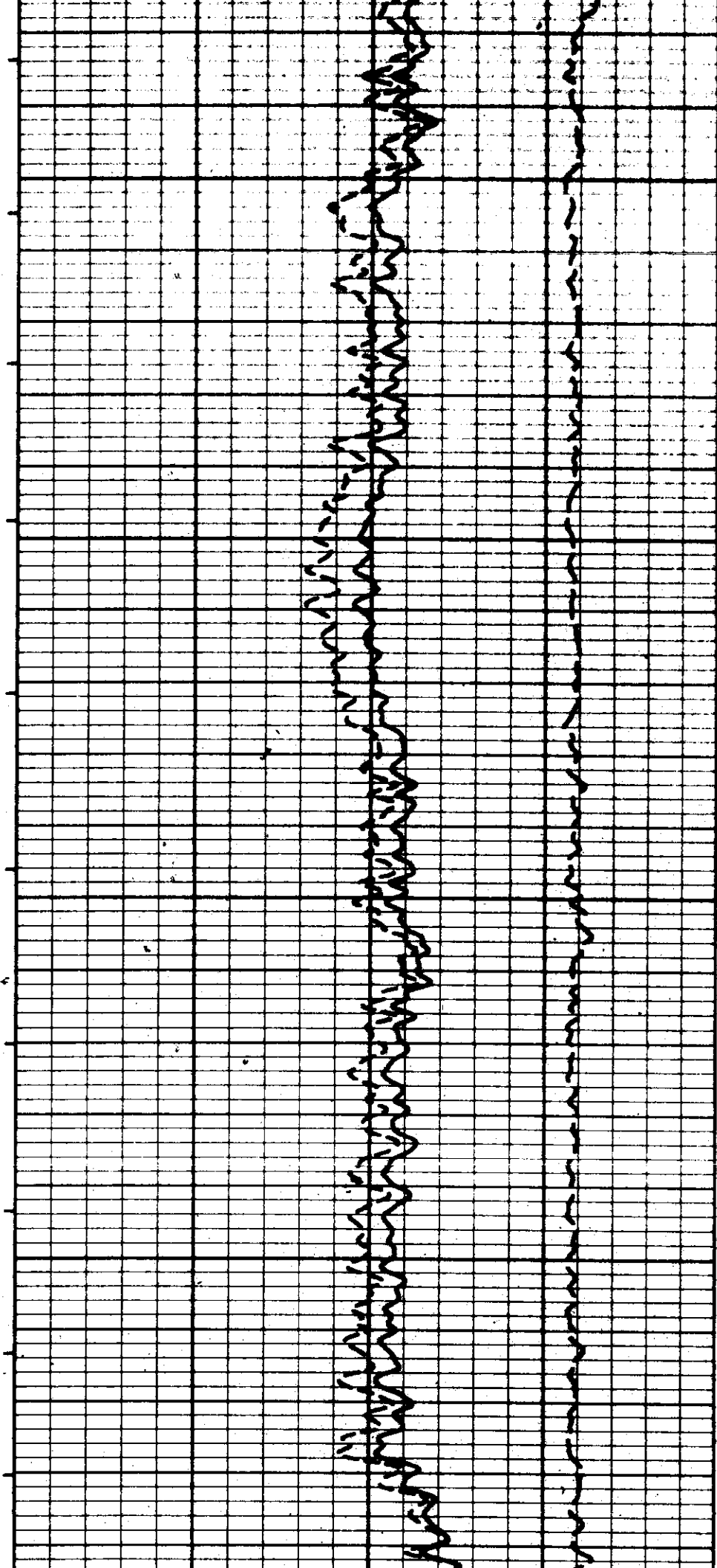
6700





0069

0080





7000

7100

7200

FILE #83

$\rho_{\text{MA}} = 2.71$

Minute Timebreak

Density Porosity

Bulk Density

$\rho_{\text{MA}} = 2.68$

GAMMA RAY  
API UNITS

CORRECTION  
GRAMS / CC

0

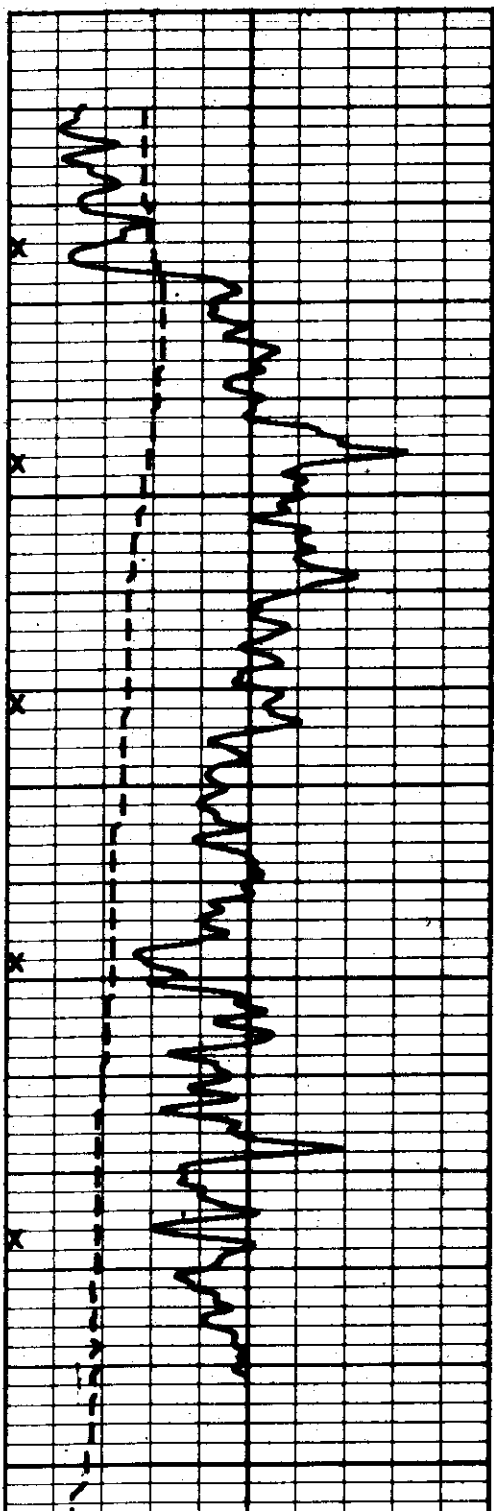
200

- .25

.25

200	400
<b>CALIPER</b> INCHES	
6	16
<hr/>	

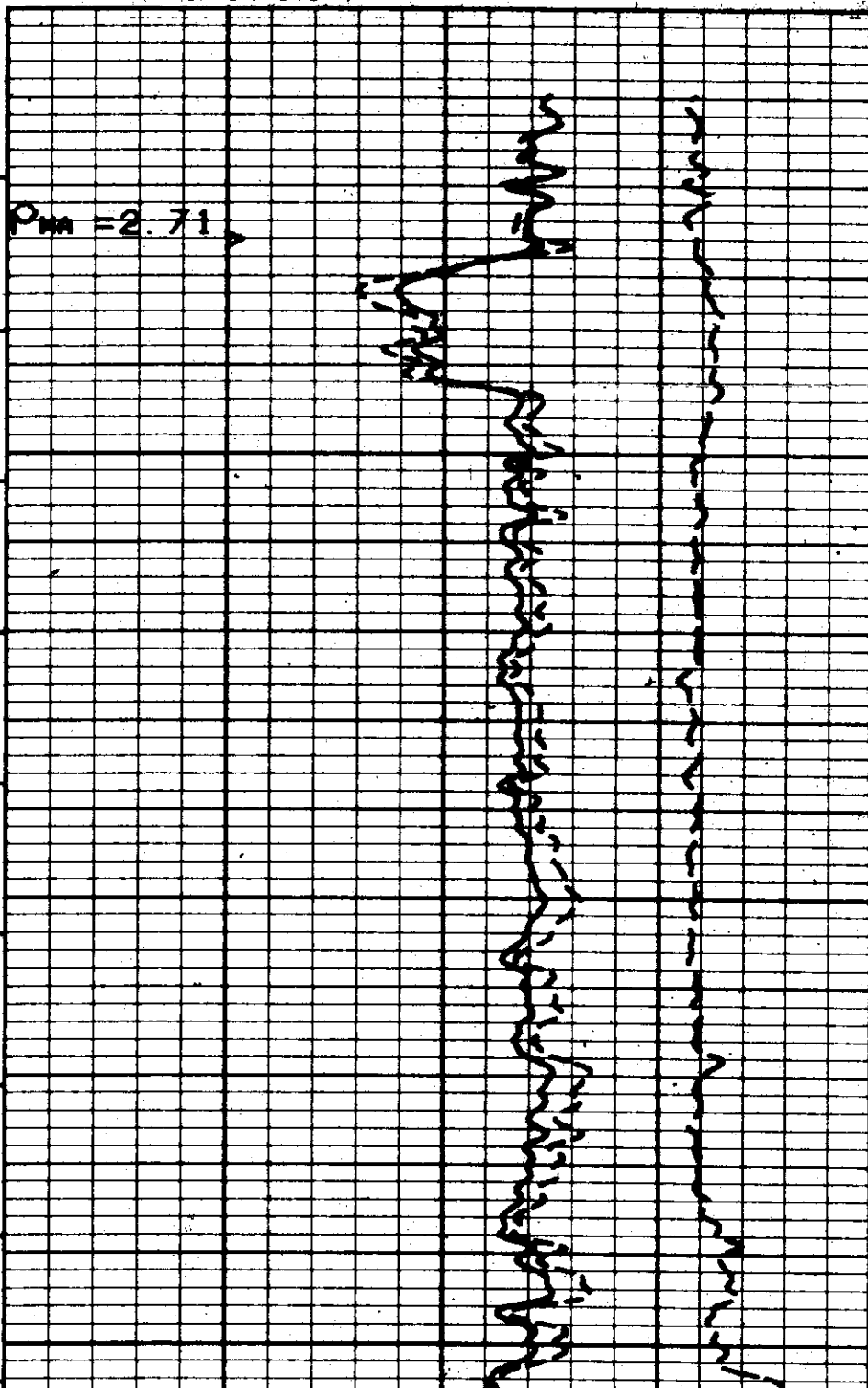
<b>BULK DENSITY</b> GRAMS / CC	
2.0	3.0
1.0	2.0
<b>DENSITY POROSITY</b> PERCENT	
30.0	-10.0
<hr/>	



7000

7100

**REPEAT SECTION**



FILE 8R2

7200

$\rho_{MA} = 2.68$

**GAMMA RAY  
API UNITS**

0 200

200 400

**CALIPER  
INCHES**

6 16

**CORRECTION  
GRAMS / CC**

- .25 .25

**BULK DENSITY  
GRAMS / CC**

2.0 3.0

1.0 2.0

**DENSITY POROSITY  
PERCENT**

30.0 -10.0

**SONDE CALIBRATIONS**

GR 200 / 336

DNSS AL 13750 / MG 27276

DNLS AL 1328 / MG 8488

BLOCKS AL = 2.630 MG = 1.755