



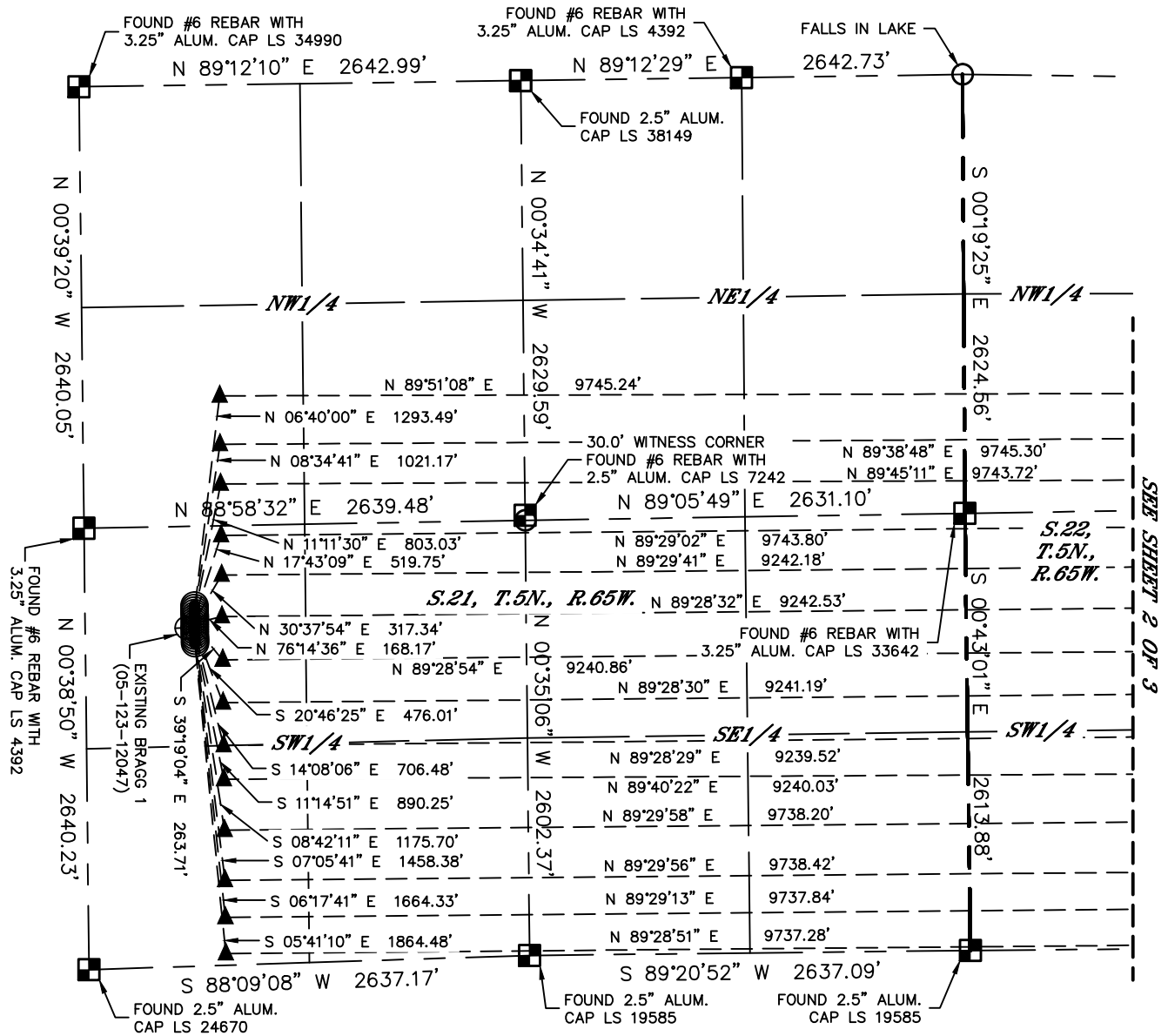
Lat40°, Inc. 6250 W. 10th Street, Unit 2, Greeley, CO 970-515-5294

# MULTI-WELL PLAN

ELBERT 3-16 PAD

THIS MAP DOES NOT REPRESENT A BOUNDARY SURVEY

SECTION: 21  
TOWNSHIP: 5N  
RANGE: 65W  
6TH. P.M.  
WELD COUNTY, CO

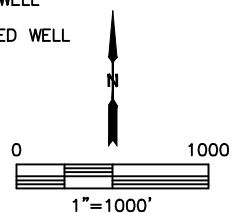


SEE SHEET 2 OF 3

#	WELL NAME	BHL FOOTAGE	BHL LAT°	BHL LONG°	BHL S-T-R
3	ELBERT 3N	1945 FNL 0 FEL	40.38656	-104.63990	22-5-65
4	ELBERT 4N	2200 FNL 0 FEL	40.38586	-104.63990	22-5-65
5	ELBERT 5N	2455 FNL 0 FEL	40.38516	-104.63990	22-5-65
6	ELBERT 6N	2530 FSL 0 FEL	40.38444	-104.63990	22-5-65
7	ELBERT 7N	2290 FSL 500 FEL	40.38379	-104.64170	22-5-65
8	ELBERT 8N	2045 FSL 500 FEL	40.38312	-104.64170	22-5-65
9	ELBERT 9N	1785 FSL 500 FEL	40.38240	-104.64170	22-5-65
10	ELBERT 10N	1530 FSL 500 FEL	40.38170	-104.64170	22-5-65
11	ELBERT 11N	1275 FSL 500 FEL	40.38100	-104.64170	22-5-65
12	ELBERT 12N	1040 FSL 500 FEL	40.38036	-104.64170	22-5-65
13	ELBERT 13N	765 FSL 0 FEL	40.37960	-104.63991	22-5-65
14	ELBERT 14N	465 FSL 0 FEL	40.37878	-104.63991	22-5-65
15	ELBERT 15N	245 FSL 0 FEL	40.37817	-104.63991	22-5-65
16	ELBERT 16N	30 FSL 0 FEL	40.37758	-104.63991	22-5-65

## LEGEND

- = ALIQUOT MONUMENT AS DESCRIBED
- = CALCULATED POSITION
- = SURFACE HOLE LOCATION (SHL)
- ▲ = ENTRY POINT LOCATION (EP)
- <sub>BH</sub> = BOTTOM HOLE LOCATION (BHL)
- ⊙ = EXISTING WELL
- ⊙ = ABANDONED WELL





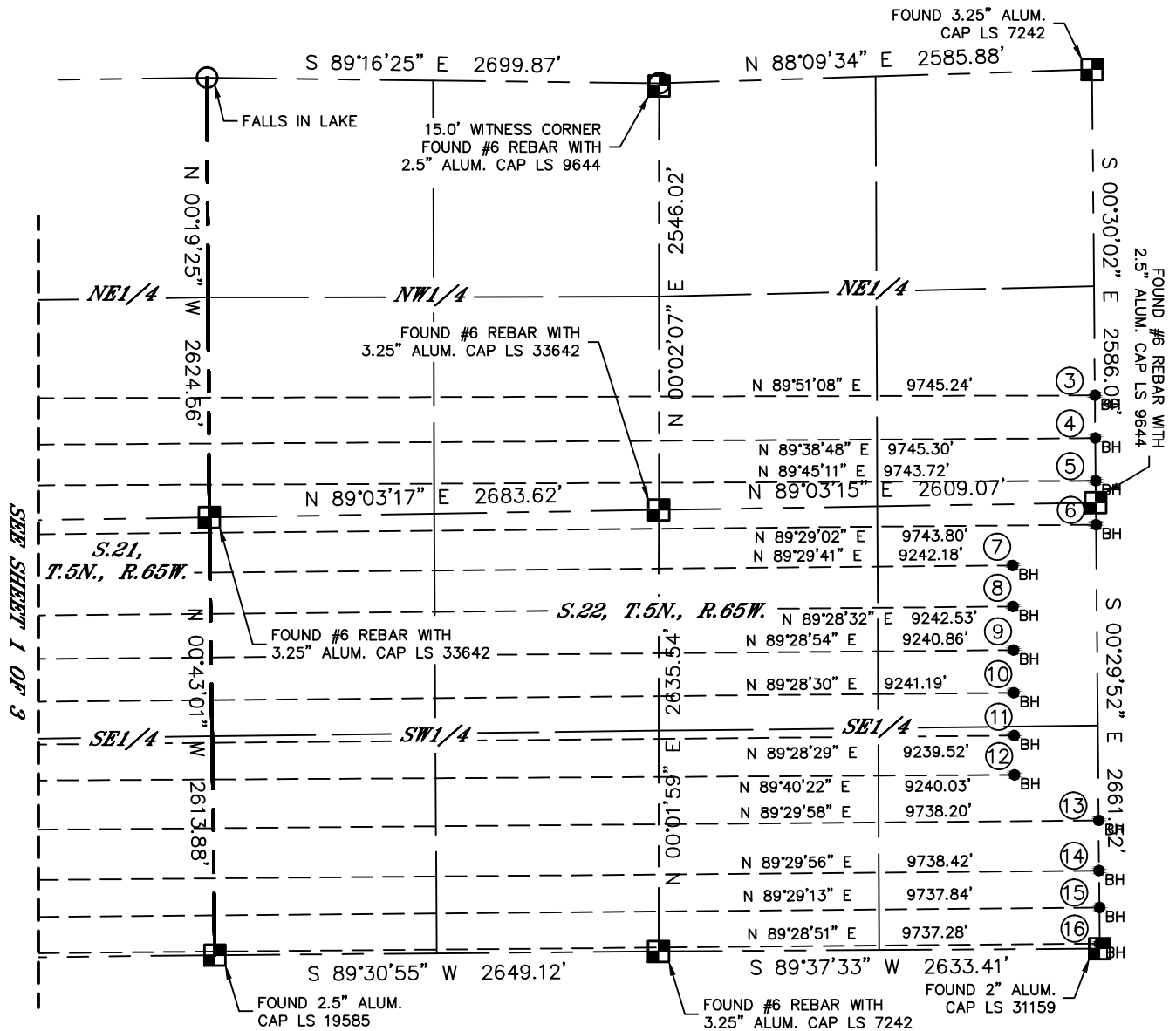
Lat40°, Inc. 6250 W. 10th Street, Unit 2, Greeley, CO 970-515-5294

# MULTI-WELL PLAN

ELBERT 3-16 PAD

THIS MAP DOES NOT REPRESENT A BOUNDARY SURVEY

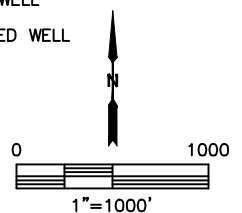
SECTION: 21  
TOWNSHIP: 5N  
RANGE: 65W  
6TH. P.M.  
WELD COUNTY, CO



#	WELL NAME	BHL FOOTAGE			BHL LAT °	BHL LONG °	BHL S-T-R
3	ELBERT 3N	1945	FNL	0	FEL	40.38656	-104.63990 22-5-65
4	ELBERT 4N	2200	FNL	0	FEL	40.38586	-104.63990 22-5-65
5	ELBERT 5N	2455	FNL	0	FEL	40.38516	-104.63990 22-5-65
6	ELBERT 6N	2530	FSL	0	FEL	40.38444	-104.63990 22-5-65
7	ELBERT 7N	2290	FSL	500	FEL	40.38379	-104.64170 22-5-65
8	ELBERT 8N	2045	FSL	500	FEL	40.38312	-104.64170 22-5-65
9	ELBERT 9N	1785	FSL	500	FEL	40.38240	-104.64170 22-5-65
10	ELBERT 10N	1530	FSL	500	FEL	40.38170	-104.64170 22-5-65
11	ELBERT 11N	1275	FSL	500	FEL	40.38100	-104.64170 22-5-65
12	ELBERT 12N	1040	FSL	500	FEL	40.38036	-104.64170 22-5-65
13	ELBERT 13N	765	FSL	0	FEL	40.37960	-104.63991 22-5-65
14	ELBERT 14N	465	FSL	0	FEL	40.37878	-104.63991 22-5-65
15	ELBERT 15N	245	FSL	0	FEL	40.37817	-104.63991 22-5-65
16	ELBERT 16N	30	FSL	0	FEL	40.37758	-104.63991 22-5-65

## LEGEND

- = ALIQUOT MONUMENT AS DESCRIBED
- = CALCULATED POSITION
- = SURFACE HOLE LOCATION (SHL)
- ▲ = ENTRY POINT LOCATION (EP)
- = BOTTOM HOLE LOCATION (BHL)
- ⊙ = EXISTING WELL
- ⊙ = ABANDONED WELL





Lat40°, Inc. 6250 W. 10th Street, Unit 2, Greeley, CO 970-515-5294

# MULTI-WELL PLAN

ELBERT 3-16 PAD

SECTION: 21  
TOWNSHIP: 5N  
RANGE: 65W  
6TH. P.M.  
WELD COUNTY, CO

