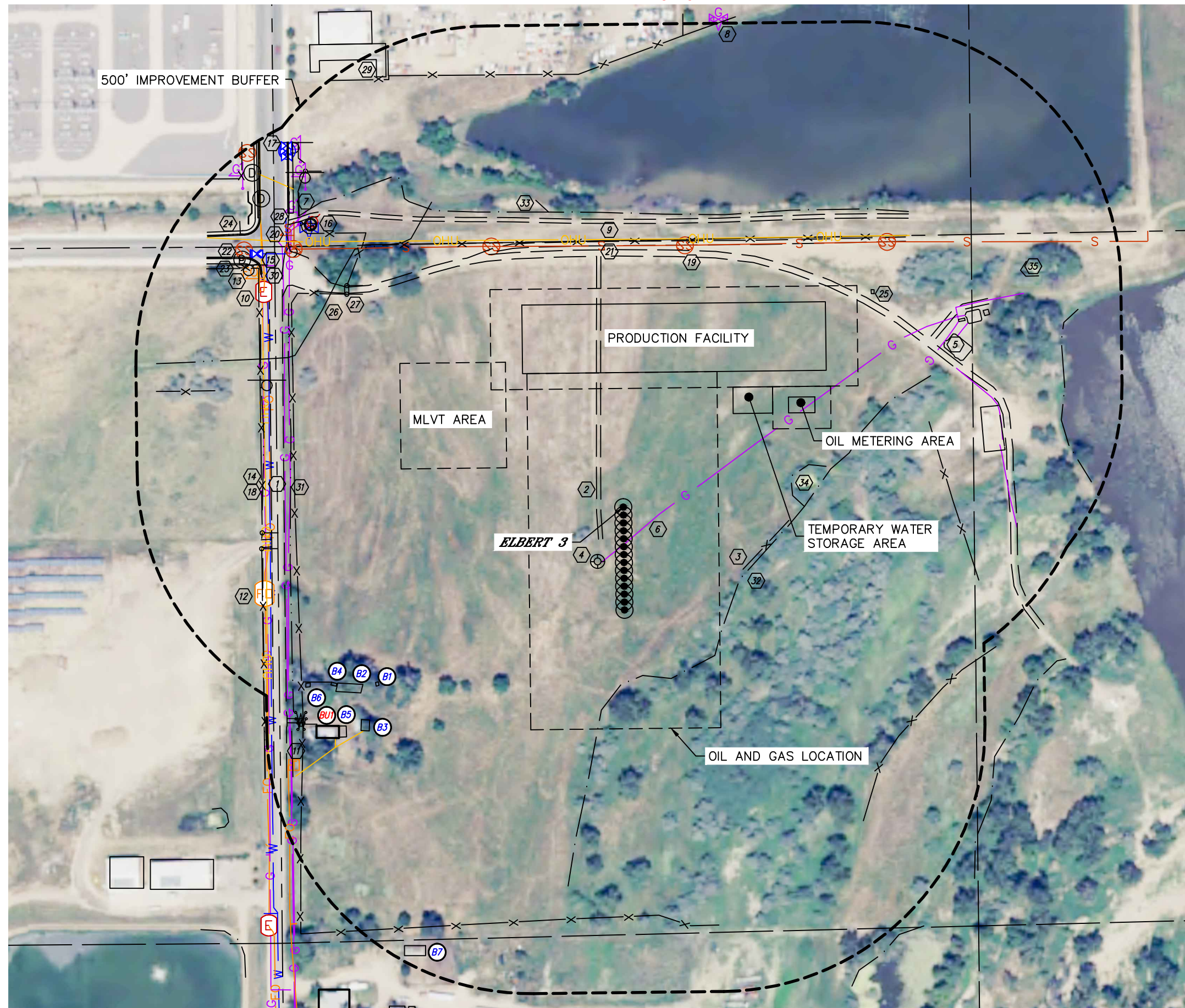




ELBERT 3-16 PAD

SECTION: 21
TOWNSHIP: 5N
RANGE: 65W
6TH. P.M.
WELD COUNTY, CO



SHEET 1 OF 2 DATE: 12/12/2016
PROJECT#: 2016085



Lat40°, Inc. 6250 W. 10th Street, Unit 2, Greeley, CO 970-515-5294

LOCATION DRAWING
ELBERT 3-16 PAD

SECTION: 21
TOWNSHIP: 5N
RANGE: 65W
6TH. P.M.
WELD COUNTY, CO

IMPROVEMENTS:
(MEASURED FROM THE PROPOSED ELBERT 3 WELL LOCATION)

- BU1

BUILDING UNIT BU1 680' SW

B1

BUILDING B1 570' SW, B2 597' SW, B3 628' SW, B4 637' SW, B5 669' SW, B6 680' SW, B7 911' SW

1

1ST AVENUE 643' W

2

ROAD/EDGE OF GRAVEL 43' W, 476', 496' & 538' N, 660' NE, 669' & 728' SW

3

FENCE 255' & 678' SE, 505' N, 601' NE, 622' & 685' W, 804', 890' & 954' NW, 776' S

4

EXISTING WELL HEAD 114' SW

5

EXISTING PRODUCTION EQUIPMENT 679', 726', 740' & 775' NE (PDC), 692' NE (NOBLE)

6

GAS LINE LOCATES ±54' SE (PDC), ±632' & ±640' W, ±662' & ±712' NE (DCP), ±679' W (ATMOS), ±723' NE (NOBLE)

7

GAS MARKER 816', 852', 896' & 941' NW

8

GAS VALVE 942' NE

9

OVERHEAD UTILITY LINE 508' N, 677' W, 651' SW, 869' NW

10

ELECTRIC VAULT 794' NW

11

TELEPHONE PEDESTAL 793' SW

12

FIBER OPTIC VAULT 699' SW

13

FIBER OPTIC MARKER 801' NW

14

FIBER OPTIC LINE LOCATES ±669' W, ±793' SW

15

WATER VALVE (3) 843' NW, 921', 930' & 936' NW

16

AIR VALVE 797' NW

17

WATER MANHOLE 928' NW

18

WATER LINE LOCATES ±670' W, ±798' NW

19

SANITARY SEWER MANHOLE 510' & 709' NE, 554', 793', 868' & 979' NW

20

SANITARY SEWER MARKER 794' NW

21

SANITARY SEWER LINE LOCATES ±496' N

22

STORM DRAIN MANHOLE 861', 901' & 946' NW

23

STORM DRAIN INLET 858', 868', 888' & 909' NW

24

STORM DRAIN LINE LOCATES ±892' NW

25

IRRIGATION WELL 620' NE, 789' & 799' NW

26

PIPE 649', 682' & 697' NW

27

BRIDGE 658' NW

28

WALL 826' & 890' NW

29

CONCRETE STRUCTURE 931' NW

30

FLOWLINE/CURB & GUTTER/ATTACHED SIDEWALK 816', 844' & 874' NW

31

BARROW DITCH 631' & 683' W

32

DITCH 259' SE, 681' & 745' NW

33

CANAL 577' NW

34

POND 321' & 846' NE, 557' N

35

LOW AREA 879' NE