



Lat40°, Inc. 6250 W. 10th Street, Unit 2, Greeley, CO 970-515-5294

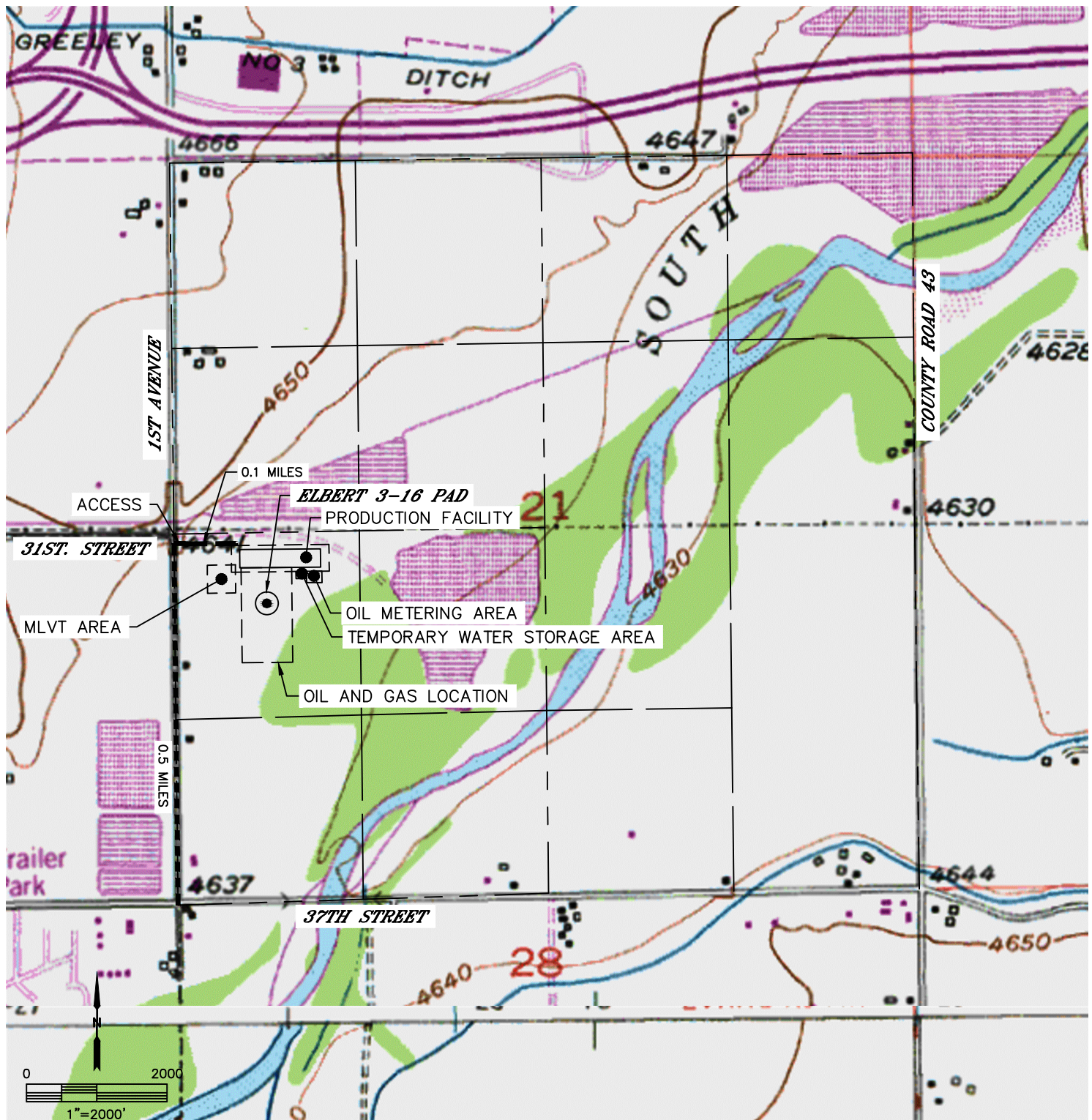
ACCESS ROAD MAP

ELBERT 3-16 PAD

SECTION: 21
TOWNSHIP: 5N
RANGE: 65W
6TH. P.M.
WELD COUNTY, CO

DRIVING DIRECTIONS TO ELBERT 3-16 PAD

FROM THE INTERSECTION OF 1ST AVENUE AND 37TH STREET, GO NORTH ON 1ST AVENUE FOR 0.5 MILES TO AN EXISTING ACCESS TO THE EAST. THEN GO EAST FOR 0.1 MILES TO THE PROPOSED PRODUCTION FACILITY AND WELL PAD.





Lat40°, Inc. 6250 W. 10th Street, Unit 2, Greeley, CO 970-515-5294

ACCESS ROAD MAP

ELBERT 3-16 PAD

SECTION: 21
TOWNSHIP: 5N
RANGE: 65W
6TH. P.M.
WELD COUNTY, CO

