



Photo#1: View of Location from Entry to NE.

January 30, 2017

Inspection Photos: Ursa Weinreis ALs

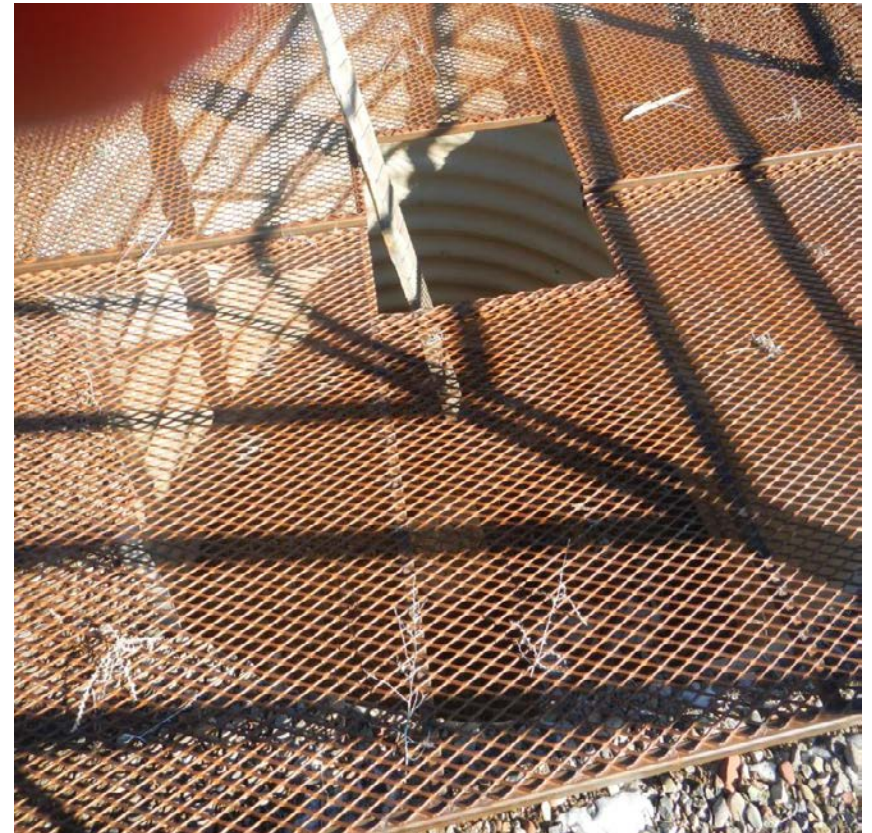


Photo#2:

AL Well with Conductor Set ; Operator has met Safety Standards for Maintaining a Preset Conductor.



Photo#3:







Photo#4: View of Well Corral to SE.

Inspection Photos: Ursa Weinreis ALs

January 30, 2017



Photo#5:

AL Well with Conductor Set ; Operator has met Safety Standards for Maintaining a Preset Conductor

