

T7N, R90W, 6th P.M.

SWN PRODUCTION COMPANY, LLC

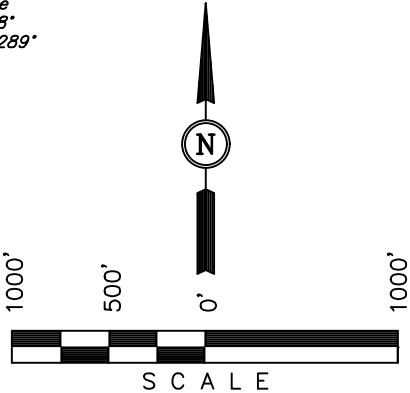
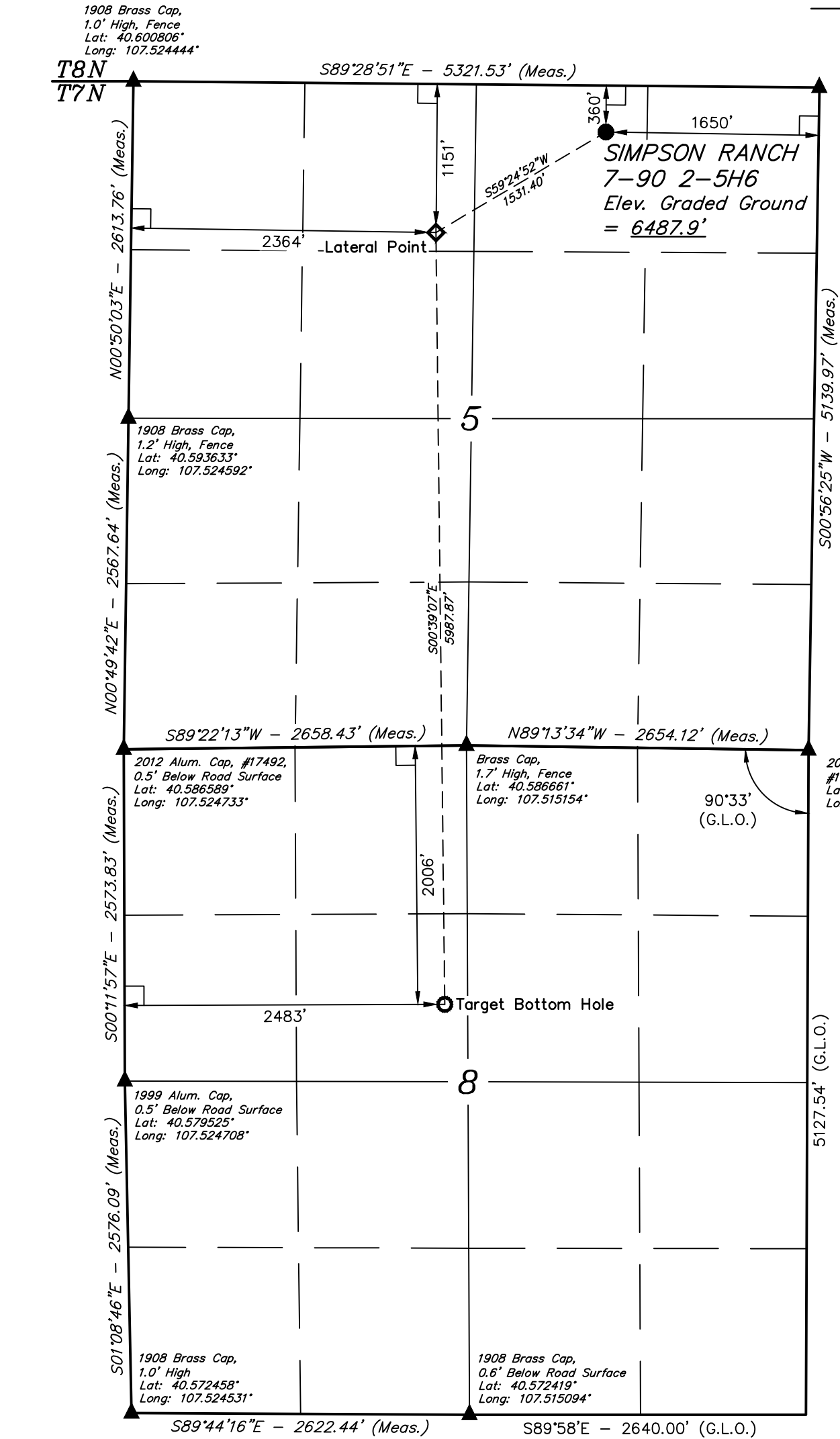
Well location, SIMPSON RANCH 7-90 2-5H6 located as shown in the NW 1/4 NE 1/4 of Section 5, T7N, R90W, 6th P.M., Moffat County, Colorado.

BASIS OF ELEVATION

SPOT ELEVATION LOCATED AT THE SOUTHWEST CORNER OF SECTION 15, T7N, R91W, 6th P.M. TAKEN FROM THE CRAIG QUADRANGLE, COLORADO, MOFFAT COUNTY, 7.5 MINUTE QUAD (TOPOGRAPHIC MAP) PUBLISHED BY THE UNITED STATES DEPARTMENT OF THE INTERIOR, GEOLOGICAL SURVEY. SAID ELEVATION IS MARKED AS BEING 6672 FEET.

BASIS OF BEARINGS

BASIS OF BEARINGS IS A G.P.S. OBSERVATION.



LEGEND:

- └─ = 90° SYMBOL
- = PROPOSED WELLHEAD.
- ◆ = LATERAL POINT
- = TARGET BOTTOM HOLE.
- ▲ = SECTION CORNERS LOCATED. (NAD 83)

PDOP = 1.5

NAD 83 (TARGET BOTTOM HOLE)	NAD 83 (LATERAL POINT)	NAD 83 (SURFACE LOCATION)
LATITUDE = 40°34'52.15" (40.581153)	LATITUDE = 40°35'51.29" (40.597581)	LATITUDE = 40°35'58.98" (40.599717)
LONGITUDE = 107°30'56.79" (107.515775)	LONGITUDE = 107°30'57.60" (107.516000)	LONGITUDE = 107°30'40.51" (107.511253)
NAD 27 (TARGET BOTTOM HOLE)	NAD 27 (LATERAL POINT)	NAD 27 (SURFACE LOCATION)
LATITUDE = 40°34'52.25" (40.581181)	LATITUDE = 40°35'51.40" (40.597611)	LATITUDE = 40°35'59.08" (40.599744)
LONGITUDE = 107°30'54.56" (107.515156)	LONGITUDE = 107°30'55.37" (107.515381)	LONGITUDE = 107°30'38.28" (107.510633)
STATE PLANE NAD 83 (CO. NORTH)	STATE PLANE NAD 83 (CO. NORTH)	STATE PLANE NAD 83 (CO. NORTH)
N: 1460918.73 E: 2440133.89	N: 1466904.10 E: 2440207.62	N: 1467651.60 E: 2441543.60
STATE PLANE NAD 27 (CO. NORTH)	STATE PLANE NAD 27 (CO. NORTH)	STATE PLANE NAD 27 (CO. NORTH)
N: 460917.55 E: 1440291.42	N: 466902.88 E: 1440365.14	N: 467650.38 E: 1441701.11

CERTIFICATE

THIS IS TO CERTIFY THAT THE ABOVE PLAT WAS PREPARED FROM FIELD NOTES OF ACTUAL SURVEYS MADE BY ME OR UNDER MY SUPERVISION AND THAT THE SAME ARE TRUE AND CORRECT TO THE BEST OF MY KNOWLEDGE AND BELIEF.

REGISTERED LAND SURVEYOR  
REGISTRATION NO. 38130  
STATE OF COLORADO



REV: 3 01-18-17 B.D.H. (LATERAL POINT & BOTTOM HOLE CHANGE)

UINTAH ENGINEERING & LAND SURVEYING  
85 SOUTH 200 EAST - VERNAL, UTAH 84078  
(435) 789-1017

SCALE 1" = 1000'	DATE SURVEYED: 07-15-15	DATE DRAWN: 09-01-15
PARTY B.H. N.F. C.D.L.	REFERENCES G.L.O. PLAT	
WEATHER COLD	FILE SWN PRODUCTION COMPANY, LLC	