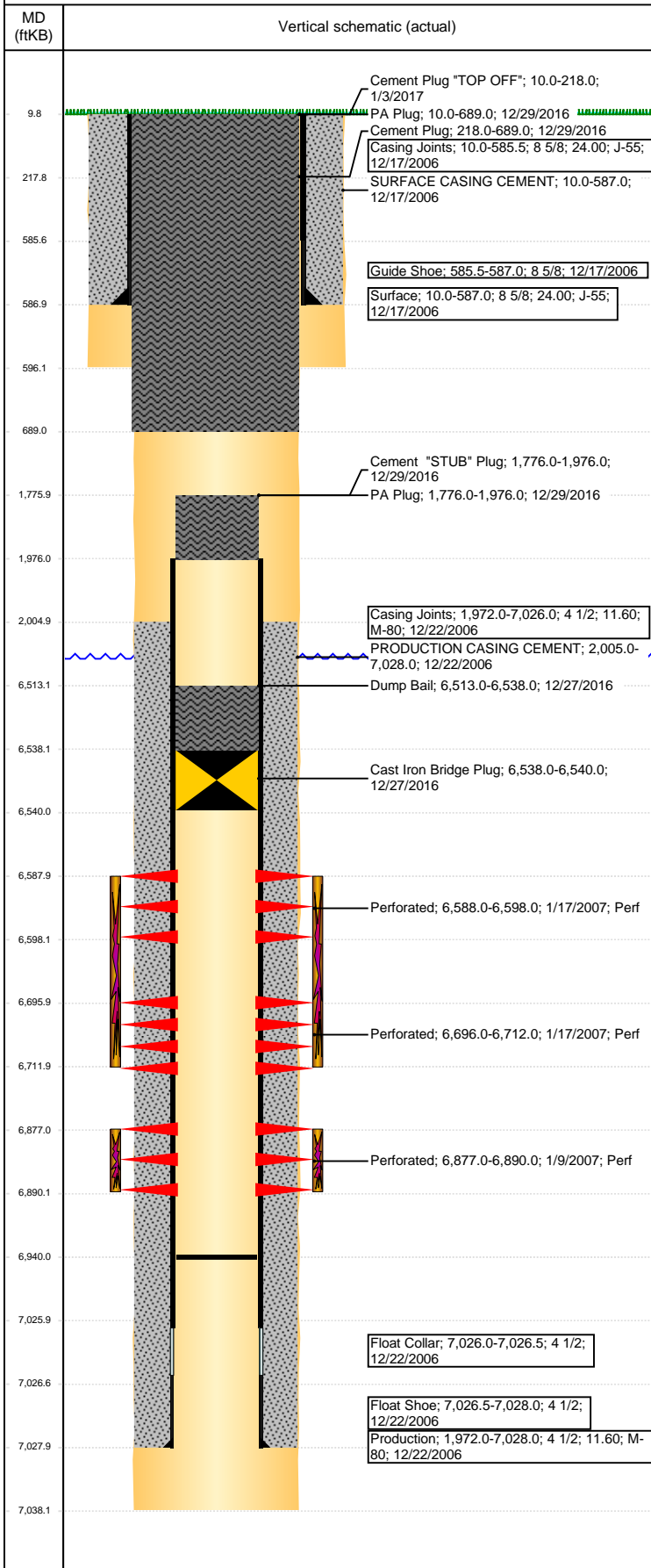


Well Name: KLEIN B19-19

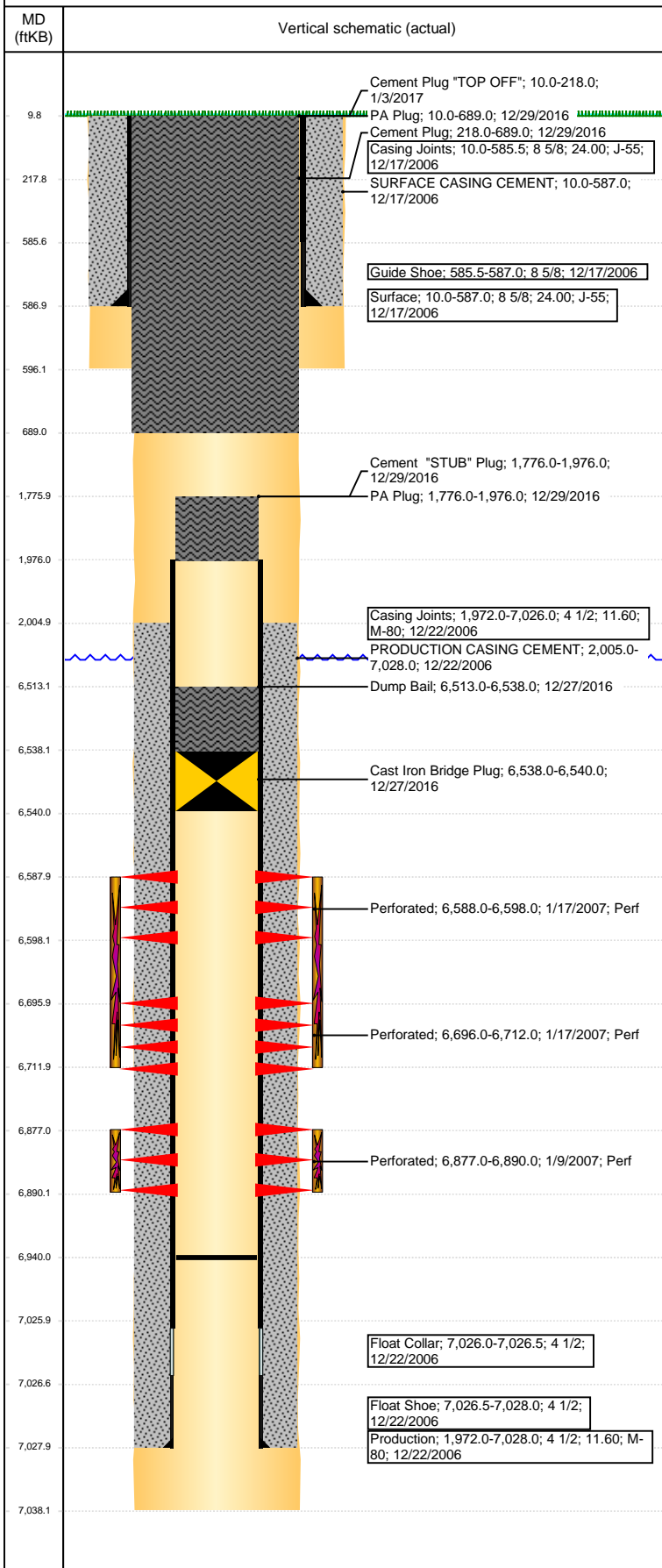
VERTICAL - ORIGINAL HOLE, 1/31/2017 9:51:06 AM



Well Header							
API 05-123-24370	Business Unit DJ BASIN		District 15		Well Config VERTICAL		
Original KB Elevation (ft) 4,633	KB - GL / MSL (ftKB) 10.00		Spud Date 12/16/2006		P & A Date 12/29/2016		
Comment PUSH FP TO 6940 STATE HAS WRONG NIO PERF INTERVAL. IT IS BEING CORRECTED.							
Directions To Well HWY 34 & 51, S 1/2, ON NS OF HOUSE GO W 1/2, N 3/10, W 2/10 INTO							
Congressional Location							
Quarter 3 SE	Quarter 4 NW	Section 19	Township 5	Twntshp N/S Dir N	Range 64	Range E/W Dir W	
Bottom Hole Location							
North-South Distance (ft)		From N or S Line		East-West Distance (ft)		From E or W Line	
Plug Back Total Depths							
Date	Depth (ftKB)	Method		Com			
12/22/2006	7,013.0	CASING TALLY		FLOAT SHOE W/ BAFFLE			
1/4/2007	6,995.0	CASED HOLE LOG		DEPTH LOGGER ON CBL			
3/5/2007	6,940.0	TAG		DRILLED OUT CIPF TO LAND TUBING			
Wellbore Sections							
Section Des		Size (in)		Act Top, MD (ftKB)		Act Btm, MD (ftKB)	
SURFACE		12 1/4		10		596	
PRODUCTION		7 7/8		596		7,038	
Zone Statuses							
Zone Name	Status Date	Status	Fluid Type	Job	Prod Method		
CODELL	1/20/2007	PR	Water	DRILLING/CO...	Flowing		
CODELL	2/11/2010	PR					
CODELL	12/27/2016	P&A		ABANDON WE...			
NIOBRARA	1/20/2007	PR	Water	DRILLING/CO...	Flowing		
NIOBRARA	2/11/2010	PR					
NIOBRARA	10/27/2016	SI		ABANDON WE...			
NIOBRARA	12/27/2016	P&A					
Casing Strings							
Surface, 587.0ftKB							
Casing Description Surface	Run Date 12/17/2006	OD (in) 8 5/8	Wt/Len (l...) 24.00	Grade J-55	Top, MD (ft...) 10.0	MD (ftKB) 587.0	
Production, 7,028.0ftKB							
Casing Description Production	Run Date 12/22/2006	OD (in) 4 1/2	Wt/Len (l...) 11.60	Grade M-80	Top, MD (ft...) 10.0	MD (ftKB) 7,028.0	
Cement							
Description SURFACE CASING CEMENT				Top Depth (ftKB) 10.0		Bottom Depth (ftKB) 587.0	
Description PRODUCTION CASING CEMENT				Top Depth (ftKB) 2,005.0		Bottom Depth (ftKB) 7,028.0	
Description Dump Bail				Top Depth (ftKB) 6,513.0		Bottom Depth (ftKB) 6,538.0	
Description Cement "STUB" Plug				Top Depth (ftKB) 1,776.0		Bottom Depth (ftKB) 1,976.0	
Description Cement Plug				Top Depth (ftKB) 218.0		Bottom Depth (ftKB) 689.0	
Description PA Plug				Top Depth (ftKB) 1,776.0		Bottom Depth (ftKB) 1,976.0	
Description PA Plug				Top Depth (ftKB) 10.0		Bottom Depth (ftKB) 689.0	
Description Cement Plug "TOP OFF"				Top Depth (ftKB) 10.0		Bottom Depth (ftKB) 218.0	
Tubing Strings							
Tubing Description Tubing	Run Date 3/6/2007	String... 2 3/8	ID (in) 2.00	Wt (lb/ft) 4.70	Grade J-55	Len (ft) 6,856.00	Set De...
Other In Hole							
Run Date	Des			OD (in)	Top (ftKB)	Btm (ftKB)	
12/27/2016	Cast Iron Bridge Plug			3.99	6,538.0	6,540.0	
Logs							
Date	Type				Top, MD (ftKB)	Btm, MD (ftKB)	
12/20/2006	COMPENSATED DENSITY				2,500.0	7,016.0	
12/20/2006	INDUCTION				587.0	7,036.0	
1/4/2007	CBL/CCL/GR				1,860.0	6,993.0	

Well Name: KLEIN B19-19

VERTICAL - ORIGINAL HOLE, 1/31/2017 9:51:07 AM



Logs			
Date	Type	Top, MD (ftKB)	Btm, MD (ftKB)
12/22/2016	GYRO	0.0	6,886.0

Perforation Data					
Linked Zone	Bnch/St g	Sum of Entered Shot Total	Top (ftKB)	Btm (ftKB)	Date
NIOBRARA, ORIGINAL HOLE		60	6,588.00	6,598.00	1/17/2007
NIOBRARA, ORIGINAL HOLE		96	6,696.00	6,712.00	1/17/2007
CODELL, ORIGINAL HOLE		52	6,877.00	6,890.00	1/9/2007
Total (Sum)		208			

Stimulation Intervals		
Start Date 1/17/2007	Primary Job Type DRILLING/COMPLETION - ORIGINAL	
Technical Result	Tech Result Details	Tech Result Note
Comment		
Start Date 1/17/2007	Primary Job Type DRILLING/COMPLETION - ORIGINAL	
Technical Result	Tech Result Details	Tech Result Note
Comment		