

HALLIBURTON

iCem[®] Service

EXTRACTION OIL & GAS

Breniman #6

Surface

Job Date: Wednesday, June 01, 2016

Sincerely,

Derek Trier

Legal Notice

Warning Disclaimer

Although the information contained in this report is based on sound engineering practices, the copyright owner(s) does (do) not accept any responsibility whatsoever, in negligence or otherwise, for any loss or damage arising from the possession or use of the report whether in terms of correctness or otherwise. The application, therefore, by the user of this report or any part thereof, is solely at the user's own risk.

Limitations of Liability

Except as expressly set forth herein, there are no representations or warranties by Halliburton, express or implied, including implied warranties of merchantability and/or fitness for a particular purpose. In no event will Halliburton or its suppliers be liable for consequential, incidental, special, punitive or exemplary damages (including, without limitation, loss of data, profits, use of hardware, or software). Customer accepts full responsibility for any investment made based on results from the Software. Any interpretations, analyses or modeling of any data, including, but not limited to Customer data, and any recommendation or decisions based upon such interpretations, analyses or modeling are opinions based upon inferences from measurements and empirical relationships and assumptions, which inferences and assumptions are not infallible, and with respect to which professional may differ. Accordingly, Halliburton cannot and does not warrant the accuracy, correctness or completeness of any such interpretation, recommendation, modeling or other products of the Software Product. As such, any interpretation, recommendation or modeling resulting from the Software for the purpose of any drilling, well treatment, production or financial decision will be at the sole risk of Customer. Under no circumstances will Halliburton or its suppliers be liable for any damages.

Table of Contents

1.0 Cementing Job Summary 4

 1.1 Executive Summary4

2.0 Real-Time Job Summary 7

 2.1 Job Event Log7

1.0 Cementing Job Summary

1.1 Executive Summary

Halliburton appreciates the opportunity to perform the cementing services on the **Breniman 6** cement **Surface** casing job. A pre-job safety meeting was held before the job where details of the job were discussed, potential safety hazards were reviewed, and environmental compliance procedures were outlined.

Halliburton maintains a continuous quality improvement process and appreciates any comments or suggestions that you may have. Halliburton again thanks you for the opportunity to perform service work on this well. We hope to be your solutions provider for future projects.

Respectfully,

Halliburton [Ft. Lupton]

Job Times

	Date	Time	Time Zone
Called Out Time:	6/01/2016	0400	MTN
Arrived On Location At:		0730	
Job Started At:		0840	
Job Completed At:		0943	
Departed Location At:		1030	

HALLIBURTON

Cementing Job Summary

The Road to Excellence Starts with Safety

Sold To #: 369404	Ship To #: 3615691	Quote #:	Sales Order #: 0903339228							
Customer: EXTRACTION OIL & GAS -		Customer Rep: JOSE								
Well Name: BRENIMAN	Well #: 6	API/UWI #: 05-123-40420-00								
Field: WATTENBERG	City (SAP): WINDSOR	County/Parish: WELD	State: COLORADO							
Legal Description: NE NW-16-6N-67W-582FNL-2070FWL										
Contractor: PATTERSON-UTI ENERGY		Rig/Platform Name/Num: PATTERSON 346								
Job BOM: 7521										
Well Type: HORIZONTAL OIL										
Sales Person: HALAMERICA/HB71271		Srv Supervisor: Christopher Pickell								
Job										
Formation Name										
Formation Depth (MD)	Top	Bottom								
Form Type	BHST									
Job depth MD	1533ft	Job Depth TVD	1533ft							
Water Depth		Wk Ht Above Floor	4ft							
Perforation Depth (MD)	From	To								
Well Data										
Description	New / Used	Size in	ID in	Weight lbm/ft	Thread	Grade	Top MD ft	Bottom MD ft	Top TVD ft	Bottom TVD ft
Casing		9.625	8.921	36			0	1533	0	1533
Open Hole Section			13.5				0	1533	0	1533
Tools and Accessories										
Type	Size in	Qty	Make	Depth ft	Type	Size in	Qty	Make		
Guide Shoe	9.625				Top Plug	9.625	1	HES		
Float Shoe	9.625		1	1533	Bottom Plug	9.625		HES		
Float Collar	9.625		1	1488	SSR plug set	9.625		HES		
Insert Float	9.625				Plug Container	9.625	1	HES		
Stage Tool	9.625				Centralizers	9.625		HES		
Fluid Data										
Stage/Plug #: 1										
Fluid #	Stage Type	Fluid Name	Qty	Qty UoM	Mixing Density lbm/gal	Yield ft ³ /sack	Mix Fluid Gal	Rate bbl/min	Total Mix Fluid Gal	
1	Fresh Water	Fresh Water W/Red Dye	20	bbl	8.33			6		
Fluid #	Stage Type	Fluid Name	Qty	Qty UoM	Mixing Density lbm/gal	Yield ft ³ /sack	Mix Fluid Gal	Rate bbl/min	Total Mix Fluid Gal	
2	SwiftCem	SWIFTCM (TM) SYSTEM	550	sack	13.5	1.74	9.17	8		

HALLIBURTON

Cementing Job Summary

Fluid #	Stage Type	Fluid Name	Qty	Qty UoM	Mixing Density lbm/gal	Yield ft ³ /sack	Mix Fluid Gal	Rate bbl/min	Total Mix Fluid Gal
3	Fresh Water Displacement	Fresh Water Displacement	115	bbl	8.33			8-3	
Cement Left In Pipe		Amount	42 ft		Reason			Shoe Joint	
Comment Returned all 20 bbl of spacer and 26 bbl of cement to surface									

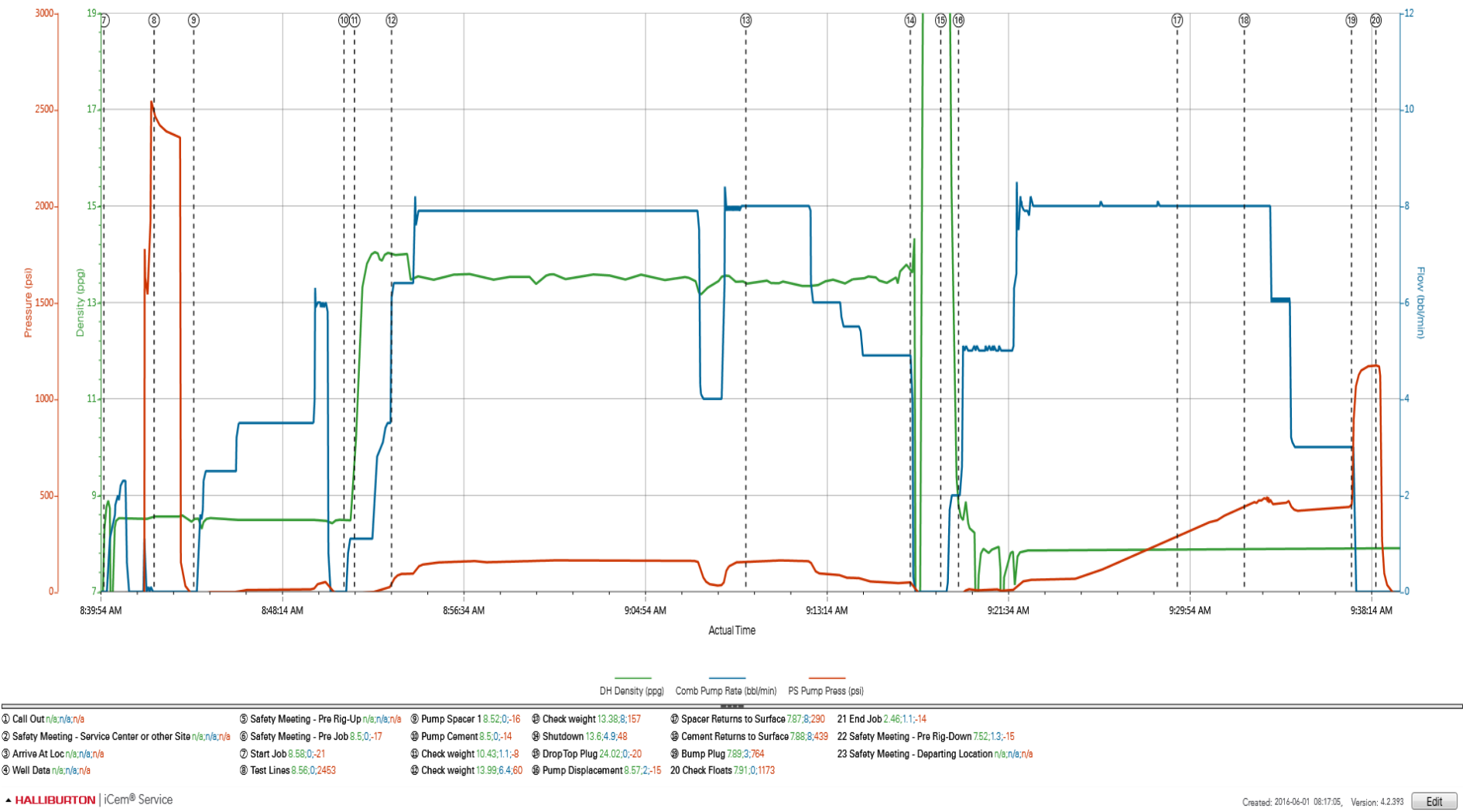
2.0 Real-Time Job Summary

2.1 Job Event Log

Type	Seq. No.	Activity	Graph Label	Date	Time	Source	Downhole Density (ppg)	Combined Pump Rate (bbl/min)	Pass-Side Pump Pressure (psi)	Comments
Event	1	Call Out	Call Out	6/1/2016	04:00:00	USER				Crew called out at 04:00 to be on location at 08:00. Crew was Chris Pickell, Nick Roles, Alvaro Perez, Tim Wood
Event	2	Safety Meeting - Service Center or other Site	Safety Meeting - Service Center or other Site	6/1/2016	06:30:00	USER				Safety meeting held for journey, equipment double checked. Left the yard for location.
Event	3	Arrive At Loc	Arrive At Loc	6/1/2016	07:30:00	USER				Arrive on location 30 minutes early. Rig had 10 joints of casing left to run.
Event	4	Other	Well Data	6/1/2016	07:35:00	USER				TD 1533' 13 1/2" OH. TP 1533' 9 5/8" 36#. FC 1488'. WF 8.8 PPG WBM
Event	5	Safety Meeting - Pre Rig-Up	Safety Meeting - Pre Rig-Up	6/1/2016	07:45:00	USER				Safety meeting held for rig up. Hazard hunt performed. Rig up planned and executed.
Event	6	Safety Meeting - Pre Job	Safety Meeting - Pre Job	6/1/2016	08:35:16	USER				Safety meeting held with rig crew to discuss job safety and procedure.
Event	7	Start Job	Start Job	6/1/2016	08:40:07	COM6				
Event	8	Test Lines	Test Lines	6/1/2016	08:42:26	COM6	8.56	0.00	2453.00	Pressure test lines to 2500 psi. Checked for visible leaks and pressure loss
Event	9	Pump Spacer 1	Pump Spacer 1	6/1/2016	08:44:15	COM6	8.52	0.00	-16.00	Pump 20 bbl of water with 2 pounds of red dye
Event	10	Pump Cement	Pump Cement	6/1/2016	08:51:09	COM6	8.50	0.00	-14.00	Pump 170.5 bbl 550 sks of Swiftcem cement 13.5 ppg 1.74 yield 9.17 yield
Event	11	Check Weight	Check weight	6/1/2016	08:51:38	COM6	10.43	1.10	-8.00	Cement scaled at 13.7 ppg
Event	12	Check Weight	Check weight	6/1/2016	08:53:20	COM6	13.99	6.40	60.00	Cement scaled at 13.3 ppg
Event	13	Check Weight	Check weight	6/1/2016	09:09:36	COM6	13.38	8.00	157.00	Cement scaled at 13.5 ppg
Event	14	Shutdown	Shutdown	6/1/2016	09:17:08	USER	13.60	4.90	48.00	

Event	15	Drop Top Plug	Drop Top Plug	6/1/2016	09:18:32	COM6	24.02	0.00	-20.00	HWE Top plug preloads. Drop witnessed by company man Jose
Event	16	Pump Displacement	Pump Displacement	6/1/2016	09:19:21	COM6	8.57	2.00	-15.00	Pump 115 bbl of Displacement using water
Event	17	Other	Spacer Returns to Surface	6/1/2016	09:29:24	COM6	7.87	8.00	290.00	Spacer returns to surface with 66 bbl away
Event	18	Other	Cement Returns to Surface	6/1/2016	09:32:29	COM6	7.88	8.00	439.00	Cement returns to surface with 89 bbl away
Event	19	Bump Plug	Bump Plug	6/1/2016	09:37:24	COM6	7.89	3.00	764.00	Blug landed with 764 to 1120 psi
Event	20	Other	Check Floats	6/1/2016	09:38:31	COM6	7.91	0.00	1173.00	Pressure held for 1 minute then released. Floats held. 1/2 bbl back to tanks
Event	21	End Job	End Job	6/1/2016	09:43:28	COM6				Returnd all 20 bbl of spacer and 26 bbl of cement to surface.
Event	22	Safety Meeting - Pre Rig-Down	Safety Meeting - Pre Rig-Down	6/1/2016	09:43:39	USER				Safety meeting held for rig down. Washed up pump to cellar. Rigged down all equipment
Event	23	Safety Meeting - Departing Location	Safety Meeting - Departing Location	6/1/2016	10:30:00	USER				Safety meeting held for journey. Left location for the yard.

EXTRACTION BRENIMAN #6 SURFACE



EXTRACTION BRENIMAN #6 SURFACE

