

HALLIBURTON

iCem[®] Service

EXTRACTION OIL & GAS

Date: Thursday, July 07, 2016

BRENIMAN #2 PRODUCTION

Job Date: Monday, June 20, 2016

Sincerely,

Julia Nichols

Legal Notice

Warning Disclaimer

Although the information contained in this report is based on sound engineering practices, the copyright owner(s) does (do) not accept any responsibility whatsoever, in negligence or otherwise, for any loss or damage arising from the possession or use of the report whether in terms of correctness or otherwise. The application, therefore, by the user of this report or any part thereof, is solely at the user's own risk.

Limitations of Liability

Except as expressly set forth herein, there are no representations or warranties by Halliburton, express or implied, including implied warranties of merchantability and/or fitness for a particular purpose. In no event will Halliburton or its suppliers be liable for consequential, incidental, special, punitive or exemplary damages (including, without limitation, loss of data, profits, use of hardware, or software). Customer accepts full responsibility for any investment made based on results from the Software. Any interpretations, analyses or modeling of any data, including, but not limited to Customer data, and any recommendation or decisions based upon such interpretations, analyses or modeling are opinions based upon inferences from measurements and empirical relationships and assumptions, which inferences and assumptions are not infallible, and with respect to which professional may differ. Accordingly, Halliburton cannot and does not warrant the accuracy, correctness or completeness of any such interpretation, recommendation, modeling or other products of the Software Product. As such, any interpretation, recommendation or modeling resulting from the Software for the purpose of any drilling, well treatment, production or financial decision will be at the sole risk of Customer. Under no circumstances will Halliburton or its suppliers be liable for any damages.

Table of Contents

1.0 Cementing Job Summary 4

 1.1 Executive Summary4

2.0 Real-Time Job Summary 7

 2.1 Job Event Log7

3.0 Attachments..... 9

 3.1 Custom Results – Job Chart with Events9

 3.2 Custom Results – Job Chart without Events.....10

1.0 Cementing Job Summary

1.1 Executive Summary

Halliburton appreciates the opportunity to perform the cementing services on the **Breniman #2** cement **Production** casing job. A pre-job safety meeting was held before the job where details of the job were discussed, potential safety hazards were reviewed, and environmental compliance procedures were outlined.

Approximately 65 barrels of cement were returned to surface.

Halliburton maintains a continuous quality improvement process and appreciates any comments or suggestions that you may have. Halliburton again thanks you for the opportunity to perform service work on this well. We hope to be your solutions provider for future projects.

Respectfully,

Halliburton [Ft. Lupton]

HALLIBURTON

Cementing Job Summary

The Road to Excellence Starts with Safety

Sold To #: 369404		Ship To #: 3615695		Quote #:		Sales Order #: 0903368443				
Customer: EXTRACTION OIL & GAS				Customer Rep: LARRY						
Well Name: BRENIMAN		Well #: 2		API/UWI #: 05-123-40424-00						
Field: WATTENBERG		City (SAP): WINDSOR		County/Parish: WELD		State: COLORADO				
Legal Description: NE NW-16-6N-67W-483FNL-2127FWL										
Contractor: PATTERSON-UTI ENERGY				Rig/Platform Name/Num: PATTERSON 346						
Job BOM: 7523										
Well Type: HORIZONTAL OIL										
Sales Person: HALAMERICA\HX38199				Srvc Supervisor: Joseph Fantasia						
Job										
Formation Name										
Job depth MD		17443ft		Job Depth TVD						
Well Data										
Description	New / Used	Size in	ID in	Weight lbm/ft	Thread	Grade	Top MD ft	Bottom MD ft	Top TVD ft	Bottom TVD ft
Casing		9.625	8.921	36			0	1586		
Casing		5.5	4.778	20			0	17443		
Open Hole Section			7.875				1586	17443		
Fluid Data										
Stage/Plug #: 1										
Fluid #	Stage Type	Fluid Name	Qty	Qty UoM	Mixing Density lbm/gal	Yield ft ³ /sack	Mix Fluid Gal	Rate bbl/min	Total Mix Fluid Gal	
1	11.5 lb/gal Tuned Spacer III	Tuned Spacer III	50	bbl	11.5	3.74	23.7	5	42	
35.40 gal/bbl		FRESH WATER								
149.34 lbm/bbl		BARITE, 100 LB SK (100003680)								
0.30 gal/bbl		DUAL SPACER SURFACTANT B, 5 GAL PAIL (100003665)								
0.30 gal/bbl		MUSOL A, 330 GAL TOTE - (790828)								
Fluid #	Stage Type	Fluid Name	Qty	Qty UoM	Mixing Density lbm/gal	Yield ft ³ /sack	Mix Fluid Gal	Rate bbl/min	Total Mix Fluid Gal	
2	ElastiCem	ELASTICEM (TM) SYSTEM	150	sack	13.2	1.57		8	7.48	
7.48 Gal		FRESH WATER								
0.80 %		HR-5, 50 LB SK (100005050)								
Fluid #	Stage Type	Fluid Name	Qty	Qty UoM	Mixing Density lbm/gal	Yield ft ³ /sack	Mix Fluid Gal	Rate bbl/min	Total Mix Fluid Gal	

last updated on 6/20/2016 8:40:53 AM

Page 1 of 3

iCem® Service

(v. 4.2.393)

Created: Thursday, July 07, 2016

HALLIBURTON

Cementing Job Summary

3	ElastiCem W/ Super CBL	ELASTICEM (TM) SYSTEM	2100	sack	13.2	1.57		8	7.49
7.49 Gal		FRESH WATER							
0.80 %		HR-5, 50 LB SK (100005050)							
Fluid #	Stage Type	Fluid Name	Qty	Qty UoM	Mixing Density lbm/gal	Yield ft3/sack	Mix Fluid Gal	Rate bbl/mi n	Total Mix Fluid Gal
4	Displacement	Displacement	386	bbl	8.33			10	
Cement Left In Pipe		Amount	5 ft		Reason			Shoe Joint	
Comment APPROX 65 BBLS CEMENT TO SURFACE.									

2.0 Real-Time Job Summary

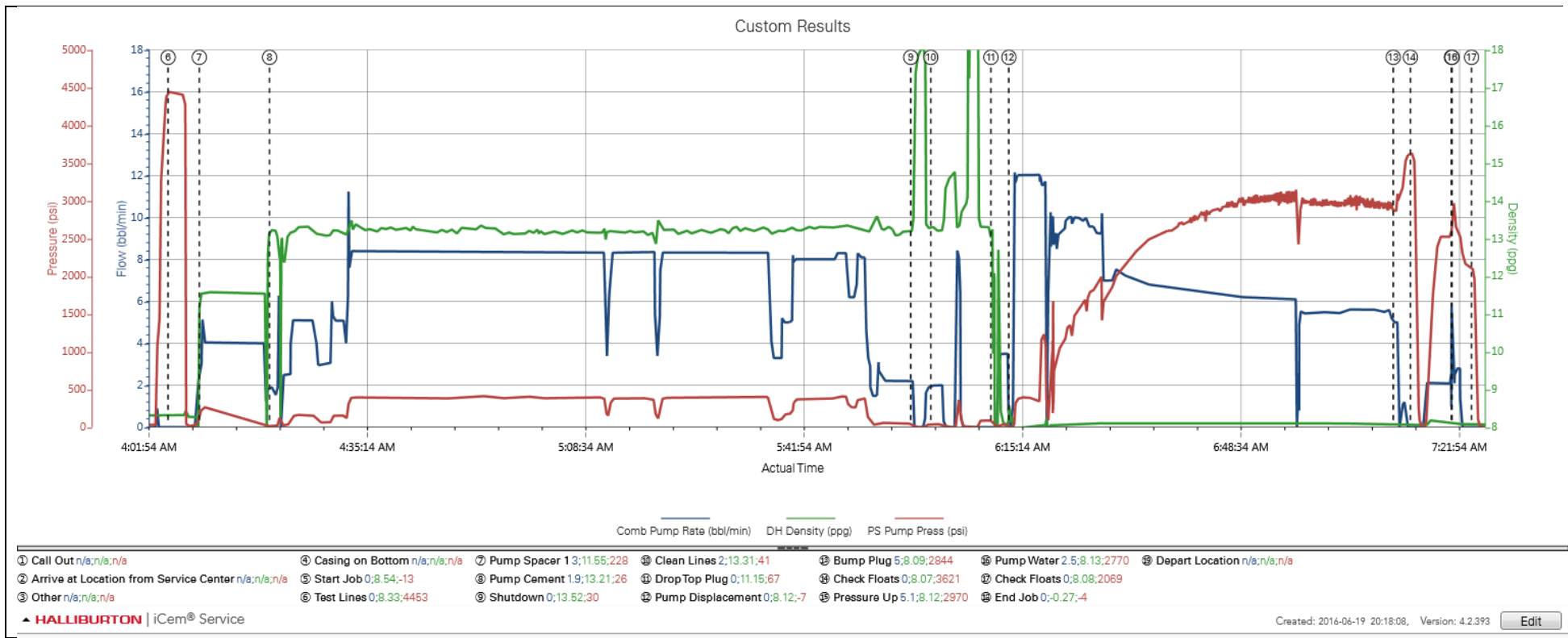
2.1 Job Event Log

Type	Seq. No.	Activity	Graph Label	Date	Time	Source	Combined Pump Rate (bbl/min)	Downhole Density (ppg)	Pass-Side Pump Pressure (psi)	Comments
Event	1	Call Out	Call Out	6/19/2016	13:00:00	USER				CALL OUT AT 1300 REQUESTED ON LOCATION AT 2000.
Event	2	Arrive at Location from Service Center	Arrive at Location from Service Center	6/19/2016	19:00:00	USER				ARRIVE ON LOCATION AT 1900. HELD SITE ASSESSMENT AND PRE RIG UP SAFETY MEETING WITH CREW PRIOR TO RIGGING UP EQUIPMENT.
Event	3	Water Test Results	Water Test Results	6/19/2016	19:30:00	USER				WATER TEST -- TEMP 75 -- CHLORIDES 0 -- PH 7
Event	4	Casing on Bottom	Casing on Bottom	6/20/2016	03:00:00	USER				CASING ON BOTTOM AT 0300.
Event	5	Start Job	Start Job	6/20/2016	03:57:40	COM6				HELD PRE JOB SAFETY MEETING WITH ALL PRESENT PERSONNEL PRIOR TO STARTING JOB.
Event	6	Test Lines	Test Lines	6/20/2016	04:05:10	COM6	0.00	8.33	4453.00	PRESSURE TEST LINES TO 4500 PSI.
Event	7	Pump Spacer 1	Pump Spacer 1	6/20/2016	04:09:56	COM6	3.00	11.55	228.00	PUMP 50 BBLS TUNED SPACER MIXED AT 11.5 PPG. 15 GALLONS OF MUSOL A AND 15 GALLONS OF DUAL SURFACTANT B ADDED TO SPACER. 5 GALLONS D AIR ADDED TO CONTROL AIR ENTRAINMENT. DENSITY WAS VERIFIED BY PRESSURIZED MUD SCALES TO BE 11.5PPG.
Event	8	Pump Cement	Pump Cement	6/20/2016	04:20:39	COM6	1.90	13.21	26.00	PUMP 629 BBLS (2250 SKS) ELASTICEM MIXED AT 13.2 PPG. DENSITY VERIFIED BY SCALE. THE FIRST 42 BARRELS CONTAINED NO CBL.
Event	9	Shutdown	Shutdown	6/20/2016	05:58:31	COM6				
Event	10	Clean Lines	Clean Lines	6/20/2016	06:01:34	COM6				BLOW DOWN LINES FROM RIG FLOOR. WASH PUMPS TO PIT.
Event	11	Drop Top Plug	Drop Top Plug	6/20/2016	06:10:45	COM6				3RD PARTY TOP PLUG DROPPED DURING SHUTDOWN.
Event	12	Pump Displacement	Pump Displacement	6/20/2016	06:13:29	COM6	0.00	8.32	7.00	DISPLACE USING 386 BBLS FRESH WATER. GOOD RETURNS THROUGHOUT. RUBBER AND POLYFLAKE TO SURFACE AT 200 BBLS AWAY. SPACER TO SURFACE AT 271 BBLS AWAY AND CEMENT TO SURFACE AT 321 BBLS AWAY. APPROX 65 BBLS CEMENT TO SURFACE.

Event	13	Bump Plug	Bump Plug	6/20/2016	07:12:10	USER	5.00	8.09	2844.00	PLUG LANDED AT 2881 PSI. PRESSURE BROUGHT TO 3600 PSI AND HELD 2 MIN.
Event	14	Check Floats	Check Floats	6/20/2016	07:14:46	USER	0.00	8.07	3621.00	FLOATS HELD. 4.5 BBLS BACK TO TRUCK
Event	15	Pressure Up	Pressure Up	6/20/2016	07:21:02	USER	5.10	8.12	2970.00	PRESSURE UP TO 3000 PSI TO RUPTURE PLUG.
Event	16	Pump Water	Pump Water	6/20/2016	07:21:08	USER	2.50	8.33	2770.00	PUMP 5 BBLS FRESH WATER FOR WET SHOE.
Event	17	Check Floats	Check Floats	6/20/2016	07:24:06	USER	0.00	8.08	2069.00	FLOATS HELD. 3.5 BBLS BACK TO TRUCK.
Event	18	End Job	End Job	6/20/2016	08:02:40	COM6				HELD PRE RIG DOWN SAFETY MEETING WITH CREW PRIOR TO RIGGING DOWN EQUIPMENT.
Event	19	Depart Location	Depart Location	6/20/2016	08:30:00	USER				DEPART LOCATION

3.0 Attachments

3.1 Custom Results – Job Chart with Events



3.2 Custom Results – Job Chart without Events

