



PHOTO: VIEW FROM CORNER #1 TO LOCATION STAKES

CAMERA ANGLE: NORTHERLY



PHOTO: VIEW FROM BEGINNING OF PROPOSED ACCESS

CAMERA ANGLE: NORTHERLY

WARD PETROLEUM CORPORATION

BRIGHTON LAKES PAD
SW 1/4 SW 1/4, SECTION 20, T1S, R66W, 6th P.M.
ADAMS COUNTY, COLORADO



UELS, LLC
Corporate Office * 85 South 200 East
Vernal, UT 84078 * (435) 789-1017

TAKEN BY	D.N., N.P.	12-12-16	
DRAWN BY	K.B.	12-20-16	
LOCATION PHOTOS			PHOTO 1



PHOTO: VIEW OF LOCATION STAKES

CAMERA ANGLE: NORTHERLY

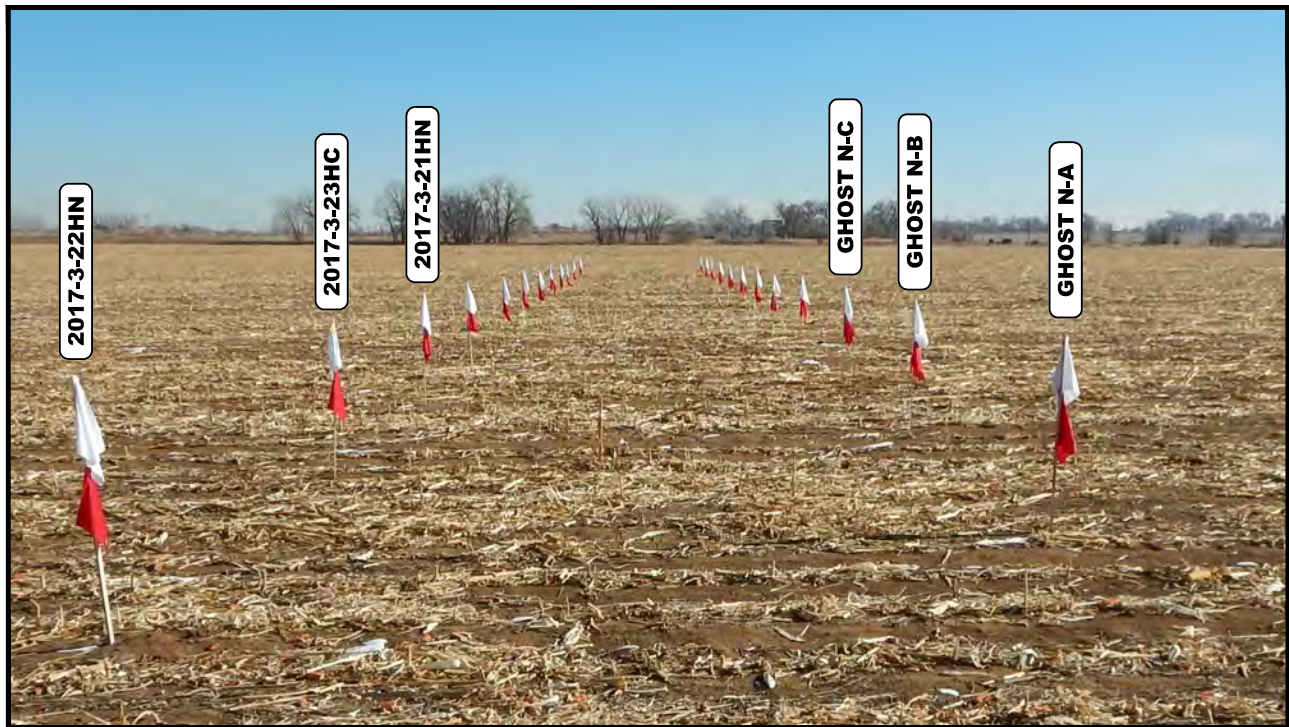


PHOTO: VIEW OF LOCATION STAKES

CAMERA ANGLE: EASTERLY

WARD PETROLEUM CORPORATION

BRIGHTON LAKES PAD
SW 1/4 SW 1/4, SECTION 20, T1S, R66W, 6th P.M.
ADAMS COUNTY, COLORADO



UELS, LLC
Corporate Office * 85 South 200 East
Vernal, UT 84078 * (435) 789-1017

TAKEN BY	D.N., N.P.	12-12-16	
DRAWN BY	K.B.	12-20-16	
LOCATION PHOTOS			PHOTO 2



PHOTO: VIEW OF LOCATION STAKES

CAMERA ANGLE: SOUTHERLY

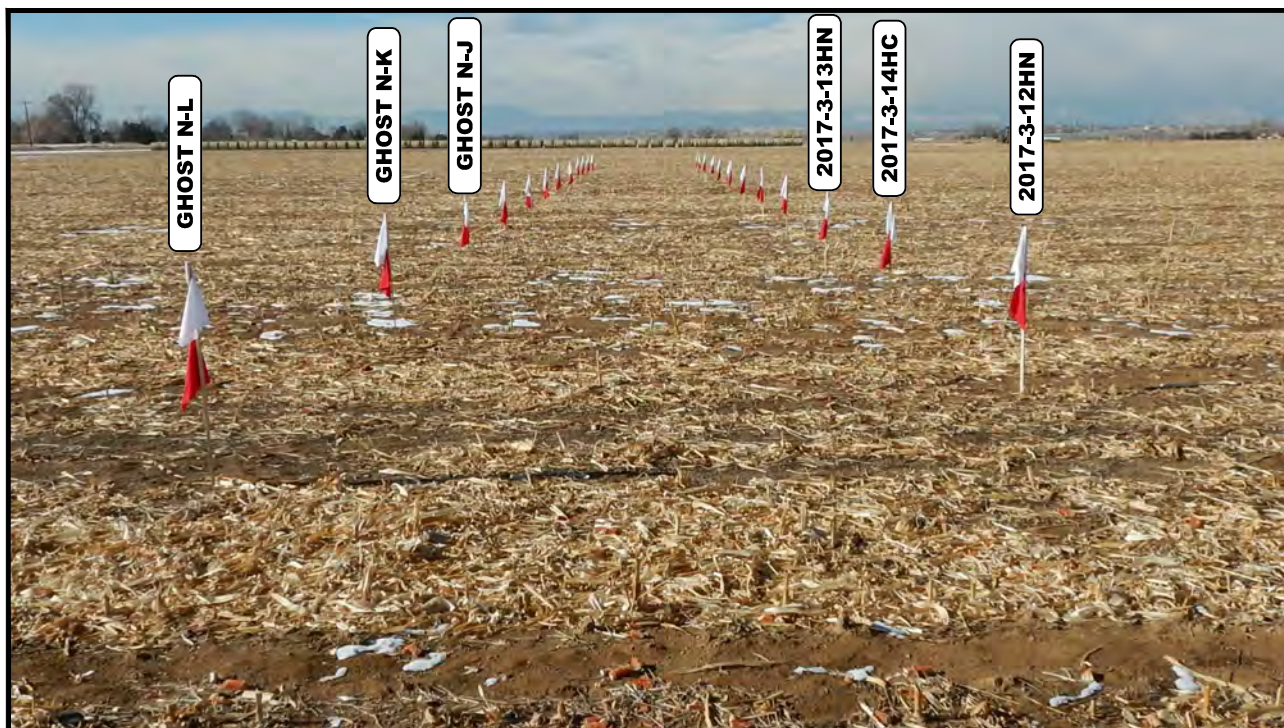


PHOTO: VIEW OF LOCATION STAKES

CAMERA ANGLE: WESTERLY

WARD PETROLEUM CORPORATION

BRIGHTON LAKES PAD
SW 1/4 SW 1/4, SECTION 20, T1S, R66W, 6th P.M.
ADAMS COUNTY, COLORADO



UELS, LLC
Corporate Office * 85 South 200 East
Vernal, UT 84078 * (435) 789-1017

TAKEN BY	D.N., N.P.	12-12-16	
DRAWN BY	K.B.	12-20-16	
LOCATION PHOTOS			PHOTO 3