

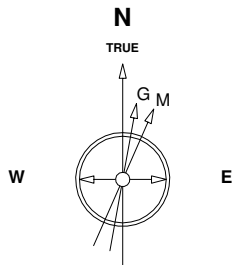
# Great Western Operating Company, LLC

**Location** Colorado  
**Field** Wattenburg  
**Installation** Ocho

**Slot** Slot W10 - Ocho LD 17-374HN  
**Well** Ocho LD 17-374HN  
**Wellbore** Ocho LD 17-374HN (PWB)

Created by admin  
Date plotted 2-Sep-2016

Plot reference is Ocho LD 17-374HN (PWB).  
Ref wellpath is Ocho LD 17-374HN (PWP#1).  
Coordinates are in Feet reference Slot W10 - Ocho LD 17-374HN.  
True Vertical Depths are reference Rig Datum.  
Measured Depths are reference Rig Datum.  
Rig Datum: Planned Datum #1  
Rig Datum to Mean Sea Level: 20.00 ft.  
Plot North is aligned to TRUE North.

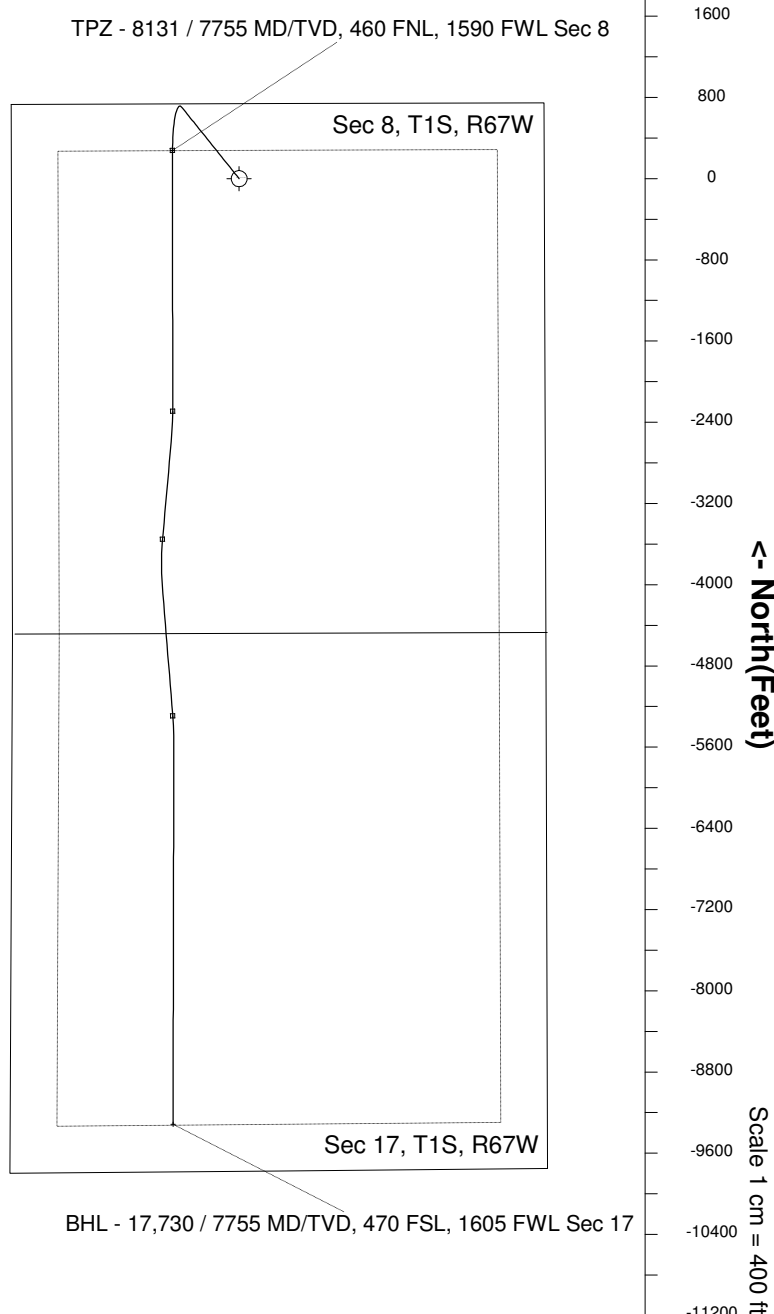
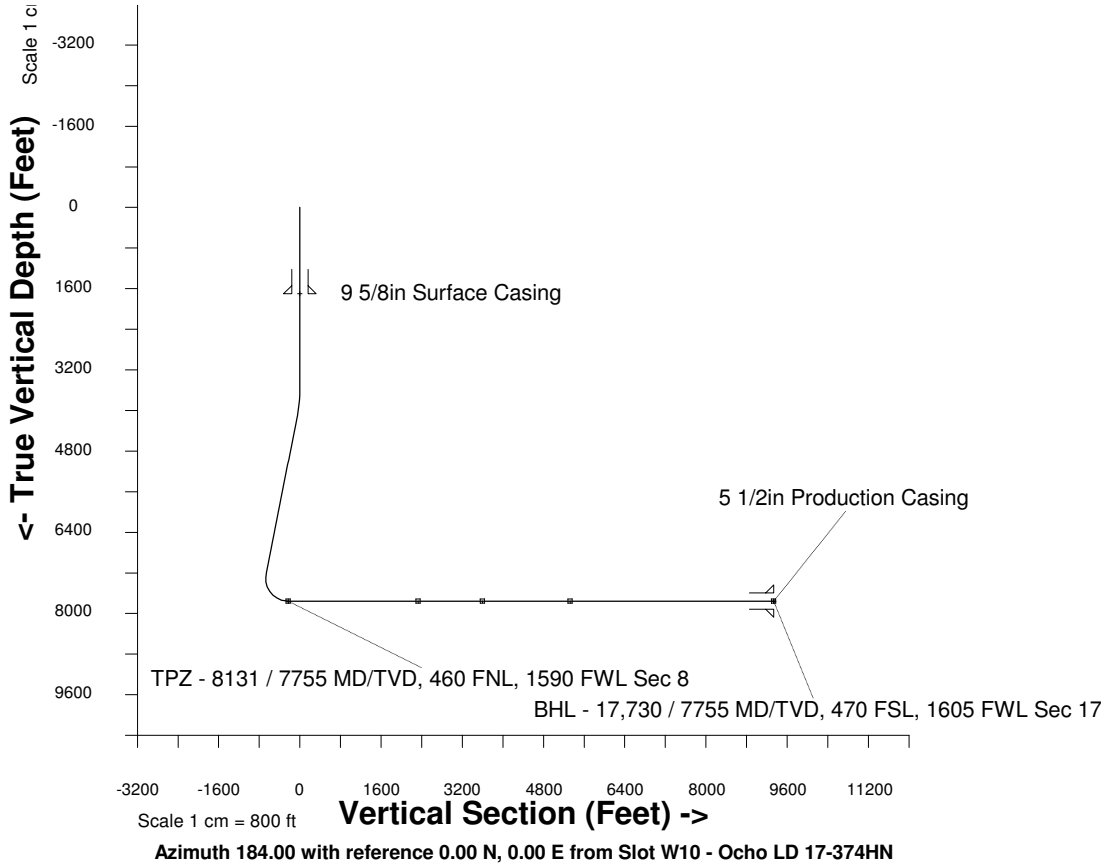


Scale 1 cm = 400 ft

East (Feet) ->

-6400 -5600 -4800 -4000 -3200 -2400 -1600 -800 0 800 1600 2400 3200 4000

31-Aug-2016  
IGRF Model [1900.0-2020.0] Dip: 66.52 deg Field: 52289.7 nT  
Lat: N39 59 4.9488 Long: W104 54 50.5188 Elev: 0.00 ft  
Magnetic North is 8.34 deg East of TRUE North  
To correct azimuth from Magnetic to TRUE add 8.34 deg



## WELL PROFILE DATA

Point	MD	Inc	Azi	TVD	North	East	deg/100ft	V. Sect
Tie on	0.00	0.00	0.00	0.00	S 0.00	W 0.00		-0.00
KOP	3600.00	0.00	321.20	3600.00	S 0.00	W 0.00	0.00	-0.00
End of Build	4100.74	15.02	321.20	4095.02	N 50.87	W 40.89	9.84	-47.89
End of Hold	7349.25	15.02	321.20	7232.52	N 707.10	W 568.44	0.00	-665.75
Target TPZ - ... Sec 8	8131.25	90.00	179.97	7755.00	N 275.41	W 656.01	42.65	-229.01
Target KOP	10700.00	90.00	179.97	7755.00	S 2293.35	W 654.65	0.00	2333.41
End of Turn	10952.38	90.00	185.02	7755.00	S 2545.40	W 665.63	6.56	2585.61
Target Edstrom 24-8 1	11962.66	90.00	185.02	7755.00	S 3551.81	W 753.98	0.00	3595.73
End of Turn	12446.21	90.00	175.35	7755.00	S 4034.79	W 755.51	6.56	4077.64
Target Neg KOP	13708.93	90.00	175.35	7755.00	S 5293.34	W 653.06	0.00	5325.99
End of Turn	13947.15	90.00	180.11	7755.00	S 5531.31	W 643.62	6.56	5562.73
T.D. & Target BHL... 17	17730.25	90.00	180.11	7755.00	S 9314.41	W 650.93	0.00	9337.12