

Project: Weld County, CO
Site: SEC 36, T8N-R67W
Well: Suds 8-67-36-25C
Wellbore: Hz
Design: Plan 2

Reference Details

Geodetic System: US State Plane 1983
Datum: North American Datum 1983
Ellipsoid: GRS 1980
Latitude: 40° 36' 39.773 N
Longitude: 104° 50' 38.191 W
Grid Convergence: 0.42° West
Ground Elevation: 5179.0
KB Elevation: Well @ 5205.0usft

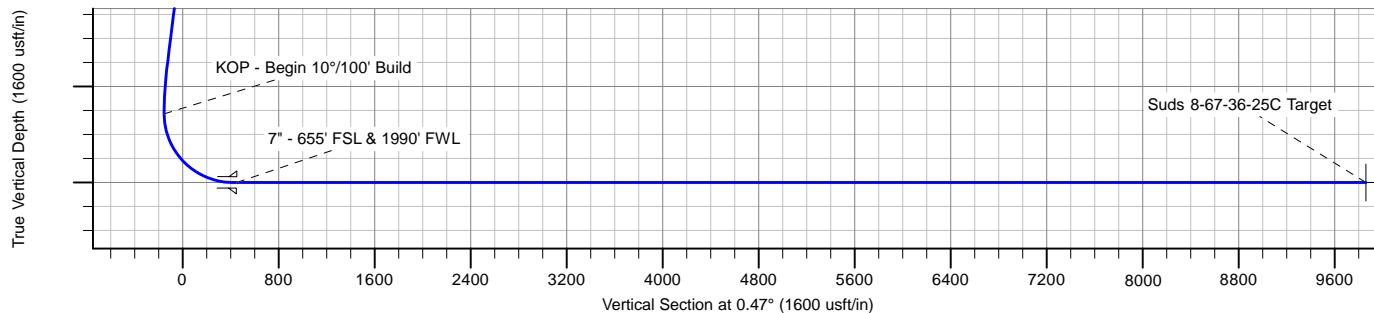
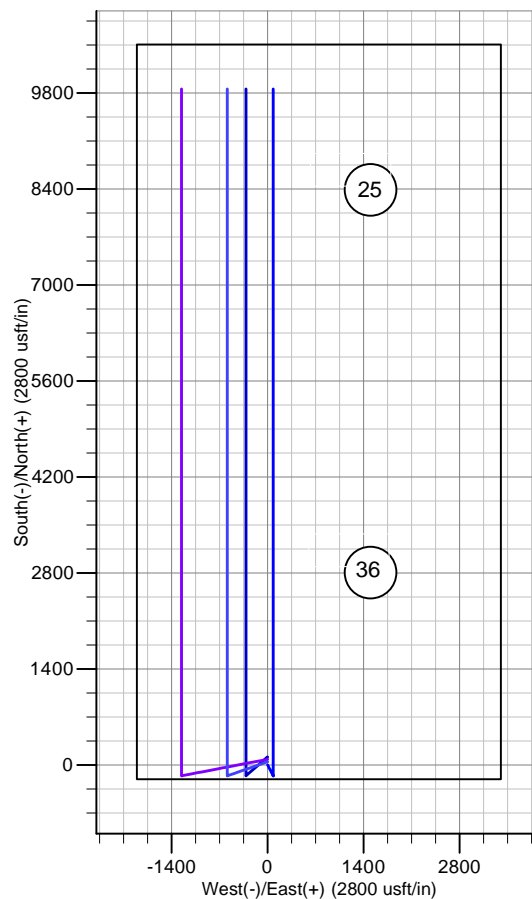
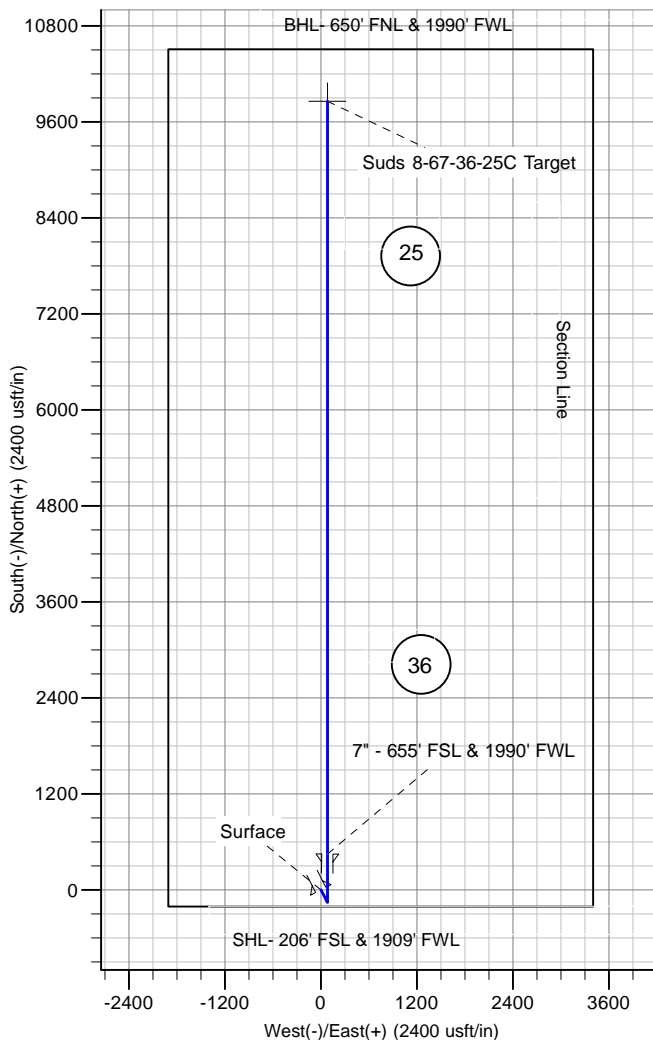
RPM Consulting, Inc.
1600 Broadway, Suite 1510
Denver, CO 80013
303-595-7625

SECTION DETAILS

CASING DETAILS

MD	Inc	Azi	TVD	+N/-S	+E/-W	Dleg	TFace	Vsect
0.0	0.00	0.00	0.0	0.0	0.0	0.00	0.00	0.0
1500.0	0.00	0.00	1500.0	0.0	0.0	0.00	0.00	0.0
4977.3	0.00	0.00	4977.3	0.0	0.0	0.00	0.00	0.0
5377.3	8.00	152.71	5376.0	-24.8	12.8	2.00	152.71	-24.7
6238.0	8.00	152.71	6228.3	-131.2	67.7	0.00	0.00	-130.7
6638.0	0.00	0.00	6627.0	-156.0	80.5	2.00	180.00	-155.3
7538.0	90.00	0.00	7200.0	417.0	80.5	10.00	0.00	417.6
7553.6	90.00	0.00	7200.0	432.6	80.5	0.02	94.82	433.3
16980.0	90.00	0.00	7200.0	9859.0	81.0	0.00	0.00	9859.3

TVD	MD	Name
1500.0	1500.0	Surface
7200.0	7570.0	Intermediate



Enerplus Resources (USA) Corporation

**Weld County, CO
SEC 36, T8N-R67W
Suds 8-67-36-25C**

Hz

Plan: Plan 2

Standard Planning Report

06 January, 2017

Planning Report

Database:	EDM	Local Co-ordinate Reference:	Well Suds 8-67-36-25C
Company:	Enerplus Resources (USA) Corporation	TVD Reference:	Well @ 5205.0usft
Project:	Weld County, CO	MD Reference:	Well @ 5205.0usft
Site:	SEC 36, T8N-R67W	North Reference:	True
Well:	Suds 8-67-36-25C	Survey Calculation Method:	Minimum Curvature
Wellbore:	Hz		
Design:	Plan 2		

Project	Weld County, CO		
Map System:	US State Plane 1983	System Datum:	Mean Sea Level
Geo Datum:	North American Datum 1983		
Map Zone:	Colorado Northern Zone		

Site		SEC 36, T8N-R67W			
Site Position:		Northing:	1,466,120.29 usft	Latitude:	40° 36' 39.773 N
From:	Lat/Long	Easting:	3,182,148.45 usft	Longitude:	104° 50' 38.191 W
Position Uncertainty:	0.0 usft	Slot Radius:	13-3/16 "	Grid Convergence:	0.42 °

Well	Suds 8-67-36-25C					
Well Position	+N/-S	0.0 usft	Northing:	1,466,120.28 usft	Latitude:	40° 36' 39.773 N
	+E/-W	0.0 usft	Easting:	3,182,148.45 usft	Longitude:	104° 50' 38.191 W
Position Uncertainty		0.0 usft	Wellhead Elevation:	0.0 usft	Ground Level:	5,179.0 usft

Wellbore	Hz				
Magnetics	Model Name	Sample Date	Declination (°)	Dip Angle (°)	Field Strength (nT)
	IGRF2010	1/5/2017	8.17	67.01	52,645

Design	Plan 2			
Audit Notes:				
Version:	Phase:	PROTOTYPE	Tie On Depth:	0.0
Vertical Section:	Depth From (TVD) (usft)	+N/-S (usft)	+E/-W (usft)	Direction (°)
	0.0	0.0	0.0	0.47

Plan Sections										
Measured Depth (usft)	Inclination (°)	Azimuth (°)	Vertical Depth (usft)	+N/-S (usft)	+E/-W (usft)	Dogleg Rate (°/100usft)	Build Rate (°/100usft)	Turn Rate (°/100usft)	TFO (°)	Target
0.0	0.00	0.00	0.0	0.0	0.0	0.00	0.00	0.00	0.00	
1,500.0	0.00	0.00	1,500.0	0.0	0.0	0.00	0.00	0.00	0.00	
4,977.3	0.00	0.00	4,977.3	0.0	0.0	0.00	0.00	0.00	0.00	
5,377.3	8.00	152.71	5,376.0	-24.8	12.8	2.00	2.00	0.00	152.71	
6,238.0	8.00	152.71	6,228.3	-131.2	67.7	0.00	0.00	0.00	0.00	
6,638.0	0.00	0.00	6,627.0	-156.0	80.5	2.00	-2.00	0.00	180.00	
7,538.0	90.00	0.00	7,200.0	417.0	80.5	10.00	10.00	0.00	0.00	
7,553.6	90.00	0.00	7,200.0	432.6	80.5	0.02	0.00	0.02	94.82	
16,980.0	90.00	0.00	7,200.0	9,859.0	81.0	0.00	0.00	0.00	0.00	Suds 8-67-36-25C Tai

Planning Report

Database:	EDM	Local Co-ordinate Reference:	Well Suds 8-67-36-25C
Company:	Enerplus Resources (USA) Corporation	TVD Reference:	Well @ 5205.0usft
Project:	Weld County, CO	MD Reference:	Well @ 5205.0usft
Site:	SEC 36, T8N-R67W	North Reference:	True
Well:	Suds 8-67-36-25C	Survey Calculation Method:	Minimum Curvature
Wellbore:	Hz		
Design:	Plan 2		

Planned Survey									
Measured Depth (usft)	Inclination (°)	Azimuth (°)	Vertical Depth (usft)	+N/-S (usft)	+E/-W (usft)	Vertical Section (usft)	Dogleg Rate (°/100usft)	Build Rate (°/100usft)	Turn Rate (°/100usft)
0.0	0.00	0.00	0.0	0.0	0.0	0.0	0.00	0.00	0.00
100.0	0.00	0.00	100.0	0.0	0.0	0.0	0.00	0.00	0.00
200.0	0.00	0.00	200.0	0.0	0.0	0.0	0.00	0.00	0.00
300.0	0.00	0.00	300.0	0.0	0.0	0.0	0.00	0.00	0.00
400.0	0.00	0.00	400.0	0.0	0.0	0.0	0.00	0.00	0.00
500.0	0.00	0.00	500.0	0.0	0.0	0.0	0.00	0.00	0.00
600.0	0.00	0.00	600.0	0.0	0.0	0.0	0.00	0.00	0.00
700.0	0.00	0.00	700.0	0.0	0.0	0.0	0.00	0.00	0.00
800.0	0.00	0.00	800.0	0.0	0.0	0.0	0.00	0.00	0.00
900.0	0.00	0.00	900.0	0.0	0.0	0.0	0.00	0.00	0.00
1,000.0	0.00	0.00	1,000.0	0.0	0.0	0.0	0.00	0.00	0.00
1,100.0	0.00	0.00	1,100.0	0.0	0.0	0.0	0.00	0.00	0.00
1,200.0	0.00	0.00	1,200.0	0.0	0.0	0.0	0.00	0.00	0.00
1,300.0	0.00	0.00	1,300.0	0.0	0.0	0.0	0.00	0.00	0.00
1,400.0	0.00	0.00	1,400.0	0.0	0.0	0.0	0.00	0.00	0.00
1,500.0	0.00	0.00	1,500.0	0.0	0.0	0.0	0.00	0.00	0.00
9-5/8" - Surface									
1,600.0	0.00	0.00	1,600.0	0.0	0.0	0.0	0.00	0.00	0.00
1,700.0	0.00	0.00	1,700.0	0.0	0.0	0.0	0.00	0.00	0.00
1,800.0	0.00	0.00	1,800.0	0.0	0.0	0.0	0.00	0.00	0.00
1,900.0	0.00	0.00	1,900.0	0.0	0.0	0.0	0.00	0.00	0.00
2,000.0	0.00	0.00	2,000.0	0.0	0.0	0.0	0.00	0.00	0.00
2,100.0	0.00	0.00	2,100.0	0.0	0.0	0.0	0.00	0.00	0.00
2,200.0	0.00	0.00	2,200.0	0.0	0.0	0.0	0.00	0.00	0.00
2,300.0	0.00	0.00	2,300.0	0.0	0.0	0.0	0.00	0.00	0.00
2,400.0	0.00	0.00	2,400.0	0.0	0.0	0.0	0.00	0.00	0.00
2,500.0	0.00	0.00	2,500.0	0.0	0.0	0.0	0.00	0.00	0.00
2,600.0	0.00	0.00	2,600.0	0.0	0.0	0.0	0.00	0.00	0.00
2,700.0	0.00	0.00	2,700.0	0.0	0.0	0.0	0.00	0.00	0.00
2,800.0	0.00	0.00	2,800.0	0.0	0.0	0.0	0.00	0.00	0.00
2,900.0	0.00	0.00	2,900.0	0.0	0.0	0.0	0.00	0.00	0.00
3,000.0	0.00	0.00	3,000.0	0.0	0.0	0.0	0.00	0.00	0.00
3,100.0	0.00	0.00	3,100.0	0.0	0.0	0.0	0.00	0.00	0.00
3,200.0	0.00	0.00	3,200.0	0.0	0.0	0.0	0.00	0.00	0.00
3,300.0	0.00	0.00	3,300.0	0.0	0.0	0.0	0.00	0.00	0.00
3,400.0	0.00	0.00	3,400.0	0.0	0.0	0.0	0.00	0.00	0.00
3,500.0	0.00	0.00	3,500.0	0.0	0.0	0.0	0.00	0.00	0.00
3,600.0	0.00	0.00	3,600.0	0.0	0.0	0.0	0.00	0.00	0.00
3,700.0	0.00	0.00	3,700.0	0.0	0.0	0.0	0.00	0.00	0.00
3,800.0	0.00	0.00	3,800.0	0.0	0.0	0.0	0.00	0.00	0.00
3,900.0	0.00	0.00	3,900.0	0.0	0.0	0.0	0.00	0.00	0.00
4,000.0	0.00	0.00	4,000.0	0.0	0.0	0.0	0.00	0.00	0.00
4,100.0	0.00	0.00	4,100.0	0.0	0.0	0.0	0.00	0.00	0.00
4,200.0	0.00	0.00	4,200.0	0.0	0.0	0.0	0.00	0.00	0.00
4,300.0	0.00	0.00	4,300.0	0.0	0.0	0.0	0.00	0.00	0.00
4,400.0	0.00	0.00	4,400.0	0.0	0.0	0.0	0.00	0.00	0.00
4,500.0	0.00	0.00	4,500.0	0.0	0.0	0.0	0.00	0.00	0.00
4,600.0	0.00	0.00	4,600.0	0.0	0.0	0.0	0.00	0.00	0.00
4,700.0	0.00	0.00	4,700.0	0.0	0.0	0.0	0.00	0.00	0.00
4,800.0	0.00	0.00	4,800.0	0.0	0.0	0.0	0.00	0.00	0.00
4,900.0	0.00	0.00	4,900.0	0.0	0.0	0.0	0.00	0.00	0.00
4,977.3	0.00	0.00	4,977.3	0.0	0.0	0.0	0.00	0.00	0.00
Start 2°/100' Nudge									
5,000.0	0.45	152.71	5,000.0	-0.1	0.0	-0.1	2.00	2.00	0.00

Planning Report

Database:	EDM	Local Co-ordinate Reference:	Well Suds 8-67-36-25C
Company:	Enerplus Resources (USA) Corporation	TVD Reference:	Well @ 5205.0usft
Project:	Weld County, CO	MD Reference:	Well @ 5205.0usft
Site:	SEC 36, T8N-R67W	North Reference:	True
Well:	Suds 8-67-36-25C	Survey Calculation Method:	Minimum Curvature
Wellbore:	Hz		
Design:	Plan 2		

Planned Survey										
Measured Depth (usft)	Inclination (°)	Azimuth (°)	Vertical Depth (usft)	+N/-S (usft)	+E/-W (usft)	Vertical Section (usft)	Dogleg Rate (°/100usft)	Build Rate (°/100usft)	Turn Rate (°/100usft)	
5,100.0	2.45	152.71	5,100.0	-2.3	1.2	-2.3	2.00	2.00	0.00	
5,200.0	4.45	152.71	5,199.8	-7.7	4.0	-7.7	2.00	2.00	0.00	
5,300.0	6.45	152.71	5,299.3	-16.1	8.3	-16.1	2.00	2.00	0.00	
5,377.3	8.00	152.71	5,376.0	-24.8	12.8	-24.7	2.00	2.00	0.00	
5,400.0	8.00	152.71	5,398.5	-27.6	14.2	-27.5	0.00	0.00	0.00	
5,500.0	8.00	152.71	5,497.5	-40.0	20.6	-39.8	0.00	0.00	0.00	
5,600.0	8.00	152.71	5,596.5	-52.3	27.0	-52.1	0.00	0.00	0.00	
5,700.0	8.00	152.71	5,695.6	-64.7	33.4	-64.4	0.00	0.00	0.00	
5,800.0	8.00	152.71	5,794.6	-77.1	39.8	-76.7	0.00	0.00	0.00	
5,900.0	8.00	152.71	5,893.6	-89.4	46.1	-89.0	0.00	0.00	0.00	
6,000.0	8.00	152.71	5,992.6	-101.8	52.5	-101.4	0.00	0.00	0.00	
6,100.0	8.00	152.71	6,091.7	-114.2	58.9	-113.7	0.00	0.00	0.00	
6,200.0	8.00	152.71	6,190.7	-126.5	65.3	-126.0	0.00	0.00	0.00	
6,238.0	8.00	152.71	6,228.3	-131.2	67.7	-130.7	0.00	0.00	0.00	
6,300.0	6.76	152.71	6,289.8	-138.3	71.4	-137.7	2.00	-2.00	0.00	
6,400.0	4.76	152.71	6,389.3	-147.2	76.0	-146.6	2.00	-2.00	0.00	
6,500.0	2.76	152.71	6,489.1	-153.0	79.0	-152.4	2.00	-2.00	0.00	
6,600.0	0.76	152.71	6,589.0	-155.8	80.4	-155.1	2.00	-2.00	0.00	
6,638.0	0.00	0.00	6,627.0	-156.0	80.5	-155.3	2.00	-2.00	0.00	
KOP - Begin 10°/100' Build										
6,700.0	6.20	0.00	6,688.9	-152.6	80.5	-152.0	10.00	10.00	0.00	
6,800.0	16.20	0.00	6,786.9	-133.2	80.5	-132.6	10.00	10.00	0.00	
6,900.0	26.20	0.00	6,880.0	-97.1	80.5	-96.5	10.00	10.00	0.00	
7,000.0	36.20	0.00	6,965.4	-45.4	80.5	-44.7	10.00	10.00	0.00	
7,100.0	46.20	0.00	7,040.6	20.4	80.5	21.1	10.00	10.00	0.00	
7,200.0	56.20	0.00	7,103.1	98.2	80.5	98.9	10.00	10.00	0.00	
7,300.0	66.20	0.00	7,151.2	185.8	80.5	186.4	10.00	10.00	0.00	
7,400.0	76.20	0.00	7,183.4	280.3	80.5	281.0	10.00	10.00	0.00	
7,500.0	86.20	0.00	7,198.7	379.0	80.5	379.7	10.00	10.00	0.00	
7,538.0	90.00	0.00	7,200.0	417.0	80.5	417.6	10.00	10.00	0.00	
7,553.6	90.00	0.00	7,200.0	432.6	80.5	433.3	0.02	0.00	0.02	
7,570.0	90.00	0.00	7,200.0	449.0	80.5	449.6	0.00	0.00	0.00	
7" - 655' FSL & 1990' FWL - Intermediate										
7,600.0	90.00	0.00	7,200.0	479.0	80.5	479.6	0.00	0.00	0.00	
7,700.0	90.00	0.00	7,200.0	579.0	80.5	579.6	0.00	0.00	0.00	
7,800.0	90.00	0.00	7,200.0	679.0	80.5	679.6	0.00	0.00	0.00	
7,900.0	90.00	0.00	7,200.0	779.0	80.5	779.6	0.00	0.00	0.00	
8,000.0	90.00	0.00	7,200.0	879.0	80.5	879.6	0.00	0.00	0.00	
8,100.0	90.00	0.00	7,200.0	979.0	80.5	979.6	0.00	0.00	0.00	
8,200.0	90.00	0.00	7,200.0	1,079.0	80.5	1,079.6	0.00	0.00	0.00	
8,300.0	90.00	0.00	7,200.0	1,179.0	80.5	1,179.6	0.00	0.00	0.00	
8,400.0	90.00	0.00	7,200.0	1,279.0	80.5	1,279.6	0.00	0.00	0.00	
8,500.0	90.00	0.00	7,200.0	1,379.0	80.6	1,379.6	0.00	0.00	0.00	
8,600.0	90.00	0.00	7,200.0	1,479.0	80.6	1,479.6	0.00	0.00	0.00	
8,700.0	90.00	0.00	7,200.0	1,579.0	80.6	1,579.6	0.00	0.00	0.00	
8,800.0	90.00	0.00	7,200.0	1,679.0	80.6	1,679.6	0.00	0.00	0.00	
8,900.0	90.00	0.00	7,200.0	1,779.0	80.6	1,779.6	0.00	0.00	0.00	
9,000.0	90.00	0.00	7,200.0	1,879.0	80.6	1,879.6	0.00	0.00	0.00	
9,100.0	90.00	0.00	7,200.0	1,979.0	80.6	1,979.6	0.00	0.00	0.00	
9,200.0	90.00	0.00	7,200.0	2,079.0	80.6	2,079.6	0.00	0.00	0.00	
9,300.0	90.00	0.00	7,200.0	2,179.0	80.6	2,179.6	0.00	0.00	0.00	
9,400.0	90.00	0.00	7,200.0	2,279.0	80.6	2,279.6	0.00	0.00	0.00	
9,500.0	90.00	0.00	7,200.0	2,379.0	80.6	2,379.6	0.00	0.00	0.00	
9,600.0	90.00	0.00	7,200.0	2,479.0	80.6	2,479.6	0.00	0.00	0.00	

Planning Report

Database:	EDM	Local Co-ordinate Reference:	Well Suds 8-67-36-25C
Company:	Enerplus Resources (USA) Corporation	TVD Reference:	Well @ 5205.0usft
Project:	Weld County, CO	MD Reference:	Well @ 5205.0usft
Site:	SEC 36, T8N-R67W	North Reference:	True
Well:	Suds 8-67-36-25C	Survey Calculation Method:	Minimum Curvature
Wellbore:	H2		
Design:	Plan 2		

Planned Survey										
Measured Depth (usft)	Inclination (°)	Azimuth (°)	Vertical Depth (usft)	+N/-S (usft)	+E/-W (usft)	Vertical Section (usft)	Dogleg Rate (°/100usft)	Build Rate (°/100usft)	Turn Rate (°/100usft)	
9,700.0	90.00	0.00	7,200.0	2,579.0	80.6	2,579.6	0.00	0.00	0.00	
9,800.0	90.00	0.00	7,200.0	2,679.0	80.6	2,679.6	0.00	0.00	0.00	
9,900.0	90.00	0.00	7,200.0	2,779.0	80.6	2,779.6	0.00	0.00	0.00	
10,000.0	90.00	0.00	7,200.0	2,879.0	80.6	2,879.5	0.00	0.00	0.00	
10,100.0	90.00	0.00	7,200.0	2,979.0	80.6	2,979.5	0.00	0.00	0.00	
10,200.0	90.00	0.00	7,200.0	3,079.0	80.6	3,079.5	0.00	0.00	0.00	
10,300.0	90.00	0.00	7,200.0	3,179.0	80.6	3,179.5	0.00	0.00	0.00	
10,400.0	90.00	0.00	7,200.0	3,279.0	80.7	3,279.5	0.00	0.00	0.00	
10,500.0	90.00	0.00	7,200.0	3,379.0	80.7	3,379.5	0.00	0.00	0.00	
10,600.0	90.00	0.00	7,200.0	3,479.0	80.7	3,479.5	0.00	0.00	0.00	
10,700.0	90.00	0.00	7,200.0	3,579.0	80.7	3,579.5	0.00	0.00	0.00	
10,800.0	90.00	0.00	7,200.0	3,679.0	80.7	3,679.5	0.00	0.00	0.00	
10,900.0	90.00	0.00	7,200.0	3,779.0	80.7	3,779.5	0.00	0.00	0.00	
11,000.0	90.00	0.00	7,200.0	3,879.0	80.7	3,879.5	0.00	0.00	0.00	
11,100.0	90.00	0.00	7,200.0	3,979.0	80.7	3,979.5	0.00	0.00	0.00	
11,200.0	90.00	0.00	7,200.0	4,079.0	80.7	4,079.5	0.00	0.00	0.00	
11,300.0	90.00	0.00	7,200.0	4,179.0	80.7	4,179.5	0.00	0.00	0.00	
11,400.0	90.00	0.00	7,200.0	4,279.0	80.7	4,279.5	0.00	0.00	0.00	
11,500.0	90.00	0.00	7,200.0	4,379.0	80.7	4,379.5	0.00	0.00	0.00	
11,600.0	90.00	0.00	7,200.0	4,479.0	80.7	4,479.5	0.00	0.00	0.00	
11,700.0	90.00	0.00	7,200.0	4,579.0	80.7	4,579.5	0.00	0.00	0.00	
11,800.0	90.00	0.00	7,200.0	4,679.0	80.7	4,679.5	0.00	0.00	0.00	
11,900.0	90.00	0.00	7,200.0	4,779.0	80.7	4,779.5	0.00	0.00	0.00	
12,000.0	90.00	0.00	7,200.0	4,879.0	80.7	4,879.5	0.00	0.00	0.00	
12,100.0	90.00	0.00	7,200.0	4,979.0	80.7	4,979.5	0.00	0.00	0.00	
12,200.0	90.00	0.00	7,200.0	5,079.0	80.7	5,079.5	0.00	0.00	0.00	
12,300.0	90.00	0.00	7,200.0	5,179.0	80.8	5,179.5	0.00	0.00	0.00	
12,400.0	90.00	0.00	7,200.0	5,279.0	80.8	5,279.5	0.00	0.00	0.00	
12,500.0	90.00	0.00	7,200.0	5,379.0	80.8	5,379.5	0.00	0.00	0.00	
12,600.0	90.00	0.00	7,200.0	5,479.0	80.8	5,479.5	0.00	0.00	0.00	
12,700.0	90.00	0.00	7,200.0	5,579.0	80.8	5,579.5	0.00	0.00	0.00	
12,800.0	90.00	0.00	7,200.0	5,679.0	80.8	5,679.5	0.00	0.00	0.00	
12,900.0	90.00	0.00	7,200.0	5,779.0	80.8	5,779.5	0.00	0.00	0.00	
13,000.0	90.00	0.00	7,200.0	5,879.0	80.8	5,879.4	0.00	0.00	0.00	
13,100.0	90.00	0.00	7,200.0	5,979.0	80.8	5,979.4	0.00	0.00	0.00	
13,200.0	90.00	0.00	7,200.0	6,079.0	80.8	6,079.4	0.00	0.00	0.00	
13,300.0	90.00	0.00	7,200.0	6,179.0	80.8	6,179.4	0.00	0.00	0.00	
13,400.0	90.00	0.00	7,200.0	6,279.0	80.8	6,279.4	0.00	0.00	0.00	
13,500.0	90.00	0.00	7,200.0	6,379.0	80.8	6,379.4	0.00	0.00	0.00	
13,600.0	90.00	0.00	7,200.0	6,479.0	80.8	6,479.4	0.00	0.00	0.00	
13,700.0	90.00	0.00	7,200.0	6,579.0	80.8	6,579.4	0.00	0.00	0.00	
13,800.0	90.00	0.00	7,200.0	6,679.0	80.8	6,679.4	0.00	0.00	0.00	
13,900.0	90.00	0.00	7,200.0	6,779.0	80.8	6,779.4	0.00	0.00	0.00	
14,000.0	90.00	0.00	7,200.0	6,879.0	80.8	6,879.4	0.00	0.00	0.00	
14,100.0	90.00	0.00	7,200.0	6,979.0	80.8	6,979.4	0.00	0.00	0.00	
14,200.0	90.00	0.00	7,200.0	7,079.0	80.9	7,079.4	0.00	0.00	0.00	
14,300.0	90.00	0.00	7,200.0	7,179.0	80.9	7,179.4	0.00	0.00	0.00	
14,400.0	90.00	0.00	7,200.0	7,279.0	80.9	7,279.4	0.00	0.00	0.00	
14,500.0	90.00	0.00	7,200.0	7,379.0	80.9	7,379.4	0.00	0.00	0.00	
14,600.0	90.00	0.00	7,200.0	7,479.0	80.9	7,479.4	0.00	0.00	0.00	
14,700.0	90.00	0.00	7,200.0	7,579.0	80.9	7,579.4	0.00	0.00	0.00	
14,800.0	90.00	0.00	7,200.0	7,679.0	80.9	7,679.4	0.00	0.00	0.00	
14,900.0	90.00	0.00	7,200.0	7,779.0	80.9	7,779.4	0.00	0.00	0.00	
15,000.0	90.00	0.00	7,200.0	7,879.0	80.9	7,879.4	0.00	0.00	0.00	

Planning Report

Database:	EDM	Local Co-ordinate Reference:	Well Suds 8-67-36-25C
Company:	Enerplus Resources (USA) Corporation	TVD Reference:	Well @ 5205.0usft
Project:	Weld County, CO	MD Reference:	Well @ 5205.0usft
Site:	SEC 36, T8N-R67W	North Reference:	True
Well:	Suds 8-67-36-25C	Survey Calculation Method:	Minimum Curvature
Wellbore:	Hz		
Design:	Plan 2		

Planned Survey										
Measured Depth (usft)	Inclination (°)	Azimuth (°)	Vertical Depth (usft)	+N/-S (usft)	+E/-W (usft)	Vertical Section (usft)	Dogleg Rate (°/100usft)	Build Rate (°/100usft)	Turn Rate (°/100usft)	
15,100.0	90.00	0.00	7,200.0	7,979.0	80.9	7,979.4	0.00	0.00	0.00	
15,200.0	90.00	0.00	7,200.0	8,079.0	80.9	8,079.4	0.00	0.00	0.00	
15,300.0	90.00	0.00	7,200.0	8,179.0	80.9	8,179.4	0.00	0.00	0.00	
15,400.0	90.00	0.00	7,200.0	8,279.0	80.9	8,279.4	0.00	0.00	0.00	
15,500.0	90.00	0.00	7,200.0	8,379.0	80.9	8,379.4	0.00	0.00	0.00	
15,600.0	90.00	0.00	7,200.0	8,479.0	80.9	8,479.4	0.00	0.00	0.00	
15,700.0	90.00	0.00	7,200.0	8,579.0	80.9	8,579.4	0.00	0.00	0.00	
15,800.0	90.00	0.00	7,200.0	8,679.0	80.9	8,679.4	0.00	0.00	0.00	
15,900.0	90.00	0.00	7,200.0	8,779.0	80.9	8,779.4	0.00	0.00	0.00	
16,000.0	90.00	0.00	7,200.0	8,879.0	80.9	8,879.3	0.00	0.00	0.00	
16,100.0	90.00	0.00	7,200.0	8,979.0	81.0	8,979.3	0.00	0.00	0.00	
16,200.0	90.00	0.00	7,200.0	9,079.0	81.0	9,079.3	0.00	0.00	0.00	
16,300.0	90.00	0.00	7,200.0	9,179.0	81.0	9,179.3	0.00	0.00	0.00	
16,400.0	90.00	0.00	7,200.0	9,279.0	81.0	9,279.3	0.00	0.00	0.00	
16,500.0	90.00	0.00	7,200.0	9,379.0	81.0	9,379.3	0.00	0.00	0.00	
16,600.0	90.00	0.00	7,200.0	9,479.0	81.0	9,479.3	0.00	0.00	0.00	
16,700.0	90.00	0.00	7,200.0	9,579.0	81.0	9,579.3	0.00	0.00	0.00	
16,800.0	90.00	0.00	7,200.0	9,679.0	81.0	9,679.3	0.00	0.00	0.00	
16,900.0	90.00	0.00	7,200.0	9,779.0	81.0	9,779.3	0.00	0.00	0.00	
16,980.0	90.00	0.00	7,200.0	9,859.0	81.0	9,859.3	0.00	0.00	0.00	
Total Depth										

Design Targets									
Target Name	Dip Angle (°)	Dip Dir. (°)	TVD (usft)	+N/-S (usft)	+E/-W (usft)	Northing (usft)	Easting (usft)	Latitude	Longitude
- hit/miss target									
- Shape									
Suds 8-67-36-25C Targe	0.00	0.00	7,200.0	9,859.0	81.0	1,475,979.61	3,182,156.50	40° 38' 17.194 N	104° 50' 37.141 W
- plan hits target center									
- Point									

Casing Points					
Measured Depth (usft)	Vertical Depth (usft)	Name	Casing Diameter (")	Hole Diameter (")	
1,500.0	1,500.0	Surface	9-5/8	9-5/8	
7,570.0	7,200.0	Intermediate	7	7	

Plan Annotations					
Measured Depth (usft)	Vertical Depth (usft)	Local Coordinates			
		+N/-S (usft)	+E/-W (usft)	Comment	
1,500.0	1,500.0	0.0	0.0	9-5/8"	
4,977.3	4,977.3	0.0	0.0	Start 2°/100' Nudge	
6,638.0	6,627.0	-156.0	80.5	KOP - Begin 10°/100' Build	
7,570.0	7,200.0	449.0	80.5	7" - 655' FSL & 1990' FWL	
16,980.0	7,200.0	9,859.0	81.0	Total Depth	