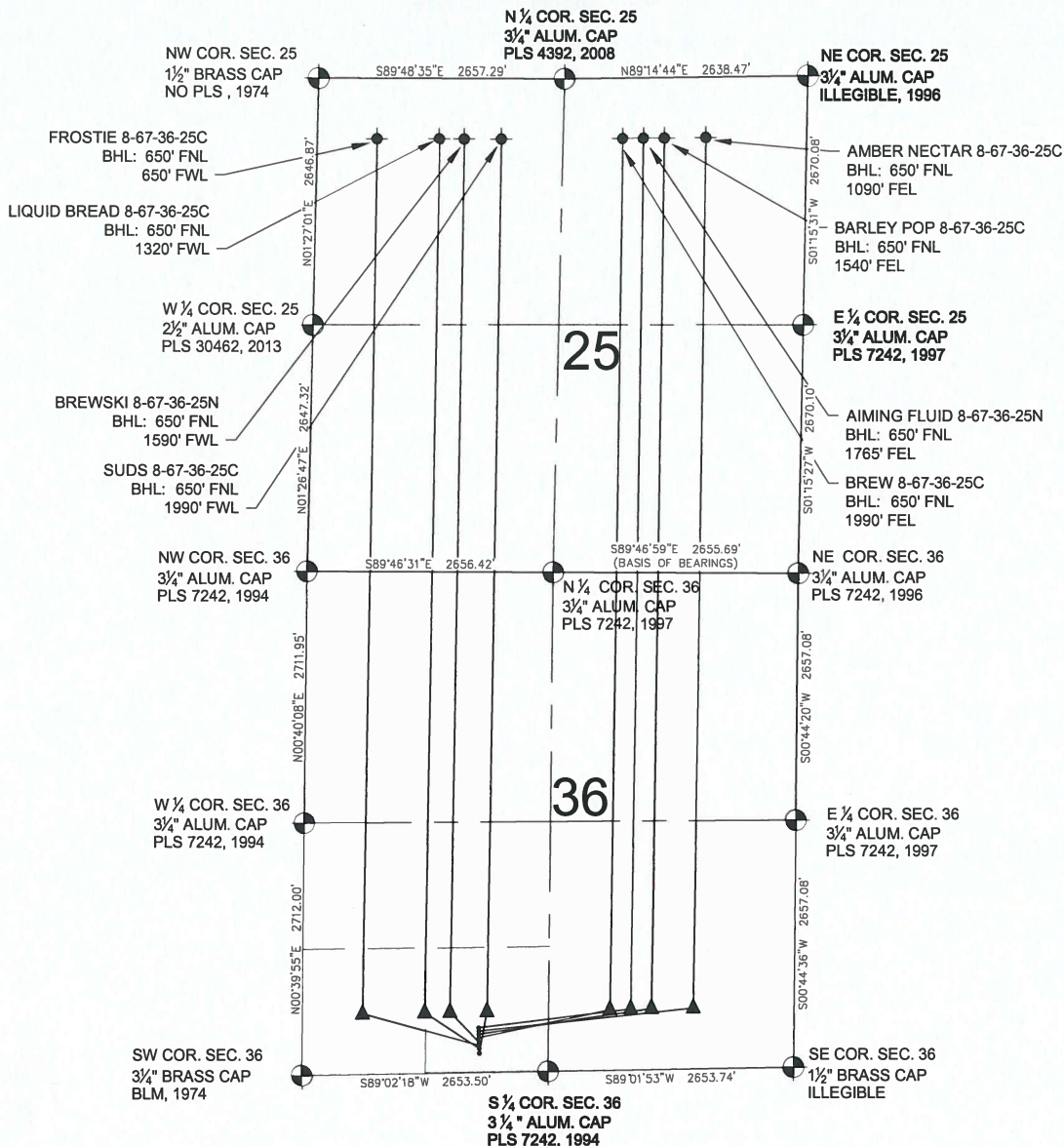


# COLORADO CRAFT PAD MULTI-WELL PLAN



## LEGEND

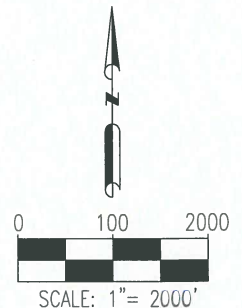
- = EXISTING MONUMENT
- = CALCULATED POSITION
- = PROPOSED WELL
- ◆ = EXISTING WELL
- ⬮ = BOTTOM HOLE
- ▲ = LANDING POINT
- LP = LANDING POINT
- BHL = BOTTOM HOLE LOCATION



## NOTES:

- THIS FIELD SURVEY CONFORMS TO THE MINIMUM STANDARDS SET BY THE C.O.G.C.C., RULE NO. 215
- BEARINGS ARE BASED ON THE ASSUMPTION THAT THE NORTH LINE OF THE NORTHEAST QUARTER OF SECTION 36, BEARS S89°46'59"E BETWEEN THE MONUMENTS SHOWN HEREON.
- ALL DISTANCES AND BEARINGS SHOWN HEREON ARE GROUND VALUES AS GPS MEASURED IN THE FIELD, WITH TIES TO WELLS MEASURED PERPENDICULAR TO SECTION LINES. THIS LOW DISTORTION PROJECTION (LDP) IS BASED ON THE NORTH AMERICAN DATUM OF 1983, U.S. SURVEY FOOT WITH A LATITUDE ORIGIN OF 40.696542° AND A LONGITUDE OF -104.867306° AND A SCALE FACTOR ON THE CENTRAL MERIDIAN OF 1.000222(EXACT). THE LDP BASIS OF BEARINGS IS GEODETIC NORTH.
- FIELD VERIFICATION OF MONUMENTS COMPLETED WITHIN 1 YEAR OF SIGNATURE DATE.

## NOTES:

- AIMING FLUID 8-67-36-25N TO BE AT 481' FSL & 1901' FWL  
BOTTOM HOLE AT 650' FNL & 1765' FEL, SEC. 25.
- AMBER NECTAR 8-67-36-25C TO BE AT 446' FSL & 1902' FWL  
BOTTOM HOLE AT 650' FNL & 1090' FEL, SEC. 25.
- BARLEY POP 8-67-36-25C TO BE AT 411' FSL & 1903' FWL.  
BOTTOM HOLE AT 650' FNL & 1540' FEL, SEC. 25.
- BREW 8-67-36-25C TO BE AT 376' FSL & 1904' FWL.  
BOTTOM HOLE AT 650' FNL & 1990' FEL, SEC. 25.
- BREWSKI 8-67-36-25N TO BE AT 326' FSL & 1906' FWL  
BOTTOM HOLE AT 650' FNL & 1590' FWL, SEC. 25.
- FROSTIE 8-67-36-25C TO BE AT 291' FSL & 1907' FWL  
BOTTOM HOLE AT 650' FNL & 650' FWL, SEC. 25.
- LIQUID BREAD 8-67-36-25C TO BE AT 256' FSL & 1908' FWL.  
BOTTOM HOLE AT 650' FNL & 1320' FWL, SEC. 25.
- SUDS 8-67-36-25C TO BE AT 206' FSL & 1909' FWL.  
BOTTOM HOLE AT 650' FNL & 1990' FWL, SEC. 25.



PREPARED BY:  7535 Hilltop Circle Denver, CO 80221	FIELD DATE: 12-29-16 DRAWING DATE: 01-09-17 BY: MDC CHECKED BY: KAD	SITE NAME: COLORADO CRAFT PAD SURFACE LOCATION: SE 1/4 SW 1/4 SEC. 36 T8N, R67W, 6TH P.M. WELD COUNTY, COLORADO	PREPARED FOR: 
------------------------------------------------------------------------------------------------------------------------------------------------	------------------------------------------------------------------------------------------	-----------------------------------------------------------------------------------------------------------------------------	--------------------------------------------------------------------------------------------------------