



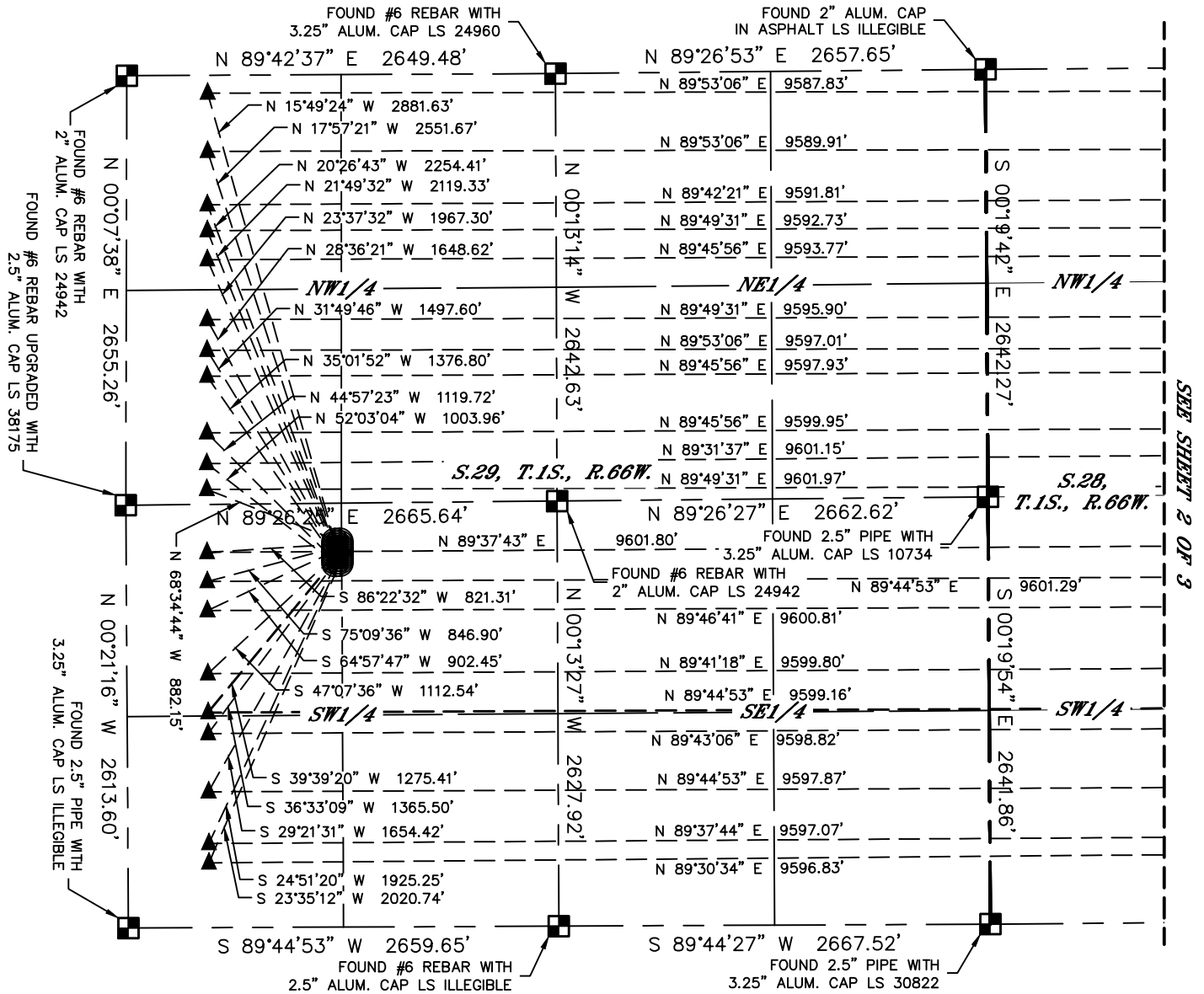
Lat40°, Inc. 6250 W. 10th Street, Unit 2, Greeley, CO 970-515-5294

MULTI-WELL PLAN

PC 1S-66-2928 PAD

THIS MAP DOES NOT REPRESENT A BOUNDARY SURVEY

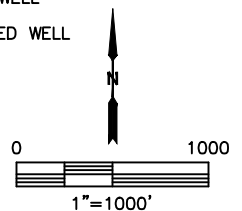
SECTION: 29
TOWNSHIP: 1S
RANGE: 66W
6TH. P.M.
ADAMS COUNTY, CO



#	WELL NAME	BHL FOOTAGE			BHL LAT °	BHL LONG °	BHL S-T-R
1	PC NORTH 1S-66-2928-1NH	170	FNL	500	FEL	39.94288	-104.77286 28-1S-66
2	PC NORTH 1S-66-2928-2NH	530	FNL	500	FEL	39.94189	-104.77286 28-1S-66
3	PC NORTH 1S-66-2928-3NH	830	FNL	500	FEL	39.94107	-104.77287 28-1S-66
4	PC NORTH 1S-66-2928-4CDH	1010	FNL	500	FEL	39.94057	-104.77287 28-1S-66
5	PC NORTH 1S-66-2928-5NH	1180	FNL	500	FEL	39.94011	-104.77287 28-1S-66
6	PC NORTH 1S-66-2928-6NH	1560	FNL	500	FEL	39.93906	-104.77288 28-1S-66
7	PC NORTH 1S-66-2928-7CDH	1760	FNL	500	FEL	39.93851	-104.77288 28-1S-66
8	PC NORTH 1S-66-2928-8NH	1900	FNL	500	FEL	39.93813	-104.77289 28-1S-66
9	PC NORTH 1S-66-2928-9NH	2250	FNL	500	FEL	39.93717	-104.77289 28-1S-66
10	PC NORTH 1S-66-2928-10CDH	2400	FNL	500	FEL	39.93676	-104.77289 28-1S-66
11	PC NORTH 1S-66-2928-11NH	2610	FNL	500	FEL	39.93618	-104.77290 28-1S-66
12	PC SOUTH 1S-66-2928-12NH	2320	FSL	500	FEL	39.93520	-104.77290 28-1S-66
13	PC SOUTH 1S-66-2928-13CDH	2120	FSL	500	FEL	39.93465	-104.77291 28-1S-66
14	PC SOUTH 1S-66-2928-14NH	1935	FSL	500	FEL	39.93415	-104.77291 28-1S-66
15	PC SOUTH 1S-66-2928-15NH	1560	FSL	500	FEL	39.93312	-104.77292 28-1S-66
16	PC SOUTH 1S-66-2928-16CDH	1310	FSL	500	FEL	39.93243	-104.77292 28-1S-66
17	PC SOUTH 1S-66-2928-17NH	1185	FSL	500	FEL	39.93209	-104.77292 28-1S-66
18	PC SOUTH 1S-66-2928-18NH	820	FSL	500	FEL	39.93109	-104.77293 28-1S-66
19	PC SOUTH 1S-66-2928-19CDH	520	FSL	500	FEL	39.93026	-104.77293 28-1S-66
20	PC SOUTH 1S-66-2928-20NH	420	FSL	500	FEL	39.92999	-104.77293 28-1S-66

LEGEND

- = ALIQUOT MONUMENT AS DESCRIBED
- = CALCULATED POSITION
- = SURFACE HOLE LOCATION (SHL)
- ▲ = ENTRY POINT LOCATION (EP)
- _{BH} = BOTTOM HOLE LOCATION (BHL)
- ⊙ = EXISTING WELL
- ⊙ = ABANDONED WELL



SHEET 1 OF 3

DATE: 1/23/2017
PROJECT#: 2016052



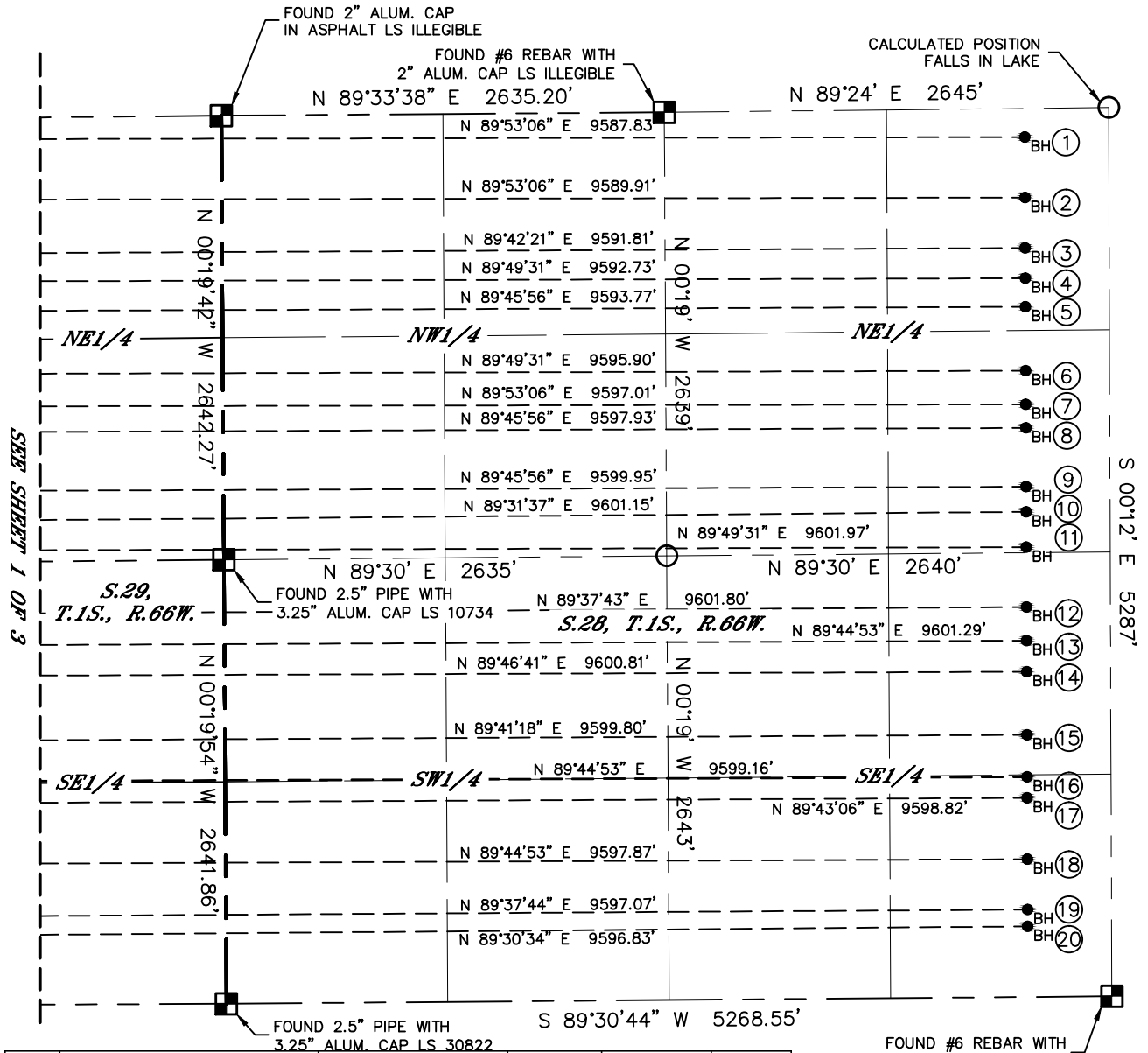
Lat40°, Inc. 6250 W. 10th Street, Unit 2, Greeley, CO 970-515-5294

MULTI-WELL PLAN

PC 1S-66-2928 PAD

THIS MAP DOES NOT REPRESENT A BOUNDARY SURVEY

SECTION: 29
TOWNSHIP: 1S
RANGE: 66W
6TH. P.M.
ADAMS COUNTY, CO



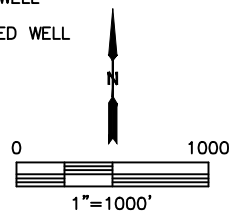
3.25 ALUM. CAP. 1S SUB22

#	WELL NAME	BHL FOOTAGE				BHL LAT °	BHL LONG °	BHL S-T-F
1	PC NORTH 1S-66-2928-1NH	170	FNL	500	FEL	39.94288	-104.77286	28-1S-66
2	PC NORTH 1S-66-2928-2NH	530	FNL	500	FEL	39.94189	-104.77286	28-1S-66
3	PC NORTH 1S-66-2928-3NH	830	FNL	500	FEL	39.94107	-104.77287	28-1S-66
4	PC NORTH 1S-66-2928-4CDH	1010	FNL	500	FEL	39.94057	-104.77287	28-1S-66
5	PC NORTH 1S-66-2928-5NH	1180	FNL	500	FEL	39.94011	-104.77287	28-1S-66
6	PC NORTH 1S-66-2928-6NH	1560	FNL	500	FEL	39.93906	-104.77288	28-1S-66
7	PC NORTH 1S-66-2928-7CDH	1760	FNL	500	FEL	39.93851	-104.77288	28-1S-66
8	PC NORTH 1S-66-2928-8NH	1900	FNL	500	FEL	39.93813	-104.77289	28-1S-66
9	PC NORTH 1S-66-2928-9NH	2250	FNL	500	FEL	39.93717	-104.77289	28-1S-66
10	PC NORTH 1S-66-2928-10CDH	2400	FNL	500	FEL	39.93676	-104.77289	28-1S-66
11	PC NORTH 1S-66-2928-11NH	2610	FNL	500	FEL	39.93618	-104.77290	28-1S-66
12	PC SOUTH 1S-66-2928-12NH	2320	FSL	500	FEL	39.93520	-104.77290	28-1S-66
13	PC SOUTH 1S-66-2928-13CDH	2120	FSL	500	FEL	39.93465	-104.77291	28-1S-66
14	PC SOUTH 1S-66-2928-14NH	1935	FSL	500	FEL	39.93415	-104.77291	28-1S-66
15	PC SOUTH 1S-66-2928-15NH	1560	FSL	500	FEL	39.93312	-104.77292	28-1S-66
16	PC SOUTH 1S-66-2928-16CDH	1310	FSL	500	FEL	39.93243	-104.77292	28-1S-66
17	PC SOUTH 1S-66-2928-17NH	1185	FSL	500	FEL	39.93209	-104.77292	28-1S-66
18	PC SOUTH 1S-66-2928-18NH	820	FSL	500	FEL	39.93109	-104.77293	28-1S-66
19	PC SOUTH 1S-66-2928-19CDH	520	FSL	500	FEL	39.93026	-104.77293	28-1S-66
20	PC SOUTH 1S-66-2928-20NH	420	FSL	500	FEL	39.92999	-104.77293	28-1S-66

FOUND #6 REBAR WITH
3.25" ALUM. CAP LS 27275

LEGEND

- = ALIQUOT MONUMENT AS DESCRIBED
- = CALCULATED POSITION
- = SURFACE HOLE LOCATION (SHL)
- ▲ = ENTRY POINT LOCATION (EP)
- = BOTTOM HOLE LOCATION (BHL)
- ⊙ = EXISTING WELL
- ⊙ = ABANDONED WELL



SHEET 2 OF 3

DATE: 1/23/2017
PROJECT#: 2016052



Lat40°, Inc. 6250 W. 10th Street, Unit 2, Greeley, CO 970-515-5294

MULTI-WELL PLAN

PC 1S-66-2928 PAD

SECTION: 29
TOWNSHIP: 1S
RANGE: 66W
6TH. P.M.
ADAMS COUNTY, CO

