

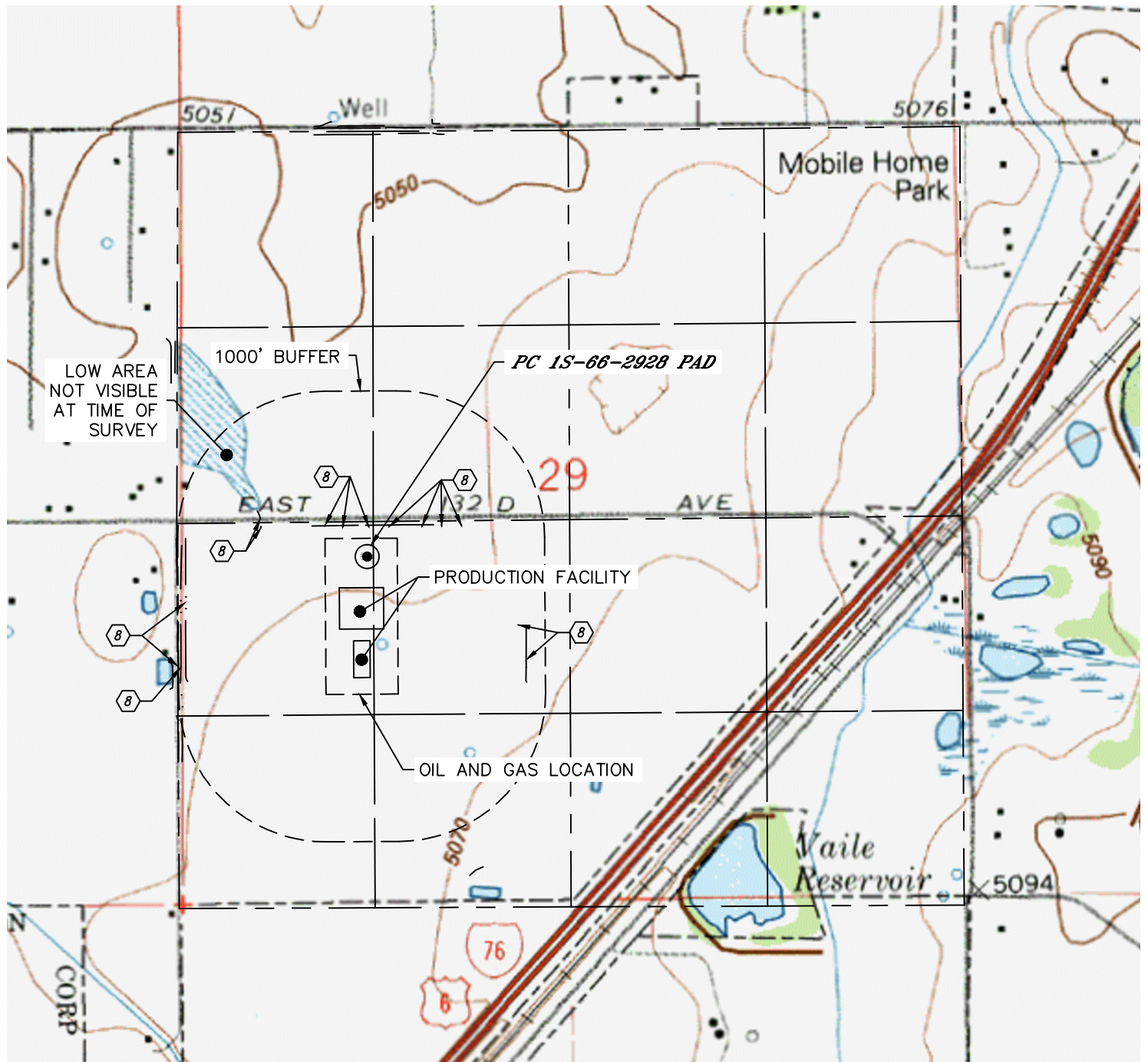


Lat40°, Inc. 6250 W. 10th Street, Unit 2, Greeley, CO 970-515-5294

HYDROLOGY MAP

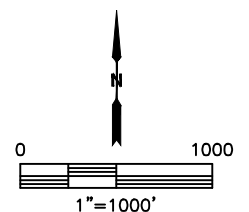
PC 1S-66-2928 PAD

SECTION: 29
TOWNSHIP: 1S
RANGE: 66W
6TH. P.M.
ADAMS COUNTY, CO



DISTANCES MEASURED FROM THE EDGE OF THE OIL AND GAS LOCATION.

⬡ DITCH (3) 77' & 88' N, 186', 312' & 445' NE, 442' & 459' NW
817' & 870' E, 982', 949' & 1002' W



DATE: 1/24/2017
PROJECT#: 2016052