



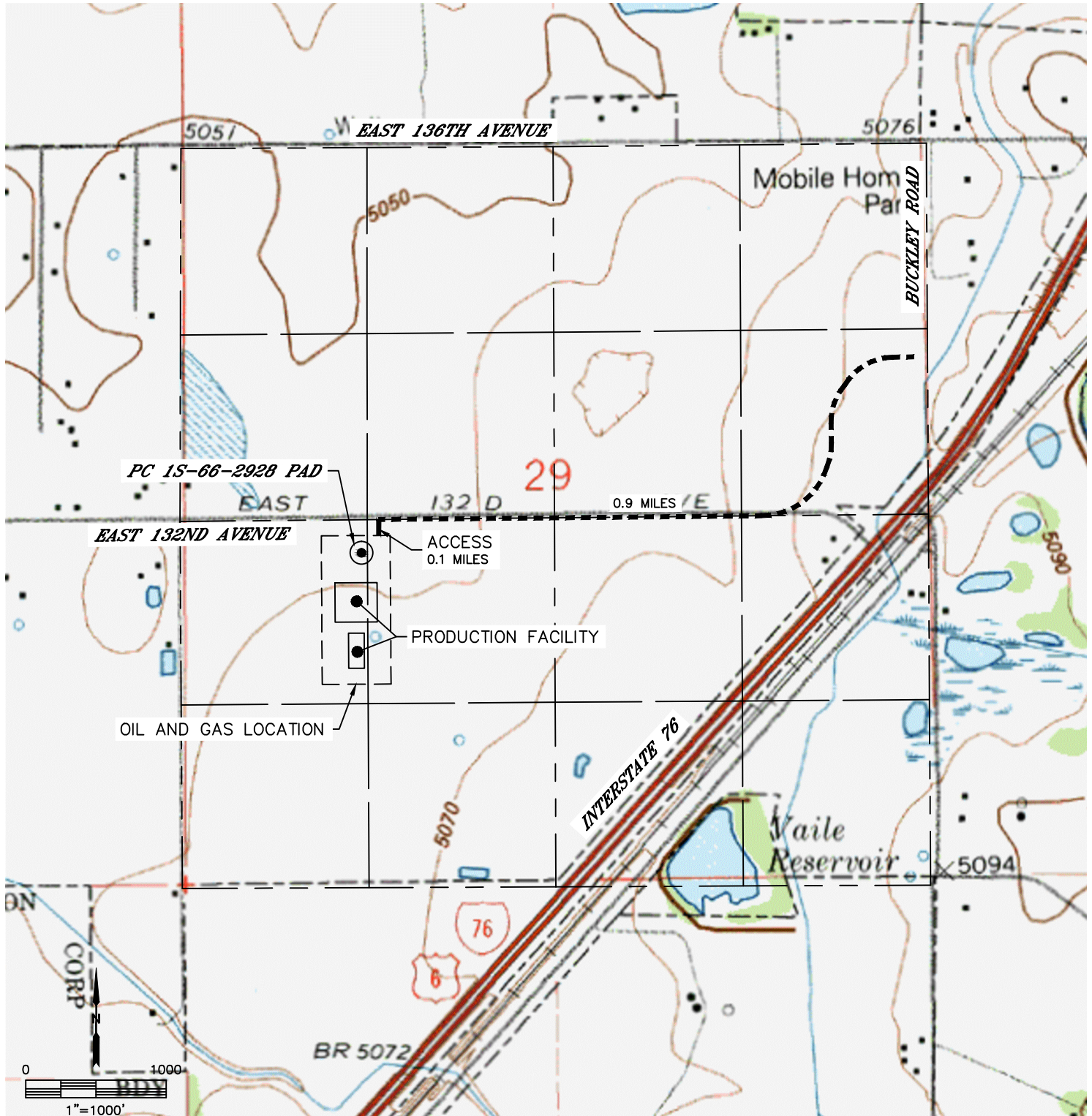
Lat40°, Inc. 6250 W. 10th Street, Unit 2, Greeley, CO 970-515-5294

## ACCESS ROAD MAP

PC 1S-66-2928 PAD

SECTION: 29  
TOWNSHIP: 1S  
RANGE: 66W  
6TH. P.M.  
ADAMS COUNTY, CO

DRIVING DIRECTIONS TO PC 1S-66-2928 PAD  
FROM THE INTERSECTION OF BUCKLEY ROAD AND EAST 132ND AVENUE HEAD WEST ALONG EAST 132ND AVENUE FOR 0.9 MILES TO A PROPOSED ACCESS TO THE SOUTH. GO SOUTH FOR 0.1 MILES TO THE PROPOSED DRILL PAD AND PRODUCTION FACILITY.





Lat40°, Inc. 6250 W. 10th Street, Unit 2, Greeley, CO 970-515-5294

# ACCESS ROAD MAP

PC 1S-66-2928 PAD

SECTION: 29  
TOWNSHIP: 1S  
RANGE: 66W  
6TH. P.M.  
ADAMS COUNTY, CO

