



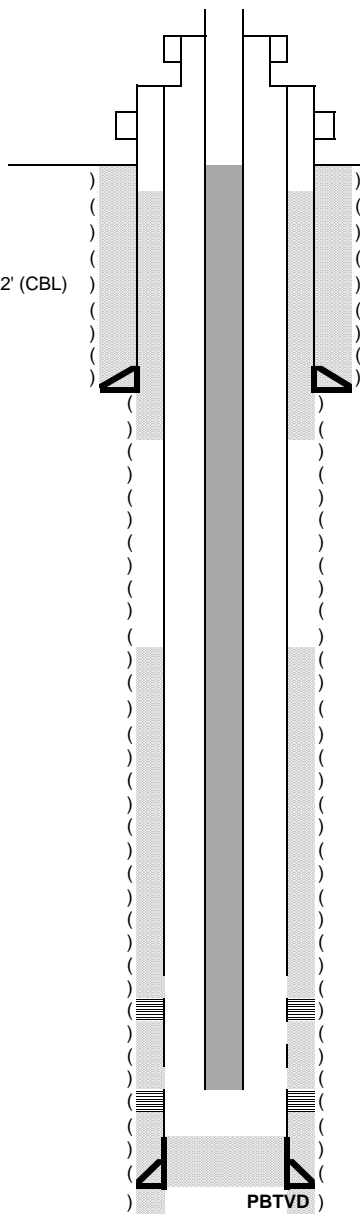
WELLBORE DIAGRAM

CURRENT WBD

775' FNL & 660' FEL

Operator: Great Western Operating Co. LLC
 Well Name: GW 23-44
 Lease Number:
 Location: NENE 26-T6N-R67W
 Field: Lapoudre - #48125
 County, State: Weld, CO
 API Number: 05-123-24723
 Diagram Date: 7/6/2016
 Lat/Long: 40.46306/-104.85381

Annular Fill from 1300' to 42' (CBL)
 Aquifer Coverage
 (1/15/2016)



KB ' 4776'

GL ' 4761'

Spud Date: 9/11/2007
 Date TD Reached 9/16/2007
 Completion Date:

Surface Casing
 (12-1/4" Hole Size) 8-5/8" 24 # csg set @ 456' (10 jts.)
 w/ 360 sx cmt

Production casing
 (7-7/8" Hole Size) 4-1/2" 11.6# csg set @ 7478' (176 jts.)
 w/ 270 13.4# cmt, 115 sx 11# cmt & 170 sx 14.6# cmt

Tubing
 2-3/8" set @ 7303' (7/6/2016)

TOC = 3290' (CBL)
 3298' good bonding

Formation Tops

Parkman 3614'
 Sussex 4386'
 Shannon 4752'
 Niobrara 7002'
 Ft. Hays 7306'
 Codell 7329'

Perforations

Niobrara 7007-7015, 7130-7150'

Codell 7330'-7350' (7333'-7341' Re-Frac)

TVD = 7289'
 MD = 7510'

PBTVD
 PBMD = 7463'