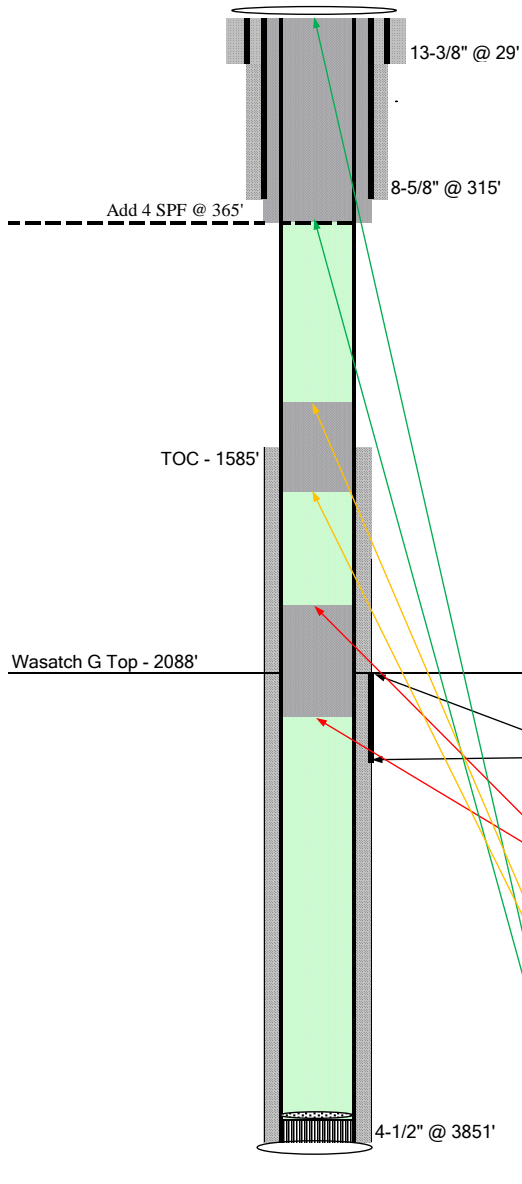


Exploration and Production

Well P&A Procedure



Well Name **DOE 1-W-28**
 Location **SWNE 28-6S-95W**
 Field **Parachute**
 County **Garfield, CO**
 API **05 045 06586**
 KB **5557'**
 Footages **1915' FNL, 1755' FEL**

Spud 8/31/1989

Casing	29'	13-3/8" 24#	
Cement	Redimix to surface		
Casing	315'	8-5/8" 24#	
Cement	100 sx	50/50 Poz	
	50 sx	Class G	
Casing	3851'	4-1/2" 10.5#	0.08955 ft ³ /Lft
Cement	610 sx	50/50 Poz	

Tubing **0'** **2-3/8"**

Formation Tops

Wasatch **2088'**

TOC - Bond Log **1585'**

Completed Intervals

	<u>Depth</u>	<u># Holes</u>
Wasatch G	2088' - 2148'	59

P&A Calculations

	Shallow	Deep
Primary cement, balanced plug from	1,970'	2,126'
13.9698 ft ³	between desired plug depths	
1.15 ft ³ /sk yield	15.8 lb/gal cmt	
12.15 sx for 156' plug in 4.5" 10.5# CSG		
165% excess		
20.00 sx Total		
Secondary cement, balanced plug from	1,318'	1,660'
30.6261 ft ³	between desired plug depths	
1.15 ft ³ /sk yield	15.8 lb/gal cmt	
26.63 sx for 342' plug in 4.5" 10.5# CSG		
100% excess		
26.63 sx Total		