

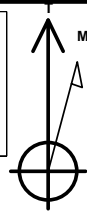
Plan: Plan 1 (Will Trust 6-62-10-4846BN2/OH)

Created By: Seth Burstad Date: 1-23-2017

**PROJECT DETAILS: Weld County, CO NAD 83**

Geodetic System: US State Plane 1983  
 Datum: North American Datum 1983  
 Ellipsoid: GRS 1980  
 Zone: Colorado Northern Zone  
 System Datum: Mean Sea Level  
 Local North: True

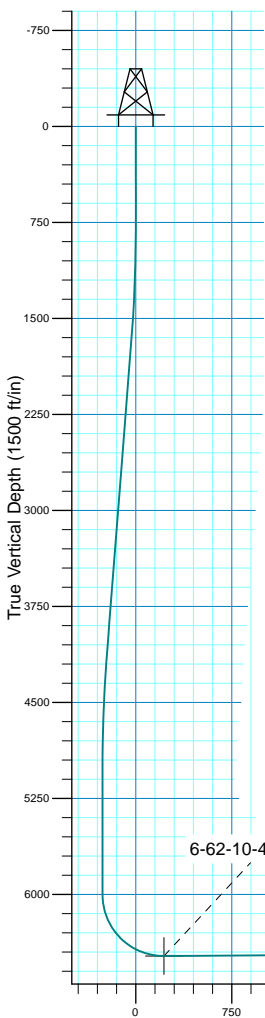
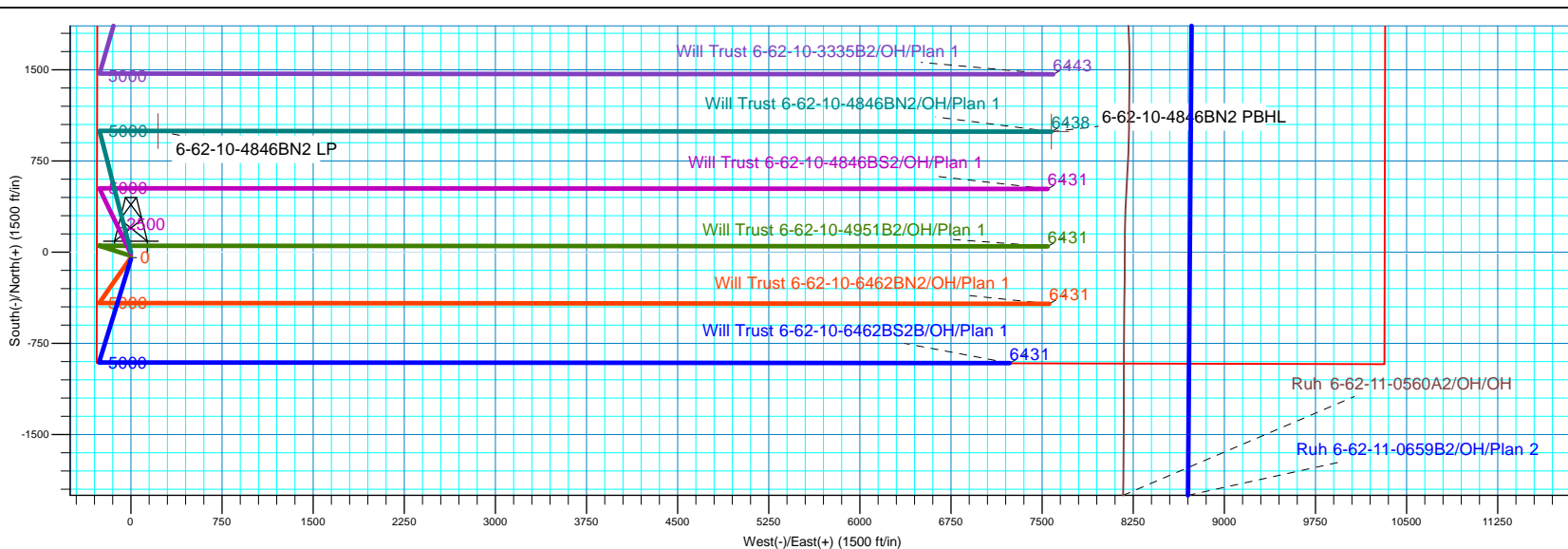
Project: Weld County, CO NAD 83  
 Site: Will Trust 6-62-10\_11 SWSW Pad  
 Well: Will Trust 6-62-10-4846BN2  
 Wellbore: OH  
 Design: Plan 1



Azimuths to True North  
 Magnetic North: 8.16°



Magnetic Field  
 Strength: 52559.9nT  
 Dip Angle: 67.04°  
 Date: 1/23/2017  
 Model: BGGM2016



**SECTION DETAILS**

MD	Inc	Azi	TVD	+N/-S	+E/-W	Dleg	TFace	V Sect
0.00	0.00	0.000	0.00	0.00	0.00	0.00	0.00	0.00
800.00	0.00	0.000	800.00	0.00	0.00	0.00	0.00	0.00
1658.11	17.16	345.460	1645.33	123.47	-32.03	2.00	345.46	-32.11
4284.38	17.16	345.460	4154.67	873.61	-226.58	0.00	0.00	-227.18
5142.49	0.00	0.000	5000.00	997.08	-258.61	2.00	180.00	-259.29
6146.03	0.00	0.000	6003.54	997.08	-258.61	0.00	0.00	-259.29
6898.82	90.33	90.039	6481.00	996.75	221.65	12.00	90.04	220.97
14253.90	90.33	90.039	6438.00	991.73	7576.60	0.00	0.00	7575.92

**WELL DETAILS: Will Trust 6-62-10-4846BN2**

GL 4796' & KB 20' @ 4816.00ft				4796.00		
+N/-S	+E/-W	Northing	Easting	Latitude	Longitude	
0.00	0.00	1426070.03	3329004.65	40° 29' 48.980 N	104° 19' 1.099 W	

Vertical Section at 90.039° (1500 ft/in)



## **Bill Barrett Corp.**

Weld County, CO NAD 83  
Will Trust 6-62-10\_11 SWSW Pad  
Will Trust 6-62-10-4846BN2

OH

Plan: Plan 1

## **Standard Planning Report**

23 January, 2017



<b>Database:</b>	Casper District	<b>Local Co-ordinate Reference:</b>	Well Will Trust 6-62-10-4846BN2
<b>Company:</b>	Bill Barrett Corp.	<b>TVD Reference:</b>	GL 4796' & KB 20' @ 4816.00ft
<b>Project:</b>	Weld County, CO NAD 83	<b>MD Reference:</b>	GL 4796' & KB 20' @ 4816.00ft
<b>Site:</b>	Will Trust 6-62-10_11 SWSW Pad	<b>North Reference:</b>	True
<b>Well:</b>	Will Trust 6-62-10-4846BN2	<b>Survey Calculation Method:</b>	Minimum Curvature
<b>Wellbore:</b>	OH		
<b>Design:</b>	Plan 1		

<b>Project</b>	Weld County, CO NAD 83		
<b>Map System:</b>	US State Plane 1983	<b>System Datum:</b>	Mean Sea Level
<b>Geo Datum:</b>	North American Datum 1983		
<b>Map Zone:</b>	Colorado Northern Zone		

Site		Will Trust 6-62-10_11 SWSW Pad, Site Center : Will Trust 6-62-10-4846BN2			
Site Position:		Northing:	1,426,070.05 usft	Latitude:	40° 29' 48.980 N
From:	Lat/Long	Easting:	3,329,004.65 usft	Longitude:	104° 19' 1.099 W
Position Uncertainty:	0.00 ft	Slot Radius:	13.200 in	Grid Convergence:	0.76 °

Well	Will Trust 6-62-10-4846BN2, 910' FSL 280' FWL Sec 10 T6N R62W					
Well Position	+N/-S	-0.01 ft	Northing:	1,426,070.04 usft	Latitude:	40° 29' 48.980 N
	+E/-W	0.00 ft	Easting:	3,329,004.65 usft	Longitude:	104° 19' 1.099 W
Position Uncertainty		0.00 ft	Wellhead Elevation:	0.00 ft	Ground Level:	4,796.00 ft

<b>Wellbore</b>	OH				
<b>Magnetics</b>	<b>Model Name</b>	<b>Sample Date</b>	<b>Declination (°)</b>	<b>Dip Angle (°)</b>	<b>Field Strength (nT)</b>
	BGGM2016	1/23/2017	8.16	67.04	52,560

<b>Design</b>	Plan 1			
<b>Audit Notes:</b>				
<b>Version:</b>	<b>Phase:</b>	PLAN	<b>Tie On Depth:</b>	0.00
<b>Vertical Section:</b>	<b>Depth From (TVD) (ft)</b>	<b>+N/-S (ft)</b>	<b>+E/-W (ft)</b>	<b>Direction (°)</b>
	0.00	0.00	0.00	90.039

<b>Plan Sections</b>										
Measured Depth (ft)	Inclination (°)	Azimuth (°)	Vertical Depth (ft)	+N/-S (ft)	+E/-W (ft)	Dogleg Rate (°/100ft)	Build Rate (°/100ft)	Turn Rate (°/100ft)	TFO (°)	Target
0.00	0.00	0.000	0.00	0.00	0.00	0.00	0.00	0.00	0.00	
800.00	0.00	0.000	800.00	0.00	0.00	0.00	0.00	0.00	0.00	
1,658.11	17.16	345.460	1,645.33	123.47	-32.03	2.00	2.00	0.00	345.46	
4,284.38	17.16	345.460	4,154.67	873.61	-226.58	0.00	0.00	0.00	0.00	
5,142.49	0.00	0.000	5,000.00	997.08	-258.61	2.00	-2.00	0.00	180.00	
6,146.03	0.00	0.000	6,003.54	997.08	-258.61	0.00	0.00	0.00	0.00	
6,898.82	90.33	90.039	6,481.00	996.75	221.65	12.00	12.00	11.96	90.04	
14,253.90	90.33	90.039	6,438.00	991.72	7,576.60	0.00	0.00	0.00	0.00	6-62-10-4846BN2 PB

<b>Database:</b>	Casper District	<b>Local Co-ordinate Reference:</b>	Well Will Trust 6-62-10-4846BN2
<b>Company:</b>	Bill Barrett Corp.	<b>TVD Reference:</b>	GL 4796' & KB 20' @ 4816.00ft
<b>Project:</b>	Weld County, CO NAD 83	<b>MD Reference:</b>	GL 4796' & KB 20' @ 4816.00ft
<b>Site:</b>	Will Trust 6-62-10_11 SWSW Pad	<b>North Reference:</b>	True
<b>Well:</b>	Will Trust 6-62-10-4846BN2	<b>Survey Calculation Method:</b>	Minimum Curvature
<b>Wellbore:</b>	OH		
<b>Design:</b>	Plan 1		

Planned Survey									
Measured Depth (ft)	Inclination (°)	Azimuth (°)	Vertical Depth (ft)	+N/-S (ft)	+E/-W (ft)	Vertical Section (ft)	Dogleg Rate (°/100ft)	Build Rate (°/100ft)	Turn Rate (°/100ft)
0.00	0.00	0.000	0.00	0.00	0.00	0.00	0.00	0.00	0.00
100.00	0.00	0.000	100.00	0.00	0.00	0.00	0.00	0.00	0.00
200.00	0.00	0.000	200.00	0.00	0.00	0.00	0.00	0.00	0.00
300.00	0.00	0.000	300.00	0.00	0.00	0.00	0.00	0.00	0.00
400.00	0.00	0.000	400.00	0.00	0.00	0.00	0.00	0.00	0.00
500.00	0.00	0.000	500.00	0.00	0.00	0.00	0.00	0.00	0.00
600.00	0.00	0.000	600.00	0.00	0.00	0.00	0.00	0.00	0.00
700.00	0.00	0.000	700.00	0.00	0.00	0.00	0.00	0.00	0.00
800.00	0.00	0.000	800.00	0.00	0.00	0.00	0.00	0.00	0.00
<b>Start Build 2.00</b>									
900.00	2.00	345.460	899.98	1.69	-0.44	-0.44	2.00	2.00	0.00
1,000.00	4.00	345.460	999.84	6.75	-1.75	-1.76	2.00	2.00	0.00
1,100.00	6.00	345.460	1,099.45	15.19	-3.94	-3.95	2.00	2.00	0.00
1,200.00	8.00	345.460	1,198.70	26.99	-7.00	-7.02	2.00	2.00	0.00
1,300.00	10.00	345.460	1,297.47	42.13	-10.93	-10.96	2.00	2.00	0.00
1,400.00	12.00	345.460	1,395.62	60.60	-15.72	-15.76	2.00	2.00	0.00
1,500.00	14.00	345.460	1,493.06	82.37	-21.36	-21.42	2.00	2.00	0.00
1,600.00	16.00	345.460	1,589.64	107.42	-27.86	-27.94	2.00	2.00	0.00
1,658.11	17.16	345.460	1,645.33	123.47	-32.03	-32.11	2.00	2.00	0.00
<b>Start 2626.27 hold at 1658.11 MD</b>									
1,700.00	17.16	345.460	1,685.36	135.44	-35.13	-35.22	0.00	0.00	0.00
1,800.00	17.16	345.460	1,780.91	164.00	-42.54	-42.65	0.00	0.00	0.00
1,900.00	17.16	345.460	1,876.45	192.56	-49.94	-50.08	0.00	0.00	0.00
2,000.00	17.16	345.460	1,972.00	221.13	-57.35	-57.50	0.00	0.00	0.00
2,100.00	17.16	345.460	2,067.55	249.69	-64.76	-64.93	0.00	0.00	0.00
2,200.00	17.16	345.460	2,163.10	278.25	-72.17	-72.36	0.00	0.00	0.00
2,300.00	17.16	345.460	2,258.64	306.81	-79.58	-79.79	0.00	0.00	0.00
2,400.00	17.16	345.460	2,354.19	335.38	-86.99	-87.21	0.00	0.00	0.00
2,500.00	17.16	345.460	2,449.74	363.94	-94.39	-94.64	0.00	0.00	0.00
2,600.00	17.16	345.460	2,545.29	392.50	-101.80	-102.07	0.00	0.00	0.00
2,700.00	17.16	345.460	2,640.83	421.07	-109.21	-109.50	0.00	0.00	0.00
2,800.00	17.16	345.460	2,736.38	449.63	-116.62	-116.92	0.00	0.00	0.00
2,900.00	17.16	345.460	2,831.93	478.19	-124.03	-124.35	0.00	0.00	0.00
3,000.00	17.16	345.460	2,927.48	506.75	-131.44	-131.78	0.00	0.00	0.00
3,100.00	17.16	345.460	3,023.02	535.32	-138.84	-139.21	0.00	0.00	0.00
3,200.00	17.16	345.460	3,118.57	563.88	-146.25	-146.64	0.00	0.00	0.00
3,300.00	17.16	345.460	3,214.12	592.44	-153.66	-154.06	0.00	0.00	0.00
3,400.00	17.16	345.460	3,309.67	621.00	-161.07	-161.49	0.00	0.00	0.00
3,500.00	17.16	345.460	3,405.21	649.57	-168.48	-168.92	0.00	0.00	0.00
3,600.00	17.16	345.460	3,500.76	678.13	-175.88	-176.35	0.00	0.00	0.00
3,700.00	17.16	345.460	3,596.31	706.69	-183.29	-183.77	0.00	0.00	0.00
3,800.00	17.16	345.460	3,691.85	735.25	-190.70	-191.20	0.00	0.00	0.00
3,900.00	17.16	345.460	3,787.40	763.82	-198.11	-198.63	0.00	0.00	0.00
4,000.00	17.16	345.460	3,882.95	792.38	-205.52	-206.06	0.00	0.00	0.00
4,100.00	17.16	345.460	3,978.50	820.94	-212.93	-213.48	0.00	0.00	0.00
4,200.00	17.16	345.460	4,074.04	849.51	-220.33	-220.91	0.00	0.00	0.00
4,284.38	17.16	345.460	4,154.67	873.61	-226.58	-227.18	0.00	0.00	0.00
<b>Start Drop -2.00</b>									
4,300.00	16.85	345.460	4,169.60	878.03	-227.73	-228.33	2.00	-2.00	0.00
4,400.00	14.85	345.460	4,265.80	904.46	-234.59	-235.20	2.00	-2.00	0.00
4,500.00	12.85	345.460	4,362.88	927.63	-240.60	-241.23	2.00	-2.00	0.00
4,600.00	10.85	345.460	4,460.75	947.51	-245.75	-246.40	2.00	-2.00	0.00
4,700.00	8.85	345.460	4,559.27	964.07	-250.05	-250.70	2.00	-2.00	0.00

<b>Database:</b>	Casper District	<b>Local Co-ordinate Reference:</b>	Well Will Trust 6-62-10-4846BN2
<b>Company:</b>	Bill Barrett Corp.	<b>TVD Reference:</b>	GL 4796' & KB 20' @ 4816.00ft
<b>Project:</b>	Weld County, CO NAD 83	<b>MD Reference:</b>	GL 4796' & KB 20' @ 4816.00ft
<b>Site:</b>	Will Trust 6-62-10_11 SWSW Pad	<b>North Reference:</b>	True
<b>Well:</b>	Will Trust 6-62-10-4846BN2	<b>Survey Calculation Method:</b>	Minimum Curvature
<b>Wellbore:</b>	OH		
<b>Design:</b>	Plan 1		

Planned Survey									
Measured Depth (ft)	Inclination (°)	Azimuth (°)	Vertical Depth (ft)	+N/-S (ft)	+E/-W (ft)	Vertical Section (ft)	Dogleg Rate (°/100ft)	Build Rate (°/100ft)	Turn Rate (°/100ft)
4,800.00	6.85	345.460	4,658.33	977.29	-253.48	-254.14	2.00	-2.00	0.00
4,900.00	4.85	345.460	4,757.80	987.15	-256.04	-256.71	2.00	-2.00	0.00
5,000.00	2.85	345.460	4,857.57	993.65	-257.72	-258.40	2.00	-2.00	0.00
5,100.00	0.85	345.460	4,957.51	996.78	-258.53	-259.21	2.00	-2.00	0.00
5,142.49	0.00	0.000	5,000.00	997.08	-258.61	-259.29	2.00	-2.00	0.00
Start 1003.54 hold at 5142.49 MD									
5,200.00	0.00	0.000	5,057.51	997.08	-258.61	-259.29	0.00	0.00	0.00
5,300.00	0.00	0.000	5,157.51	997.08	-258.61	-259.29	0.00	0.00	0.00
5,400.00	0.00	0.000	5,257.51	997.08	-258.61	-259.29	0.00	0.00	0.00
5,500.00	0.00	0.000	5,357.51	997.08	-258.61	-259.29	0.00	0.00	0.00
5,600.00	0.00	0.000	5,457.51	997.08	-258.61	-259.29	0.00	0.00	0.00
5,700.00	0.00	0.000	5,557.51	997.08	-258.61	-259.29	0.00	0.00	0.00
5,800.00	0.00	0.000	5,657.51	997.08	-258.61	-259.29	0.00	0.00	0.00
5,900.00	0.00	0.000	5,757.51	997.08	-258.61	-259.29	0.00	0.00	0.00
6,000.00	0.00	0.000	5,857.51	997.08	-258.61	-259.29	0.00	0.00	0.00
6,100.00	0.00	0.000	5,957.51	997.08	-258.61	-259.29	0.00	0.00	0.00
6,146.03	0.00	0.000	6,003.54	997.08	-258.61	-259.29	0.00	0.00	0.00
Start DLS 12.00 TFO 90.04									
6,200.00	6.48	90.039	6,057.40	997.08	-255.56	-256.24	12.00	12.00	0.00
6,300.00	18.48	90.039	6,154.86	997.06	-234.00	-234.68	12.00	12.00	0.00
6,400.00	30.48	90.039	6,245.70	997.03	-192.64	-193.32	12.00	12.00	0.00
6,500.00	42.48	90.039	6,325.97	996.99	-133.30	-133.98	12.00	12.00	0.00
6,600.00	54.48	90.039	6,392.14	996.94	-58.57	-59.25	12.00	12.00	0.00
6,700.00	66.48	90.039	6,441.33	996.88	28.29	27.61	12.00	12.00	0.00
6,800.00	78.48	90.039	6,471.38	996.82	123.47	122.79	12.00	12.00	0.00
6,898.82	90.33	90.039	6,481.00	996.75	221.65	220.97	12.00	12.00	0.00
Start 7355.08 hold at 6898.82 MD									
6,900.00	90.33	90.039	6,480.99	996.75	222.83	222.15	0.00	0.00	0.00
7,000.00	90.33	90.039	6,480.41	996.68	322.83	322.15	0.00	0.00	0.00
7,100.00	90.33	90.039	6,479.82	996.61	422.82	422.14	0.00	0.00	0.00
7,200.00	90.33	90.039	6,479.24	996.55	522.82	522.14	0.00	0.00	0.00
7,300.00	90.33	90.039	6,478.65	996.48	622.82	622.14	0.00	0.00	0.00
7,400.00	90.33	90.039	6,478.07	996.41	722.82	722.14	0.00	0.00	0.00
7,500.00	90.33	90.039	6,477.48	996.34	822.82	822.14	0.00	0.00	0.00
7,600.00	90.33	90.039	6,476.90	996.27	922.81	922.14	0.00	0.00	0.00
7,700.00	90.33	90.039	6,476.31	996.20	1,022.81	1,022.13	0.00	0.00	0.00
7,800.00	90.33	90.039	6,475.73	996.14	1,122.81	1,122.13	0.00	0.00	0.00
7,900.00	90.33	90.039	6,475.14	996.07	1,222.81	1,222.13	0.00	0.00	0.00
8,000.00	90.33	90.039	6,474.56	996.00	1,322.81	1,322.13	0.00	0.00	0.00
8,100.00	90.33	90.039	6,473.97	995.93	1,422.81	1,422.13	0.00	0.00	0.00
8,200.00	90.33	90.039	6,473.39	995.86	1,522.80	1,522.13	0.00	0.00	0.00
8,300.00	90.33	90.039	6,472.81	995.79	1,622.80	1,622.12	0.00	0.00	0.00
8,400.00	90.33	90.039	6,472.22	995.72	1,722.80	1,722.12	0.00	0.00	0.00
8,500.00	90.33	90.039	6,471.64	995.66	1,822.80	1,822.12	0.00	0.00	0.00
8,600.00	90.33	90.039	6,471.05	995.59	1,922.80	1,922.12	0.00	0.00	0.00
8,700.00	90.33	90.039	6,470.47	995.52	2,022.80	2,022.12	0.00	0.00	0.00
8,800.00	90.33	90.039	6,469.88	995.45	2,122.79	2,122.12	0.00	0.00	0.00
8,900.00	90.33	90.039	6,469.30	995.38	2,222.79	2,222.11	0.00	0.00	0.00
9,000.00	90.33	90.039	6,468.71	995.31	2,322.79	2,322.11	0.00	0.00	0.00
9,100.00	90.33	90.039	6,468.13	995.25	2,422.79	2,422.11	0.00	0.00	0.00
9,200.00	90.33	90.039	6,467.54	995.18	2,522.79	2,522.11	0.00	0.00	0.00
9,300.00	90.33	90.039	6,466.96	995.11	2,622.79	2,622.11	0.00	0.00	0.00
9,400.00	90.33	90.039	6,466.38	995.04	2,722.78	2,722.11	0.00	0.00	0.00

<b>Database:</b>	Casper District	<b>Local Co-ordinate Reference:</b>	Well Will Trust 6-62-10-4846BN2
<b>Company:</b>	Bill Barrett Corp.	<b>TVD Reference:</b>	GL 4796' & KB 20' @ 4816.00ft
<b>Project:</b>	Weld County, CO NAD 83	<b>MD Reference:</b>	GL 4796' & KB 20' @ 4816.00ft
<b>Site:</b>	Will Trust 6-62-10_11 SWSW Pad	<b>North Reference:</b>	True
<b>Well:</b>	Will Trust 6-62-10-4846BN2	<b>Survey Calculation Method:</b>	Minimum Curvature
<b>Wellbore:</b>	OH		
<b>Design:</b>	Plan 1		

Planned Survey									
Measured Depth (ft)	Inclination (°)	Azimuth (°)	Vertical Depth (ft)	+N/-S (ft)	+E/-W (ft)	Vertical Section (ft)	Dogleg Rate (°/100ft)	Build Rate (°/100ft)	Turn Rate (°/100ft)
9,500.00	90.33	90.039	6,465.79	994.97	2,822.78	2,822.10	0.00	0.00	0.00
9,600.00	90.33	90.039	6,465.21	994.90	2,922.78	2,922.10	0.00	0.00	0.00
9,700.00	90.33	90.039	6,464.62	994.84	3,022.78	3,022.10	0.00	0.00	0.00
9,800.00	90.33	90.039	6,464.04	994.77	3,122.78	3,122.10	0.00	0.00	0.00
9,900.00	90.33	90.039	6,463.45	994.70	3,222.77	3,222.10	0.00	0.00	0.00
10,000.00	90.33	90.039	6,462.87	994.63	3,322.77	3,322.10	0.00	0.00	0.00
10,100.00	90.33	90.039	6,462.28	994.56	3,422.77	3,422.09	0.00	0.00	0.00
10,200.00	90.33	90.039	6,461.70	994.49	3,522.77	3,522.09	0.00	0.00	0.00
10,300.00	90.33	90.039	6,461.11	994.42	3,622.77	3,622.09	0.00	0.00	0.00
10,400.00	90.33	90.039	6,460.53	994.36	3,722.77	3,722.09	0.00	0.00	0.00
10,500.00	90.33	90.039	6,459.94	994.29	3,822.76	3,822.09	0.00	0.00	0.00
10,600.00	90.33	90.039	6,459.36	994.22	3,922.76	3,922.09	0.00	0.00	0.00
10,700.00	90.33	90.039	6,458.78	994.15	4,022.76	4,022.08	0.00	0.00	0.00
10,800.00	90.33	90.039	6,458.19	994.08	4,122.76	4,122.08	0.00	0.00	0.00
10,900.00	90.33	90.039	6,457.61	994.01	4,222.76	4,222.08	0.00	0.00	0.00
11,000.00	90.33	90.039	6,457.02	993.95	4,322.76	4,322.08	0.00	0.00	0.00
11,100.00	90.33	90.039	6,456.44	993.88	4,422.75	4,422.08	0.00	0.00	0.00
11,200.00	90.33	90.039	6,455.85	993.81	4,522.75	4,522.07	0.00	0.00	0.00
11,300.00	90.33	90.039	6,455.27	993.74	4,622.75	4,622.07	0.00	0.00	0.00
11,400.00	90.33	90.039	6,454.68	993.67	4,722.75	4,722.07	0.00	0.00	0.00
11,500.00	90.33	90.039	6,454.10	993.60	4,822.75	4,822.07	0.00	0.00	0.00
11,600.00	90.33	90.039	6,453.51	993.54	4,922.75	4,922.07	0.00	0.00	0.00
11,700.00	90.33	90.039	6,452.93	993.47	5,022.74	5,022.07	0.00	0.00	0.00
11,800.00	90.33	90.039	6,452.35	993.40	5,122.74	5,122.06	0.00	0.00	0.00
11,900.00	90.33	90.039	6,451.76	993.33	5,222.74	5,222.06	0.00	0.00	0.00
12,000.00	90.33	90.039	6,451.18	993.26	5,322.74	5,322.06	0.00	0.00	0.00
12,100.00	90.33	90.039	6,450.59	993.19	5,422.74	5,422.06	0.00	0.00	0.00
12,200.00	90.33	90.039	6,450.01	993.13	5,522.74	5,522.06	0.00	0.00	0.00
12,300.00	90.33	90.039	6,449.42	993.06	5,622.73	5,622.06	0.00	0.00	0.00
12,400.00	90.33	90.039	6,448.84	992.99	5,722.73	5,722.05	0.00	0.00	0.00
12,500.00	90.33	90.039	6,448.25	992.92	5,822.73	5,822.05	0.00	0.00	0.00
12,600.00	90.33	90.039	6,447.67	992.85	5,922.73	5,922.05	0.00	0.00	0.00
12,700.00	90.33	90.039	6,447.08	992.78	6,022.73	6,022.05	0.00	0.00	0.00
12,800.00	90.33	90.039	6,446.50	992.71	6,122.72	6,122.05	0.00	0.00	0.00
12,900.00	90.33	90.039	6,445.91	992.65	6,222.72	6,222.05	0.00	0.00	0.00
13,000.00	90.33	90.039	6,445.33	992.58	6,322.72	6,322.04	0.00	0.00	0.00
13,100.00	90.33	90.039	6,444.75	992.51	6,422.72	6,422.04	0.00	0.00	0.00
13,200.00	90.33	90.039	6,444.16	992.44	6,522.72	6,522.04	0.00	0.00	0.00
13,300.00	90.33	90.039	6,443.58	992.37	6,622.72	6,622.04	0.00	0.00	0.00
13,400.00	90.33	90.039	6,442.99	992.30	6,722.71	6,722.04	0.00	0.00	0.00
13,500.00	90.33	90.039	6,442.41	992.24	6,822.71	6,822.04	0.00	0.00	0.00
13,600.00	90.33	90.039	6,441.82	992.17	6,922.71	6,922.03	0.00	0.00	0.00
13,700.00	90.33	90.039	6,441.24	992.10	7,022.71	7,022.03	0.00	0.00	0.00
13,800.00	90.33	90.039	6,440.65	992.03	7,122.71	7,122.03	0.00	0.00	0.00
13,900.00	90.33	90.039	6,440.07	991.96	7,222.71	7,222.03	0.00	0.00	0.00
14,000.00	90.33	90.039	6,439.48	991.89	7,322.70	7,322.03	0.00	0.00	0.00
14,100.00	90.33	90.039	6,438.90	991.83	7,422.70	7,422.03	0.00	0.00	0.00
14,200.00	90.33	90.039	6,438.32	991.76	7,522.70	7,522.02	0.00	0.00	0.00
14,253.90	90.33	90.039	6,438.00	991.72	7,576.60	7,575.92	0.00	0.00	0.00
TD at 14253.90									

<b>Database:</b>	Casper District	<b>Local Co-ordinate Reference:</b>	Well Will Trust 6-62-10-4846BN2
<b>Company:</b>	Bill Barrett Corp.	<b>TVD Reference:</b>	GL 4796' & KB 20' @ 4816.00ft
<b>Project:</b>	Weld County, CO NAD 83	<b>MD Reference:</b>	GL 4796' & KB 20' @ 4816.00ft
<b>Site:</b>	Will Trust 6-62-10_11 SWSW Pad	<b>North Reference:</b>	True
<b>Well:</b>	Will Trust 6-62-10-4846BN2	<b>Survey Calculation Method:</b>	Minimum Curvature
<b>Wellbore:</b>	OH		
<b>Design:</b>	Plan 1		

Design Targets									
Target Name	Dip Angle	Dip Dir.	TVD	+N/-S	+E/-W	Northing	Easting	Latitude	Longitude
- hit/miss target	(°)	(°)	(ft)	(ft)	(ft)	(usft)	(usft)		
- Shape									
6-62-10-4846BN2 PBHL	0.00	0.000	6,438.00	991.72	7,576.60	1,427,162.75	3,336,567.33	40° 29' 58.769 N	104° 17' 23.021 W
- plan hits target center									
- Point									
6-62-10-4846BN2 LP	0.00	0.000	6,481.00	996.75	221.65	1,427,069.66	3,329,212.98	40° 29' 58.830 N	104° 18' 58.230 W
- plan hits target center									
- Point									

Plan Annotations				
Measured Depth	Vertical Depth	Local Coordinates		Comment
(ft)	(ft)	+N/-S (ft)	+E/-W (ft)	
800.00	800.00	0.00	0.00	Start Build 2.00
1,658.11	1,645.33	123.47	-32.03	Start 2626.27 hold at 1658.11 MD
4,284.38	4,154.67	873.61	-226.58	Start Drop -2.00
5,142.49	5,000.00	997.08	-258.61	Start 1003.54 hold at 5142.49 MD
6,146.03	6,003.54	997.08	-258.61	Start DLS 12.00 TFO 90.04
6,898.82	6,481.00	996.75	221.65	Start 7355.08 hold at 6898.82 MD
14,253.90	6,438.00	991.72	7,576.60	TD at 14253.90