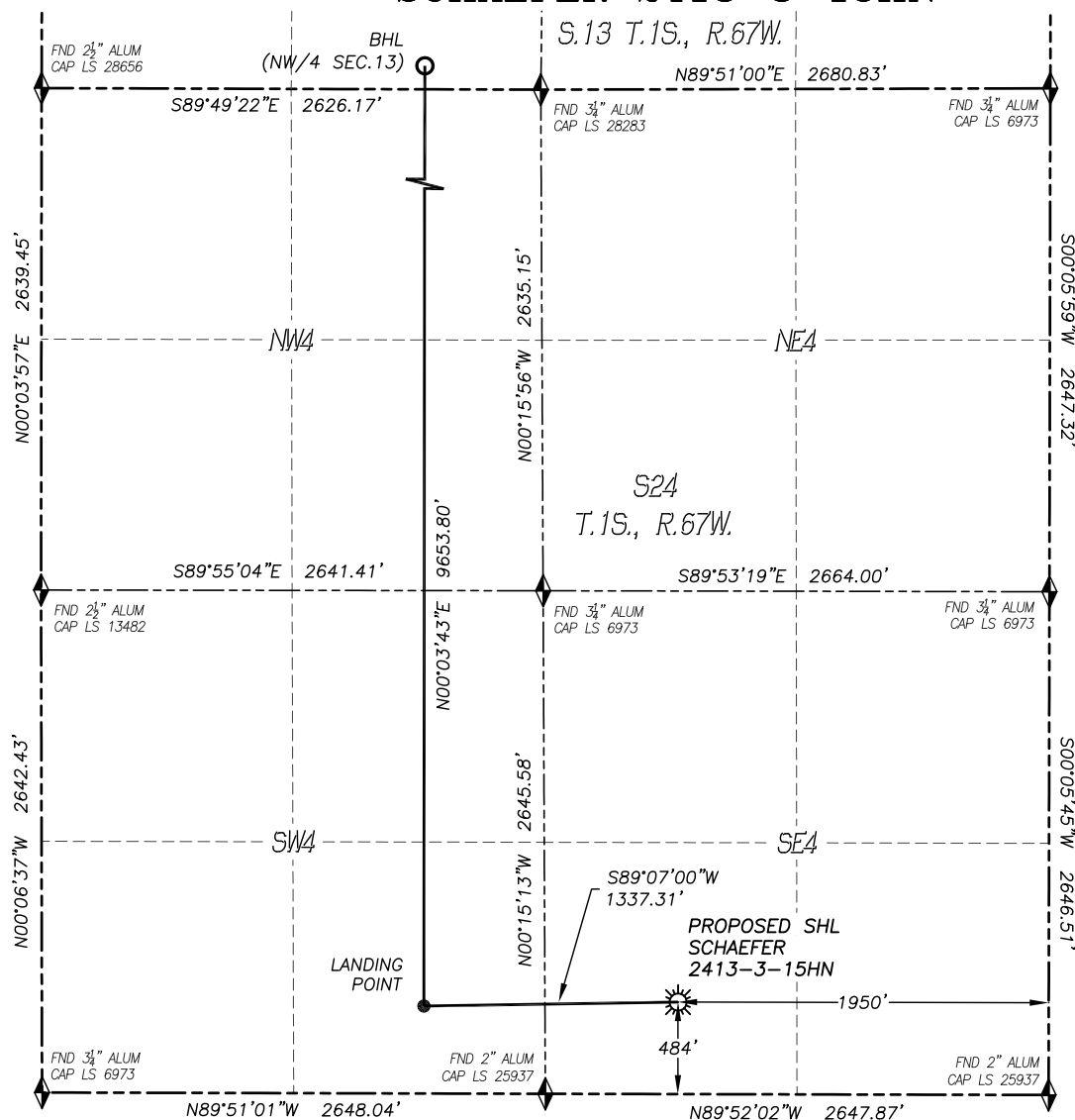


# WELL LOCATION CERTIFICATE

## SCHAEFER 2413-3-15HN

SECTION: 24  
TOWNSHIP: 1S  
RANGE: 67W



0 500 1000  
SCALE: 1" = 1000'

### LEGEND

- ◆ FOUND MONUMENT AS DESCRIBED
- ☼ PROPOSED WELL
- ⊙ EXISTING WELL
- BOTTOM HOLE
- ⊗ ABANDONED WELL
- ◆ CALCULATED POSITION

IN ACCORDANCE WITH A REQUEST FROM WARD PETROLEUM, DALEY LAND SURVEYING, INC. HAS DETERMINED THE SURFACE LOCATION OF THE SCHAEFER 2413-3-15HN WELL TO BE 484' FSL, 1950' FEL, AS MEASURED AT NINETY (90) DEGREES FROM THE SECTION LINES OF SECTION 24, TOWNSHIP 1 SOUTH, RANGE 67 WEST, AND THE BOTTOM HOLE LOCATION TO BE 460' FNL, 2010' FWL, AS MEASURED AT NINETY (90) DEGREES FROM THE SECTION LINES OF SECTION 13, TOWNSHIP 1 SOUTH, RANGE 67 WEST OF THE 6TH PRINCIPAL MERIDIAN, ADAMS COUNTY, COLORADO.

I HEREBY CERTIFY THAT THIS WELL LOCATION CERTIFICATE WAS PREPARED BY ME OR UNDER MY DIRECT SUPERVISION, THAT THE WORK WAS COMPLETED ON 10/5/2015 FOR AND ON BEHALF OF WARD PETROLEUM, AND THAT THIS MAP DOES NOT REPRESENT A BOUNDARY SURVEY, IT IS NOT A LAND SURVEY PLAT OR AN IMPROVEMENT SURVEY PLAT AND IT IS NOT TO BE RELIED UPON FOR THE ESTABLISHMENT OF FENCE, BUILDING OR OTHER FUTURE IMPROVEMENT LINES.

### NOTES:

- BEARINGS FOR THIS MAP ARE ASSUMED AND BASED UPON GPS OBSERVATIONS MADE BETWEEN MONUMENTS LOCATED AT THE SOUTHWEST CORNER AND SOUTH QUARTER CORNER OF SECTION 24, T.1S., R.67W.
- HORIZONTAL DATUM IS NAD83.
- VERTICAL DATUM IS NAVD88 AND ORIGINATES FROM THE LOCAL C.O.R.S. NETWORK, UTILIZING THE GEOID12A MODEL.
- SEE LOCATION DRAWING FOR VISIBLE IMPROVEMENTS WITHIN 500' OF PROPOSED DISTURBED AREA.
- SURFACE USE: AGRICULTURAL.
- INST. OPERATOR: SCOTT ESTABROOKS

### NEAREST CULTURAL ITEMS:

BUILDING: 513'± SE  
 BUILDING UNIT: 648'± SW  
 HIGH OCC. BLD. UNIT: 5280'±  
 DES. OUTSIDE ACTIVITY AREA: 5280'±  
 PUBLIC ROAD: 465'± S  
 ABOVE GROUND UTILITY: 500'± S  
 RAILROAD: 1014'± NW  
 PROPERTY LINE: 484'± S

### NAD 83 LATITUDE AND LONGITUDE

#### SURFACE LOCATION:

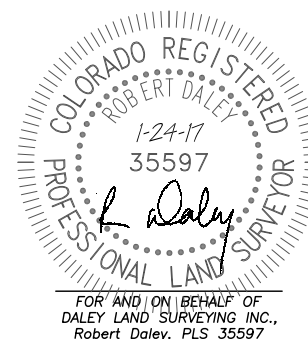
LATITUDE: N39.94465°  
 LONGITUDE: W104.83479°  
 ELEVATION: 5022'  
 PDOP: 1.5  
 QTR/QTR: SW4/SE4

#### LANDING POINT:

LATITUDE: N39.94459°  
 LONGITUDE: W104.83956°  
 FOOTAGE: 460' FSL, 2010' FWL  
 SEC. 24, T1S, R67W

#### BOTTOM HOLE:

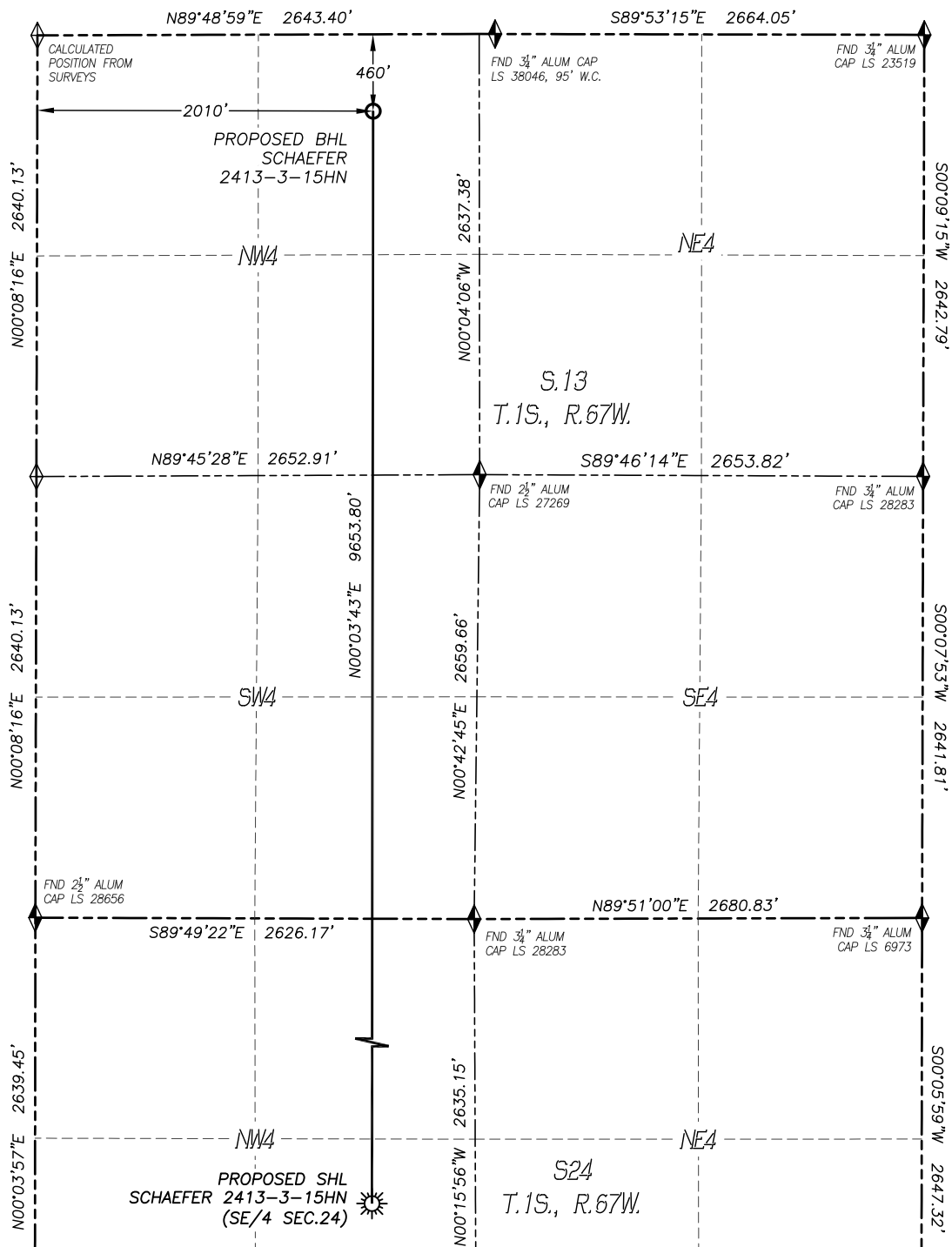
LATITUDE: N39.97109°  
 LONGITUDE: W104.83952°



# WELL LOCATION CERTIFICATE

## SCHAEFER 2413-3-15HN

SECTION: 24  
TOWNSHIP: 1S  
RANGE: 67W



### LEGEND

- FOUND MONUMENT AS DESCRIBED
- PROPOSED WELL
- EXISTING WELL
- BOTTOM HOLE
- ABANDONED WELL
- CALCULATED POSITION

0 1000'  
SCALE: 1" = 1000'