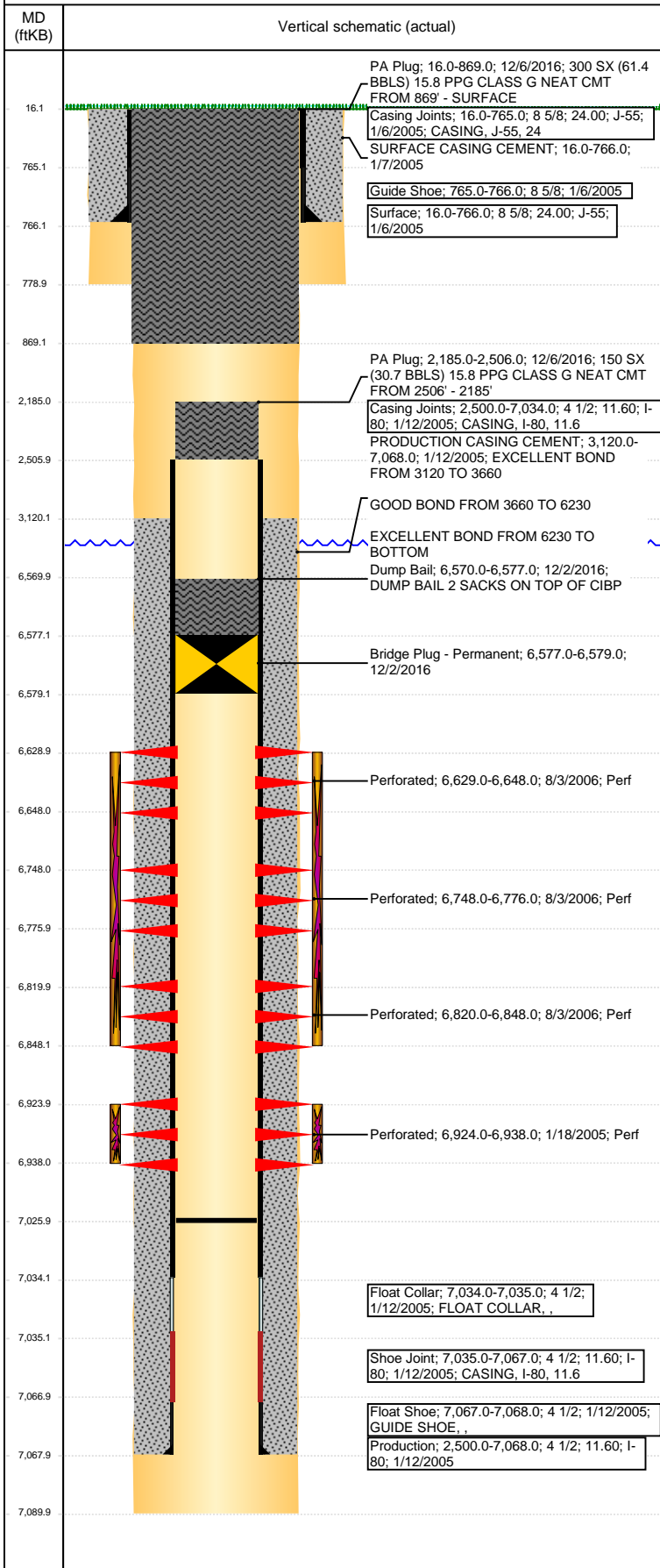


Well Name: RHINIE 15-29

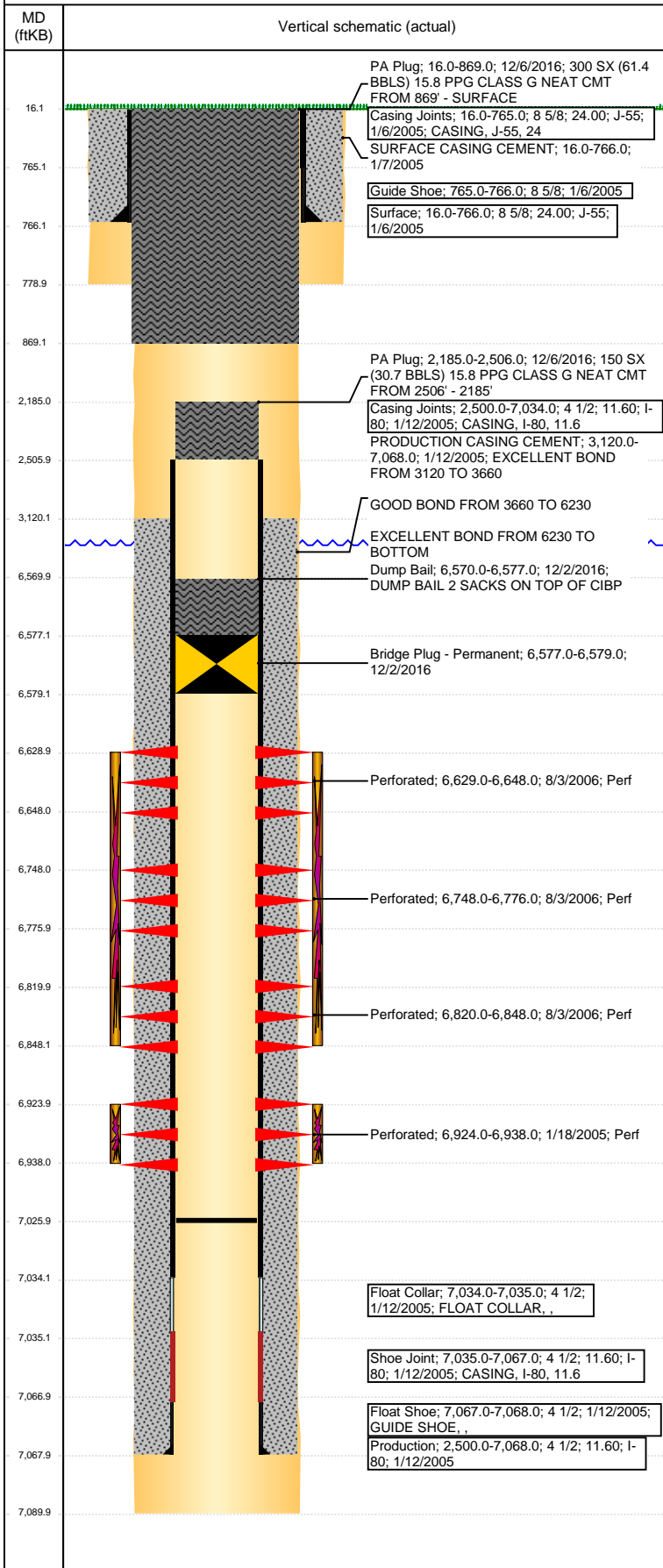
VERTICAL - ORIGINAL HOLE, 1/24/2017 2:01:12 PM



Well Header							
API	05-123-22606	Business Unit	DJ BASIN	District	15	Well Config	VERTICAL
Original KB Elevation (ft)	4,676	KB - GL / MSL (ftKB)	16.00	Spud Date	1/6/2005	P & A Date	12/2/2016
Comment							
NO RECENT C/O OR TAG FILL INFO AVAILABLE							
Directions To Well							
Congressional Location							
Quarter 3	Quarter 4	Section	Township	TwNShp N/S Dir	Range	Range E/W Dir	
SW	SE	29	6	N	64	W	
Bottom Hole Location							
North-South Distance (ft)		From N or S Line		East-West Distance (ft)		From E or W Line	
Plug Back Total Depths							
Date	Depth (ftKB)	Method		Com			
1/12/2005	7,034.0	CASING TALLY		TOP OF FLOAT COLLAR			
1/18/2005	7,026.0	CASED HOLE LOG		CBL DEPTH LOGGER			
Wellbore Sections							
Section Des		Size (in)	Act Top, MD (ftKB)		Act Btm, MD (ftKB)		
SURFACE		12 1/4	16		779		
PRODUCTION		7 7/8	779		7,090		
Zone Statuses							
Zone Name	Status Date	Status	Fluid Type	Job	Prod Method		
CODELL	2/8/2005	PR		DRILLING/CO...			
CODELL	12/2/2016	P&A		ABANDON WE...			
NIOBRARA	8/7/2006	PR		RECOMPLETI...			
NIOBRARA	12/2/2016	P&A		ABANDON WE...			
NIOBRARA-C...	12/2/2016	P&A		ABANDON WE...			
Casing Strings							
Surface, 766.0ftKB							
Casing Description	Run Date	OD (in)	W/Len (L...)	Grade	Top, MD (ft...)	MD (ftKB)	
Surface	1/6/2005	8 5/8	24.00	J-55	16.0	766.0	
Production, 7,068.0ftKB							
Casing Description	Run Date	OD (in)	W/Len (L...)	Grade	Top, MD (ft...)	MD (ftKB)	
Production	1/12/2005	4 1/2	11.60	I-80	16.0	7,068.0	
Cement							
Description				Top Depth (ftKB)	Bottom Depth (ftKB)		
SURFACE CASING CEMENT				16.0	766.0		
Description				Top Depth (ftKB)	Bottom Depth (ftKB)		
PRODUCTION CASING CEMENT				3,120.0	7,068.0		
Description				Top Depth (ftKB)	Bottom Depth (ftKB)		
Dump Bail				6,570.0	6,577.0		
Description				Top Depth (ftKB)	Bottom Depth (ftKB)		
PA Plug				2,185.0	2,506.0		
Description				Top Depth (ftKB)	Bottom Depth (ftKB)		
PA Plug				16.0	869.0		
Tubing Strings							
Tubing Description	Run Date	String...	ID (in)	Wt (lb/ft)	Grade	Len (ft)	Set De...
Tubing - Production	9/5/2006	2 3/8	2.00	4.70	J-55	6,594.65	
Other In Hole							
Run Date	Des		OD (in)	Top (ftKB)	Btm (ftKB)		
12/2/2016	Bridge Plug - Permanent		3.99	6,577.0	6,579.0		
Logs							
Date	Type			Top, MD (ftKB)	Btm, MD (ftKB)		
1/12/2005	CEMENT VOLUME			763.0	7,076.0		
1/12/2005	COMPENSATED NEUTRON			3,550.0	7,066.0		
1/12/2005	INDUCTION			763.0	7,076.0		
1/12/2005	MICRO LOG			763.0	7,066.0		
1/18/2005	CBL/CCL/GR			3,012.0	7,022.0		
11/30/2016	GYRO			0.0	6,850.0		
Perforation Data							
Linked Zone	Bnch/St g	Sum of Entered Shot Total	Top (ftKB)	Btm (ftKB)	Date		
NIOBRARA, ORIGINAL HOLE	A	122	6,629.00	6,648.00	8/3/2006		
NIOBRARA, ORIGINAL HOLE	B	122	6,748.00	6,776.00	8/3/2006		
NIOBRARA, ORIGINAL HOLE	C	122	6,820.00	6,848.00	8/3/2006		

Well Name: RHINIE 15-29

VERTICAL - ORIGINAL HOLE, 1/24/2017 2:01:15 PM



Perforation Data					
Linked Zone	Bnch/St g	Sum of Entered Shot Total	Top (ftKB)	Btm (ftKB)	Date
CODELL, ORIGINAL HOLE		56	6,924.00	6,938.00	1/18/2005
Total (Sum)		422			
Stimulation Intervals					
Start Date 1/20/2005		Primary Job Type DRILLING/COMPLETION - ORIGINAL			
Technical Result		Tech Result Details		Tech Result Note	
Comment					
Start Date 8/4/2006		Primary Job Type RECOMPLETION			
Technical Result		Tech Result Details		Tech Result Note	
Comment					